

CPC CABLE CLAMP KIT,STD,SZ 17 ✓ ACTIVE

AMP | AMP CPC

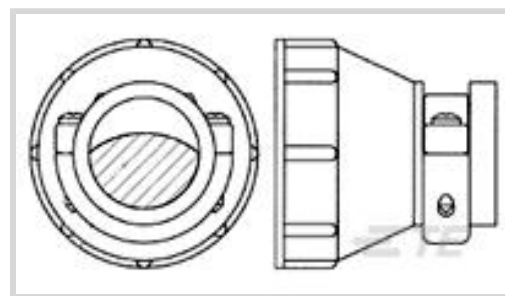
TE Part # 213904-1

TE Internal #: 213904-1

[View on TE.com >](#)



Connectors > Circular Connectors > Circular Connector Accessories > Unscreened Circular Connector Backshells & Clamps



Accessory Type: **Cable Clamp**

Shell Size: **17**

Body Style: **Straight**

Accepts Cable Diameter (Max): **11.51 mm [.453 in]**

Cover: **Without**

Features

Product Type Features

Product Type	Accessory
Accessory Type	Cable Clamp
Shell Size	17

Configuration Features

Cover	Without
-------	---------

Body Features

Cable Clamp Material	Nylon
Cable Clamp Flammability Rating	UL 94V-1
Cable Clamp Color	Black
Body Style	Straight

Mechanical Attachment

Screw & Hole Thread Size	15/16-20
--------------------------	----------

Dimensions

Accepts Cable Diameter (Max)	11.51 mm[.453 in]
------------------------------	-------------------

Packaging Features

Packaging Quantity	100
Packaging Method	Individual

Product Compliance

[For compliance documentation, visit the product page on TE.com>](#)

EU RoHS Directive 2011/65/EU	Compliant
EU ELV Directive 2000/53/EC	Compliant
China RoHS 2 Directive MIIT Order No 32, 2016	No Restricted Materials Above Threshold
EU REACH Regulation (EC) No. 1907/2006	Current ECHA Candidate List: JAN 2019 (197) Candidate List Declared Against: DEC 2014 (161)
Halogen Content	Not Low Halogen - contains Br or Cl > 900 ppm.
Solder Process Capability	Not applicable for solder process capability

Product Compliance Disclaimer

This information is provided based on reasonable inquiry of our suppliers and represents our current actual knowledge based on the information they provided. This information is subject to change. The part numbers that TE has identified as EU RoHS compliant have a maximum concentration of 0.1% by weight in homogenous materials for lead, hexavalent chromium, mercury, PBB, PBDE, DBP, BBP, DEHP, DIBP, and 0.01% for cadmium, or qualify for an exemption to these limits as defined in the Annexes of Directive 2011/65/EU (RoHS2). Finished electrical and electronic equipment products will be CE marked as required by Directive 2011/65/EU. Components may not be CE marked. Additionally, the part numbers that TE has identified as EU ELV compliant have a maximum concentration of 0.1% by weight in homogenous materials for lead, hexavalent chromium, and mercury, and 0.01% for cadmium, or qualify for an exemption to these limits as defined in the Annexes of Directive 2000/53/EC (ELV). Regarding the REACH Regulations, TE's information on SVHC in articles for this part number is still based on the European Chemical Agency (ECHA) 'Guidance on requirements for substances in articles' (Version: 2, April 2011), applying the 0.1% weight on weight concentration threshold at the finished product level. TE is aware of the European Court of Justice ruling of September 10th, 2015 also known as O5A (Once An Article Always An Article) stating that, in case of 'complex object', the threshold for a SVHC must be applied to both the product as a whole and simultaneously to each of the articles forming part of its composition. TE has evaluated this ruling based on the new ECHA "Guidance on requirements for substances in articles" (June 2017, version 4.0) and will be updating its statements accordingly.

Also in the Series | **AMP CPC**



Circular Connector Adapters(7)



Circular Connector Boots & Strain Relief(7)



Circular Connector Caps & Covers(16)



Circular Connector Hardware(3)



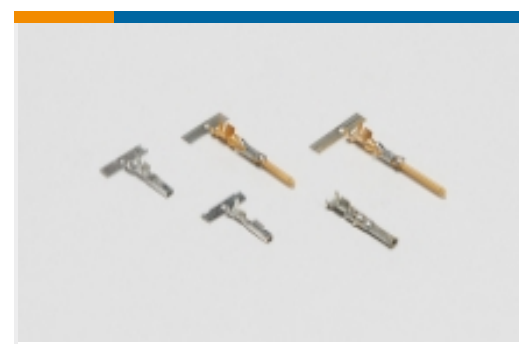
Circular Connector Keying
Plugs(2)



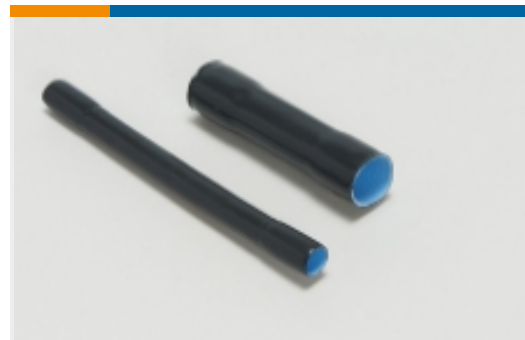
Circular Connector Seals
(35)



Circular Power Connectors
(513)



Power Contacts(5)

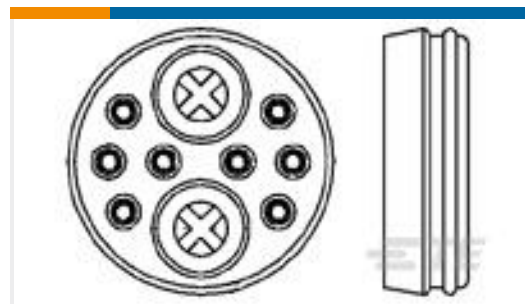


Sealing & Repair Sleeves(2)

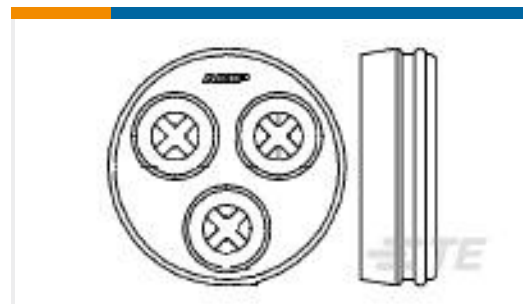


Unscreened Circular
Connector Backshells &
Clamps(57)

Customers Also Bought



TE Part #213900-1
CPC SEAL ASSY KIT,SRS
6,17-10



TE Part #213899-1
CPC SEAL ASSY KIT,SRS
5,17-3

Documents

Product Drawings

[CPC CABLE CLAMP KIT,STD,SZ 17](#)

English

CAD Files

Customer View Model

[ENG_CVM_213904-1_A.2d_dxf.zip](#)

English

Customer View Model

[ENG_CVM_213904-1_A.3d_igs.zip](#)

English

Customer View Model

[ENG_CVM_213904-1_A.3d_stp.zip](#)

English

3D PDF

English



[Product Environmental Compliance](#)

[TE Material Declaration](#)

English