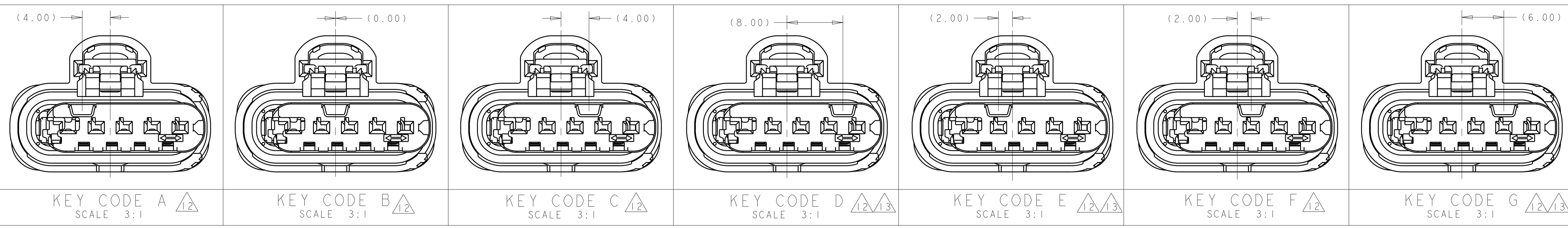
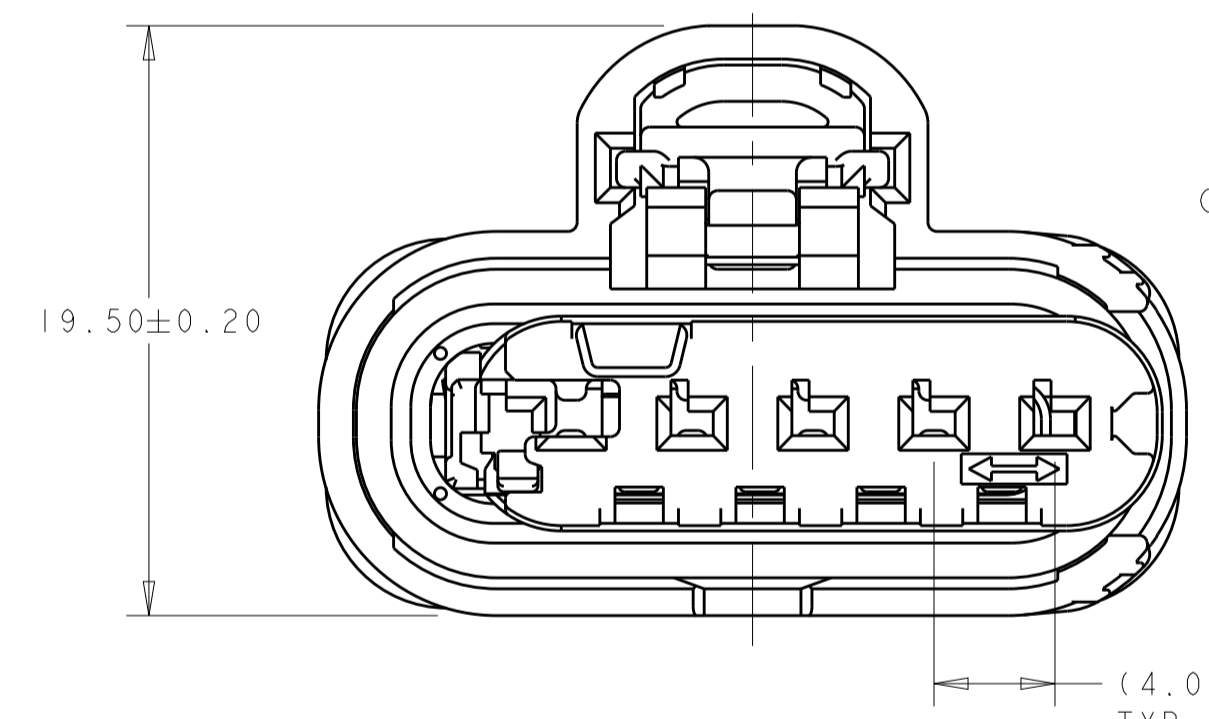
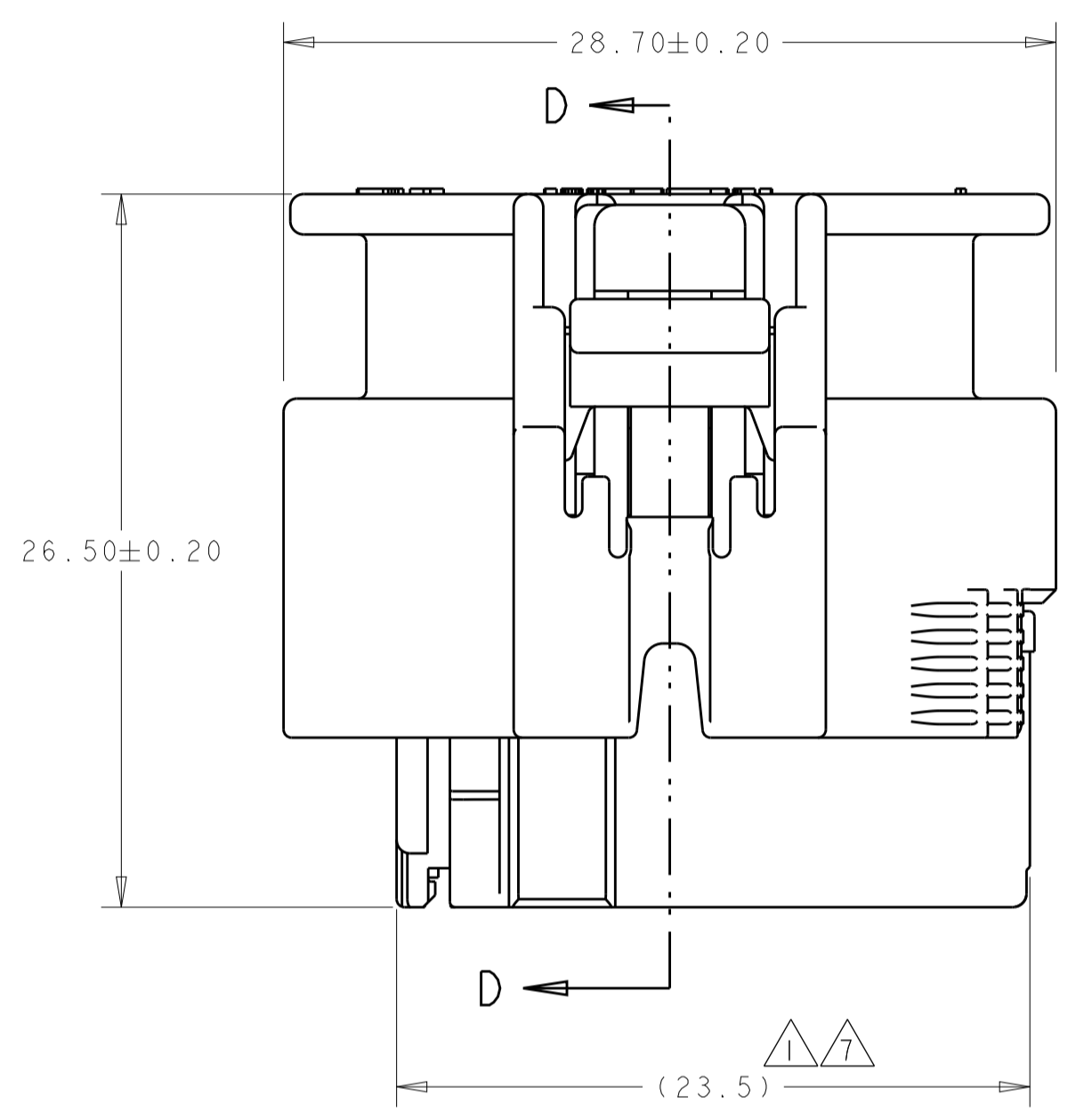


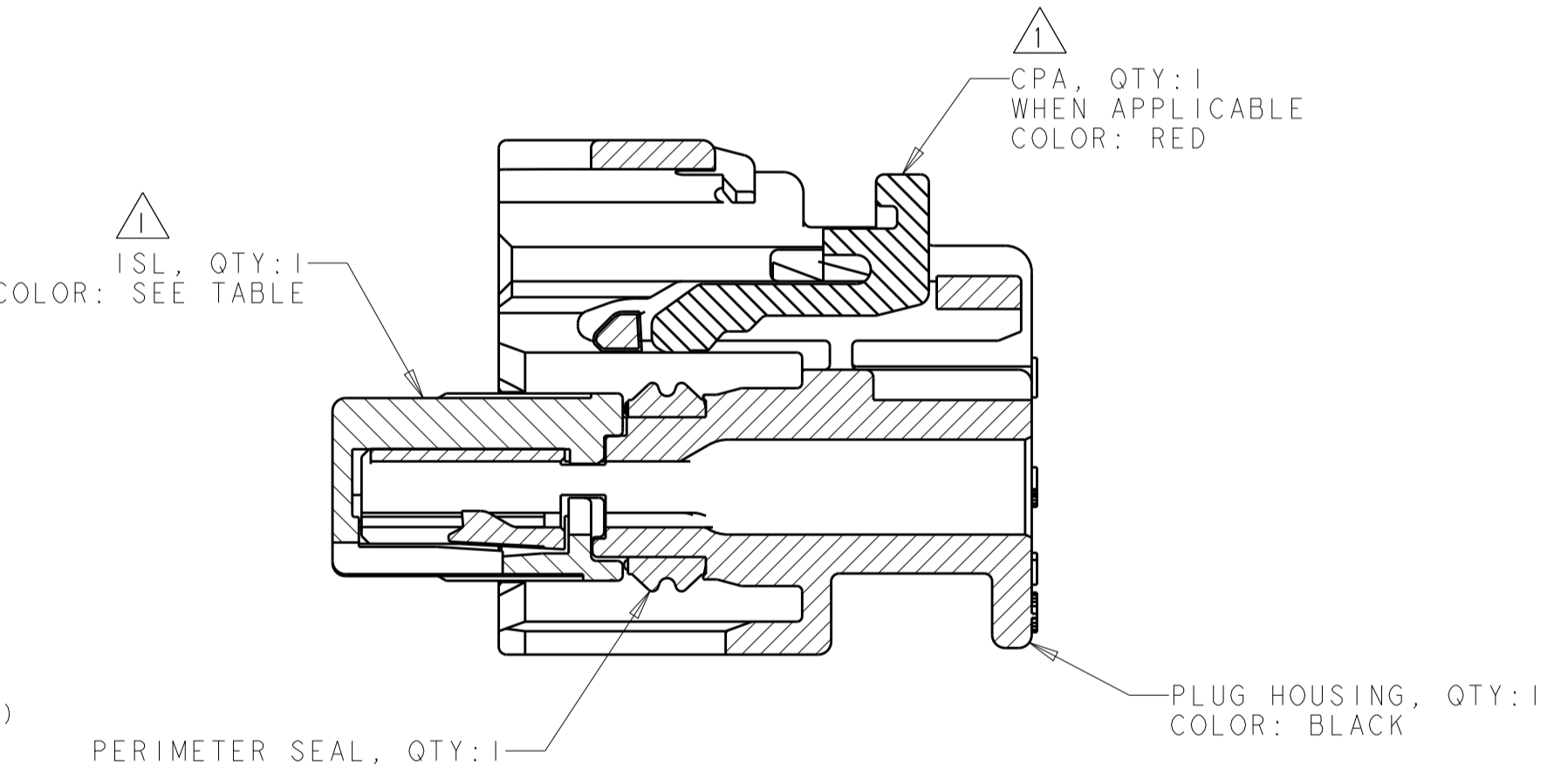
REVISIONS				
P. LTR.	DESCRIPTION	DATE	OWN	APVD
I	INITIAL RELEASE	11FEB2016	MDB	MDB
A	RELEASED PER ECO-16-012664	01NOV2016	DLD	JLT



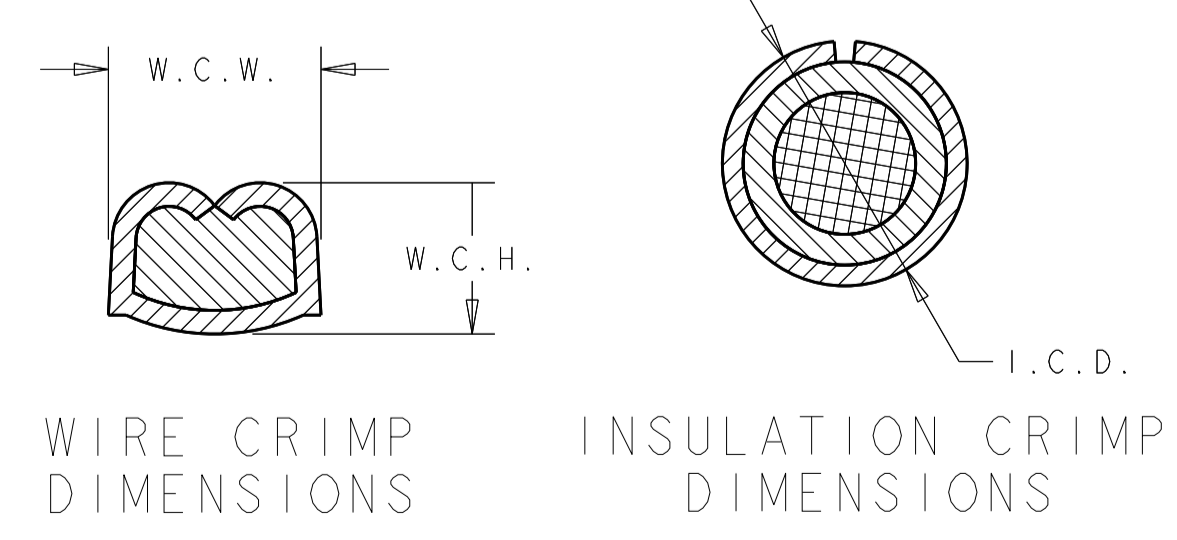
KEY CODE A SCALE 3:1
 KEY CODE B SCALE 3:1
 KEY CODE C SCALE 3:1
 KEY CODE D SCALE 3:1
 KEY CODE E SCALE 3:1
 KEY CODE F SCALE 3:1
 KEY CODE G SCALE 3:1



ISL SHOWN IN PRE-LATCHED (AS-SHIPED) POSITION

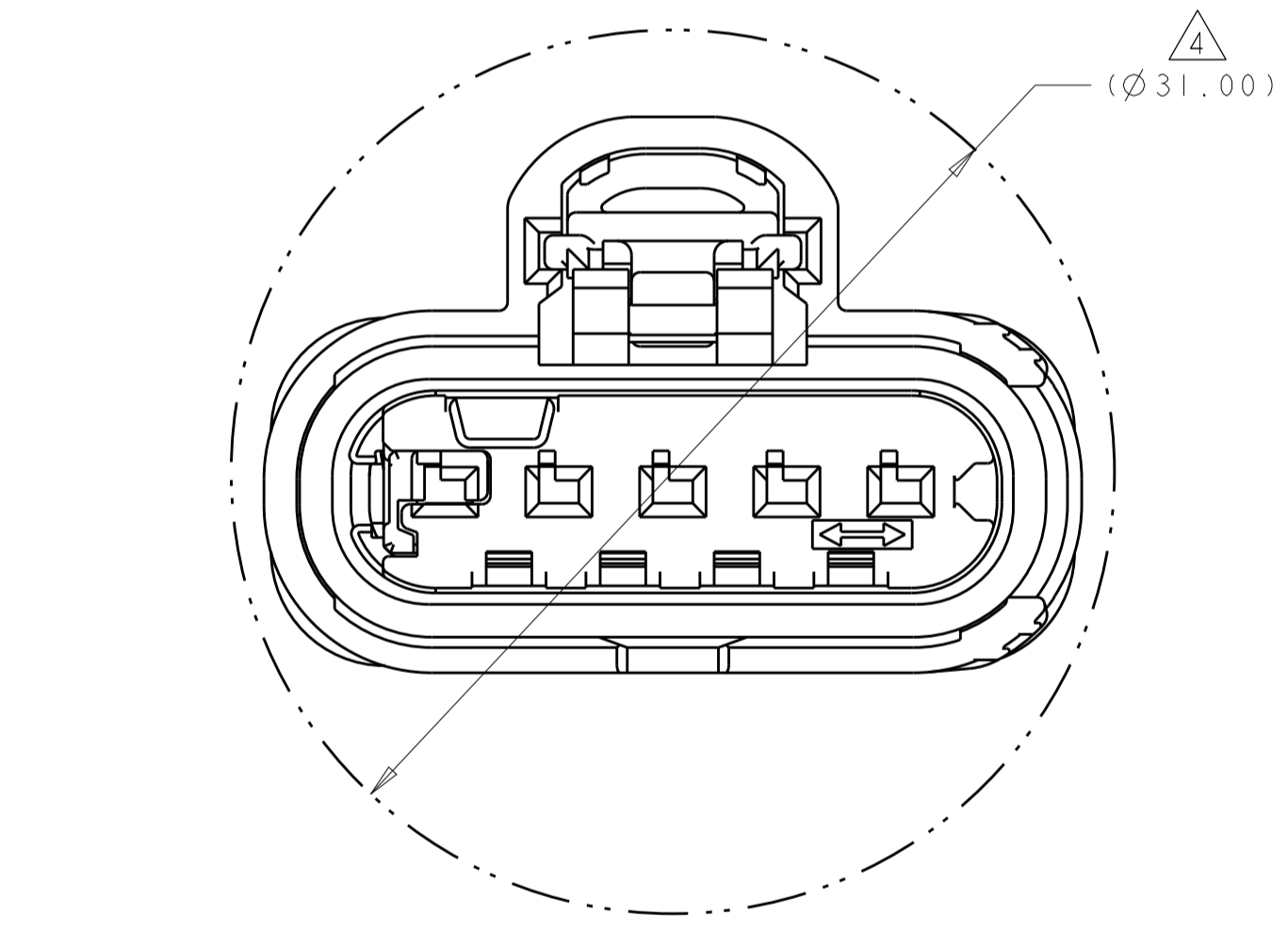


SECTION D-D SHOWN WITH CPA IN PRE-LATCHED POSITION SCALE 4:1

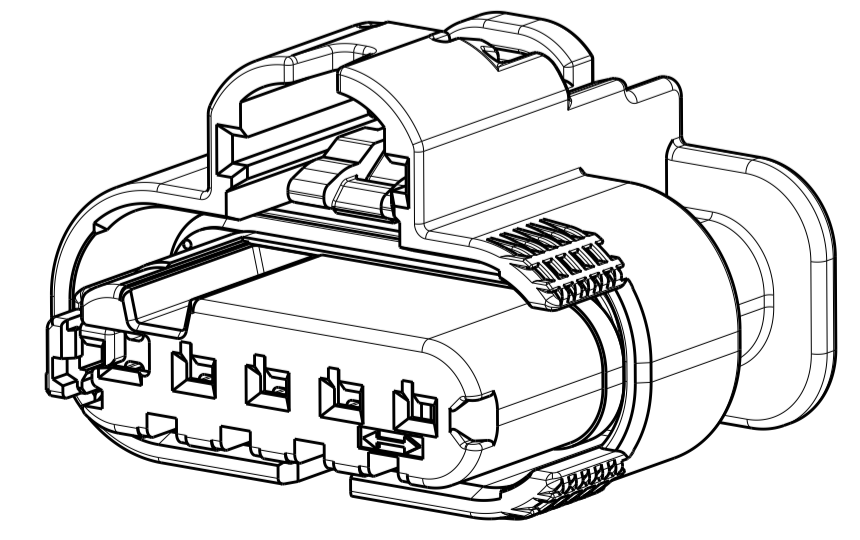


WIRE CRIMP DIMENSIONS INSULATION CRIMP DIMENSIONS

- 1 ISL AND CPA (WHEN APPLICABLE) ARE SHIPPED IN THEIR PRE-LATCHED POSITIONS.
- 2. TERMINALS SOLD SEPARATELY. FOR USE WITH TE MCON 1.2mm CLEAN BODY CONTACT AND WIRE SEAL, SEE TABLE.
- 3. APPLICABLE INTERFACE DRAWINGS: EWCAP 120-S-005-1-Z02 AND 120-S-005-1-Z03
- 4 MINIMUM FEED-THROUGH CONDITION WITH 1.0mm CLEARANCE ALL AROUND.
- 5. TRACEABILITY CODE YY = TWO DIGIT YEAR, JJJ = 3 DIGIT JULIAN DAY, S = 1 DIGIT SHIFT.
- 6. FOR OPTIONAL TERMINAL CAVITY BLOCKING, CONTACT TE SALES REPRESENTATIVE OR CUSTOMER SERVICE.
- 7 SEE INSTRUCTION SHEET 408-32103 FOR CONNECTOR SERVICE AND ISL OPERATION, ISL ACTUATION DISTANCE IS 2.0mm.
- 8 CONTACT PLATING AND APPLICABLE INDIVIDUAL WIRE SEAL ARE APPLICATION DEPENDENT, CONTACT TE SALES REPRESENTATIVE OR CUSTOMER SERVICE FOR DETAILS.
- 9 FOR WIRE CRIMP DETAILS, SEE TE APPLICATION SPECIFICATION 114-18464
- 10 DOCUMENTED I.C.D. IS SPECIFIED TO MEET MOST WIRE SEAL APPLICATIONS. HOWEVER, I.C.D. IS HIGHLY DEPENDENT ON INSULATION TYPE AND O.D. SUFFICIENT GRIP OF THE WIRE SEAL MUST BE OBTAINED SUCH THAT WIRE SEAL DOES NOT DISPLACE FROM INSULATION GRIP DURING CONTACT INSERTION INTO CONNECTOR HOUSING. THE WIRE SEAL SHALL NOT BE CRIMPED TOO TIGHTLY THAT THE WIRE SEAL TEARS DURING THE CRIMPING OPERATION.
- 11. QUALIFICATION PENDING TO USCAR -2, REV 6 - T4,V4,S3 ENVIRONMENT.
- 12 KEY CODE DIMENSIONS ARE SHOWN WITH ISL IN PRE-LATCHED POSITION. FOR DIMENSION OF KEY WITH ISL IN FINAL POSITION, ADJUST SHOWN DIMENSIONS BY 2.0mm.
- 13 KEY CODE NOT TOOLED.
- 14 PRELIMINARY - NOT RELEASED FOR PRODUCTION.



ISL SHOWN IN FINAL (LOCKED) POSITION - REF ONLY SCALE 4:1



ISOMETRIC VIEW SCALE 3:1

ISL COLOR	KEYING CONFIGURATION	PART NUMBER
BLUE	G	1-2203775-7
DARK GRAY	F	1-2203775-6
LIGHT GRAY	E	1-2203775-5
BLUE	D	1-2203775-4
DARK GRAY	C	1-2203775-3
LIGHT GRAY	B	1-2203775-2
BLUE	A	1-2203775-1
CPA (YES / NO)	ISL COLOR	KEYING CONFIGURATION

150°C	1418844	1670146	1418850	W.C.H	W.C.W	I.C.D	WIRE SEAL PART NUMBER
8	9	9	10	8			

THIS DRAWING IS A CONTROLLED DOCUMENT.

OWN: M. HARISH 12MAY2011
 CHK: B. BUCHTER 12MAY2011
 APVD: B. BUCHTER 12MAY2011

TE Connectivity

PLUG ASSEMBLY, SEALED, 5 POSITION, MCON

SIZE: A1 00779 C=2203775

SCALE: 4:1 SHEET: 1 OF 1 REV: A