

2141900-2 ✓ ACTIVE



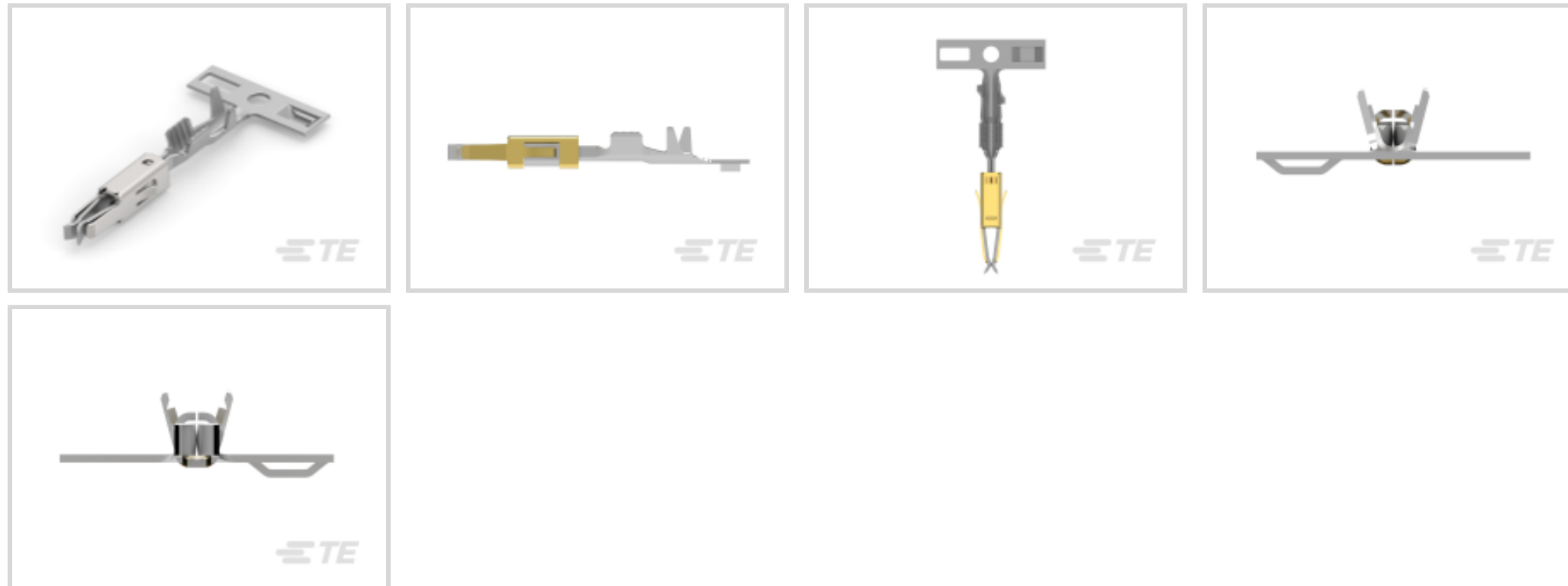
Micro Timer II

TE Internal #: 2141900-2

Automotive Terminals, Receptacle, Mating Tab Width 1.6 mm [.063 in], Tab Thickness .024 in [.6 mm], 24 – 20 AWG Wire Size, Micro Timer II

[View on TE.com >](#)

Terminals & Splices > Automotive Terminals > TIMER, RECEPTACLE AND TAB



Terminal Type: **Receptacle**

Mating Tab Width: **1.6 mm [.063 in]**

Mating Tab Thickness: **.6 mm [.024 in]**

Terminal Transmits: **0 – 24 A (Low Power)**

Wire Size: **24 – 20 AWG**

[All TIMER, RECEPTACLE AND TAB \(346\)](#)

Features

Product Type Features

Sealable	No
Primary Locking Feature	Locking Lance

Contact Features

Contact Size	1.6mm
Contact Fabrication	Stamped & Formed
Crimp Type	F-Crimp
Terminal Type	Receptacle
Mating Tab Width	1.6 mm[.063 in]
Mating Tab Thickness	.6 mm[.024 in]
Interface Plating	Tin (Sn)

Termination Features

Termination Method to Wire & Cable	Crimp
------------------------------------	-------



Product Terminates To

Wire

Dimensions

Wire Size

.2 – .5 mm²

Wire Size Search

20 AWG, 21 AWG, 22 AWG, 23 AWG, 24 AWG

Usage Conditions

Insulation Option

Uninsulated

Operating Temperature (Max)

80 °C, 85 °C, 90 °C, 100 °C, 105 °C, 110 °C, 120 °C [176 °F] [185 °F] [194 °F] [212 °F] [221 °F] [230 °F] [248 °F]

Operating Temperature Range

-40 – 120 °C [-40 – 248 °F]

Operation/Application

Compatible With Wire Base Material

Copper

Packaging Features

Packaging Method

Reel

Packaging Quantity

7000

Other

Terminal Transmits

0 – 24 A (Low Power)

Product Compliance

For compliance documentation, visit the product page on [TE.com](https://www.te.com)>

EU RoHS Directive 2011/65/EU

Compliant

EU ELV Directive 2000/53/EC

Compliant

China RoHS 2 Directive MIIT Order No 32, 2016

No Restricted Materials Above Threshold

EU REACH Regulation (EC) No. 1907/2006

Current ECHA Candidate List: JUNE 2022 (224)
 Candidate List Declared Against: JAN 2022 (223)
 SVHC > Threshold:
 Not Yet Reviewed

Halogen Content

Low Halogen - Br, Cl, F, I < 900 ppm per homogenous material. Also BFR/CFR/PVC Free

Solder Process Capability

Not reviewed for solder process capability

Product Compliance Disclaimer



This information is provided based on reasonable inquiry of our suppliers and represents our current actual knowledge based on the information they provided. This information is subject to change. The part numbers that TE has identified as EU RoHS compliant have a maximum concentration of 0.1% by weight in homogenous materials for lead, hexavalent chromium, mercury, PBB, PBDE, DBP, BBP, DEHP, DIBP, and 0.01% for cadmium, or qualify for an exemption to these limits as defined in the Annexes of Directive 2011/65/EU (RoHS2). Finished electrical and electronic equipment products will be CE marked as required by Directive 2011/65/EU. Components may not be CE marked. Additionally, the part numbers that TE has identified as EU ELV compliant have a maximum concentration of 0.1% by weight in homogenous materials for lead, hexavalent chromium, and mercury, and 0.01% for cadmium, or qualify for an exemption to these limits as defined in the Annexes of Directive 2000/53/EC (ELV). Regarding the REACH Regulation, the information TE provides on SVHC in articles for this part number is based on the latest European Chemicals Agency (ECHA) 'Guidance on requirements for substances in articles' posted at this URL: <https://echa.europa.eu/guidance-documents/guidance-on-reach>

Compatible Parts



TE Part # 493487-1
HSG 8 POSN. MICROTIMER REC.



TE Part # 2305570-1
TERMINAL CUTTER, SIDE FEED



TE Part # 2-2151050-1
OCEAN_2.0_APPLICATOR-S-062F0900



TE Part # 2-2151050-2
OCEAN_2.0_APPLICATOR-S-062F0900



TE Part # 2151050-1
OCEAN_2.0_APPLICATOR-S-062F0900



TE Part # 2151050-2
OCEAN_2.0_APPLICATOR-S-062F0900



TE Part # 5-2151050-1
OCEAN_2.0_APPLICATOR-S-062F0900



TE Part # 5-2151050-2
OCEAN_2.0_APPLICATOR-S-062F0900



TE Part # 7-2151050-1
OCEAN_2.0_APPLICATOR-S-062F0900



TE Part # 7-2151050-2
OCEAN_2.0_APPLICATOR-S-062F0900



KIT
REPRESENTATION ONLY

TE Part # 7-2151050-7
OCEAN_2.0_SPARE_PART_KIT-062F0900

Also in the Series | **Micro Timer II**



Automotive Connector Caps & Covers (2)



Automotive Connector Locks & Position Assurance(1)



Automotive Housings(29)



Automotive Seals & Cavity Plugs(1)



Automotive Terminals(30)



Insertion & Extraction Tools(4)

Customers Also Bought



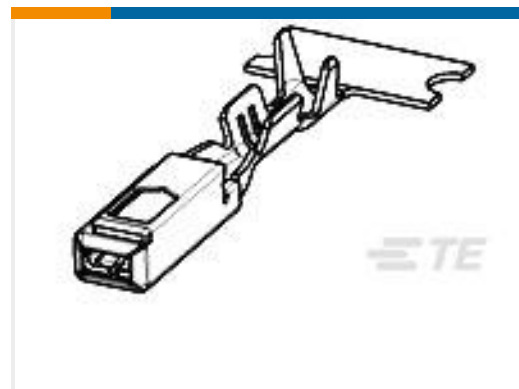
TE Part #1241406-3
AMP MCP, RECEPTACLE AND TAB



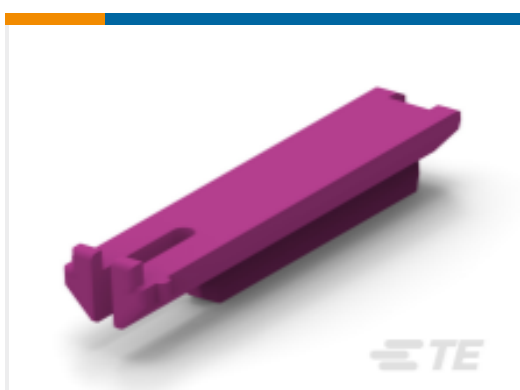
TE Part #7-1452665-2
MCON, RECEPTACLE AND TAB



TE Part #2-2141874-1
TIMER, RECEPTACLE AND TAB



TE Part #5-1534116-1
MQS0,63 Sn rec CB unseal. 0,35-0,5 2P



TE Part #1-1355034-1
JPT KONTSICHERUNG8P

Documents

Product Drawings

[MT2 A REC 1.6 Contact SRC Sn](#)

English

CAD Files

[3D PDF](#)

[3D](#)

[Customer View Model](#)

[ENG_CVM_CVM_2141900-2_A.2d_dxf.zip](#)



English

Customer View Model

[ENG_CVM_CVM_2141900-2_A.3d_igs.zip](#)

English

Customer View Model

[ENG_CVM_CVM_2141900-2_A.3d_stp.zip](#)

English

By downloading the CAD file I accept and agree to the [Terms and Conditions](#) of use.

Datasheets & Catalog Pages

[Timer Interconnection System](#)

English

Product Specifications

[Application Specification](#)

German

[Application Specification](#)

English

Product Environmental Compliance

[Product Compliance](#)

English

[Product Compliance](#)

English