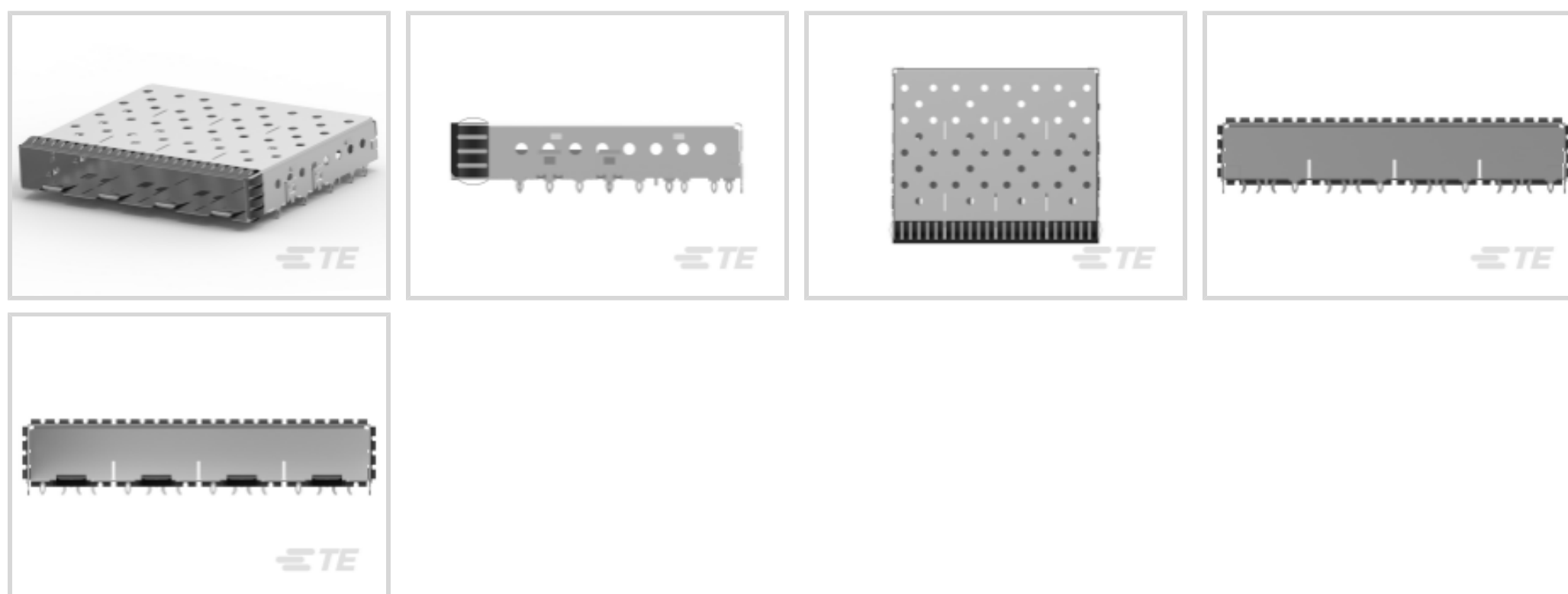




TE Internal #: 2007178-1
 SFP, SFP+ & zSFP+, Cage Assembly, Data Rate (Max) 16 Gb/s,
 External Springs, SFP+, Included Lightpipe, 1 x 4, Dual Round,
 Standard, Standard

[View on TE.com >](#)

Connectors > Pluggable IO Connectors & Cages > SFP, SFP+ & zSFP+



Pluggable I/O Product Type: **Cage Assembly**
 Data Rate (Max): **16 Gb/s**
 EMI Containment Feature Type: **External Springs**
 Pluggable I/O Applications: **SFP+**
 Included Lightpipe: **Yes**

Features

Product Type Features

| | |
|-----------------------------------|-----------------------|
| Form Factor | SFP+ |
| Cage Type | Ganged |
| Pluggable I/O Product Type | Cage Assembly |
| Integrated Lightpipes | No |
| Connector System | Cable-to-Board |
| Sealable | Yes |
| Connector & Contact Terminates To | Printed Circuit Board |

Configuration Features

| | |
|---------------------------|------------|
| Port Matrix Configuration | 1 x 4 |
| Lightpipe Configuration | Dual Round |
| Lightpipe Style | Standard |
| Lightpipe Profile | Standard |
| Number of Ports | 4 |

Electrical Characteristics

| | |
|--|--|
| | |
|--|--|



| | |
|-----------------|---------|
| Data Rate (Max) | 16 Gb/s |
|-----------------|---------|

Termination Features

| | |
|---|--------------------------|
| Termination Method to Printed Circuit Board | Through Hole - Press-Fit |
|---|--------------------------|

Mechanical Attachment

| | |
|--------------------|--------------------------|
| PCB Mounting Style | Through Hole - Press-Fit |
|--------------------|--------------------------|

| | |
|-------------------------|-------------|
| Connector Mounting Type | Board Mount |
|-------------------------|-------------|

Housing Features

| | |
|---------------|---------------|
| Cage Material | Nickel Silver |
|---------------|---------------|

Dimensions

| | |
|-------------|------------------|
| Tail Length | 2.05 mm[.081 in] |
|-------------|------------------|

| | |
|-----------------------------|------------------|
| PCB Thickness (Recommended) | 2.25 mm[.089 in] |
|-----------------------------|------------------|

Usage Conditions

| | |
|-----------------------------|----------------------------|
| Operating Temperature Range | -55 – 105 °C[-67 – 221 °F] |
|-----------------------------|----------------------------|

Operation/Application

| | |
|----------------------|----|
| Heat Sink Compatible | No |
|----------------------|----|

| | |
|-------------------------------------|--------------------|
| For Use With Pluggable I/O Products | SFP+ SMT Connector |
|-------------------------------------|--------------------|

| | |
|----------------------------|------|
| Pluggable I/O Applications | SFP+ |
|----------------------------|------|

| | |
|---------------------|--------|
| Circuit Application | Signal |
|---------------------|--------|

Industry Standards

| | |
|------------------------|----------|
| UL Flammability Rating | UL 94V-0 |
|------------------------|----------|

Packaging Features

| | |
|------------------|-----------------|
| Packaging Method | Box & Tray, Box |
|------------------|-----------------|

Other

| | |
|------------------------------|------------------|
| EMI Containment Feature Type | External Springs |
|------------------------------|------------------|

| | |
|--------------------|-----|
| Included Lightpipe | Yes |
|--------------------|-----|

Product Compliance

[For compliance documentation, visit the product page on TE.com>](#)

| | |
|------------------------------|-----------|
| EU RoHS Directive 2011/65/EU | Compliant |
|------------------------------|-----------|

| | |
|-----------------------------|-----------|
| EU ELV Directive 2000/53/EC | Compliant |
|-----------------------------|-----------|

| | |
|---|---|
| China RoHS 2 Directive MIIT Order No 32, 2016 | No Restricted Materials Above Threshold |
|---|---|



EU REACH Regulation (EC) No. 1907/2006

Current ECHA Candidate List: JUNE 2022 (224)

Candidate List Declared Against: JAN 2022 (223)

SVHC > Threshold:
Not Yet Reviewed

Halogen Content

Not Low Halogen - contains Br or Cl > 900 ppm.

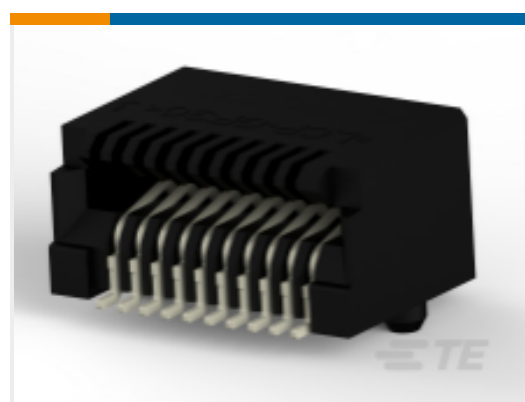
Solder Process Capability

Not applicable for solder process capability

Product Compliance Disclaimer

This information is provided based on reasonable inquiry of our suppliers and represents our current actual knowledge based on the information they provided. This information is subject to change. The part numbers that TE has identified as EU RoHS compliant have a maximum concentration of 0.1% by weight in homogenous materials for lead, hexavalent chromium, mercury, PBB, PBDE, DBP, BBP, DEHP, DIBP, and 0.01% for cadmium, or qualify for an exemption to these limits as defined in the Annexes of Directive 2011/65/EU (RoHS2). Finished electrical and electronic equipment products will be CE marked as required by Directive 2011/65/EU. Components may not be CE marked. Additionally, the part numbers that TE has identified as EU ELV compliant have a maximum concentration of 0.1% by weight in homogenous materials for lead, hexavalent chromium, and mercury, and 0.01% for cadmium, or qualify for an exemption to these limits as defined in the Annexes of Directive 2000/53/EC (ELV). Regarding the REACH Regulation, the information TE provides on SVHC in articles for this part number is based on the latest European Chemicals Agency (ECHA) 'Guidance on requirements for substances in articles' posted at this URL: <https://echa.europa.eu/guidance-documents/guidance-on-reach>

Compatible Parts



TE Part # CAT-SF59-C76264
SFP Connectors



TE Part # CAT-C11-H50626
SFP+ to SFP+ I/O Cable Assembly: 30 AWG



TE Part # CAT-C11-N490333
QSFP28-Four SFP+ Cable Assembly: 30 AWG



TE Part # CAT-C11-N490325
QSFP28-Four SFP+ Cable Assembly: 26 AWG



TE Part # 2334985-2
SFP28 DIRECT ATTACH CA, 1M, 32AWG



TE Part # CAT-C11-N490114
SFP28 to SFP28 Cable Assembly: 30 AWG



TE Part # CAT-C11-N49011
SFP28 to SFP28 Cable Assembly: 26 AWG



TE Part # CAT-Q17-N49011
QSFP56-Four SFP56 Cable Assembly: 30 AWG




TE Part # CAT-Q17-N490333
QSF56-Four SFP56 Cable Assembly: 26 AWG



TE Part # 4-2821222-5
SFP56 DIRECT ATTACH CA, 2M, 30AWG



TE Part # 4-2821224-5
SFP56 DIRECT ATTACH CA, 3M, 26AWG



TE Part # 4-2334985-2
SFP56 DIRECT ATTACH CA, 1M, 32AWG



TE Part # 1367147-1
SFP COVER, UNPLATED



TE Part # 1367147-3
SFP COVER, UNPL, NO LOGO



TE Part # 1761394-1
DUST COVER, SFP, GANGED & STACKED



TE Part # CAT-C11-H5
SFP+ to SFP+ I/O Cable Assembly: 24 AWG



TE Part # CAT-C11-H506
SFP+ to SFP+ I/O Cable Assembly: 26 AWG



TE Part # CAT-C11-H5062
SFP+ to SFP+ I/O Cable Assembly: 28 AWG



TE Part # 2018002-1
SEATING TOOL, 1X4 KIT



TE Part # 2142970-1
CABLE ASSY, MICRO SFP+ TO STD SFP+, 0.5M

Customers Also Bought



TE Part #2299804-1
LGA 3647 Socket Hardware



TE Part #1-1462038-6
IM06NS=IM RELAY 140 MW 12 V



TE Part #2-2129710-5
LGA 3647 SOCKETS



TE Part #1888247-2
20 POS SMT CONN, SFP/SFP+, 15A



TE Part #5120789-1
ZP HS3 DB 06R REC 030P LT PD



TE Part #2289129-2
ZQSFP+ CAGE& CONN 2X2, EMI SPRING, 4 LP



TE Part #2289129-3
ZQSFP+ CAGE& CONN 2X2, EMI SPRING, 4 LP

Documents



Product Drawings

[SFP+ 1x4 Cage Assembly, Light](#)

English

CAD Files

Customer View Model

[ENG_CVM_CVM_2007178-1_C.2d_dxf.zip](#)

English

[3D PDF](#)

3D

Customer View Model

[ENG_CVM_CVM_2007178-1_C.3d_igs.zip](#)

English

Customer View Model

[ENG_CVM_CVM_2007178-1_C.3d_stp.zip](#)

English

By downloading the CAD file I accept and agree to the [Terms and Conditions](#) of use.

Datasheets & Catalog Pages

[1773408-1 Pluggable Input/Output Solutions catalog - SFP+ section](#)

English

[SFP+ Product Family: Cages, Connectors, Cable Assemblies 4-1773449-5](#)

English

[4-1773455-3 - Quick Reference Guide SFP+ Solutions](#)

English

Product Specifications

[Application Specification](#)

English

Product Environmental Compliance

[MD_2007178-1_10282015638_dmtec](#)

English

[MD_2007178-1_10282015638_dmtec](#)

English