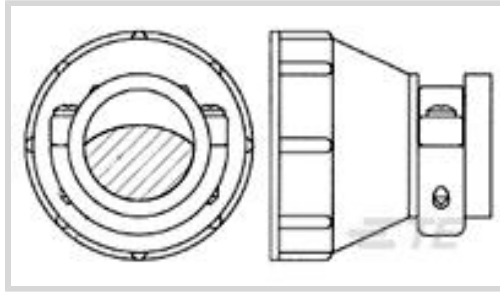




Connectors > Circular Connectors > Circular Connector Accessories > Unscreened Circular Connector Backshells & Clamps > CMC CABLE CLAMPS



Backshell & Clamp Accessory Type: **Cable Clamp**

Compatible With Circular Connector Shell Size: **14**

Body Orientation: **Straight**

Accepts Cable Diameter (Max): **14.27 mm [.562 in]**

Protective Cover: **Without**

[All CMC CABLE CLAMPS \(3\)](#)

Features

Product Type Features

| | |
|----------------------------------|-------------|
| Product Type | Accessory |
| Backshell & Clamp Accessory Type | Cable Clamp |
| Protective Cover | Without |

Body Features

| | |
|------------------------------|------------|
| Cable Clamp Plating Material | Nickel |
| Cable Clamp Material | Zinc Alloy |
| Cable Clamp Color | Black |

Mechanical Attachment

| | |
|--------------------------|----------------|
| Screw & Hole Thread Size | 7/8-20 UNEF-3B |
|--------------------------|----------------|

Housing Features

| | |
|------------------|----------|
| Body Orientation | Straight |
|------------------|----------|

Dimensions

| | |
|------------------------------|-------------------|
| Accepts Cable Diameter (Max) | 14.27 mm[.562 in] |
|------------------------------|-------------------|

Operation/Application

| | |
|---|----|
| Compatible With Circular Connector Shell Size | 14 |
|---|----|

Packaging Features

| | |
|--------------------|---|
| Packaging Quantity | 1 |
|--------------------|---|



Packaging Method

Bag

Product Compliance

[For compliance documentation, visit the product page on TE.com>](#)

EU RoHS Directive 2011/65/EU

Compliant

EU ELV Directive 2000/53/EC

Compliant

China RoHS 2 Directive MIIT Order No 32, 2016

No Restricted Materials Above Threshold

EU REACH Regulation (EC) No. 1907/2006

Current ECHA Candidate List: JUNE 2022 (224)
 Candidate List Declared Against: JAN 2022 (223)
 SVHC > Threshold:
 Not Yet Reviewed

Halogen Content

Low Halogen - Br, Cl, F, I < 900 ppm per homogenous material. Also BFR/CFR/PVC Free

Solder Process Capability

Not applicable for solder process capability

Product Compliance Disclaimer

This information is provided based on reasonable inquiry of our suppliers and represents our current actual knowledge based on the information they provided. This information is subject to change. The part numbers that TE has identified as EU RoHS compliant have a maximum concentration of 0.1% by weight in homogenous materials for lead, hexavalent chromium, mercury, PBB, PBDE, DBP, BBP, DEHP, DIBP, and 0.01% for cadmium, or qualify for an exemption to these limits as defined in the Annexes of Directive 2011/65/EU (RoHS2). Finished electrical and electronic equipment products will be CE marked as required by Directive 2011/65/EU. Components may not be CE marked. Additionally, the part numbers that TE has identified as EU ELV compliant have a maximum concentration of 0.1% by weight in homogenous materials for lead, hexavalent chromium, and mercury, and 0.01% for cadmium, or qualify for an exemption to these limits as defined in the Annexes of Directive 2000/53/EC (ELV). Regarding the REACH Regulation, the information TE provides on SVHC in articles for this part number is based on the latest European Chemicals Agency (ECHA) 'Guidance on requirements for substances in articles' posted at this URL: <https://echa.europa.eu/guidance-documents/guidance-on-reach>

Compatible Parts



Also in the Series | [AMP CPC](#)



Circular Connector Adapters(7)



Circular Connector Boots & Strain Relief(6)



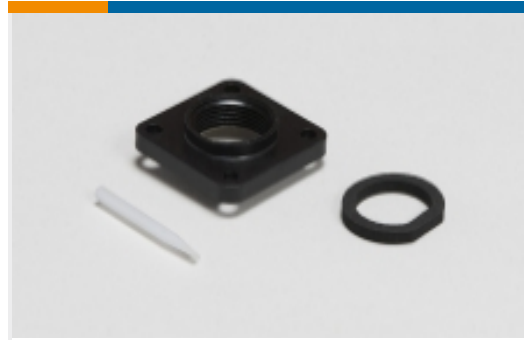
Circular Connector Caps & Covers(16)



Circular Connector Hardware(3)



Circular Connector Keying Plugs(2)



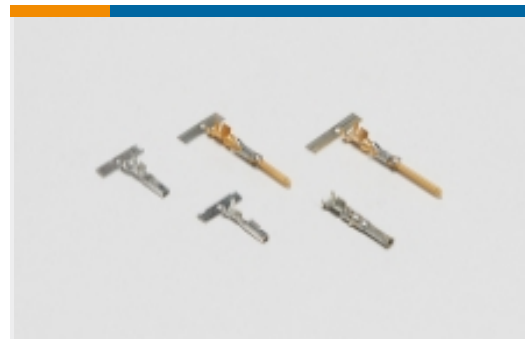
Circular Connector Seals(36)



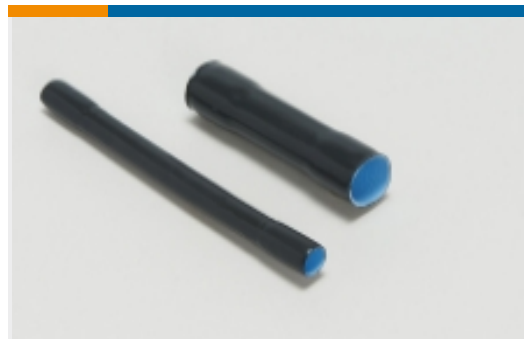
Circular Power Connectors(516)



Insertion & Extraction Tools(1)



Power Contacts(6)



Sealing Sleeves(2)



Unscreened Circular Connector Backshells & Clamps(56)

Customers Also Bought



TE Part #208719-1
CMC SERIES 1



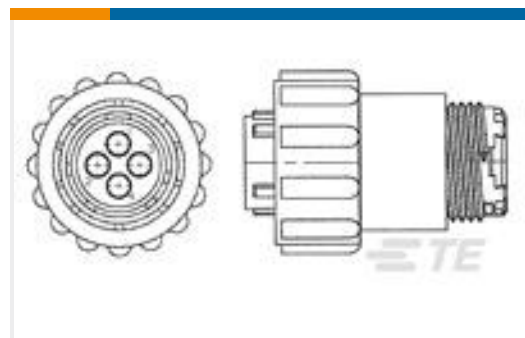
TE Part #211401-4
RECEPT,SZ 13-7,CPC



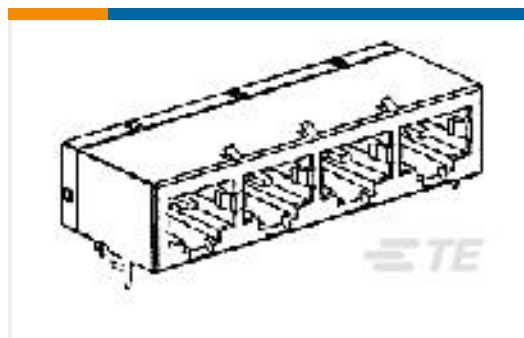
TE Part #1-2308298-1
QL-SET FOR VAR. E LATCH PIN WITH
GUIDE 1



TE Part #T4171010002-001
M12,REAR MOUNTING,MALE,A,2P,0.2
M WIRE



TE Part #796274-2
SLD CPC PLUG ASSY,17-16,STD SX



TE Part #5558524-1
MJ,1X4,R/A,8P,P/NL GND,CAT5 NT

Documents



Product Drawings

[SZ 14 UNASSM KIT,CMC](#)

English

CAD Files

[3D PDF](#)

3D

Customer View Model

[ENG_CVM_CVM_208945-5_J.2d_dxf.zip](#)

English

Customer View Model

[ENG_CVM_CVM_208945-5_J.3d_igs.zip](#)

English

Customer View Model

[ENG_CVM_CVM_208945-5_J.3d_stp.zip](#)

English

[3D PDF](#)

English

Customer View Model

[ENG_CVM_208945-5_K.2d_dxf.zip](#)

English

Customer View Model

[ENG_CVM_208945-5_K.3d_igs.zip](#)

English

Customer View Model

[ENG_CVM_208945-5_K.3d_stp.zip](#)

English

By downloading the CAD file I accept and agree to the [Terms and Conditions](#) of use.

Datasheets & Catalog Pages

[1-1773902-9_CPC_Catalog](#)

German

[1-1773902-9_CPC_Catalog](#)

English

[1-1773902-9_CPC_Catalog](#)

[1-1773902-9_CPC_Catalog](#)

Japanese

[AMP Circular Connectors for Commercial Signal & Power Applications Continued](#)

English

Product Environmental Compliance

[Product Compliance](#)

English

[Product Compliance](#)

English



[Agency Approvals](#)

[CSA Certificate](#)

English