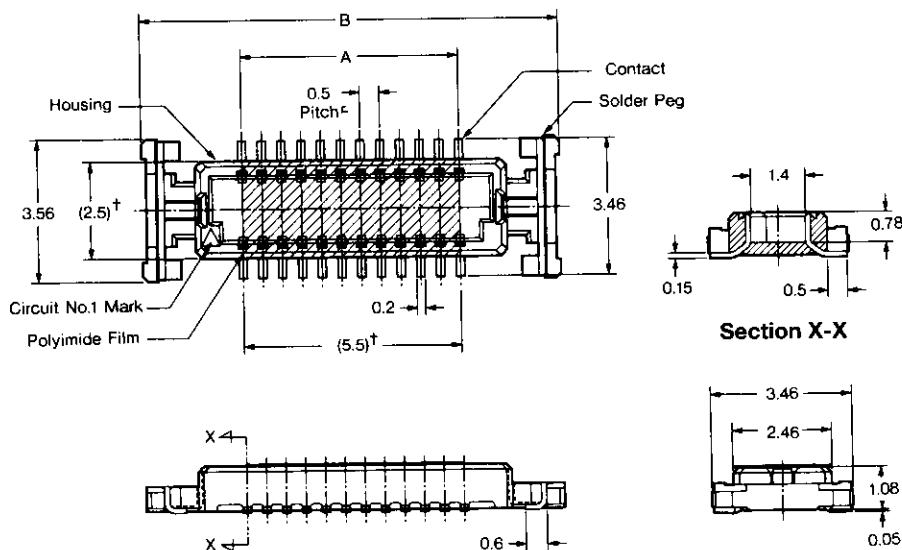


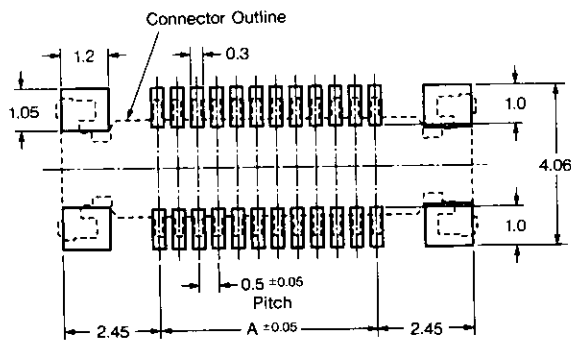
Board to Board Connectors  
0.5 0.8mm FS (Fine-Stack) B to B Connectors

0.5mm Pitch  
Tab Assembly,  
With Key Housing,  
With Polyimide Film

**Material and finish :**  
Housing—glassfiber reinforced  
6T nylon (heat resistant), black  
Contact—0.15mm thick  
copper alloy, gold plated  
Solder peg—0.15mm thick  
copper alloy, tin-lead plated or  
tin plated



† Dimension of Polyimide Film



**PC Board Layout**  
(Board thickness : 0.6mm Min.)

No. of Pos.	Dimensions		Part Number of Tab Assembly (Tape Mounted)	Width of Tape
	A	B		
20	4.5	9.6	2-353515-0	24
30	7.0	12.1	3-353515-0	24
40	9.5	14.6	4-353515-0	24

Note : One each tape is loaded 1,500 assemblies.