

2102773-1 ✓ ACTIVE

MULTIGIG RT | MULTIGIG RT 2-R

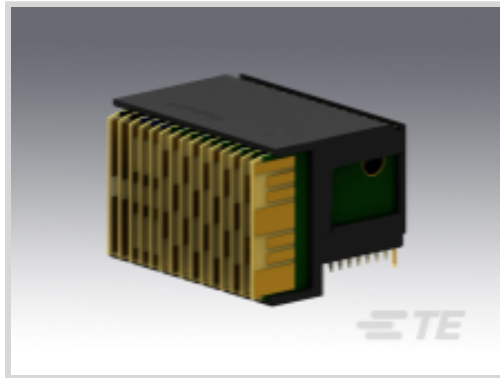
TE Internal #: 2102773-1

High Speed Backplane Connectors, Board-to-Board, 112 Position,  
Mating Alignment, 7 Row, 16 Column, PCB Mount Header,  
MULTIGIG RT 2-R

[View on TE.com >](#)



Connectors > PCB Connectors > Backplane Connectors > High Speed Connectors



Connector System: **Board-to-Board**

Number of Positions: **112**

Row-to-Row Spacing: **1.35 mm [ .053 in ]**

Mating Alignment: **With**

Number of Rows: **7**

## Features

### Product Type Features

Applied to Printed Circuit Board Type	Daughtercard
Connector System	Board-to-Board
PCB Connector Assembly Type	PCB Mount Header
Shroud Style	Fully Shrouded
Connector & Contact Terminates To	Printed Circuit Board

### Configuration Features

Number of Positions	112
Number of Rows	7
Number of Columns	16
Backplane Architecture	Traditional Backplane
PCB Mount Orientation	Right Angle
Guide Location	Center

### Contact Features

Contact Current Rating (Max)	1.5 A
------------------------------	-------

### Mechanical Attachment

Mating Alignment	With
Connector Mounting Type	Board Mount



### Housing Features

Number of Shrouded Sides	2
Centerline (Pitch)	1.9 mm[.075 in]

### Dimensions

Row-to-Row Spacing	1.35 mm[.053 in]
--------------------	------------------

### Usage Conditions

Operating Temperature Range	-55 – 125 °C[-67 – 257 °F]
-----------------------------	----------------------------

### Operation/Application

Circuit Application	Power & Signal
---------------------	----------------

## Product Compliance

[For compliance documentation, visit the product page on TE.com>](#)

EU RoHS Directive 2011/65/EU	Not Compliant
EU ELV Directive 2000/53/EC	Not Compliant
China RoHS 2 Directive MIIT Order No 32, 2016	Restricted Materials Above Threshold
EU REACH Regulation (EC) No. 1907/2006	Current ECHA Candidate List: JUNE 2022 (224) Candidate List Declared Against: JUL 2021 (219) SVHC > Threshold: Pb (7% in contact plating) <b>Article Safe Usage Statements:</b> Do not eat, drink or smoke when using this product. Wash thoroughly after handling. Recycle if possible and dispose of the article by following all applicable governmental regulations relevant to your geographic location.
Halogen Content	Not Low Halogen - contains Br or Cl > 900 ppm.
Solder Process Capability	Not applicable for solder process capability

#### Product Compliance Disclaimer

This information is provided based on reasonable inquiry of our suppliers and represents our current actual knowledge based on the information they provided. This information is subject to change. The part numbers that TE has identified as EU RoHS compliant have a maximum concentration of 0.1% by weight in homogenous materials for lead, hexavalent chromium, mercury, PBB, PBDE, DBP, BBP, DEHP, DIBP, and 0.01% for cadmium, or qualify for an exemption to these limits as defined in the Annexes of Directive 2011/65/EU (RoHS2). Finished electrical and electronic equipment products will be CE marked as required by Directive 2011/65/EU. Components may not be CE marked. Additionally, the part numbers that TE has identified as EU ELV compliant have a maximum concentration of 0.1% by weight in homogenous materials for lead, hexavalent chromium, and mercury, and 0.01% for cadmium, or qualify for an exemption to these limits as defined in the Annexes of Directive 2000/53/EC (ELV). Regarding the REACH Regulation, the information TE provides on SVHC in articles for this part number is based on the latest European Chemicals Agency (ECHA) 'Guidance on requirements for substances in articles' posted at this URL: <https://echa.europa.eu/guidance-documents/guidance-on-reach>



## Compatible Parts



TE Part # 2000676-1  
Keyed Guide Pin, Machined, Vita 46



TE Part # 2000713-1  
RA Keyed Guide Mod, Vita 46, Machined

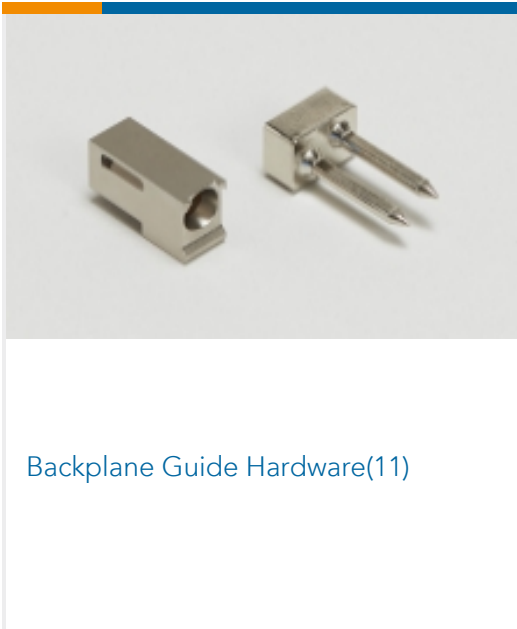


TE Part # 2302785-1  
RA PLUG ASSY, 7ROW, CENTER, VPX, MG RT3

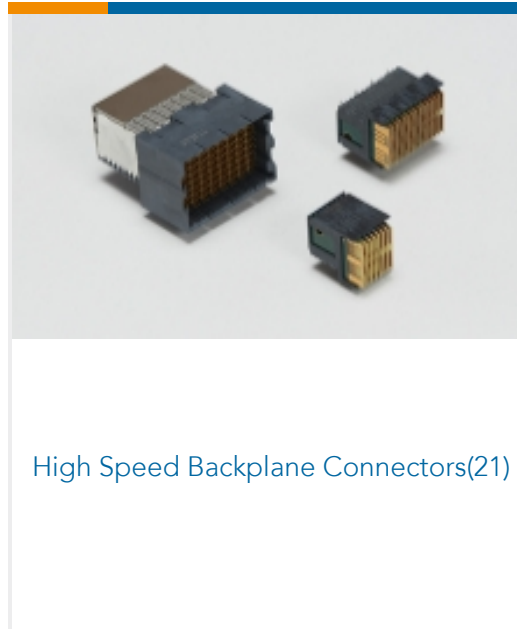


TE Part # 2302317-1  
RA ASSY, 7 Row, Cent DP, MULTIGIG RT 2-S

## Also in the Series | MULTIGIG RT 2-R



Backplane Guide Hardware(11)

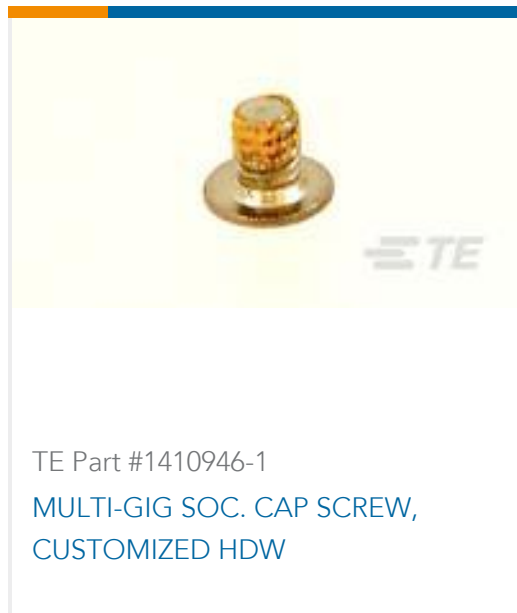


High Speed Backplane Connectors(21)

## Customers Also Bought



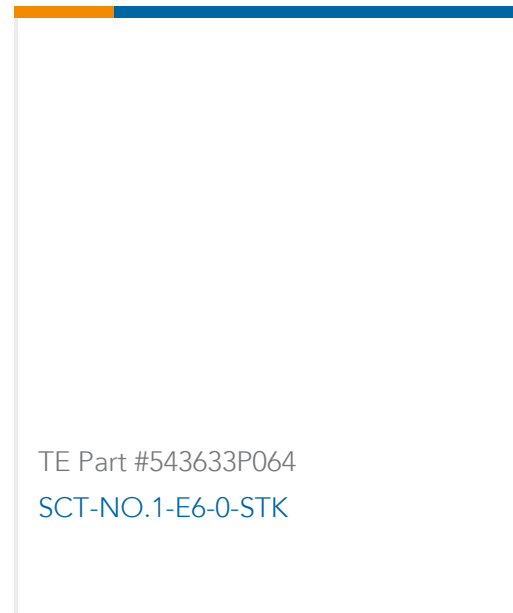
TE Part #2102771-1  
DC, 7Row, Center, MULTIGIG RT 2R



TE Part #1410946-1  
MULTI-GIG SOC. CAP SCREW, CUSTOMIZED HDW



TE Part #1-1469492-9  
MULTIGIG RT 9MM GUIDE/ESD UNKE



TE Part #543633P064  
SCT-NO.1-E6-0-STK



TE Part #2-1614884-5  
CPF 0805 22R 0.1% 25PPM 1K RL



TE Part #6-1879336-6  
CPF 0603 1K1 1% 50PPM 1K RL



TE Part #2102772-1  
DC, 7Row, Half Left End, MULTIGIG RT 2R



TE Part #NB14862001  
DWP-125-1/4-0-STK

## Documents

### Product Drawings

DC, 7Row, Center, RTM, MULTIGIG RT 2R

English

### CAD Files



### 3D PDF

3D

#### Customer View Model

[ENG\\_CVM\\_CVM\\_2102773-1\\_C\\_c-2102773-1-c.2d\\_dxf.zip](#)

English

#### Customer View Model

[ENG\\_CVM\\_CVM\\_2102773-1\\_C\\_c-2102773-1-c.3d\\_igs.zip](#)

English

#### Customer View Model

[ENG\\_CVM\\_CVM\\_2102773-1\\_C\\_c-2102773-1-c.3d\\_stp.zip](#)

English

By downloading the CAD file I accept and agree to the [Terms and Conditions](#) of use.

### Datasheets & Catalog Pages

[MULTIGIG RT 2-R Ruggedized Connectors](#)

English

### Product Specifications

[Product Specification](#)

English

### Instruction Sheets

[Instruction Sheet \(U.S.\)](#)

English