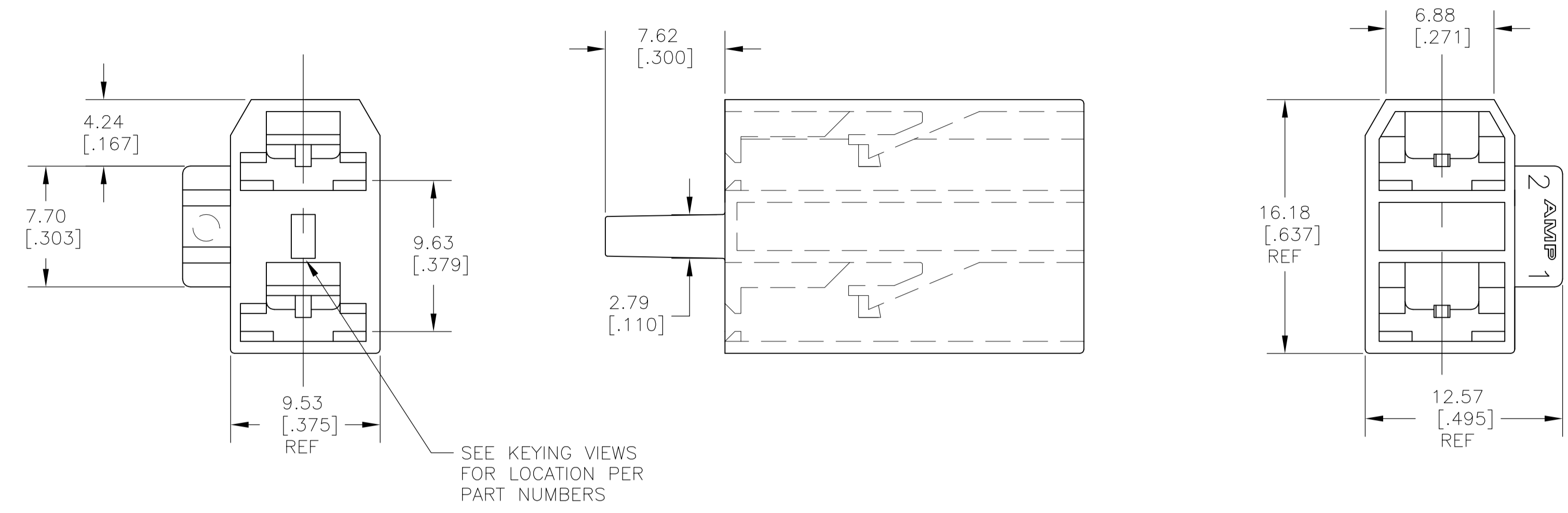
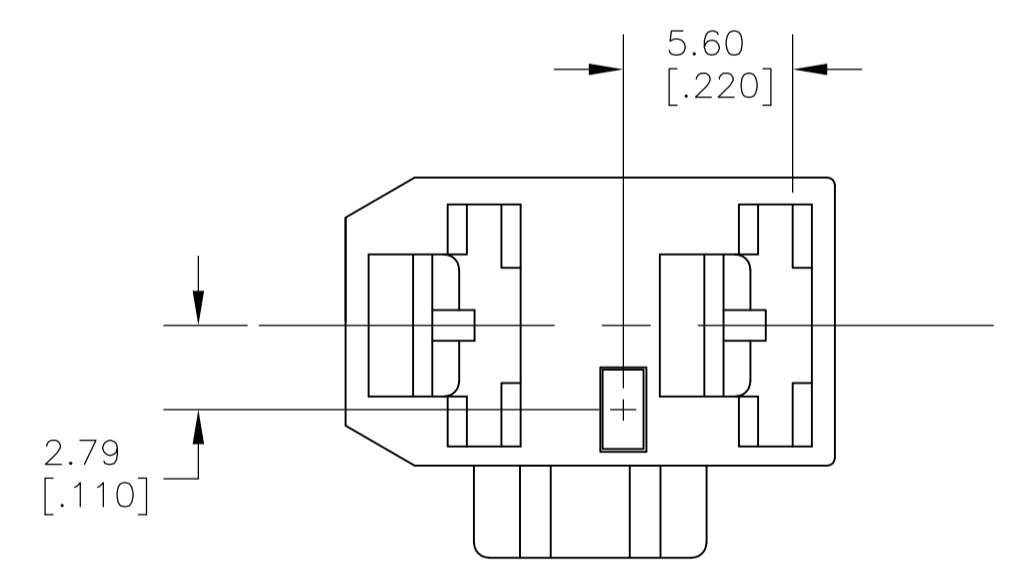
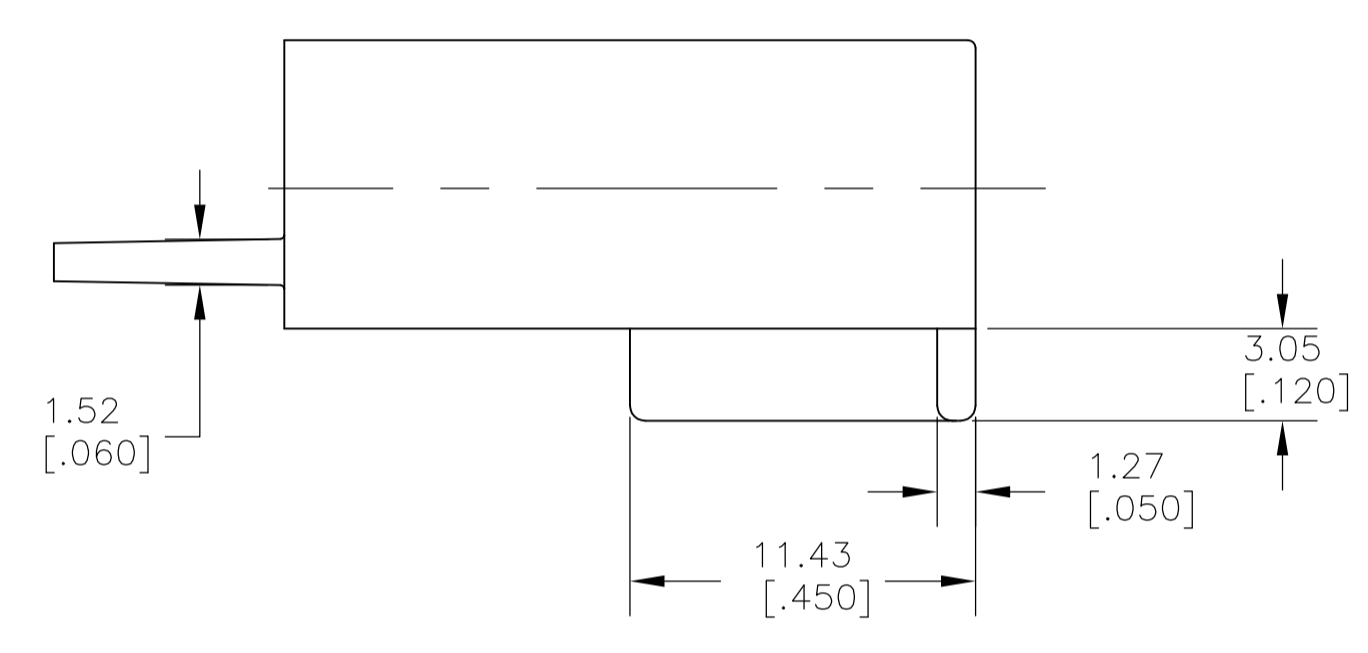


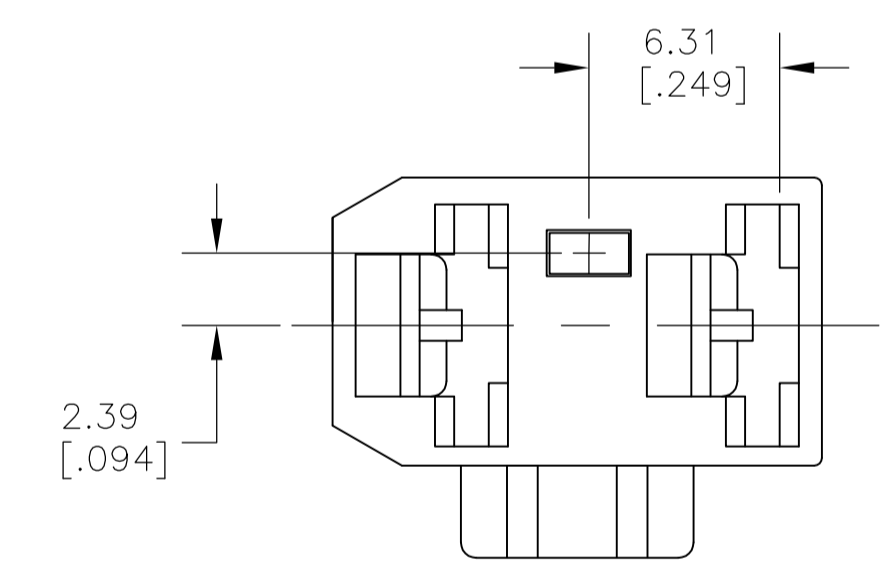
REVISIONS				
P	LTR	DESCRIPTION	DATE	BY
A7		REVISED PER ECR-18-002780	12MAR2018	BDA DS



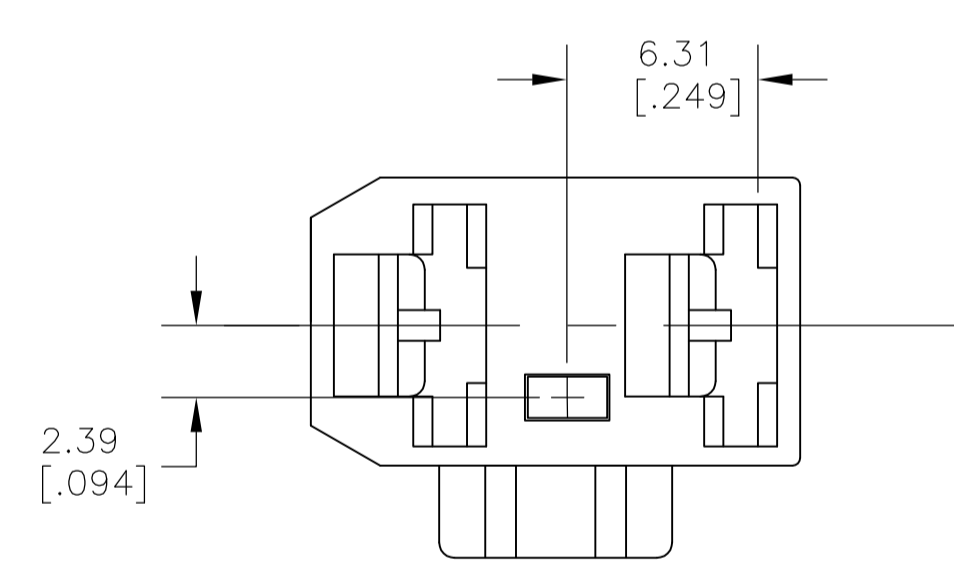
- 1 FITS 6.35 [.250] SERIES FASTON RECEPTACLES.
- 2 PRELIMINARY - NOT FOR PRODUCTION
- 3 OBSOLETE PARTS
- 4 NOT FOR PRODUCTION: AGENCY APPROVAL IS PENDING.



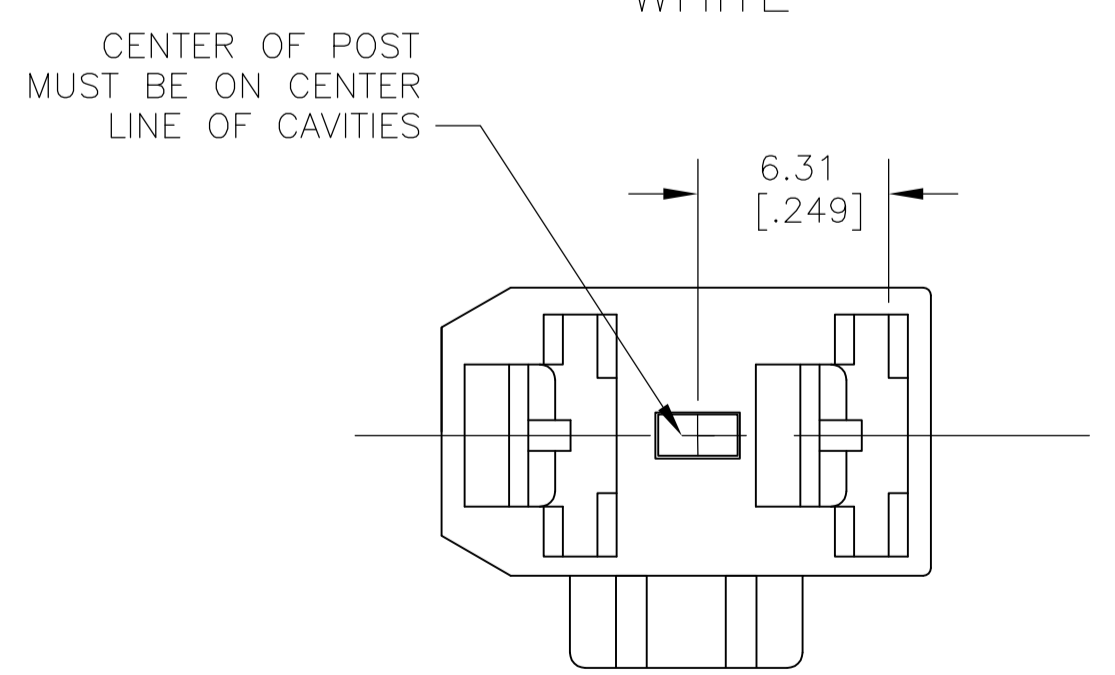
KEYING FOR -1 & -7 PART WHITE



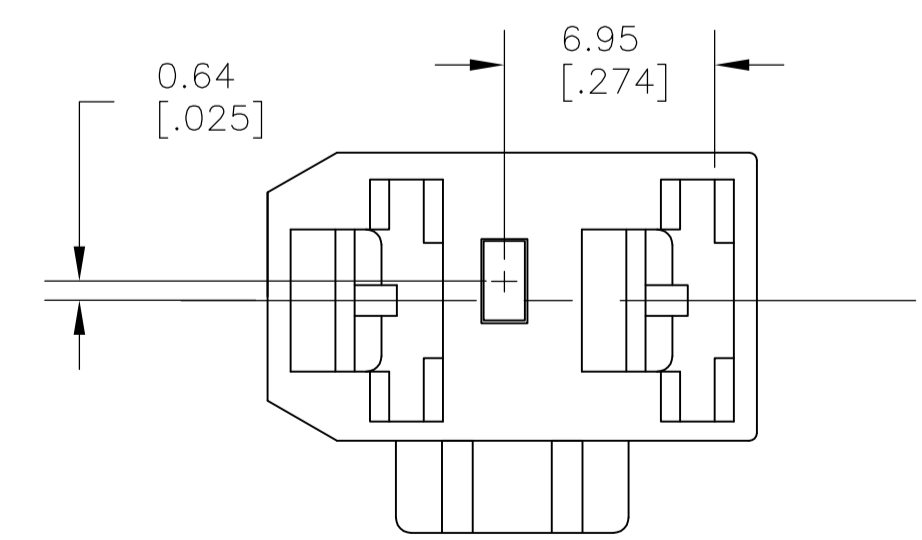
KEYING FOR -3 PART YELLOW



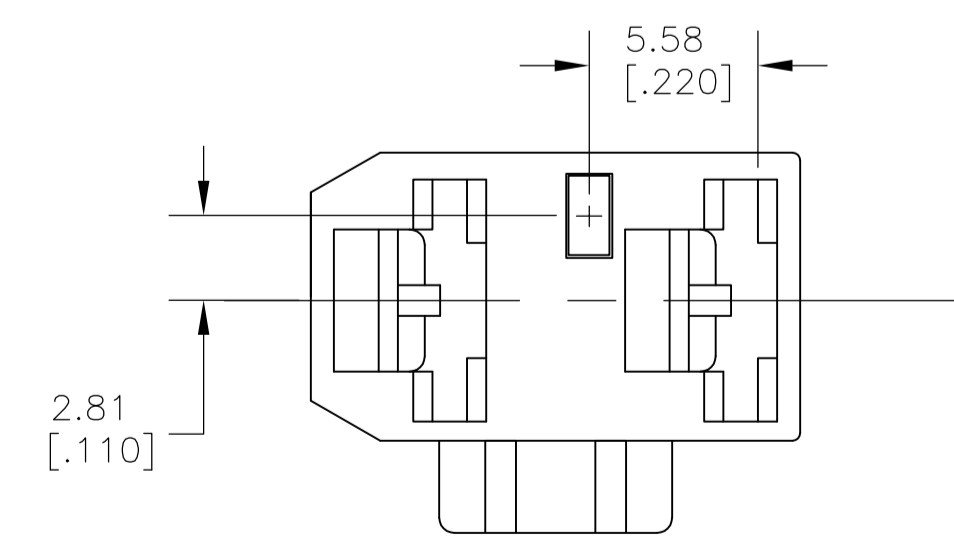
KEYING FOR -5 PART BLUE



KEYING FOR -2 & -8 PART GREEN



KEYING FOR -4 & 1-0 PART BLACK



KEYING FOR -6 PART RED

COLOR	MATERIAL	PART NO
WHITE	66 NYLON WHITE	1-1969141-1
BLACK	6/6 NYLON, V2	2 1-1969141-0
GREEN	6/6 NYLON, V2	2 1969141-8
WHITE	6/6 NYLON, V2	2 1969141-7
RED	66, NYLON, V0	2 1969141-6
BLUE	66, NYLON, V0	2 1969141-5
BLACK	66, NYLON, V0	2 1969141-4
YELLOW	66, NYLON, V0	2 1969141-3
GREEN	66, NYLON, V0	3 1969141-2
WHITE	66, NYLON, V0	1969141-1
COLOR	MATERIAL	PART NO

THIS DRAWING IS A CONTROLLED DOCUMENT.

TE Connectivity Ltd.

HOUSING, RECEPTACLE, FASTON, 6.35 [.250] SERIES, 2 CIRCUIT

SCALE: 4:1 SHEET 1 OF 1 REV A7