

PLEASE CHECK WWW.MOLEX.COM FOR LATEST PART INFORMATION

Part Number: [2005010122](#)
Status: **Active**
Overview: [stAK50h Connection System](#)
Description: stAK50h Vertical Hybrid Header, 12 Circuits, Key 2, Green, Tube

Documents:

3D Model	Application Specification 2005060000-AS-000 (PDF)
Drawing (PDF)	Test Summary 2005010120-TS-000 (PDF)
3D Model (PDF)	Datasheet (PDF)
Product Specification 2005060001-PS-000 (PDF)	RoHS Certificate of Compliance (PDF)

General

Product Family	PCB Headers
Series	200501
Application	Automotive, Power, Signal, Wire-to-Board
Overview	stAK50h Connection System
Product Name	stAK50h
UPC	889056679428

Physical

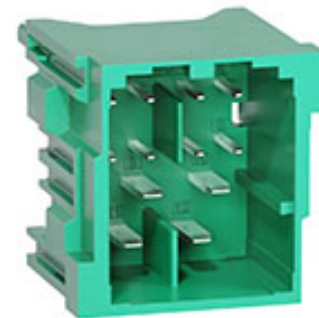
Breakaway	No
Circuits (Loaded)	12
Circuits (maximum)	12
Color - Resin	Green
Durability (mating cycles max)	10
First Mate / Last Break	No
Glow-Wire Capable	No
Guide to Mating Part	Yes
Keying to Mating Part	Yes
Lock to Mating Part	Yes
Material - Metal	Copper Alloy
Material - Plating Mating	Tin
Material - Plating Termination	Tin
Material - Resin	SPS
Net Weight	6.781/g
Number of Rows	4
Orientation	Vertical
PCB Locator	Yes
PCB Retention	None
PCB Thickness - Recommended	1.60mm
Packaging Type	Tube
Pitch - Mating Interface	2.00mm, 4.00mm, 5.20mm, 7.20mm
Pitch - Termination Interface	2.00mm, 3.20mm, 4.00mm, 5.20mm
Polarized to Mating Part	Yes
Polarized to PCB	Yes
Shrouded	Yes
Stackable	Yes
Surface Mount Compatible (SMC)	Yes
Temperature Range - Operating	-40° to +85°C
Termination Interface: Style	Through Hole

Electrical

Current - Maximum per Contact	12.0A, 30.0A
Voltage - Maximum	500V DC

Material Info

Reference - Drawing Numbers



Series image - Reference only

EU ELV

Compliant

EU RoHS

Compliant

REACH SVHC

Not Contained Per -
D(2020)4578-DC (25
June 2020)

Halogen-Free

Status

Not Relevant

For more information, please visit [Contact US](#)

China ROHS

Not Relevant

ELV

Compliant

RoHS Phthalates

Not Contained

Search Parts in this Series

[200501](#) Series

Mates With

[1600260002](#)

Application Specification
Product Specification
Sales Drawing
Test Summary

2005060000-AS-000
2005060001-PS-000
2005011120SD-000
2005010120-TS-000

This document was generated on 07/29/2020

PLEASE CHECK WWW.MOLEX.COM FOR LATEST PART INFORMATION