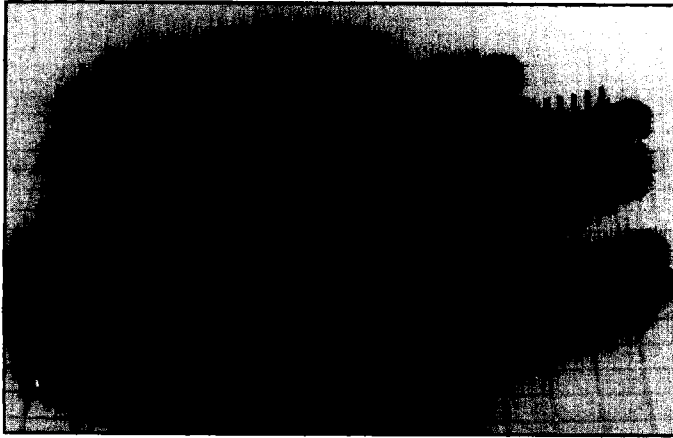


.156" (3.96mm) Series 179 Right Angle Connector



**.156 (3.96) Centers
Card Edge
Tuning Fork Contacts**



Features

- Single readout tuning fork contacts
- Will accept printed circuit board thickness variation of .054 to .070 (1.37 to 1.78)
- Various mounting styles — thru holes, floating grommets, threaded inserts and right angle brackets
- Choice of solder eyelet, dip solder or solderless wire wrappost terminals
- In and between contact polarization

Specifications

Operating Voltage: 600 VAC rms at sea level

Current Rating: 5 Amps continuous

Contact Resistance: 6 milliohms, 30 millivolts at rated current

Contact Material: Copper alloy

Contact Plating: See part number coding

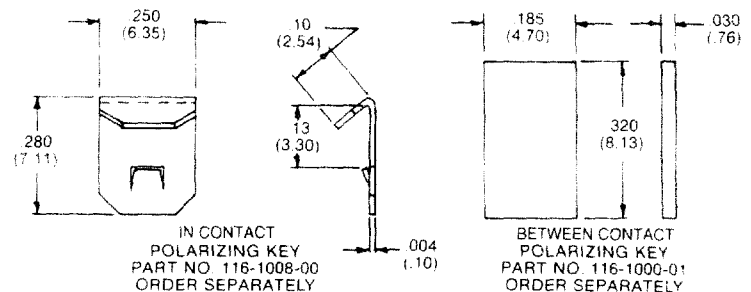
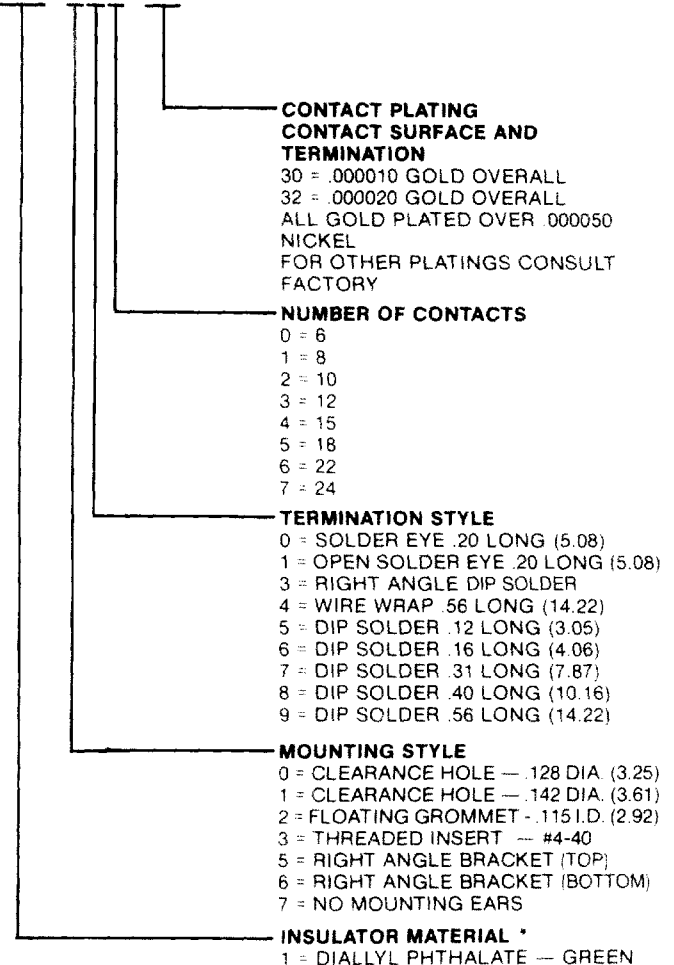
Insulator Material: Diallyl phthalate, glass filled, flame resistant per MIL-M-14, Type SDG-F, green; phenolic, glass filled per MIL-M-14, Type MFH, black

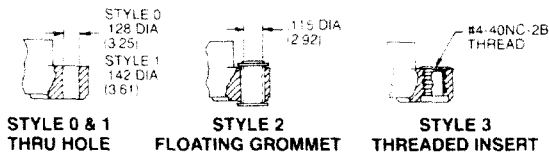
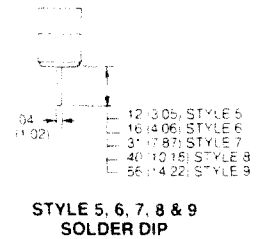
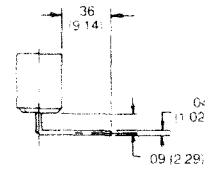
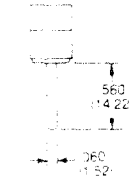
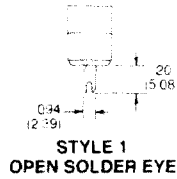
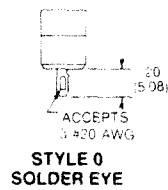
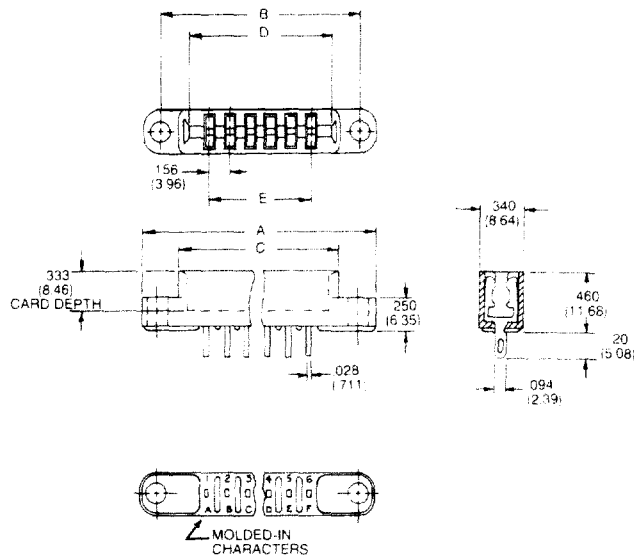
In Contact Polarization Keys: P/N 116-1008-00, order separately

Between Contact Polarization Keys: P/N 116-1000-01, order separately

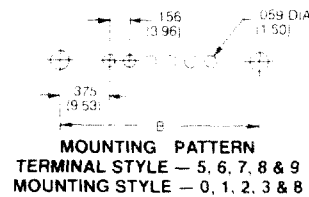
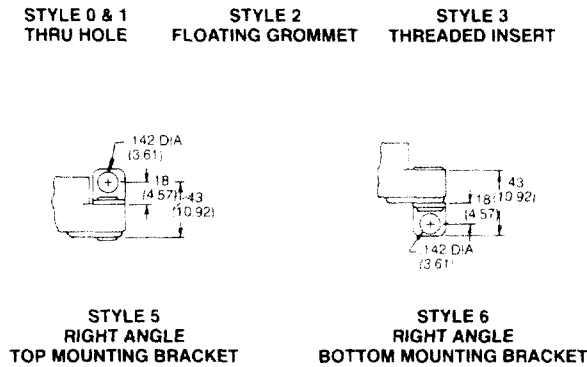
PART NUMBER CODING

179 - XXX - XX

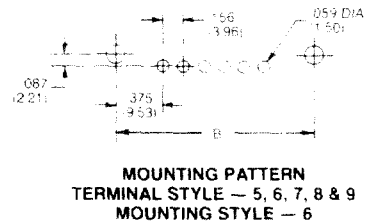
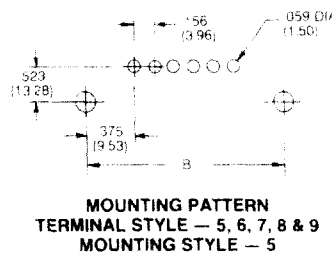




**STYLE 3
RIGHT ANGLE, DIP SOLDER
TERMINATION STYLE**



MOUNTING STYLE



**MOUNTING PATTERN
TERMINAL STYLE - 5, 6, 7, 8 & 9
MOUNTING STYLE - 5**

**MOUNTING PATTERN
TERMINAL STYLE - 5, 6, 7, 8 & 9
MOUNTING STYLE - 6**

PART NUMBER	NUMBER OF CONTACTS	NUMBER OF CONTACTS				
		A	B	C	D	E
X79-XX0-XX	6	1.785 (45.34)	1.531 (38.89)	1.239 (31.47)	1.099 (27.91)	.781 (19.84)
X79-XX1-XX	8	2.097 (53.26)	1.843 (46.81)	1.551 (39.40)	1.411 (35.84)	1.093 (27.76)
X79-XX2-XX	10	2.410 (61.21)	2.156 (54.76)	1.864 (47.35)	1.724 (43.79)	1.406 (35.71)
X79-XX3-XX	12	2.722 (69.14)	2.468 (62.69)	2.176 (55.27)	2.036 (51.71)	1.718 (43.64)
X79-XX4-XX	15	3.191 (81.05)	2.937 (74.60)	2.645 (67.18)	2.505 (63.63)	2.187 (55.55)
X79-XX5-XX	18	3.659 (92.94)	3.405 (86.49)	3.113 (79.07)	2.973 (75.51)	2.655 (67.44)
X79-XX6-XX	22	4.284 (108.81)	4.030 (102.36)	3.738 (94.95)	3.596 (91.39)	3.280 (83.31)
X79-XX7-XX	24	4.597 (116.76)	4.343 (110.31)	4.051 (102.90)	3.911 (99.34)	3.593 (91.26)

ALL DIMENSIONS ARE IN INCHES
DIMENSIONS IN () ARE IN MILLIMETERS