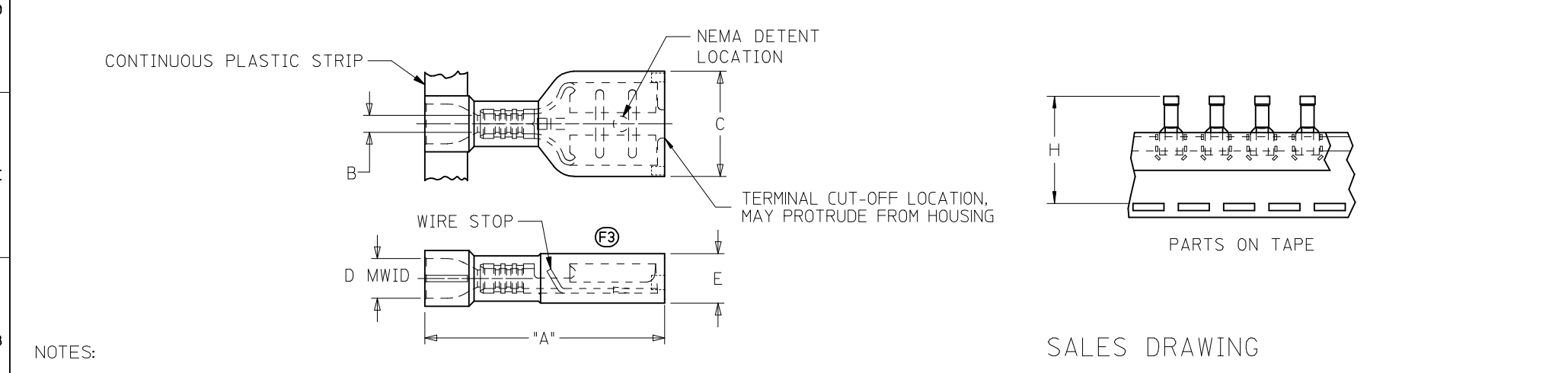


10	9	8	7	6	5	4	3	2	19003						
LOOSE PIECE MATERIAL NUMBER	LOOSE PIECE ENGRNG NUMBER	CONTINUOUS STRIP MATERIAL NUMBER	CONTINUOUS STRIP ENGRNG NUMBER	MYLAR TAPE MATERIAL NUMBER	MYLAR TAPE ENGRNG NUMBER	WIRE RANGE AWG	FITS MALE TAB SIZE	INSULATION COLOR	STOCK THICK.	"A" MAX.	"B" MIN.	"C" MAX.	"D" MWID	"E" MAX.	"H" ±.02/0.5
F 190030071	M-2212	190030106	M-2212C	190030073	M-2212T	26-24	.250x.032 (6.35x0.81)	YELLOW	.016/0.41	.86/21.8	.028/0.71	.38/9.7	.075/1.90	.18/4.6	1.42/35.9
190030064	M-2210	190030103	M-2210C	190030067	M-2210T	26-24	.187x.020 (4.75x0.51)	YELLOW	.016/0.41	.78/19.8	.028/0.71	.32/8.1	.075/1.90	.16/4.1	1.38/34.9
190030068	M-2211	190030104	M-2211C	190030070	M-2211T	26-24	.187x.032 (4.75x0.81)	DK YELLOW	.016/0.41	.78/19.8	.028/0.71	.32/8.1	.075/1.90	.16/4.1	1.38/34.9
190030001	AA-2201	190030105	AA-2201C	190030003	AA-2201T	22-18	.250x.032 (6.35x0.81)	SALMON	.016/0.41	.86/21.8	.056/1.42	.38/9.7	.135/3.43	.18/4.6	1.42/35.9
190030036	AA-2213	190030109	AA-2213C	190030074	AA-2213T	22-18	.205x.020 (5.21x0.51)	SALMON	.016/0.41	.78/19.8	.056/1.42	.32/8.1	.135/3.43	.16/4.1	1.38/34.9
190030038	AA-2214	190030110	AA-2214C	190030075	AA-2214T	22-18	.205x.032 (5.21x0.81)	PINK	.016/0.41	.78/19.8	.056/1.42	.32/8.1	.135/3.43	.16/4.1	1.38/34.9
190030011	AA-2202	190030107	AA-2202C	190030013	AA-2202T	22-18	.187x.020 (4.75x0.51)	SALMON	.016/0.41	.78/19.8	.056/1.42	.32/8.1	.135/3.43	.16/4.1	1.38/34.9
190030017	AA-2203	190030108	AA-2203C	190030020	AA-2203T	22-18	.187x.032 (4.75x0.81)	PINK	.016/0.41	.78/19.8	.056/1.42	.32/8.1	.135/3.43	.16/4.1	1.38/34.9
E 190030024	AA-2204	190030097	AA-2204C	190030026	AA-2204T	22-18	.110x.020 (2.79x0.51)	SALMON	.012/0.30	.78/19.8	.056/1.42	.23/5.9	.135/3.43	.15/3.8	1.39/35.3
190030030	AA-2205	190030098	AA-2205C	190030032	AA-2205T	22-18	.110x.032 (2.79x0.81)	PINK	.012/0.30	.78/19.8	.056/1.42	.23/5.9	.135/3.43	.15/3.8	1.39/35.3
190030040	BB-2206	190030041	BB-2206C	190030042	BB-2206T	16-14	.250x.032 (6.35x0.81)	BLUE	.016/0.41	.86/21.8	.079/2.00	.38/9.7	.160/4.06	.18/4.6	1.42/35.9
190030062	BB-2215	190030085	BB-2215C	190030077	BB-2215T	16-14	.205x.020 (5.21x0.51)	BLUE	.016/0.41	.78/19.8	.079/2.00	.32/8.1	.160/4.06	.17/4.3	1.41/35.7
190030063	BB-2216	190030086	BB-2216C	190030078	BB-2216T	16-14	.205x.032 (5.21x0.81)	AQUA	.016/0.41	.78/19.8	.079/2.00	.32/8.1	.160/4.06	.17/4.3	1.41/35.7
190030050	BB-2207	190030051	BB-2207C	190030052	BB-2207T	16-14	.187x.020 (4.75x0.51)	BLUE	.016/0.41	.78/19.8	.079/2.00	.32/8.1	.160/4.06	.17/4.3	1.41/35.7
190030056	BB-2208	190030057	BB-2208C	190030058	BB-2208T	16-14	.187x.032 (4.75x0.81)	AQUA	.016/0.41	.78/19.8	.079/2.00	.32/8.1	.160/4.06	.17/4.3	1.41/35.7
196060002	C-2293	196060001	C-2293C	196060003	C-2293T	12-10	.250x.032 (6.35x0.81)	YELLOW	.018/0.46	1.03/26.1	.117/2.97	.38/9.7	.235/5.97	.22/5.6	1.53/38.9



- NOTES:
- MATERIAL: TERMINAL: BRASS
PLATING: ELECTRO-TIN
FERRULE: BRASS
PLATING: ELECTRO-TIN
INSULATION: NYLON 6/6 94V-2.
COLOR: SEE CHART
 - MWID = MAXIMUM WIRE INSULATION DIAMETER
 - PARTS ARE ROHS COMPLIANT.

SALES DRAWING

DWG UPDATED EC NO: WNA2011-0481 DRWNG: GROJAS01 2013/03/21 CHKD: JMAGNEIL 2013/04/19 APPR: JMAGNEIL 2013/05/01 F3	QUALITY SYMBOLS ▽=0 ▽=0	GENERAL TOLERANCES (UNLESS SPECIFIED) mm INCH 4 PLACES ± --- ± --- 3 PLACES ± --- ± --- 2 PLACES ± --- ± --- 1 PLACE ± --- ± --- ANGULAR ± ---°	DIMENSION STYLE IN/MM	SCALE ---	DESIGN UNITS INCH	THIRD ANGLE PROJECTION
		DRAWN BY DATE BRE 02/03/20	TITLE INSULKRIMP FEMALE FIQD STANDARD FLARE			
		CHECKED BY DATE HEB 02/03/20	MOLEX MOLEX INCORPORATED			
		APPROVED BY DATE RWD 02/03/20	MATERIAL NO. SEE CHART DOCUMENT NO. SD-19003-005 SHEET NO. 1 OF 1			
DRAFT WHERE APPLICABLE MUST REMAIN WITHIN DIMENSIONS		THIS DRAWING CONTAINS INFORMATION THAT IS PROPRIETARY TO MOLEX INCORPORATED AND SHOULD NOT BE USED WITHOUT WRITTEN PERMISSION				