

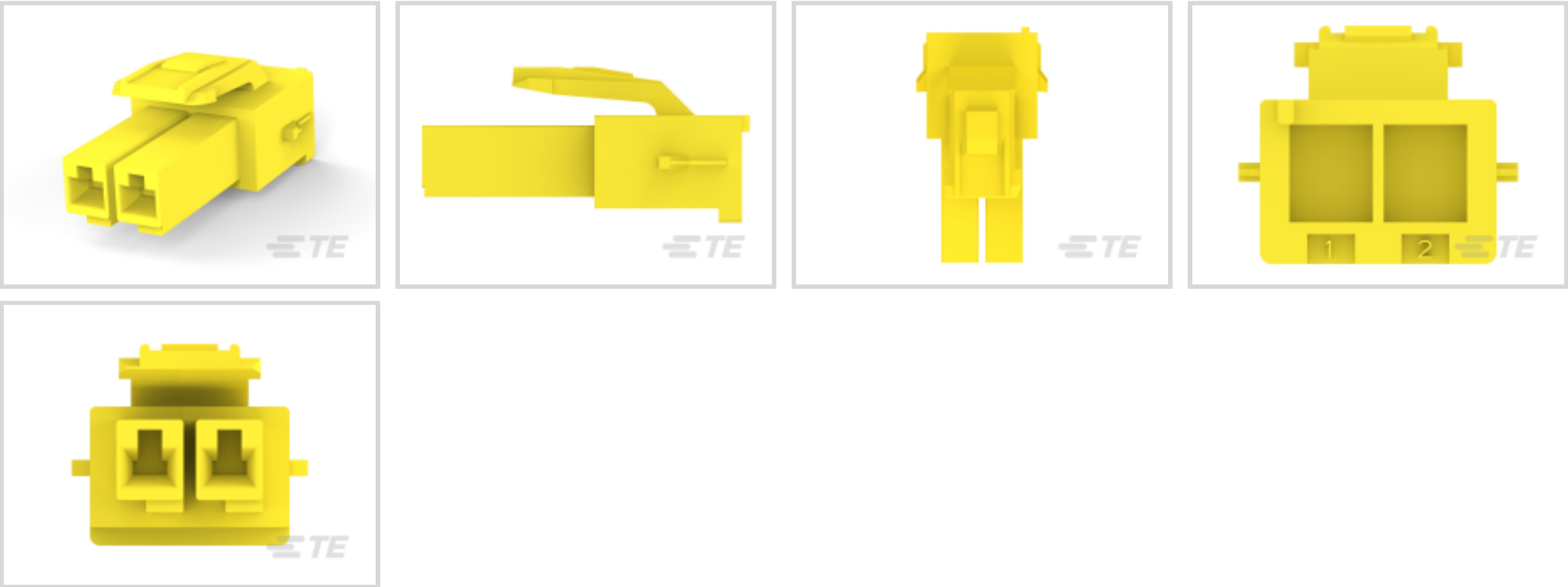


Power Double Lock

TE Internal #: 177898-4
Rectangular Power Connectors, Housing, Plug, Wire-to-Board /
Wire-to-Panel / Wire-to-Wire, 2 Position, .156 in [3.96 mm]
Centerline, Power Double Lock

[View on TE.com >](#)

Connectors > Power Connectors > Rectangular Power > Rectangular Power Connectors > STD Temp Power Double Lock Plug



Rectangular Power Connector Type: **Housing**

Connector & Housing Type: **Plug**

Connector System: **Wire-to-Board, Wire-to-Panel, Wire-to-Wire**

Number of Positions: **2**

Centerline (Pitch): **3.96 mm [.156 in]**

[All STD Temp Power Double Lock Plug \(68\)](#)

Features

Product Type Features

Rectangular Power Connector Type	Housing
Connector & Housing Type	Plug
Connector System	Wire-to-Board, Wire-to-Panel, Wire-to-Wire
Sealable	No
Connector & Contact Terminates To	Wire & Cable

Configuration Features

Number of Positions	2
Number of Rows	1

Electrical Characteristics

Operating Voltage	300 VAC
-------------------	---------

Contact Features

Contact Layout	Inline
----------------	--------



Contact Retention Within Housing	Without
Contact Type	Receptacle

Termination Features

Termination Method to Wire & Cable	Crimp
Wire/Cable Type	Discrete Wire
Wire Type	Stranded

Mechanical Attachment

Connector Mounting Type	Cable Mount (Free-Hanging)
-------------------------	----------------------------

Housing Features

Centerline (Pitch)	3.96 mm[.156 in]
Housing Color	Yellow
Housing Material	Nylon 6/6

Usage Conditions

Operating Temperature Range	-30 – 105 °C[-22 – 221 °F]
-----------------------------	----------------------------

Operation/Application

Circuit Application	Power & Signal
---------------------	----------------

Industry Standards

UL Flammability Rating	UL 94V-0
Glow Wire Rating	Standard Part - Not Glow Wire
Agency/Standard Number	C22.2 No. 182.3, UL 1977
Agency/Standard	CNR, USR

Packaging Features

Packaging Method	Bag
Packaging Quantity	500

Other

For Use With	Cap: 177906, Contacts: 177914 or 177915, Double Lock Plate 177918-1, Header: 179838
--------------	---

Product Compliance

For compliance documentation, visit the product page on [TE.com](#)>

EU RoHS Directive 2011/65/EU	Compliant
------------------------------	-----------



EU ELV Directive 2000/53/EC	Compliant
China RoHS 2 Directive MIIT Order No 32, 2016	No Restricted Materials Above Threshold
EU REACH Regulation (EC) No. 1907/2006	Current ECHA Candidate List: JUNE 2022 (224) Candidate List Declared Against: JAN 2022 (223) SVHC > Threshold: Not Yet Reviewed
Halogen Content	Low Halogen - Br, Cl, F, I < 900 ppm per homogenous material. Also BFR/CFR/PVC Free
Solder Process Capability	Not applicable for solder process capability

Product Compliance Disclaimer

This information is provided based on reasonable inquiry of our suppliers and represents our current actual knowledge based on the information they provided. This information is subject to change. The part numbers that TE has identified as EU RoHS compliant have a maximum concentration of 0.1% by weight in homogenous materials for lead, hexavalent chromium, mercury, PBB, PBDE, DBP, BBP, DEHP, DIBP, and 0.01% for cadmium, or qualify for an exemption to these limits as defined in the Annexes of Directive 2011/65/EU (RoHS2). Finished electrical and electronic equipment products will be CE marked as required by Directive 2011/65/EU. Components may not be CE marked. Additionally, the part numbers that TE has identified as EU ELV compliant have a maximum concentration of 0.1% by weight in homogenous materials for lead, hexavalent chromium, and mercury, and 0.01% for cadmium, or qualify for an exemption to these limits as defined in the Annexes of Directive 2000/53/EC (ELV). Regarding the REACH Regulation, the information TE provides on SVHC in articles for this part number is based on the latest European Chemicals Agency (ECHA) 'Guidance on requirements for substances in articles' posted at this URL: <https://echa.europa.eu/guidance-documents/guidance-on-reach>

Compatible Parts

 <p>TE Part # CAT-P87024-R2435 Power Double Lock Receptacle</p>	 <p>TE Part # 179593-1 AMP POWER D/LOCK RECCONT. L/P</p>	 <p>TE Part # 179592-2 POWER D/LOCK REC CONT. H/P L/P</p>	 <p>TE Part # 177906-4 POWER DBL LOCK CAP HSG P/M 2P</p>
 <p>TE Part # 179463-4 AMP POWER DBL LOCK HSG 2P</p>	 <p>TE Part # 179592-1 AMP POWER D/LOCK REC CONT. L/P</p>	 <p>TE Part # 179593-2 POWER D/LOCK REC CONT. H/P L/P</p>	

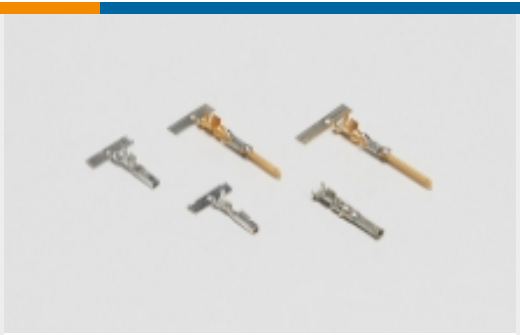
Also in the Series | Power Double Lock



Connector Contacts(1)



Insertion & Extraction Tools(2)



Power Contacts(23)

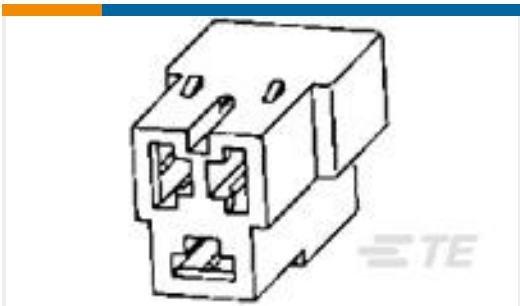


Rectangular Connector Locking(14)

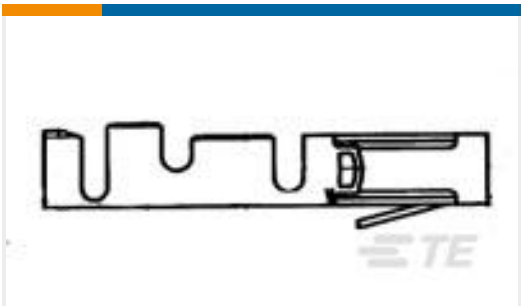


Rectangular Power Connectors(284)

Customers Also Bought



TE Part #180941
FF 250 REC HSG 3P NYLON NAT



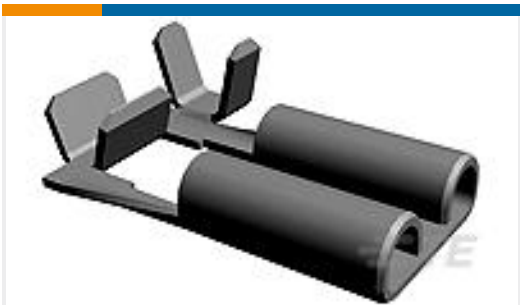
TE Part #280530-1
MOD II COSI RECP CONT STR PH-B



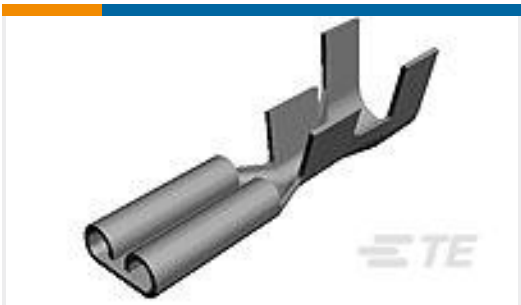
TE Part #172520-4
LOW PRO MINI AMP-IN HDR 4P



TE Part #170037-2
187 FASTON,REC.,20-16 AWG,TPBR



TE Part #1742087-2
187 FASTON,FLAG,REC.,18-22 AWG, TPBR



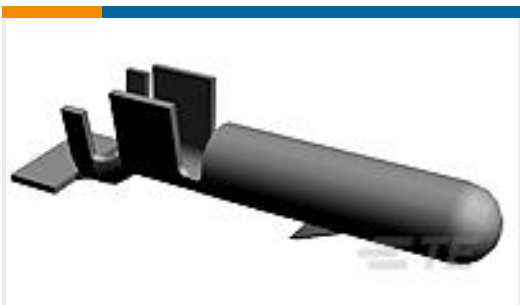
TE Part #170213-2
250 FASTON,REC.,18-14 AWG,TPBR



TE Part #794280-1
12P UMNL WIRE SEAL



TE Part #794758-1
MINI UMNL WIRE SEAL,18-26AWG



TE Part #61234-1
.156 MNL PIN 12-10 PTPBR



TE Part #1-172170-2
12 POS TR MINI UNIV

Documents



Product Drawings

POWER DBL LOCK PLUG HSG 2P

English

CAD Files

3D PDF

3D

Customer View Model

ENG_CVM_CVM_177898-4_S.2d_dxf.zip

English

Customer View Model

ENG_CVM_CVM_177898-4_S.3d_igs.zip

English

Customer View Model

ENG_CVM_CVM_177898-4_S.3d_stp.zip

English

By downloading the CAD file I accept and agree to the [Terms and Conditions](#) of use.

Datasheets & Catalog Pages

SOFT_SHELL_PIN_AND_SOCKET_CONNECTORS_CATALOG

English

Product Specifications

Product Specification

English

Product Environmental Compliance

TE Material Declaration

English

Instruction Sheets

Instruction Sheet (non U.S.)

English

AMP POWER DOUBLELOCK CONNECTOR SERIES

English

Agency Approvals

UL Report

English

UL Report

English