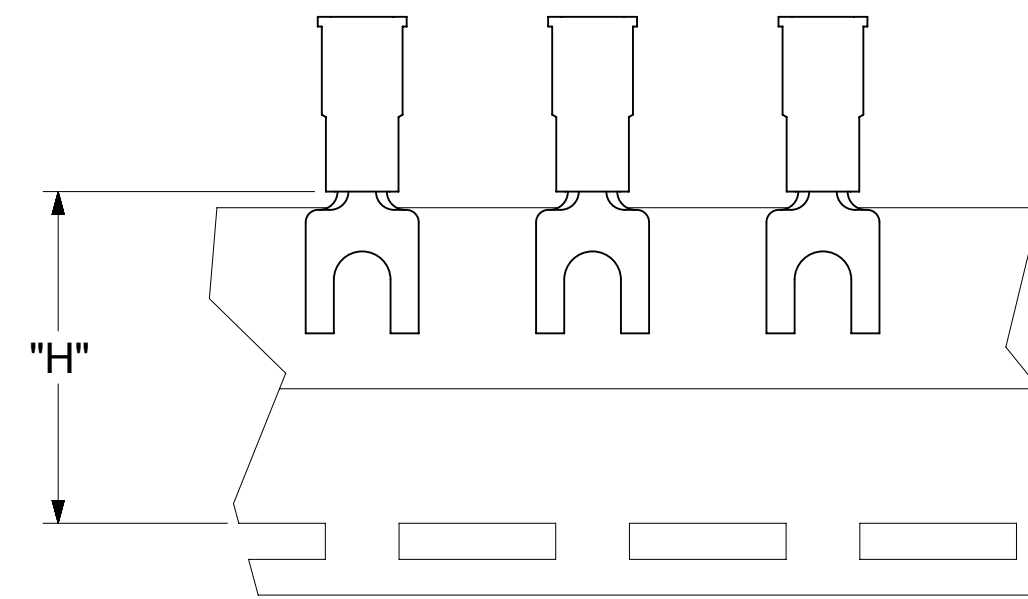
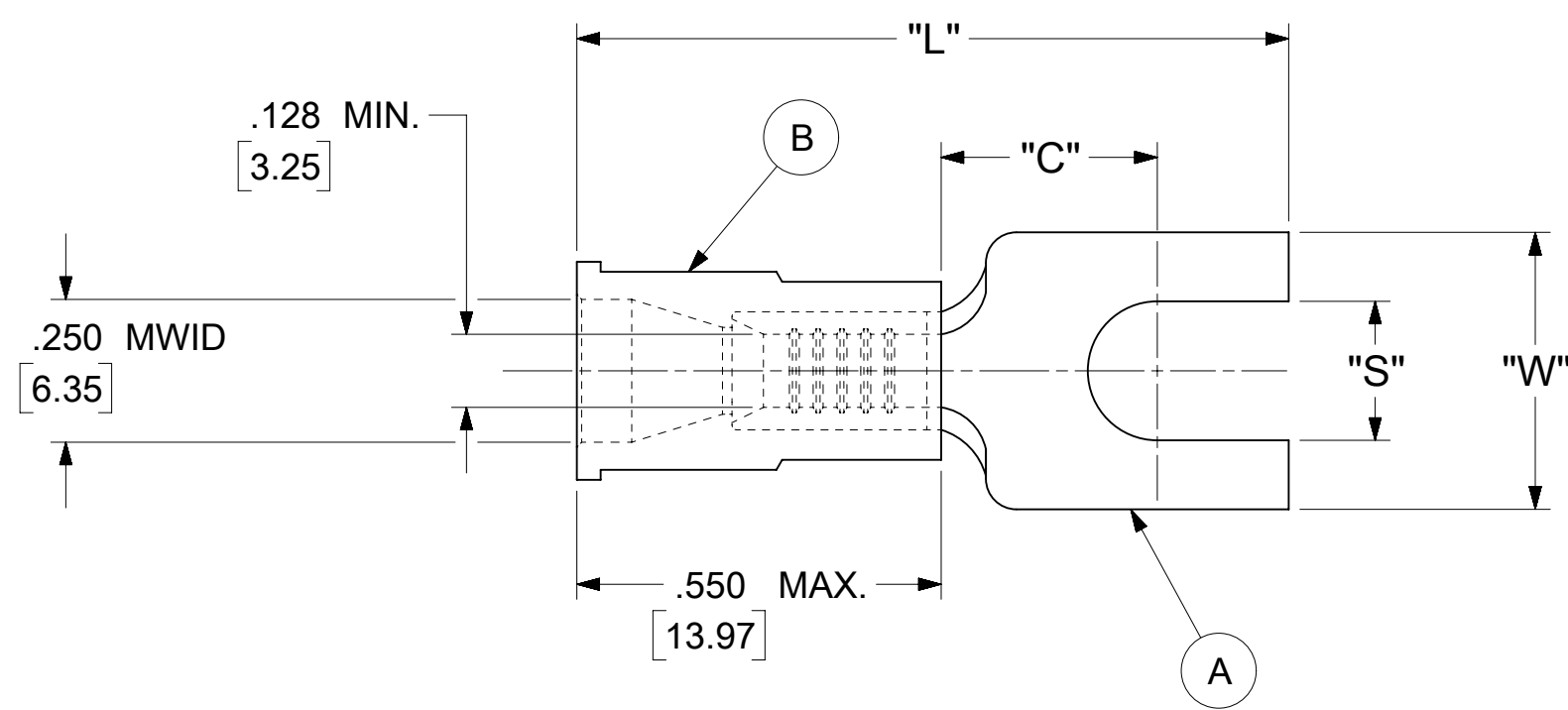


LOOSE PIECE		TAPE MOUNTED		SPECIFICATIONS						
MATERIAL NUMBER	ENGINEERING NUMBER	MATERIAL NUMBER	ENGINEERING NUMBER	STUD SIZE	"S" ±.005 [0.13]	"W" ±.010 [0.25]	"C" MIN.	"L" MAX.	"H"	STOCK ±.001[0.25] THICKNESS
191310006	C-2105-06X	191310005	C-2105-06XT	6	.146 [3.71]	.320 [8.13]	.305 [7.75]	1.075 [27.31]	.980 [24.89]	.040 [1.02]
191310004	C-2105-08X	191310003	C-2105-08XT	8	.173 [4.39]					
191310002	C-2105-10X	191310059	C-2105-10XT	10	.198 [5.03]					



PARTS ON TAPE

NOTES:

- MATERIAL:
 - (A). SPADE TONGUE TERMINAL: COPPER
 - PLATING: ELECTRO-TIN (.0003 MIN.)
 - (B). INSULATION: MOLDED PVC (YELLOW)
- MWID: MAXIMUM WIRE INSULATION DIAMETER
4.0 -6.0 MM²
- WIRE SIZE: 12 -10 AWG
- ALL DIMENSIONS IN INCHES/[MM].
- PARTS ARE ROHS COMPLIANT.
- DIMS. SHOWN ARE FOR REFERENCE ONLY.

THIS DRAWING CONTAINS INFORMATION THAT IS PROPRIETARY TO MOLEX ELECTRONIC TECHNOLOGIES, LLC AND SHOULD NOT BE USED WITHOUT WRITTEN PERMISSION									
SYMBOLS	DIMENSION UNITS	SCALE	CURRENT REV DESC: MIGRATION TO ECTR/NX						
∇ = 0	INCH/MM	NTS	EC NO: 620815 DRWN: ABENJAMINLW 2019/07/01 CHK'D: GROJAS01 2019/07/18 APPR: JMACNEIL 2019/08/05 INITIAL REVISION: DRWN: JJ 1984/10/31 APPR: JMACNEIL 2019/08/05						
∇ = 0	GENERAL TOLERANCES (UNLESS SPECIFIED)								
∇ = 0	MM	INCH							
∇ = 0	4 PLACES ± --- ± ---	3 PLACES ± --- ± .005							
∇ = 0	2 PLACES ± 0.13 ± .01	1 PLACE ± 0.25 ± ---	PRODUCT CUSTOMER DRAWING DOCUMENT NUMBER: 191310010 DOC TYPE: PSD DOC PART: 000 REVISION: A						
∇ = 0	0 PLACES ± --- ± ---	ANGULAR TOL ± 0.5°	THIRD ANGLE PROJECTION	DRAWING	SERIES	MATERIAL NUMBER	CUSTOMER	SHEET NUMBER	
∇ = 0	DRAFT WHERE APPLICABLE MUST REMAIN WITHIN DIMENSIONS			C-SIZE	19131	SEE TABLE	GENERAL MARKET	1 OF 1	