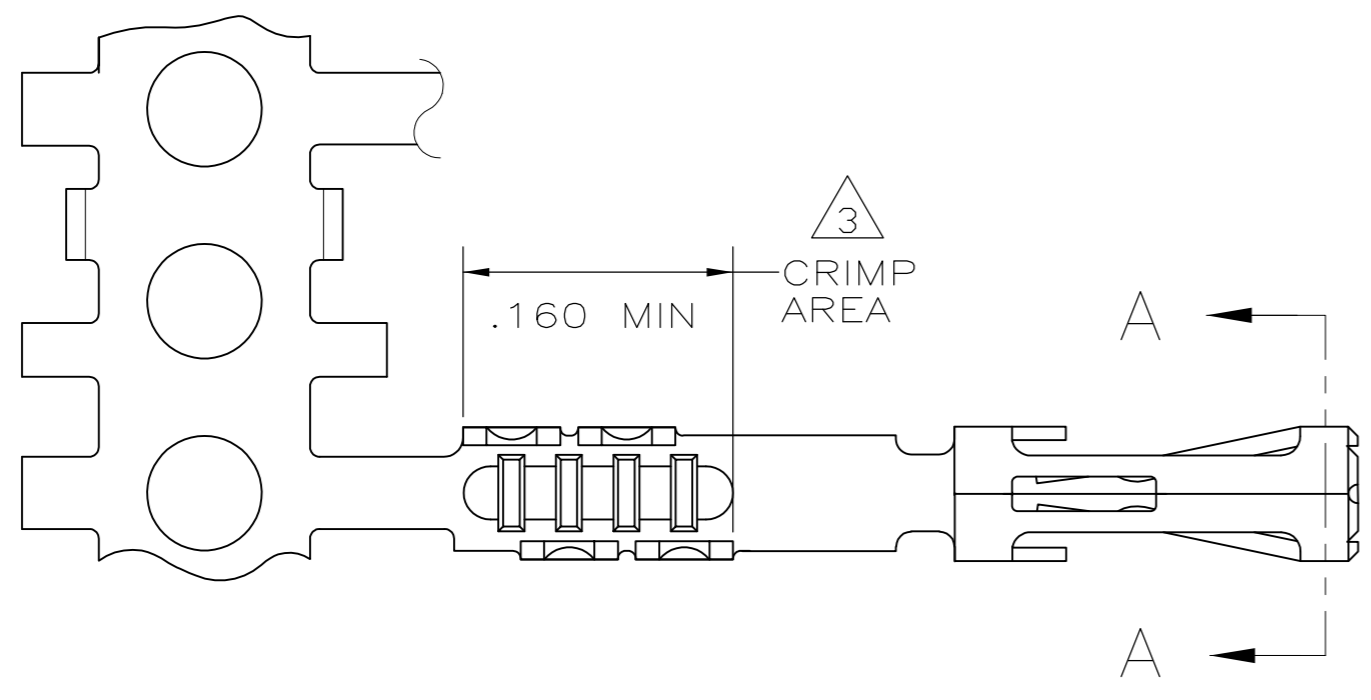


THIS DRAWING IS UNPUBLISHED. RELEASED FOR PUBLICATION  
 © COPYRIGHT BY TYCO ELECTRONICS CORPORATION. ALL RIGHTS RESERVED.

LOC	DIST	REVISIONS					
GP	00	P	LTR	DESCRIPTION	DATE	DWN	APVD
		A1		REVISED PER ECO-09-024927	07NOV09	KK	AEG
		A2		REVISED PER ECO-12-011709	26JUN12	RW	SY



1 .000100 MIN THK BRIGHT TIN/LEAD OVER  
 .000050 MIN THK NICKEL OVER ENTIRE CONTACT.

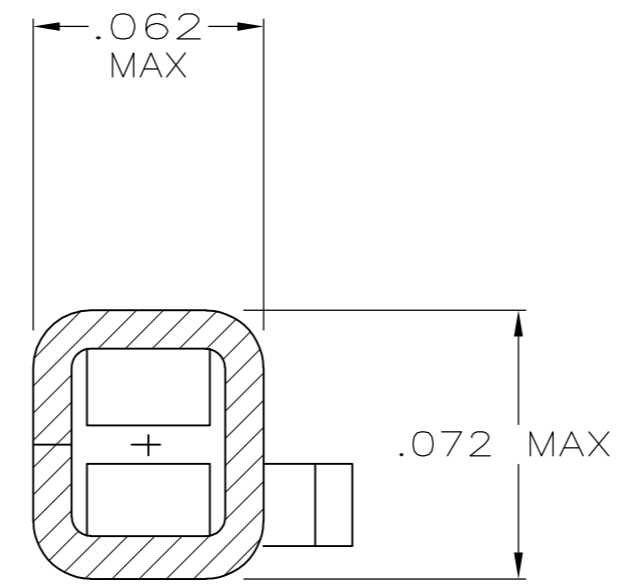
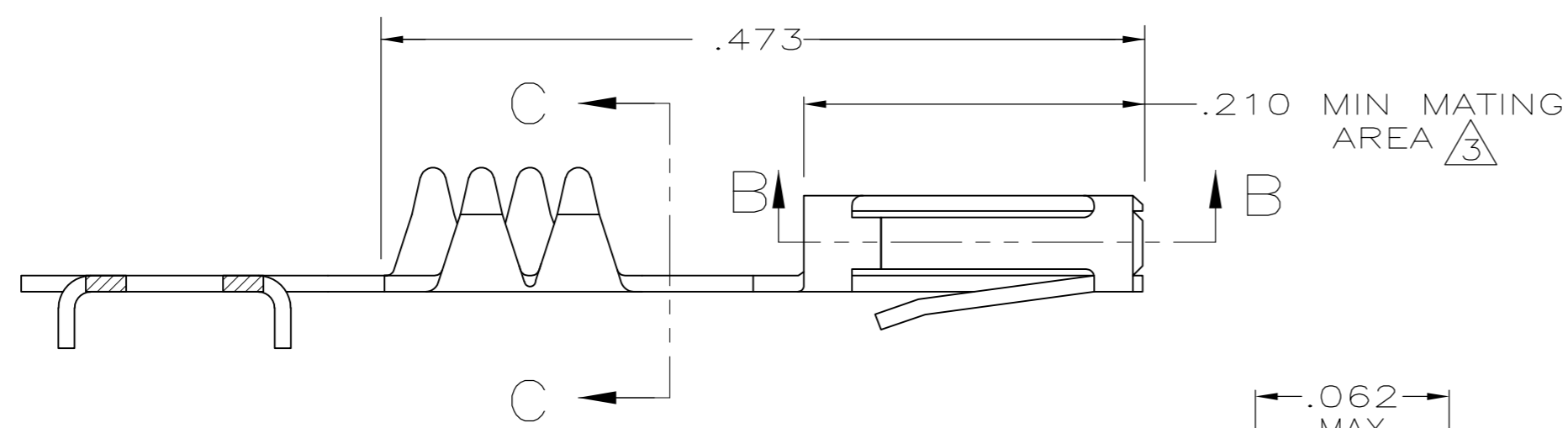
2. MATING POST LENGTH ACCEPTED:  
 SINGLE ROW HOUSINGS .210-.323  
 DOUBLE ROW HOUSINGS .225-.323

3 GOLD FLASH IN CRIMP AREA,  
 .000100 MIN TIN ON THE MATING AREA, BOTH OVER  
 .000050 MIN THK NICKEL ON ENTIRE CONTACT.

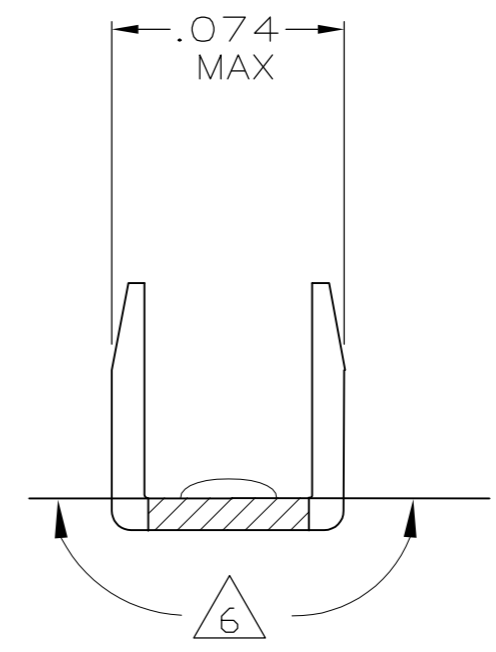
4. PARTS ARE NOT COATED WITH ANTI-FRETTING LUBE. THERE IS A DISTINCT POSSIBILITY OF FRETTING CORROSION. THESE PARTS ARE NOT RECOMMENDED FOR USE WHERE FRETTING CORROSION IS A POSSIBILITY.

5 OBSOLETE PARTS: OBSOLETE CIS STREAMLINING PER D.RENAUD/D.SINISI

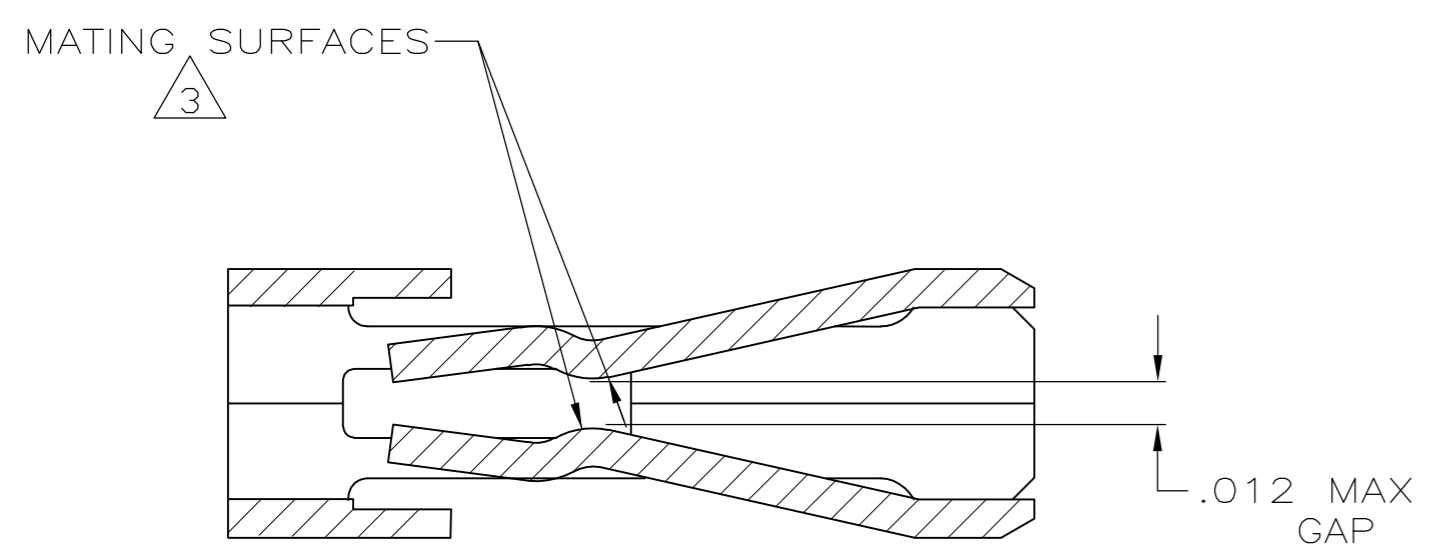
6 GOLD PLATING MAY OR MAY NOT BE PRESENT ON BOTTOM OF THE CRIMP BARREL IN THIS AREA



SECTION A-A  
 SCALE 20:1



SECTION C-C  
 SCALE 20:1



SECTION B-B  
 SCALE 20:1

5 OBSOLETE	3	1761852-2
	1	1761852-1
FINISH		PART NO

THIS DRAWING IS A CONTROLLED DOCUMENT.		DWN S.WAITMAN 18APR05	Tyco Electronics Corporation Harrisburg, PA 17105-3608	
DIMENSIONS: INCHES		CHK J.GERACE 18APR05	NAME RECEPTACLE CONTACT, HIGH PRESSURE	
TOLERANCES UNLESS OTHERWISE SPECIFIED:		APVD M.WALMSLEY 18APR05	PRODUCT SPEC 108-9024	
0 PLC ± -		APPLICATION SPEC 114-16015		
1 PLC ± -		SIZE A2 CAGE CODE 00779 C=1761852		
2 PLC ± -		DRAWING NO 1761852		
3 PLC ± .005		RESTRICTED TO -		
4 PLC ± -		SCALE 10:1 SHEET 1 of 1		
ANGLES ± -		REV A2		
FINISH SEE TABLE		CUSTOMER DRAWING		