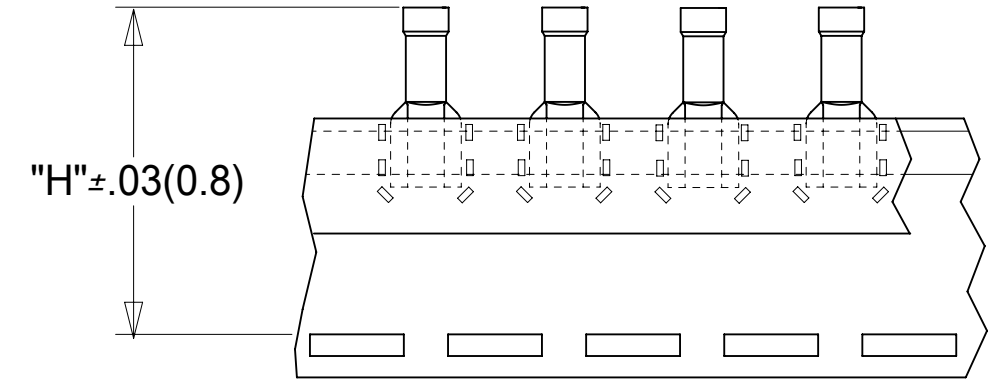
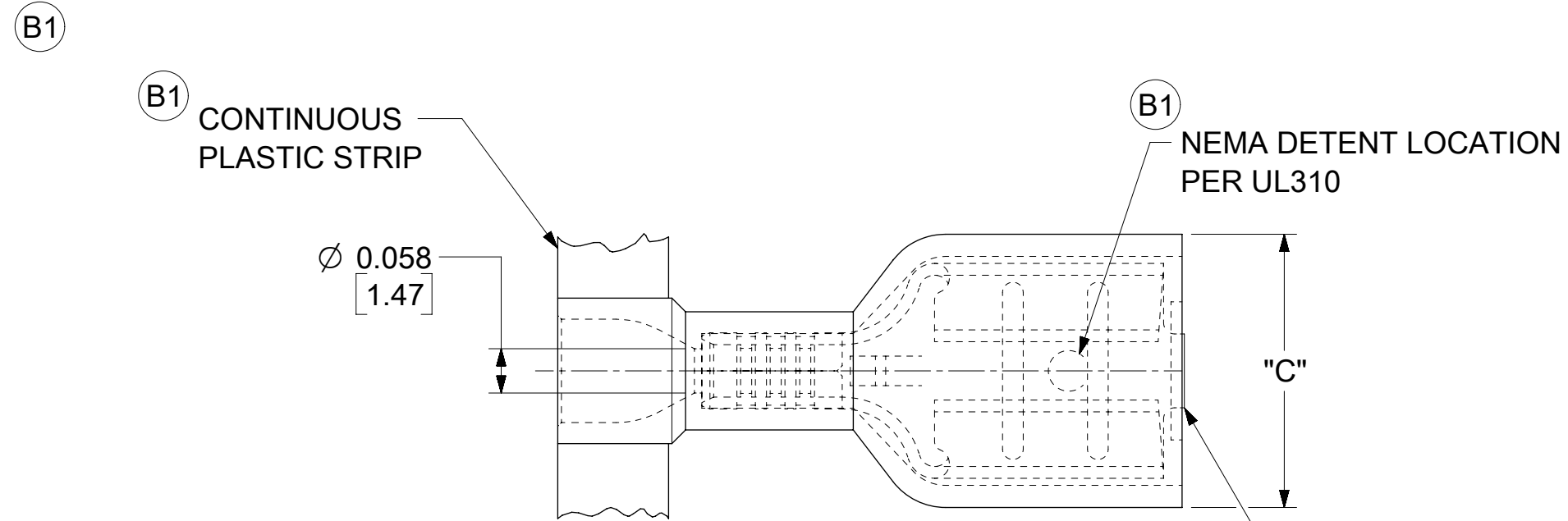
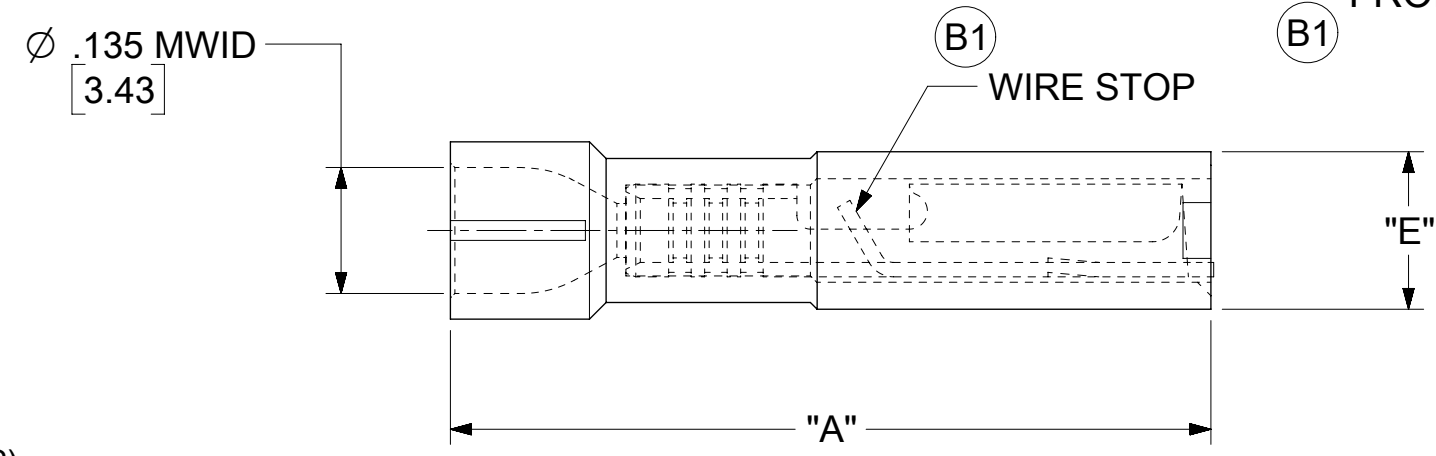


10	9	8	7	6	5	4	3	2	1	
LOOSE PIECE MAT'L NO.	LOOSE PIECE ENGRNG NO.	CONTINUOUS STRIP MAT'L NO.	CONTINUOUS STRIP ENGRNG NO.	TAPE MAT'L NO.	TAPE ENGRNG NO.	FITS MALE TAB SIZE	"A" MAX	"C" MAX	"E" MAX	"H" NOMINAL
190030126	AA-2202V	190030128	AA-2202VC	190030127	AA-2202VT	.187 X .020	.78 (19.8)	.316 (8.03)	.160 (4.06)	1.38 (35.1)
190030129	AA-2203V	190030131	AA-2203VC	190030130	AA-2203VT	.187 X .032	.78 (19.8)	.316 (8.03)	.160 (4.06)	1.38 (35.1)
190030005	AA-2201VN	190030111	AA-2201VNC	190030007	AA-2201VNT	.250 X .032	.86 (21.8)	.380 (9.65)	.180 (4.57)	1.42 (35.6)



PARTS ON TAPE



- B1** NOTE(S):
- MATERIAL:
 TERMINAL: BRASS .016/ 0.41
 PLATING: ELECTRO-TIN
 INSULATION: NYLON 6/6 94V-0 RATING
 COLOR: RED
 - MWID = MAXIMUM WIRE INSULATION DIAMETER.
 - PRODUCT SPECIFICATION: PS-19902-008
 - PARTS ARE RoHS COMPLIANT.

THIS DRAWING CONTAINS INFORMATION THAT IS PROPRIETARY TO MOLEX ELECTRONIC TECHNOLOGIES, LLC AND SHOULD NOT BE USED WITHOUT WRITTEN PERMISSION									
SYMBOLS		DIMENSION UNITS		SCALE		CURRENT REV DESC: ADD TERM CUTOFF NOTE			
▽ = 0	IN/MM	NTS		EC NO: 607062 DRWN: DMYRICK 2018/11/01 CHK'D: JMACNEIL 2018/11/02 APPR: JMACNEIL 2018/11/02 INITIAL REVISION: DRWN: HBEITZEL 2001/06/11 APPR: RDEROSS 2001/06/11					
▽ = 0	GENERAL TOLERANCES (UNLESS SPECIFIED)								
▽ = 0		MM	INCH						
▽ = 0	4 PLACES	±	±						
▽ = 0	3 PLACES	±	± 0.005						
▽ = 0	2 PLACES	± 0.13	± 0.01						
▽ = 0	1 PLACE	± 0.25	±						
▽ = 0	0 PLACES	±	±						
▽ = 0	ANGULAR TOL ± °			DOCUMENT NUMBER: SD-19003-001 DOC TYPE: PSD DOC PART: 001 REVISION: B1					
▽ = 0	DRAFT WHERE APPLICABLE MUST REMAIN WITHIN DIMENSIONS			THIRD ANGLE PROJECTION		DRAWING		SHEET NUMBER	
		B-SIZE		SERIES		MATERIAL NUMBER		CUSTOMER	
		19003		SEE CHART		GENERAL MARKET		1 OF 1	