

1775862-2 ✓ ACTIVE



### Mini PCI Express

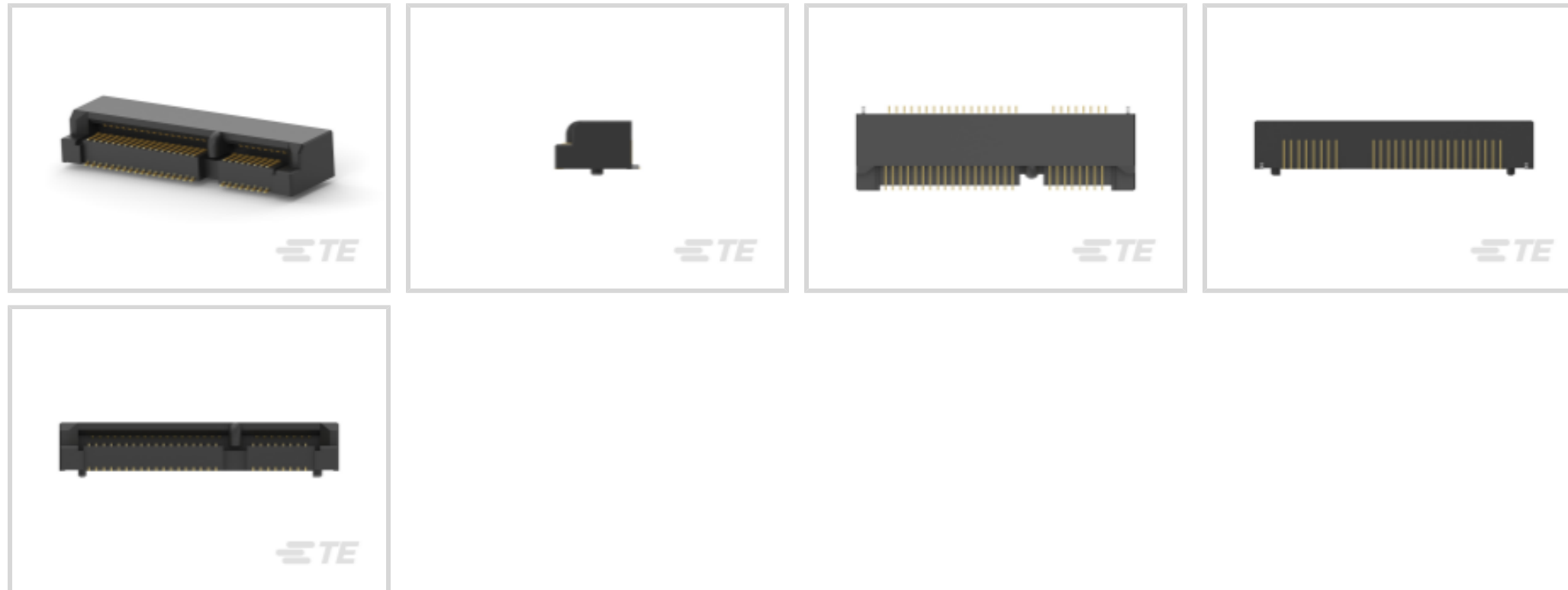
TE Internal #: 1775862-2

Mini PCI Express & mSATA, Board-to-Board, 52 Position, .031 in [.8 mm] Centerline, Stack Height 5.2 mm [.205 in], Gold Flash, Matte,

Mini PCI Express

[View on TE.com >](#)

Connectors > PCB Connectors > Card Edge Connectors > Mini PCI Express & mSATA



Bus Type: **Mini PCI Express**

Connector System: **Board-to-Board**

Number of Positions: **52**

Centerline (Pitch): **.8 mm [.031 in ]**

Stack Height: **5.2 mm [.205 in ]**

## Features

### Product Type Features

Connector System	Board-to-Board
Sealable	No
Connector & Contact Terminates To	Printed Circuit Board

### Configuration Features

Number of Keys	1
Number of Rows	2
Stackable	No
PCB Mount Orientation	Horizontal
Number of Positions	52

### Body Features

Ejector Location	None
------------------	------

### Contact Features

Contact Underplating Material	Nickel
PCB Contact Termination Area Plating Material	Gold Flash



Contact Base Material	Copper Alloy
Contact Mating Area Plating Material	Gold Flash
PCB Contact Termination Area Plating Material Finish	Matte
Contact Current Rating (Max)	.5 A

### Termination Features

Insertion Style	Cam-In
Termination Method to Printed Circuit Board	Surface Mount

### Mechanical Attachment

Mating Alignment Type	Polarization
PCB Mount Retention	Without

### Housing Features

Housing Material	Thermoplastic
Housing Color	Black
Centerline (Pitch)	.8 mm[.031 in]

### Dimensions

	.205 in
Row-to-Row Spacing	.8 mm[.031 in]
Stack Height	5.2 mm[.205 in]

### Usage Conditions

Operating Temperature Range	-55 – 85 °C[-67 – 185 °F]
-----------------------------	---------------------------

### Operation/Application

Circuit Application	Signal
---------------------	--------

### Industry Standards

UL Flammability Rating	UL 94V-0
Bus Type	Mini PCI Express

### Packaging Features

Packaging Quantity	550
Packaging Method	Tape & Reel

### Product Compliance

[For compliance documentation, visit the product page on TE.com>](#)



EU RoHS Directive 2011/65/EU	Compliant
EU ELV Directive 2000/53/EC	Compliant
China RoHS 2 Directive MIIT Order No 32, 2016	No Restricted Materials Above Threshold
EU REACH Regulation (EC) No. 1907/2006	Current ECHA Candidate List: JUNE 2022 (224) Candidate List Declared Against: JUNE 2022 (224) Does not contain REACH SVHC
Halogen Content	Low Halogen - Br, Cl, F, I < 900 ppm per homogenous material. Also BFR/CFR/PVC Free
Solder Process Capability	Reflow solder capable to 260°C

Product Compliance Disclaimer

This information is provided based on reasonable inquiry of our suppliers and represents our current actual knowledge based on the information they provided. This information is subject to change. The part numbers that TE has identified as EU RoHS compliant have a maximum concentration of 0.1% by weight in homogenous materials for lead, hexavalent chromium, mercury, PBB, PBDE, DBP, BBP, DEHP, DIBP, and 0.01% for cadmium, or qualify for an exemption to these limits as defined in the Annexes of Directive 2011/65/EU (RoHS2). Finished electrical and electronic equipment products will be CE marked as required by Directive 2011/65/EU. Components may not be CE marked. Additionally, the part numbers that TE has identified as EU ELV compliant have a maximum concentration of 0.1% by weight in homogenous materials for lead, hexavalent chromium, and mercury, and 0.01% for cadmium, or qualify for an exemption to these limits as defined in the Annexes of Directive 2000/53/EC (ELV). Regarding the REACH Regulation, the information TE provides on SVHC in articles for this part number is based on the latest European Chemicals Agency (ECHA) 'Guidance on requirements for substances in articles' posted at this URL: <https://echa.europa.eu/guidance-documents/guidance-on-reach>

## Compatible Parts



Also in the Series | [Mini PCI Express](#)

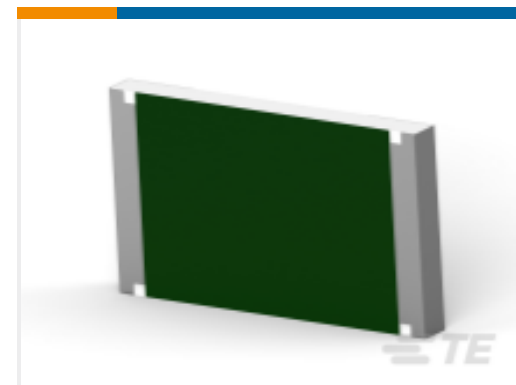
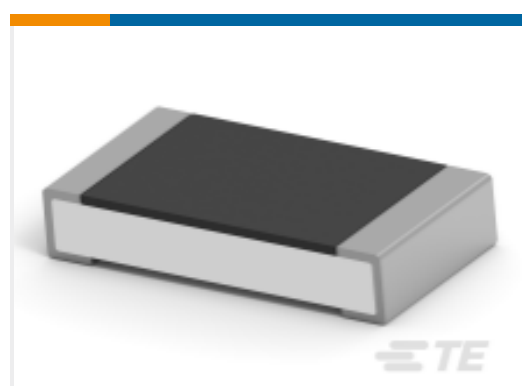


Mini PCI Express &amp; mSATA(6)



RJ25 Connectors(1)

## Customers Also Bought

TE Part #1-776262-4  
14 POS AMPSEAL VERTICAL HDRTE Part #1-2176052-9  
RLP73N 1J R30 5% 5K RLTE Part #1735284-4  
SATA BACKPLANE RECEPTACLE,  
VERTICAL, SMTTE Part #2-2176408-2  
3560 15K 5%TE Part #3-2176390-7  
RQ 1206 2K74 0.1% 10PPM 5K RLTE Part #1-1879234-6  
SMF5 2K2 5%TE Part #9-2176389-4  
RQ 1206 1K0 0.1% 10PPM 5K RL

## Documents

### Product Drawings

mSATA/mini PCI-E 5.2H Type I G/F

English

### CAD Files

3D PDF

3D

Customer View Model

[ENG\\_CVM\\_CVM\\_1775862-2\\_H.2d\\_dxf.zip](#)

English

Customer View Model

[ENG\\_CVM\\_CVM\\_1775862-2\\_H.3d\\_igs.zip](#)

English

Customer View Model

[ENG\\_CVM\\_CVM\\_1775862-2\\_H.3d\\_stp.zip](#)

English

By downloading the CAD file I accept and agree to the [Terms and Conditions](#) of use.



---

### Datasheets & Catalog Pages

[8-1773459-7\\_EXPRESS\\_MINI\\_CARD\\_AND\\_DISPLAY\\_MINI\\_CARD\\_SOCKETS\\_ORG](#)

English

---

### Product Specifications

[Product Specification](#)

English

---

### Product Environmental Compliance

[Product Compliance](#)

English

[Product Compliance](#)

English