

1745010-1 ✓ ACTIVE

AMP | MQS

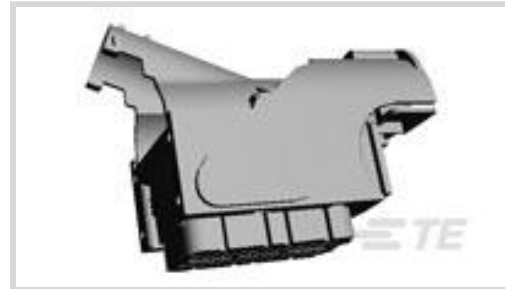
TE Internal #: 1745010-1

Housing for Female Terminals, Wire-to-Wire, 60 Position, .1 in [2.54 mm] Centerline, Sealable, Black, Signal, Cable Mount (Free-Hanging), MQS

[View on TE.com >](#)



Connectors > Automotive Connectors > Connector Housings > MQS, CONNECTOR HOUSING



Connector & Housing Type: **Housing for Female Terminals**

Mating Tab Width: **.63 mm [.025 in, .059 in]**

Connector System: **Wire-to-Wire**

Number of Positions: **60**

Centerline (Pitch): **2.54 mm [.1 in]**

[All MQS, CONNECTOR HOUSING \(557\)](#)

Features

Product Type Features

Connector & Housing Shape	Rectangular
Connector & Housing Type	Housing for Female Terminals
Connector System	Wire-to-Wire
Sealable	Yes
Hybrid Connector	Yes
Primary Locking Feature	On the Terminal

Configuration Features

Number of Positions	60
Number of Rows	1

Electrical Characteristics

Operating Voltage	24 VDC
Nominal Voltage Architecture	12 V, 24 V

Body Features

Cable Exit Angle	90°
Body Material	PA GF
Primary Product Color	Black



Contact Features

Contact Size	.63mm, 1.5mm, 2.8mm
Contact Type	Receptacle
Mating Tab Width	.63 mm[.025 in][.059 in]

Mechanical Attachment

Mounting Feature	Without
Terminal Position Assurance	No
Strain Relief	Without
Mating Alignment Type	Polarized
Mating Alignment	With
Connector Mounting Type	Cable Mount (Free-Hanging)

Housing Features

Centerline (Pitch)	2.54 mm[.1 in]
--------------------	----------------

Dimensions

Product Width	46 mm[1.811 in]
Product Length	94.3 mm[3.713 in]
Product Height	83.1 mm[3.272 in]
Row-to-Row Spacing	3 mm, 3.2 mm[.118 in][.126 in]

Operation/Application

Circuit Application	Signal
---------------------	--------

Packaging Features

Packaging Quantity	84
Packaging Method	Carton

Other

Serviceable	Yes
Connector Position Assurance Capable	No

Product Compliance

[For compliance documentation, visit the product page on TE.com>](#)

EU RoHS Directive 2011/65/EU	Compliant
EU ELV Directive 2000/53/EC	Compliant
China RoHS 2 Directive MIIT Order No 32, 2016	No Restricted Materials Above Threshold



EU REACH Regulation (EC) No. 1907/2006

Current ECHA Candidate List: JUNE 2022 (224)

Candidate List Declared Against: JAN 2022 (223)

SVHC > Threshold:
Not Yet Reviewed

Halogen Content

BFR/CFR/PVC Free, but Br/Cl >900 ppm in other sources.

Solder Process Capability

Not applicable for solder process capability

Product Compliance Disclaimer

This information is provided based on reasonable inquiry of our suppliers and represents our current actual knowledge based on the information they provided. This information is subject to change. The part numbers that TE has identified as EU RoHS compliant have a maximum concentration of 0.1% by weight in homogenous materials for lead, hexavalent chromium, mercury, PBB, PBDE, DBP, BBP, DEHP, DIBP, and 0.01% for cadmium, or qualify for an exemption to these limits as defined in the Annexes of Directive 2011/65/EU (RoHS2). Finished electrical and electronic equipment products will be CE marked as required by Directive 2011/65/EU. Components may not be CE marked. Additionally, the part numbers that TE has identified as EU ELV compliant have a maximum concentration of 0.1% by weight in homogenous materials for lead, hexavalent chromium, and mercury, and 0.01% for cadmium, or qualify for an exemption to these limits as defined in the Annexes of Directive 2000/53/EC (ELV). Regarding the REACH Regulation, the information TE provides on SVHC in articles for this part number is based on the latest European Chemicals Agency (ECHA) 'Guidance on requirements for substances in articles' posted at this URL: <https://echa.europa.eu/guidance-documents/guidance-on-reach>

Compatible Parts



TE Part # 1241608-1
MQS1,5 Sn rec CB unseal. 0,75-1,5



TE Part # 1394871-1
MQS DICHTSTOPFEN




TE Part # 1394872-1
SEALING PLUG 1,5MM




TE Part # 284583-1
CAVITY PLUG FOR 64 POS CONNECT

Also in the Series | MQS




Automotive Connector Caps & Covers (132)



Automotive Connector EMC Shielding (2)



Automotive Connector Locks & Position Assurance(29)



Automotive Housings(489)



Automotive Seals & Cavity Plugs(26)



Automotive Terminals(96)



Insertion & Extraction Tools(42)



Other Automotive Connector Accessories(13)

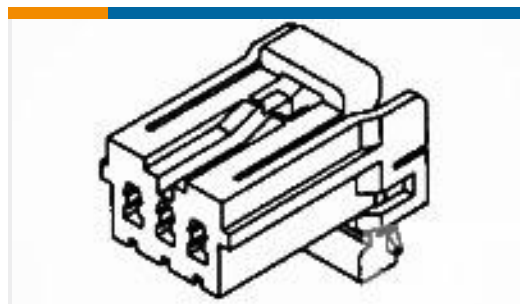


PCB Headers & Receptacles(207)

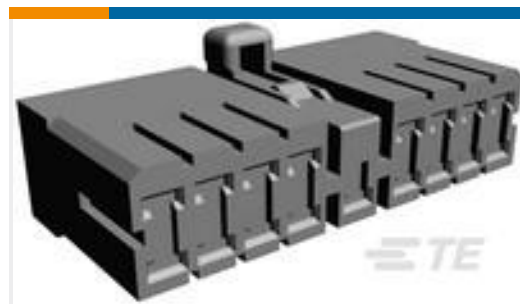
Customers Also Bought



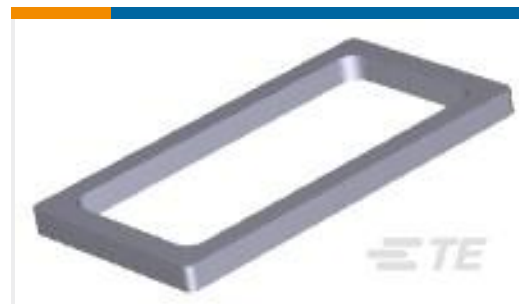
TE Part #1-1718624-1
2 POS HSG AMP MCP 2.8 ASSY



TE Part #1-174921-1
070 MLC W-W PLUG HSG 3P F/A



TE Part #172500-1
MIC MARK-2 PLUG HSG 17P



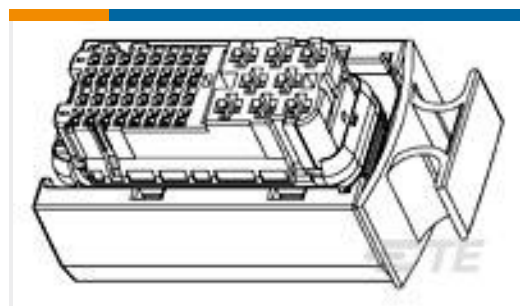
TE Part #1-794772-0
10P MINI UMNL SEAL,DIE CUT



TE Part #DT04-12PA-P016
REC, 12P, GRY, BUSBAR 1X12, GOLD, A



TE Part #776495-1
AMPSEAL 16 HOUSINGS



TE Part #368383-1
40P REC HSG ASSY(SIEMENS) BLK



TE Part #1438153-5
1X6 SEALED MARKET KEY B

Documents

Product Drawings

60POS MQS REC

English

CAD Files

3D PDF

English

Customer View Model

ENG_CVM_1745010-1_A2.2d_dxf.zip



English

Customer View Model

[ENG_CVM_1745010-1_A2.3d_igs.zip](#)

English

Customer View Model

[ENG_CVM_1745010-1_A2.3d_stp.zip](#)

English

By downloading the CAD file I accept and agree to the [Terms and Conditions](#) of use.

Datasheets & Catalog Pages

[Micro Quadlok Interconnection System \(MQS\)](#)

English

Product Specifications

[Application Specification](#)

German