



Non-Insulated Terminals Plugs & Receptacles

Please refer to Figure 1705

Part No.	Board Thick	Receptical Dia.	X
1705B	.062	.104	.105
1705C	.094	.104	.135
1705D	.125	.104	.165
Mates with USECO Part No. 1700 & 1710			

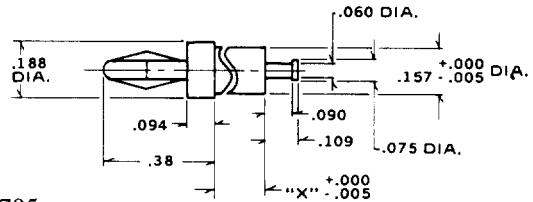


Fig. 1705

Please refer to Figure 1715

Part No.	Board Thick	Receptical Dia.	T
1715	N/A	.104	2-56
Mates with USECO Part No. 1700 & 1710			

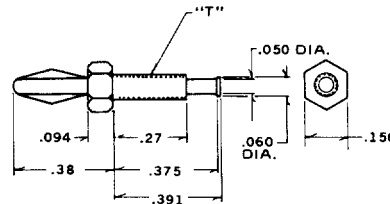


Fig. 1715

Please refer to Figure 1781

Part No.	Board Thick	Receptical Dia.	X
1781B	.062	.104	.094
1781C	.094	.104	.125
1781D	.125	.104	.156
Mates with USECO Part No. 1700 & 1710			

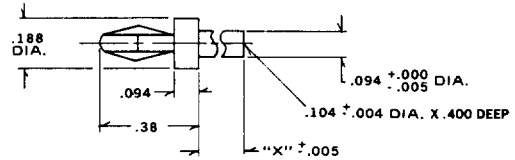


Fig. 1781

Please refer to Figure 1700

Part No.	Board Thick	X
1700C	.094	.125
1700D	.125	.165

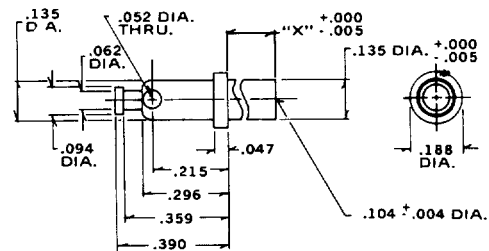


Fig. 1700

Please refer to Figure 1710

Part No.	Board Thick	X
1710C	.094	.135
1710D	.125	.165

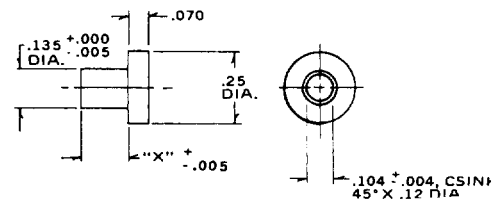


Fig. 1710

Please refer to Figure 2764

Part No.	Board Thick	Mounting Hole Dia. +.003 / -.001	D Nom	L Nom	Swage Tool
2764A	.031	.114	.112	.078	2764
2764B	.062	.114	.112	.109	2764
2764C	.094	.114	.112	.141	2764
2764D	.125	.114	.112	.122	2764

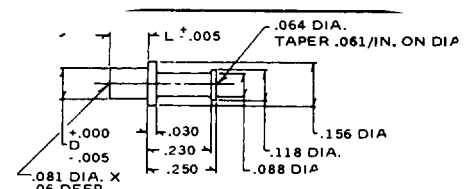


Fig. 2764

Standard Plating Suffix to Part Number 7000 Series Part Nos.

-7 (Au over Cu)

See Page 93 for all plating options.

Other Part Nos.

-1 (Ag over Cu)

TOLERANCE: .xxx ± .005, .xx ± .01 (ALL DIMS. BEFORE PLATING)