

1747996-1 ✓ ACTIVE



## GRACE INERTIA 12.4

TE Internal #: 1747996-1

Rectangular Power Connectors, Header, Receptacle, Wire-to-Board, 2 Position, .488 in [12.4 mm] Centerline, Printed Circuit Board, GRACE INERTIA 12.4

[View on TE.com >](#)

Connectors > Power Connectors > Rectangular Power > Rectangular Power Connectors



Rectangular Power Connector Type: **Header**

Connector & Housing Type: **Receptacle**

Connector System: **Wire-to-Board**

Number of Positions: **2**

Centerline (Pitch): **12.4 mm [ .488 in ]**

### Features

#### Product Type Features

|                                   |                       |
|-----------------------------------|-----------------------|
| Header Type                       | Fully Shrouded        |
| Rectangular Power Connector Type  | Header                |
| Connector & Housing Type          | Receptacle            |
| Connector System                  | Wire-to-Board         |
| Sealable                          | No                    |
| Connector & Contact Terminates To | Printed Circuit Board |

#### Configuration Features

|                            |          |
|----------------------------|----------|
| Number of Positions        | 2        |
| Keying                     | A        |
| PCB Mount Orientation      | Vertical |
| Number of Power Positions  | 2        |
| Number of Signal Positions | 0        |
| Number of Rows             | 1        |

#### Electrical Characteristics



|                   |         |
|-------------------|---------|
| Operating Voltage | 600 VDC |
|-------------------|---------|

### Contact Features

|  |   |
|--|---|
| Contact Layout                                 | Inline                                  |
| Contact Base Material                          | Copper Alloy                            |
| Contact Current Rating (Max)                   | 20 A                                    |
| Contact Retention Within Housing               | With                                    |
| Contact Type                                   | Tab                                     |
| PCB Contact Termination Area Plating Material  | Tin                                     |
| Contact Mating Area Plating Material           | Tin                                     |
| Contact Mating Area Plating Material Thickness | .8 $\mu\text{m}$ [31.5 $\mu\text{in}$ ] |
| Tab Width                                      | 3.1 mm[.122 in]                         |

### Termination Features

|   |                       |
|---|-----------------------|
| Termination Post & Tail Length              | 3.1 mm[.122 in]       |
| Termination Method to Printed Circuit Board | Through Hole - Solder |

### Mechanical Attachment

|                          |             |
|--------------------------|-------------|
| Strain Relief            | Without     |
| Mating Alignment Type    | Keyed       |
| Mating Alignment         | With        |
| PCB Mount Alignment      | Without     |
| Panel Mount Feature      | Without     |
| PCB Mount Retention      | With        |
| PCB Mount Retention Type | Boardlock   |
| Connector Mounting Type  | Board Mount |
| Mating Retention         | With        |
| Mating Retention Type    | Latch       |

### Housing Features

|                    |                  |
|--------------------|------------------|
| Centerline (Pitch) | 12.4 mm[.488 in] |
| Housing Color      | Natural          |
| Housing Material   | Nylon 6/6 GF     |

### Dimensions

|           |                  |
|-----------|------------------|
| Wire Size | 2427 – 7144 CMA  |
| Height    | 10.7 mm[.421 in] |



### Usage Conditions

|                             |                            |
|-----------------------------|----------------------------|
| Operating Temperature Range | -40 – 105 °C[-40 – 221 °F] |
|-----------------------------|----------------------------|

### Operation/Application

|                     |       |
|---------------------|-------|
| Circuit Application | Power |
|---------------------|-------|

### Industry Standards

|                        |                           |
|------------------------|---------------------------|
| UL Flammability Rating | UL 94V-0                  |
| Glow Wire Rating       | GWT 750°C (Without Flame) |

### Packaging Features

|                    |     |
|--------------------|-----|
| Packaging Method   | Bag |
| Packaging Quantity | 150 |

### Other

|              |              |
|--------------|--------------|
| For Use With | Plug Housing |
|--------------|--------------|

## Product Compliance

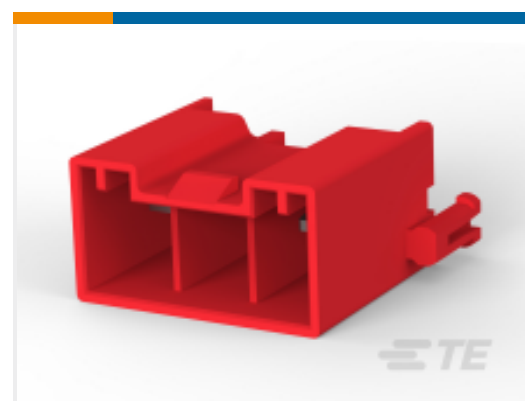
[For compliance documentation, visit the product page on TE.com>](#)

|   |  |
|---|--|
| EU RoHS Directive 2011/65/EU                  | Compliant  |
| EU ELV Directive 2000/53/EC                   | Compliant  |
| China RoHS 2 Directive MIIT Order No 32, 2016 | No Restricted Materials Above Threshold  |
| EU REACH Regulation (EC) No. 1907/2006        | Current ECHA Candidate List: JUNE 2022 (224)<br>Candidate List Declared Against: JAN 2022 (223)<br>SVHC > Threshold:<br>Not Yet Reviewed |
| Halogen Content                               | Not Low Halogen - contains Br or Cl > 900 ppm.   |
| Solder Process Capability                     | Wave solder capable to 265°C   |

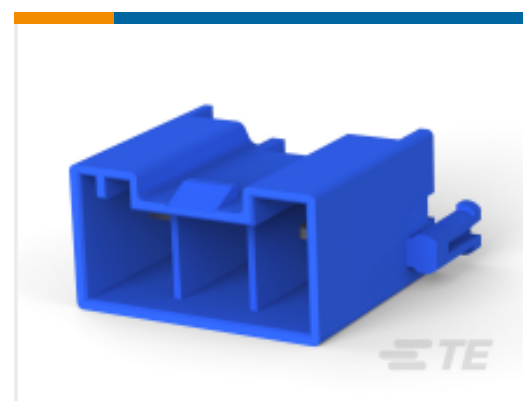
#### Product Compliance Disclaimer

This information is provided based on reasonable inquiry of our suppliers and represents our current actual knowledge based on the information they provided. This information is subject to change. The part numbers that TE has identified as EU RoHS compliant have a maximum concentration of 0.1% by weight in homogenous materials for lead, hexavalent chromium, mercury, PBB, PBDE, DBP, BBP, DEHP, DIBP, and 0.01% for cadmium, or qualify for an exemption to these limits as defined in the Annexes of Directive 2011/65/EU (RoHS2). Finished electrical and electronic equipment products will be CE marked as required by Directive 2011/65/EU. Components may not be CE marked. Additionally, the part numbers that TE has identified as EU ELV compliant have a maximum concentration of 0.1% by weight in homogenous materials for lead, hexavalent chromium, and mercury, and 0.01% for cadmium, or qualify for an exemption to these limits as defined in the Annexes of Directive 2000/53/EC (ELV). Regarding the REACH Regulation, the information TE provides on SVHC in articles for this part number is based on the latest European Chemicals Agency (ECHA) 'Guidance on requirements for substances in articles' posted at this URL: <https://echa.europa.eu/guidance-documents/guidance-on-reach>

## Compatible Parts



TE Part # 1747996-2  
GHC EYELET 12.4 2POS HEADER  
ASSY RED



TE Part # 1747996-3  
GHC EYELET 12.4 2POS HEADER  
ASSY BLUE



TE Part # 1747995-1  
GHC EYELET 6.2 3POS PLUG  
HOUSING NATURAL



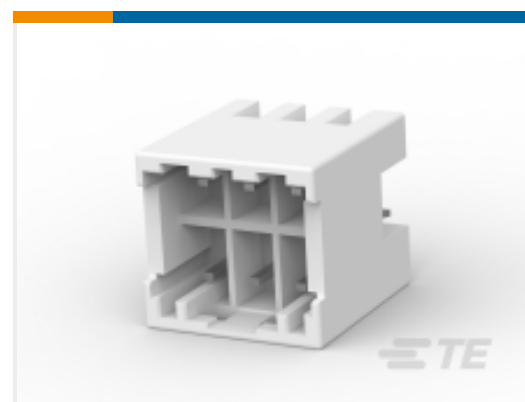
TE Part # 1747996-4  
GHC EYELET 12.4 2POS HEADER  
ASSY YELLOW

## Also in the Series | GRACE INERTIA 12.4

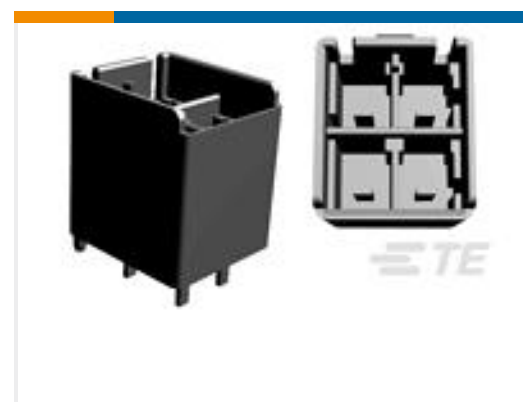


Rectangular Power Connectors(4)

## Customers Also Bought



TE Part #1-1747052-2  
Glow Wire GRACE INERTIA Header



TE Part #5-1376386-1  
5.0 POWER KEY CONNECTOR 4P (2R)



TE Part #1-1871843-6  
GIC2.5 HDR ASSY TIN VERSION 6P  
RED



TE Part #2-2232511-7  
7P, RAST 5 TAB HEADER, THV  
RED



TE Part #2292457-4  
4P, RAST 5 HEADER, PL, SHROUDED



TE Part #3-1376386-5  
5mm B-T-W Conn. 4P(2row) HDR A

## Documents

### Product Drawings

GHC EYELET 12.4 2POS HEADER ASSY NATURAL

English



### CAD Files

#### Customer View Model

[ENG\\_CVM\\_CVM\\_1747996-1\\_F.2d\\_dxf.zip](#)

English

#### 3D PDF

3D

#### Customer View Model

[ENG\\_CVM\\_CVM\\_1747996-1\\_F.3d\\_igs.zip](#)

English

#### Customer View Model

[ENG\\_CVM\\_CVM\\_1747996-1\\_F.3d\\_stp.zip](#)

English

By downloading the CAD file I accept and agree to the [Terms and Conditions](#) of use.

### Datasheets & Catalog Pages

[1-1773883-5 GRACE INERTIA connector quick reference guide](#)

English

### Product Specifications

[Application Specification](#)

English

### Product Environmental Compliance

[MD\\_1747996-1\\_10302013118\\_dmtec](#)

English

[MD\\_1747996-1\\_10302013118\\_dmtec](#)

English

### Agency Approvals

[UL Report](#)

English