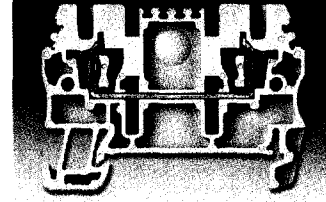


NEW PRODUCT

FEED THROUGH TERMINAL BLOCKS

- Slimmest terminal block available
- Only 3.5 mm wide – takes up 42% less space on TS 35 DIN-Rail
- 86 Termination points per foot of rail
- 2 jumpering channels per terminal
- Rated for: 300 V, 10 A, 28...16 AWG

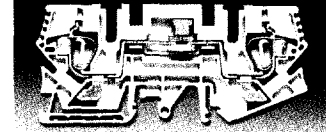
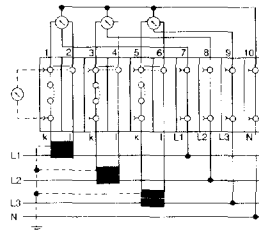


Description	Part No.	Description	Part No.
ZDU 1.5	1775480000	ZDU 1.5/4AN	1775580000
ZDU 1.5/3AN	1775530000		

NEW PRODUCT

DISCONNECT TERMINAL BLOCKS

- Pluggable jumpers with locking clip for quick circuit manipulation
- Ideal for current transformer circuits
- Produce optional test applications with a variety of termination methods
- Rated for 600 V, 33 A, 20...8 AWG

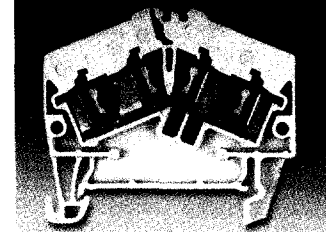


Description	Part No.	Description	Part No.
ZTL 6/STB	1771800000	ZTD 6	1771810000

NEW PRODUCT

Z-ROOF FEED THROUGH TERMINAL BLOCKS

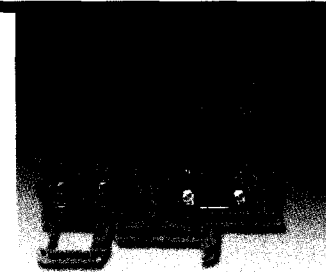
- Reduce space (width) requirements by 30%
- Pluggable Jumpers Acceptable
- Rated for 600 V, 20...65 A, 26...4 AWG



Description	Part No.	Description	Part No.
ZDU 2.5-2	1772060000	ZPE 2.5-2	170609
ZDU 4-2	1770370000	ZPE 4-2	1770380000

PLUGGABLE TERMINALS

- Provides a pluggable header or connector for quick disconnects, testing or maintenance
- Allows for greater density with branch, dual, triple, or four level configurations
- Modular construction; plug-in connectors for 2-12 poles
- Base terminal and plug-in connector equipped with 2 connections and 2 cross-connection channels for greater wiring flexibility



Description	Part No.	Description	Part No.
ZKBD 2.5/1.5	168826	ZDKB	169960
ZKSD 2.5/1.5	169761	ZRV 1.5	169816
ZDKS	1699611111	ZKB 1.5	174262

More products are available than shown.
Please contact us or visit our website,
www.weidmuller.com.