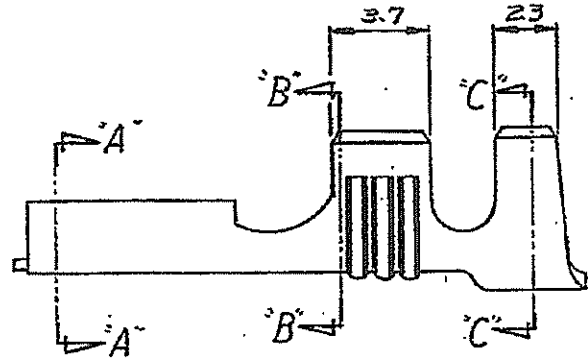
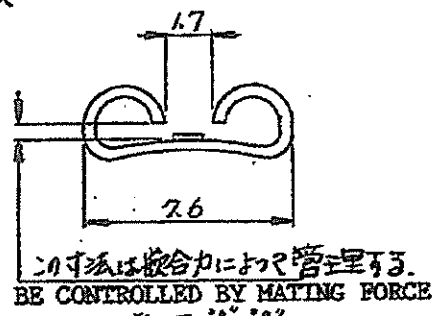
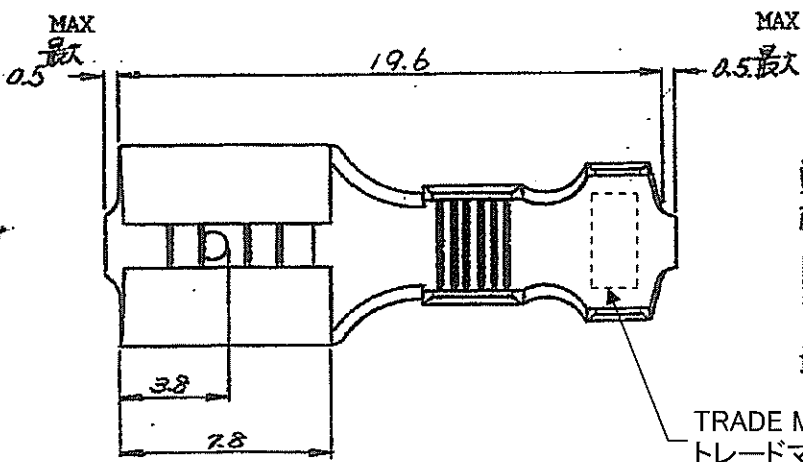
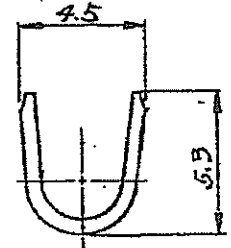


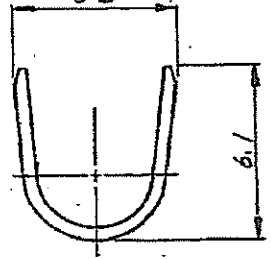
DRAWING NUMBER: 6-170224



断面 A-A
SECT



断面 B-B
SECT



断面 C-C

NOTES:

- SEE DWG CP63-048J FOR THE DETAIL OF MATING TAB
- PRODUCT SPEC 108-5006, APPLICATION SPEC 114-5023

注:

- 嵌合するコネクタの詳細についてはCP63-048Jの図面参照の事
- 製品規格番号 108-5006, 圧着規格番号 114-5023.
- 複数の電線組合せ可能 (参考).
- 最小の組合せ(2本圧着): $0.5\text{mm}^2 + 1.25\text{mm}^2$ (ワイレンジ最小)
- 最大の組合せ(3本圧着): $0.5\text{mm}^2 + 0.5\text{mm}^2 + 1.3\text{mm}^2$ (被覆外径最高)

3 PLURAL WIRE CRIMPING(REF)

MIN. CONDITION (2 WIRES): $0.5\text{mm}^2 + 1.25\text{mm}^2$ (MIN. WIRE RANGE)

MAX. CONDITION (3 WIRES):

$0.5\text{mm}^2 + 0.5\text{mm}^2 + 1.3\text{mm}^2$ (MAX. INS DIA RANGE)

170224-2	黄銅	0.45	錫めっき
170224-1	黄銅	0.45	
連鎖状型番	枚数	板厚	仕上

DIMENSIONS IN MM. DO NOT SCALE PRINT

B	PA(S)RIP ECR-07-011381	MAX L	J.S	S.M	25/MAY/07	参考図面 (CUSTOMER COPY) (REFERENCE ONLY)
AI	ADDED ENGLISH	J-1448	None	7/6		
A	REVISED					
O2	REVISED (REV A1)					
O1	ADDED (REV A)					
O	RELEASED					
LTR	変更 (REVISION RECORD)	DR	CHK	DATE		
DR	M. YUSUKE 7/14 76	DE	M. NISHIDA 7/14 76			
CHK	M. ARAHATA 7/15 76	APP	Y. SATO 7/16 76			
(MATERIAL) 参考照 SEE TABLE (FINISH) 参考照 SEE TABLE (WIRE RANGE) 参考照 SEE TABLE (INSULATION DIA.) 参考照 SEE TABLE (SCALE) 参考照 SEE TABLE						Tyco Electronics Kawasaki, Japan
(CLASS) FASTON (TYPE) オートマチック AUTOMATIC						
(TOLERANCE) ±0.4 EXCEPT AS NOTED ±1°						
(NAME) "250" SERIES FASTON RECEPTACLE 250 シ-ズ-ファストン-レセプタクル						
(SCALE) 4-1 (LOC) JAG-170224 (REV) B						