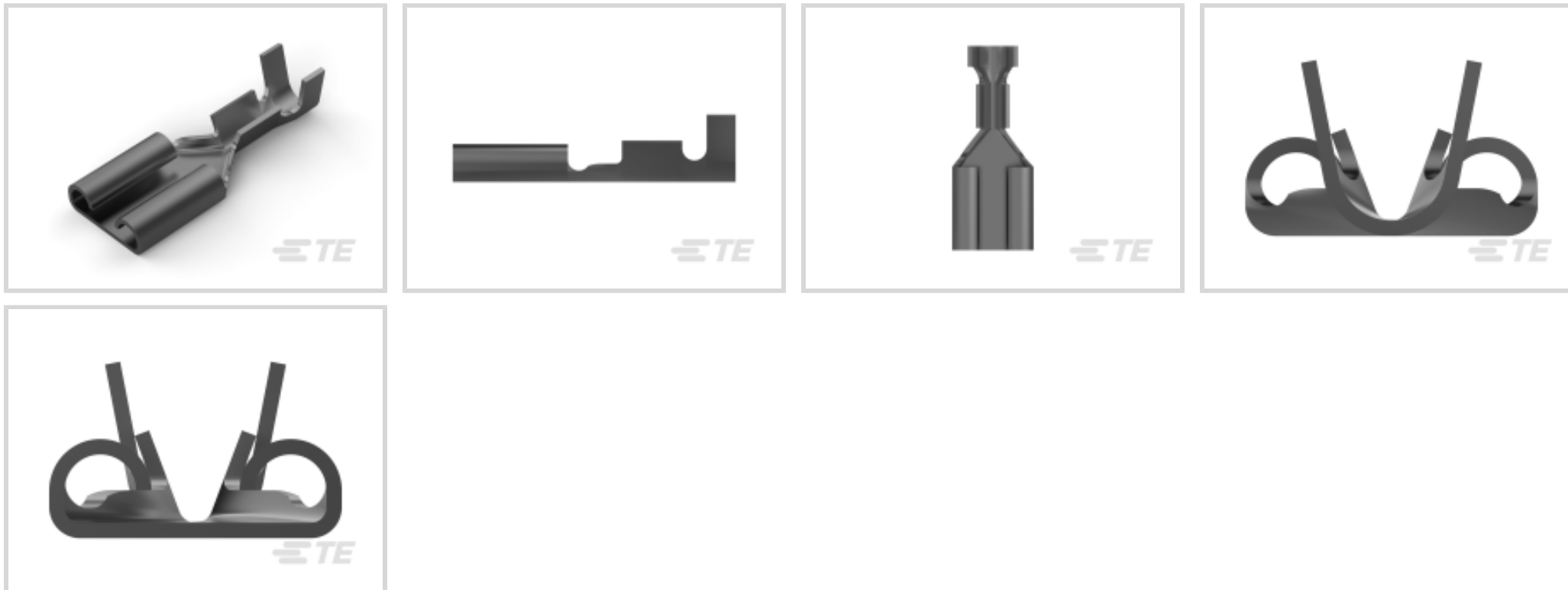




Terminals & Splices > Quick Disconnects



Quick Disconnect Terminal Type: **Receptacle**

Wire Size: .32 – .82 mm<sup>2</sup>

Mating Tab Width: 6.35 mm [.25 in]

Mating Tab Thickness: .81 mm [.032 in]

## Features

### Product Type Features

Terminates To	Wire & Cable
Wire/Cable Type	Regular Wire
Wire Stop	No
Insertion Force	Normal
Sealable	No

### Configuration Features

Connection Capacity	Single
---------------------	--------

### Contact Features

Quick Disconnect Terminal Type	Receptacle
Mating Tab Width	6.35 mm [.25 in]
Mating Tab Thickness	.81 mm [.032 in]
Terminal Orientation	Straight
Contact Base Material	Brass
Terminal Plating Material	Tin
Crimp Type	F-Crimp



Barrel Type	Open
-------------	------

### Mechanical Attachment

Mating Retention Type	Dimple
Extraction Force	24.5 Newton
Wire Insulation Support	With

### Dimensions

Accepts Wire Insulation Diameter Range	2.3 – 3.3 mm [.09 – .13 in]
Receptacle Terminal Stock Thickness	.41 mm [.016 in]
Overall Length	20.45 mm [.805 in]
Wire Size	.32 – .82 mm <sup>2</sup>

### Usage Conditions

Insulation Option	Uninsulated
Operating Temperature Range	-40 – 110 °C [-40 – 230 °F]

### Industry Standards

CSA Certified	Yes
UL Rating	Listed

### Packaging Features

Packaging Quantity	1000
Packaging Method	Loose Piece/Carton

### Other

Line	Premier
------	---------

### Product Compliance

[For compliance documentation, visit the product page on TE.com>](#)

EU RoHS Directive 2011/65/EU	Compliant
EU ELV Directive 2000/53/EC	Compliant
China RoHS 2 Directive MIIT Order No 32, 2016	No Restricted Materials Above Threshold
EU REACH Regulation (EC) No. 1907/2006	Current ECHA Candidate List: JUNE 2022 (224) Candidate List Declared Against: JAN 2022 (223) SVHC > Threshold: Not Yet Reviewed
Halogen Content	Low Halogen - Br, Cl, F, I < 900 ppm per



homogenous material. Also BFR/CFR/PVC Free

Solder Process Capability

Not applicable for solder process capability

Product Compliance Disclaimer

This information is provided based on reasonable inquiry of our suppliers and represents our current actual knowledge based on the information they provided. This information is subject to change. The part numbers that TE has identified as EU RoHS compliant have a maximum concentration of 0.1% by weight in homogenous materials for lead, hexavalent chromium, mercury, PBB, PBDE, DBP, BBP, DEHP, DIBP, and 0.01% for cadmium, or qualify for an exemption to these limits as defined in the Annexes of Directive 2011/65/EU (RoHS2). Finished electrical and electronic equipment products will be CE marked as required by Directive 2011/65/EU. Components may not be CE marked. Additionally, the part numbers that TE has identified as EU ELV compliant have a maximum concentration of 0.1% by weight in homogenous materials for lead, hexavalent chromium, and mercury, and 0.01% for cadmium, or qualify for an exemption to these limits as defined in the Annexes of Directive 2000/53/EC (ELV). Regarding the REACH Regulation, the information TE provides on SVHC in articles for this part number is based on the latest European Chemicals Agency (ECHA) 'Guidance on requirements for substances in articles' posted at this URL: <https://echa.europa.eu/guidance-documents/guidance-on-reach>

### Compatible Parts



TE Part # 61765-1  
FASTON ADAPTER .250 RECEPTACLE BR



TE Part # 42025-4  
250 FASTON REC 18-16 AWG TPBR



TE Part # 90166-1  
DAHT 250 FASTON REC 22-18 ASSY



TE Part # 61810-2  
FASTON .250 (6.3 MM) RECEPTACLE TPBR



TE Part # 63699-1  
ADAPTER 187 FASTON TPBR



TE Part # 1742597-1  
ADAPTER,FASTON,250 REC,187 TAB, BR



TE Part # 8-61765-1  
FASTON,ADAPTER 250 HOUSING REC&TAB TPBR



TE Part # 91514-1  
CCII FASTON 250 REC 22-18 ASSY



TE Part # 152422-1  
250 FASTON,TAB,ADAPTER,BR



TE Part # 539740-2  
DIE F6. 3FF REC.



TE Part # 61873-1  
250 FASTON REC 18-14 AWG TPBR

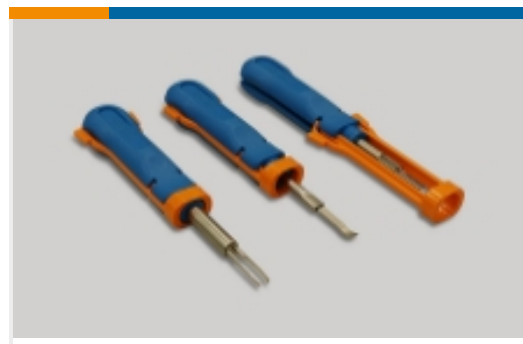
### Also in the Series | FASTON 250



Compression Connectors(4)



Crimp Terminal Housings(143)



Insertion & Extraction Tools(6)



Magnet Wire Terminals(1)



PCB Terminals(144)

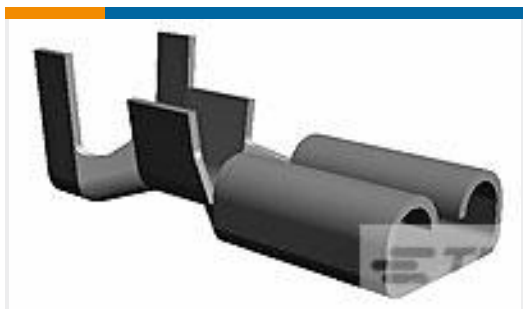


Quick Disconnects(456)



Splices(4)

## Customers Also Bought



TE Part #170038-2  
187 FASTON,REC.,20-16 AWG,TPBR



TE Part #170205-1  
E.I. SERIES CONTACT LP



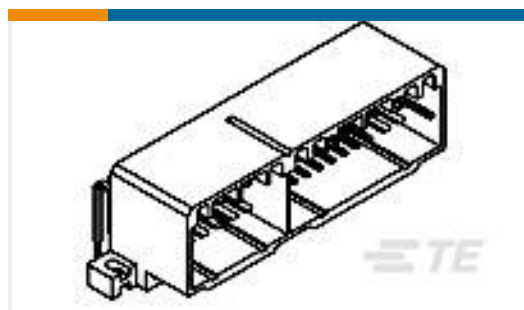
TE Part #42214-2  
250 FASTON TAB TPBR



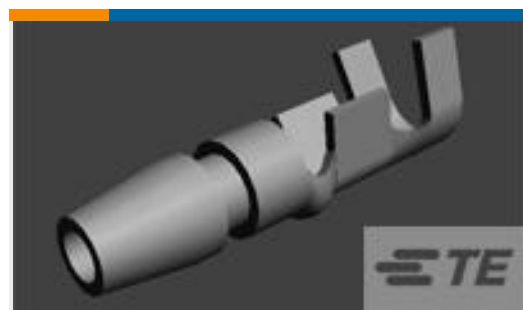
TE Part #170203-2  
187 FASTON,REC.,24-20 AWG,TPBR



TE Part #172211-3  
EIS CAP HSG FREE HANG 3P  
NATUTURAL



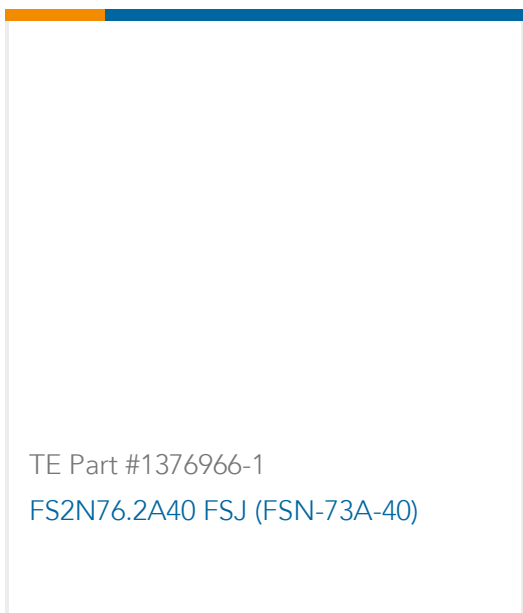
TE Part #173866-4  
070 MULTILOCK CAP ASSY 30P GRN



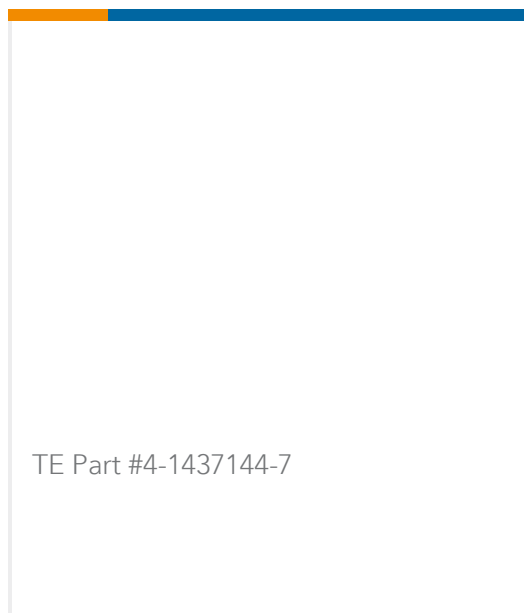
TE Part #170020-2  
SHUR PLUG 20-14 MM2 TPBR



TE Part #1-170823-3  
187 FASTON SLEEVE,REC.,  
TRANSPARENT,NAT



TE Part #1376966-1  
FS2N76.2A40 FSJ (FSN-73A-40)



TE Part #4-1437144-7

## Documents



### Product Drawings

[250 FASTON,REC.,22-18 AWG,TPBR](#)

Japanese

---

### CAD Files

[3D PDF](#)

3D

Customer View Model

[ENG\\_CVM\\_CVM\\_170187-2\\_C\\_c-170187-2-c.2d\\_dxf.zip](#)

English

Customer View Model

[ENG\\_CVM\\_CVM\\_170187-2\\_C\\_c-170187-2-c.3d\\_igs.zip](#)

English

Customer View Model

[ENG\\_CVM\\_CVM\\_170187-2\\_C\\_c-170187-2-c.3d\\_stp.zip](#)

English

By downloading the CAD file I accept and agree to the [Terms and Conditions](#) of use.

---

### Product Specifications

[Application Specification](#)

English

---

### Product Environmental Compliance

[MD\\_170187-2\\_102120151159\\_dmtec](#)

English

[MD\\_170187-2\\_102120151159\\_dmtec](#)

English