



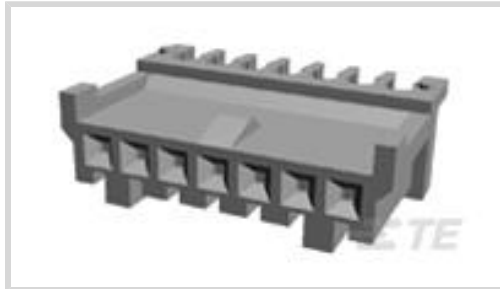
MTEI

TE Internal #: 172053-4

Connector Assembly, Receptacle, Wire-to-Board, 4 Position, 2.5 mm [.098 in] Centerline, Insulation Displacement (IDC), 1 Row, Natural, MTEI

[View on TE.com >](#)

Connectors > PCB Connectors > Wire-to-Board Connectors > Wire-to-Board Connector Assemblies & Housings



Connector Product Type: **Connector Assembly**

Connector & Housing Type: **Receptacle**

Connector System: **Wire-to-Board**

Number of Positions: **4**

Centerline (Pitch): **2.5 mm [.098 in]**

Features

Product Type Features

Connector Product Type	Connector Assembly
Connector & Housing Type	Receptacle
Connector System	Wire-to-Board
Sealable	No
Connector & Contact Terminates To	Wire & Cable

Configuration Features

Number of Positions	4
Number of Rows	1

Electrical Characteristics

Operating Voltage	250 VAC
-------------------	---------

Contact Features

Contact Layout	In-line
Contact Retention Within Housing	With
Contact Type	Socket
Contact Base Material	Phosphor Bronze
Contact Current Rating (Max)	2.5 A

Termination Features

Termination Method to Wire & Cable	Insulation Displacement (IDC)
------------------------------------	-------------------------------



Mechanical Attachment

Strain Relief	Without
Contact Retention Type Within Housing	Locking Lance
Panel Mount Feature	Without
Mating Retention	With
Connector Mounting Type	Cable Mount (Free-Hanging)

Housing Features

Housing Material	Nylon 66
Centerline (Pitch)	2.5 mm [.098 in]
Housing Color	Natural

Dimensions

Connector Length	12.5 mm [.492 in]
Connector Height	13.8 mm [.543 in]
Accepts Wire Insulation Diameter Range	1.1 – 1.5 mm [.043 – .059 in]
Wire Size	.12 – .15 mm ²

Usage Conditions

Operating Temperature Range	-20 – 95 °C [-4 – 203 °F]
-----------------------------	---------------------------

Operation/Application

Circuit Application	Signal
---------------------	--------

Industry Standards

Approved Standards	UL Recognized
UL Flammability Rating	UL 94V-0
UL Rating	Recognized
Agency/Standard	UL

Packaging Features

Packaging Quantity	500
Packaging Method	Bag

Product Compliance

For compliance documentation, visit the product page on [TE.com](#)>

EU RoHS Directive 2011/65/EU	Compliant
EU ELV Directive 2000/53/EC	Compliant

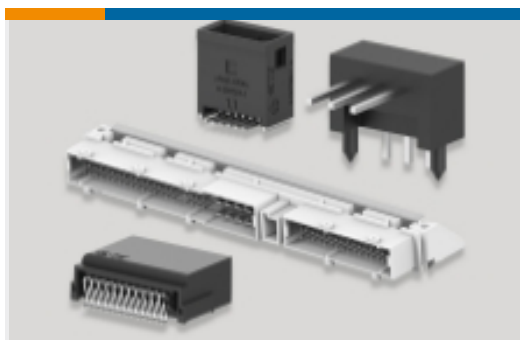


China RoHS 2 Directive MIIT Order No 32, 2016	No Restricted Materials Above Threshold
EU REACH Regulation (EC) No. 1907/2006	Current ECHA Candidate List: JUNE 2022 (224) Candidate List Declared Against: JUL 2021 (219) SVHC > Threshold: Not Yet Reviewed
Halogen Content	Low Halogen - Br, Cl, F, I < 900 ppm per homogenous material. Also BFR/CFR/PVC Free
Solder Process Capability	Not applicable for solder process capability

Product Compliance Disclaimer

This information is provided based on reasonable inquiry of our suppliers and represents our current actual knowledge based on the information they provided. This information is subject to change. The part numbers that TE has identified as EU RoHS compliant have a maximum concentration of 0.1% by weight in homogenous materials for lead, hexavalent chromium, mercury, PBB, PBDE, DBP, BBP, DEHP, DIBP, and 0.01% for cadmium, or qualify for an exemption to these limits as defined in the Annexes of Directive 2011/65/EU (RoHS2). Finished electrical and electronic equipment products will be CE marked as required by Directive 2011/65/EU. Components may not be CE marked. Additionally, the part numbers that TE has identified as EU ELV compliant have a maximum concentration of 0.1% by weight in homogenous materials for lead, hexavalent chromium, and mercury, and 0.01% for cadmium, or qualify for an exemption to these limits as defined in the Annexes of Directive 2000/53/EC (ELV). Regarding the REACH Regulation, the information TE provides on SVHC in articles for this part number is based on the latest European Chemicals Agency (ECHA) 'Guidance on requirements for substances in articles' posted at this URL: <https://echa.europa.eu/guidance-documents/guidance-on-reach>

Also in the Series | MTEI



PCB Headers & Receptacles(3)



Wire-to-Board Connector Assemblies & Housings(53)

Customers Also Bought



TE Part #1-179555-8
Receptacle and Tab Housing: 5.08 mm pitch, 250-600V



TE Part #1-178802-8
Receptacle and Tab Housing: 3.81 mm pitch, 250V



TE Part #170148-1
MATE-N-LOK SOC LP



TE Part #176293-1
UNIV POWER CAP HSG 3P P/MOUNT

Documents



Product Drawings

MTEI CONN 4P REC ASSY

English

MTEI CONN 4P REC ASSY

English

MTEI CONN 4P REC ASSY

English

MTEI CONN 4P REC ASSY

Japanese

CAD Files

3D PDF

English

Customer View Model

ENG_CVM_172053-4_D.3d_igs.zip

English

Customer View Model

ENG_CVM_172053-4_D.3d_stp.zip

English

Customer View Model

ENG_CVM_172053-4_D.2d_dxf.zip

English

By downloading the CAD file I accept and agree to the [Terms and Conditions](#) of use.

Datasheets & Catalog Pages

1-1773972-5_EIS_Connectors_Brochure

English

Product Specifications

Terminating AMP MTEI Connector

English

Application Specification

English

Instruction Sheets

Instruction Sheet (non U.S.)

Japanese

Instruction Sheet (non U.S.)

Japanese

PISTOL TOOL, MTEI

Japanese

Instruction Sheet (non U.S.)

Japanese

Agency Approvals

172053-4

Connector Assembly, Receptacle, Wire-to-Board, 4 Position, 2.5 mm [.098 in]
Centerline, Insulation Displacement (IDC), 1 Row, Natural, MTEI



Agency Approval Document

English