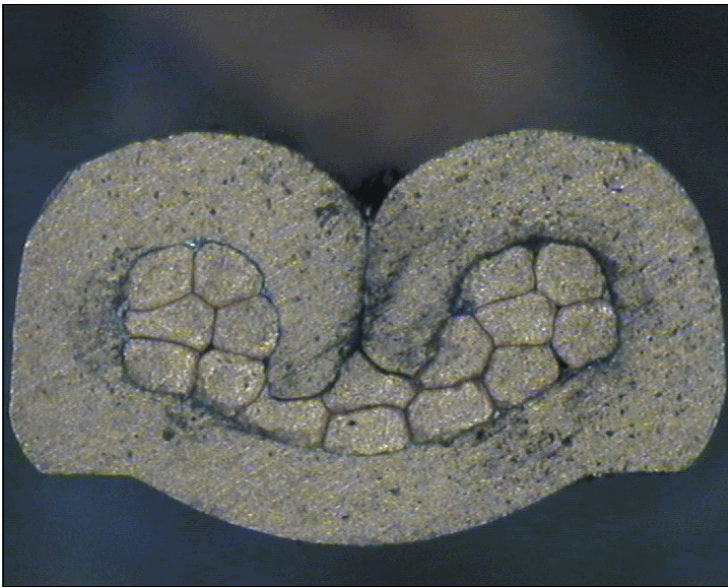


DELPHI PN 15493001



cable:
 $0,50 \text{ mm}^2 = 16 \times 0,21 \text{ mm}$

crimp height:
1,10 mm

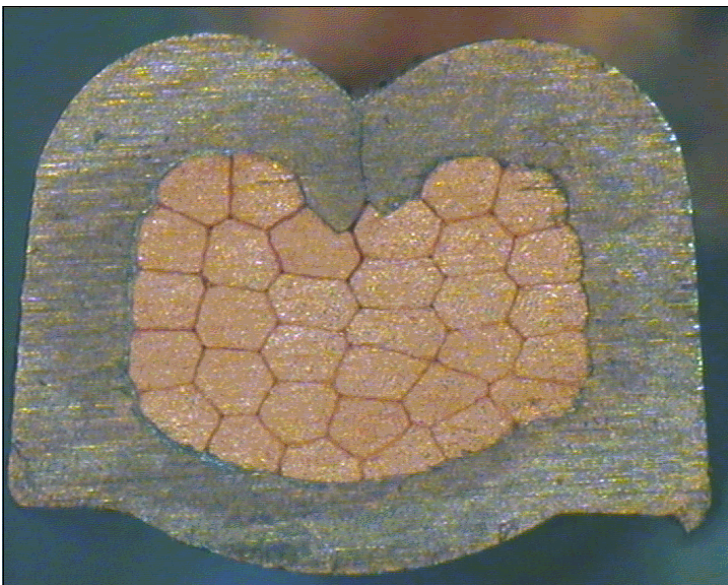
crimp width:
1,90 mm



cable:
 $0,75 \text{ mm}^2 = 24 \times 0,21 \text{ mm}$

crimp height:
1,20 mm

crimp width:
1,90 mm



cable:
 $1,00 \text{ mm}^2 = 32 \times 0,21 \text{ mm}$

crimp height:
1,30 mm

crimp width:
1,95 mm