

Crimp - Validation

DELPHI

product: DELPHI PN 15457991

material: CUFE2P

VERSION I

surface: SN

material thickness: 0,32 mm

cross section [mm²]: 1,5

strip length: 4,00 mm

cable type: FLRY-B

insulation ϕ [mm]: 2,20 - 2,40

seal: DPN 10720807

**Uncontrolled
Copy
For Information only!**

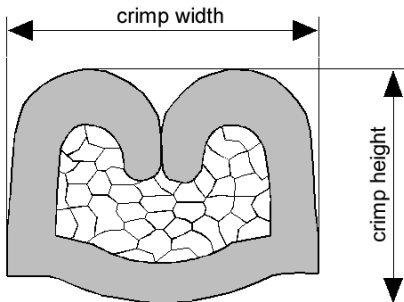
conductor dimension					crimp dimension [mm]					
cable type	cross sect. [mm ²]	struct. n x d [mm]	insul. diam. [mm]	tear-out force [N]	core		insulation			
					height $\pm 0,05$	width $\pm 0,10$	height $\pm 0,10$	width $\pm 0,10$	height $\pm tol.$	width $\pm tol.$
FLRY-B	1,5	30 x 0,26	2,30	200	1,60	2,25	3,50	3,50		

core:
C-2.15-3.0-15
DPN 10713697

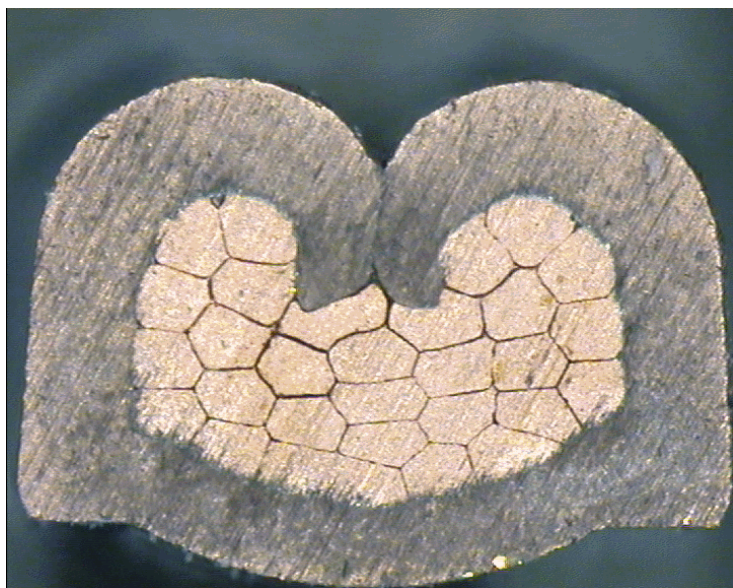
insulation:
IS-3.50-3.5-12
DPN 10713811

anvil:

two piece anvil:
AC-2.15-3.25
DPN 10764130
AI-3.50-4.0-0.6
DPN 10806975



DELPHI PN 15457991



cable:
1,50 mm² = 30 x 0,26 mm

crimp height:
1,60 mm

crimp width:
2,25 mm