

product: DELPHI PN 15396705
material: CUFE2P
surface: F.SN3
material thickness: 0,32 mm
cross section [mm²]: 0,75

strip length: 4,00 mm
cable type: FLU142Y
insulation \varnothing [mm]: 1,45 - 1,60
seal:

**Uncontrolled
Copy**
For Information only!

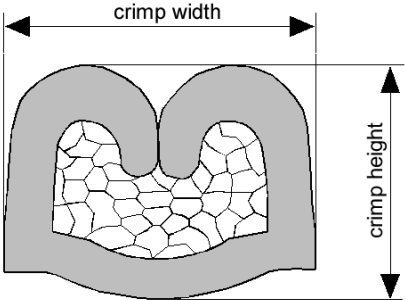
conductor dimension					crimp dimension [mm]					
cable type	cross sect. [mm ²]	struct. n x d [mm]	insul. diam. [mm]	tear-out force [N]	core		insulation			
					height \pm 0,05	width \pm 0,10	height \pm 0,10	width \pm 0,10	height \pm tol.	width \pm tol.
FLU142Y	0,75	19 x 0,24	1,52	120	1,35	1,90	2,00	2,50		

core:
C-1.85-3.0-12
DPN 10713693

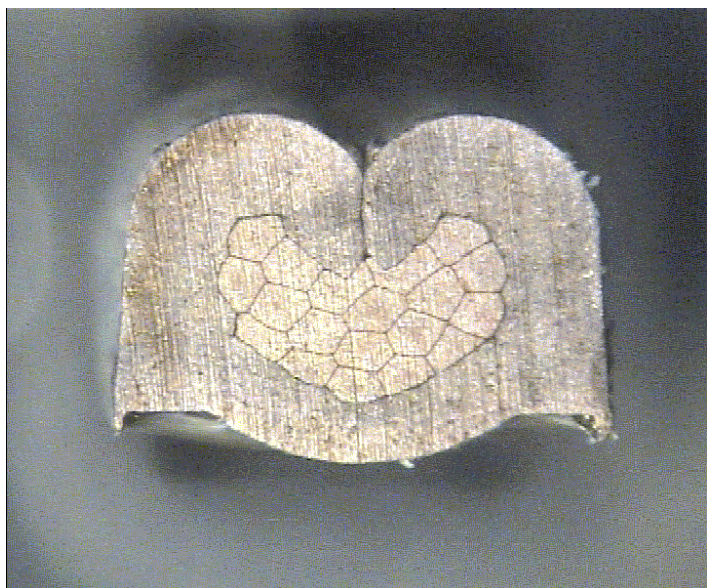
insulation:
IS-2.50-3.0-12
DPN 10713792

anvil:

two piece anvil:
AC-1.85-3.25
DPN 10764127
AI-2.50-3.6-0.2-A
DPN 10803759



DELPHI PN 15396705



cable:

0,75 mm² = 19 x 0,24 mm

crimp height:

1,35 mm

crimp width:

1,90 mm