

product: DELPHI PN 15396902

material: K55

**VERSION I**

surface: AG+SN

material thickness: 0,30 mm

cross section [mm<sup>2</sup>]: 1,5 | 2,5

strip length: 4,60 mm

cable type: FLRY-B

insulation ø [mm]: 2,20 - 3,00

seal: DPN 15324982

**Uncontrolled  
Copy**  
For Information only!

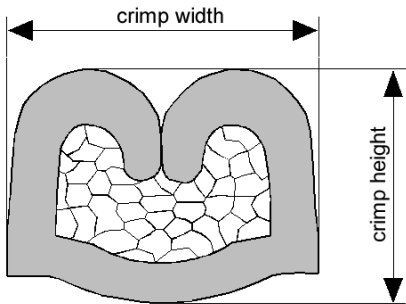
conductor dimension					crimp dimension [mm]					
cable type	cross sect. [mm <sup>2</sup> ]	struct. n x d [mm]	insul. diam. [mm]	tear-out force [N]	core		insulation			
					height ± 0,05	width ± 0,10	height ± 0,10	width ± 0,10	height ± tol.	width ± tol.
FLRY-B	1,5	30 x 0,26	2,30	200	1,70	2,60	4,60	5,00		
FLRY-B	2,5	50 x 0,26	2,85	250	1,90	2,60	4,80	5,05		

core:  
C-2.50-3.5-19  
DPN 10713724

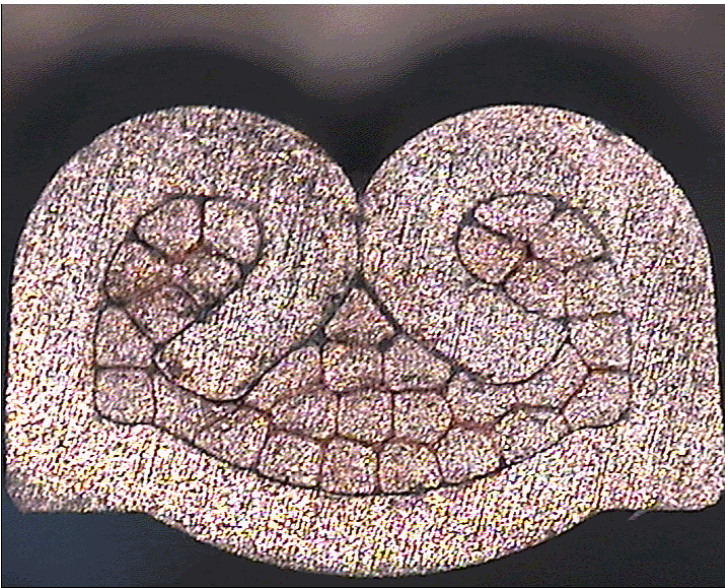
insulation:  
IS-5.00-3.0-19-X GD 66,0  
DPN 10713814

anvil:  
ASR-2.50-5.00-8.2-3.5-1.2  
DPN 10713599

two piece anvil:  
AC-2.50-3.75  
DPN 10769936  
AI-5.00-4.6-1.2  
DPN 10806164



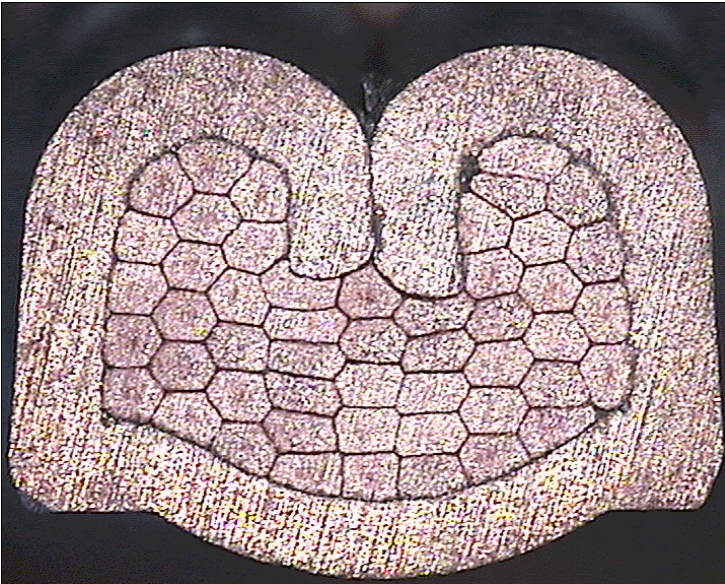
DELPHI PN 15396902



cable:  
 $1,50 \text{ mm}^2 = 30 \times 0,26 \text{ mm}$

crimp height:  
1,70 mm

crimp width:  
2,60 mm



cable:  
 $2,50 \text{ mm}^2 = 50 \times 0,26 \text{ mm}$

crimp height:  
1,90 mm

crimp width:  
2,60 mm