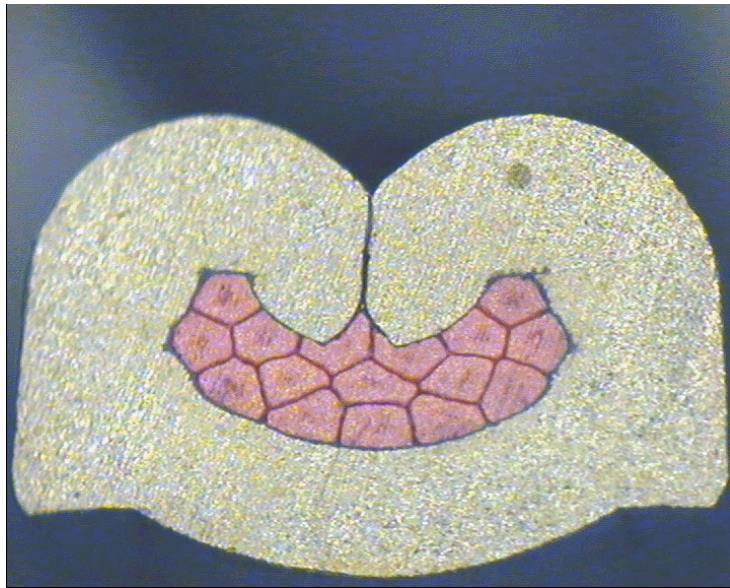


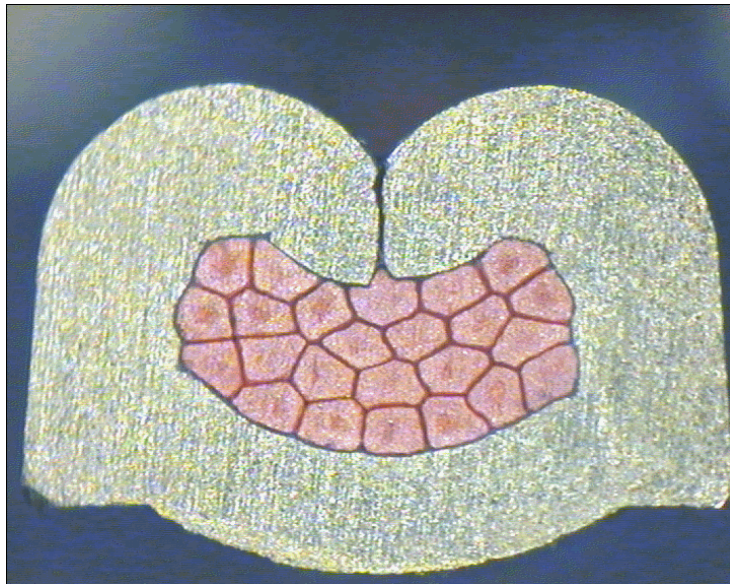
DELPHI PN 15344866



cable:
 $0,50 \text{ mm}^2 = 16 \times 0,21 \text{ mm}$

crimp height:
1,30 mm

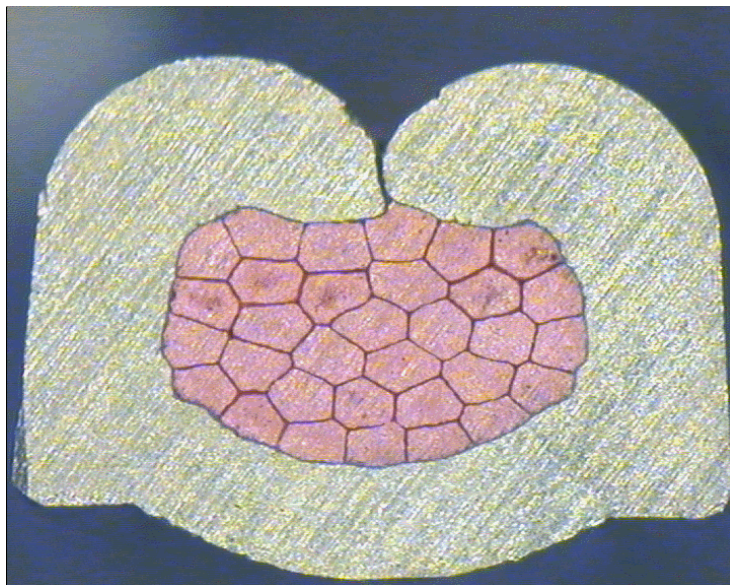
crimp width:
2,05 mm



cable:
 $0,75 \text{ mm}^2 = 24 \times 0,21 \text{ mm}$

crimp height:
1,40 mm

crimp width:
2,10 mm



cable:
 $1,00 \text{ mm}^2 = 32 \times 0,21 \text{ mm}$

crimp height:
1,50 mm

crimp width:
2,10 mm