

Crimp - Validation

DELPHI

product: DELPHI PN 15345988

material: CUFE2P

surface: SN

material thickness: 0,32 mm

cross section [mm²]: 0,35 | 0,5

strip length: 3,40 mm

cable type: FLRY-A

insulation ø [mm]: 1,20 - 1,60

seal:

**Uncontrolled
Copy**
For Information only!

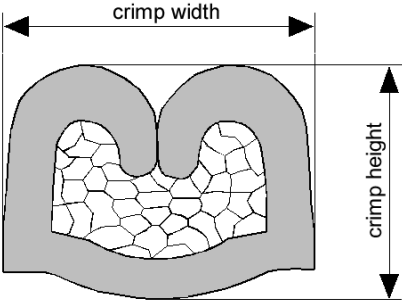
conductor dimension					crimp dimension [mm]					
cable type	cross sect. [mm ²]	struct. n x d [mm]	insul. diam. [mm]	tear-out force [N]	core		insulation			
					height ± 0,03	width ± 0,10	height ± 0,10	width ± 0,10	height ± tol.	width ± tol.
FLRY-A	0,35	7 x 0,26	1,25	50	1,05	1,60	1,90	2,00		
FLRY-A	0,5	19 x 0,19	1,50	80	1,15	1,60	2,15	2,10		

core:
C-1.50-2.5-12
DPN 10713731

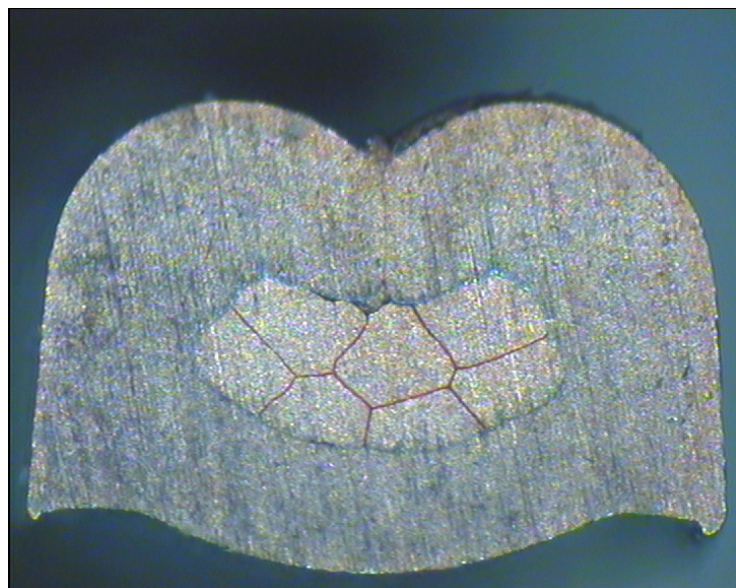
insulation:
IS-2.00-3.0-12
DPN 10713819

anvil:

two piece anvil:
AC-1.50-2.75
DPN 10764126
AI-2.00-3.8-0.2
DPN 10806819



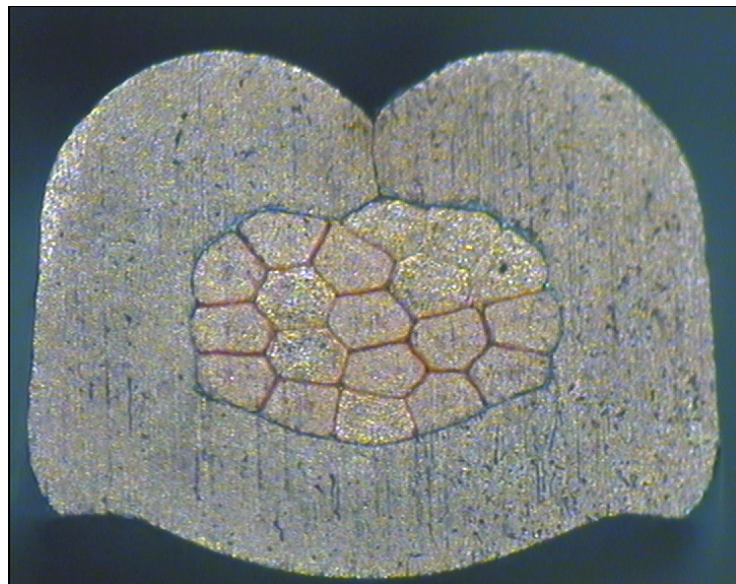
DELPHI PN 15345988



cable:
 $0,35 \text{ mm}^2 = 7 \times 0,26 \text{ mm}$

crimp height:
1,05 mm

crimp width:
1,60 mm



cable:
 $0,50 \text{ mm}^2 = 19 \times 0,19 \text{ mm}$

crimp height:
1,15 mm

crimp width:
1,60 mm