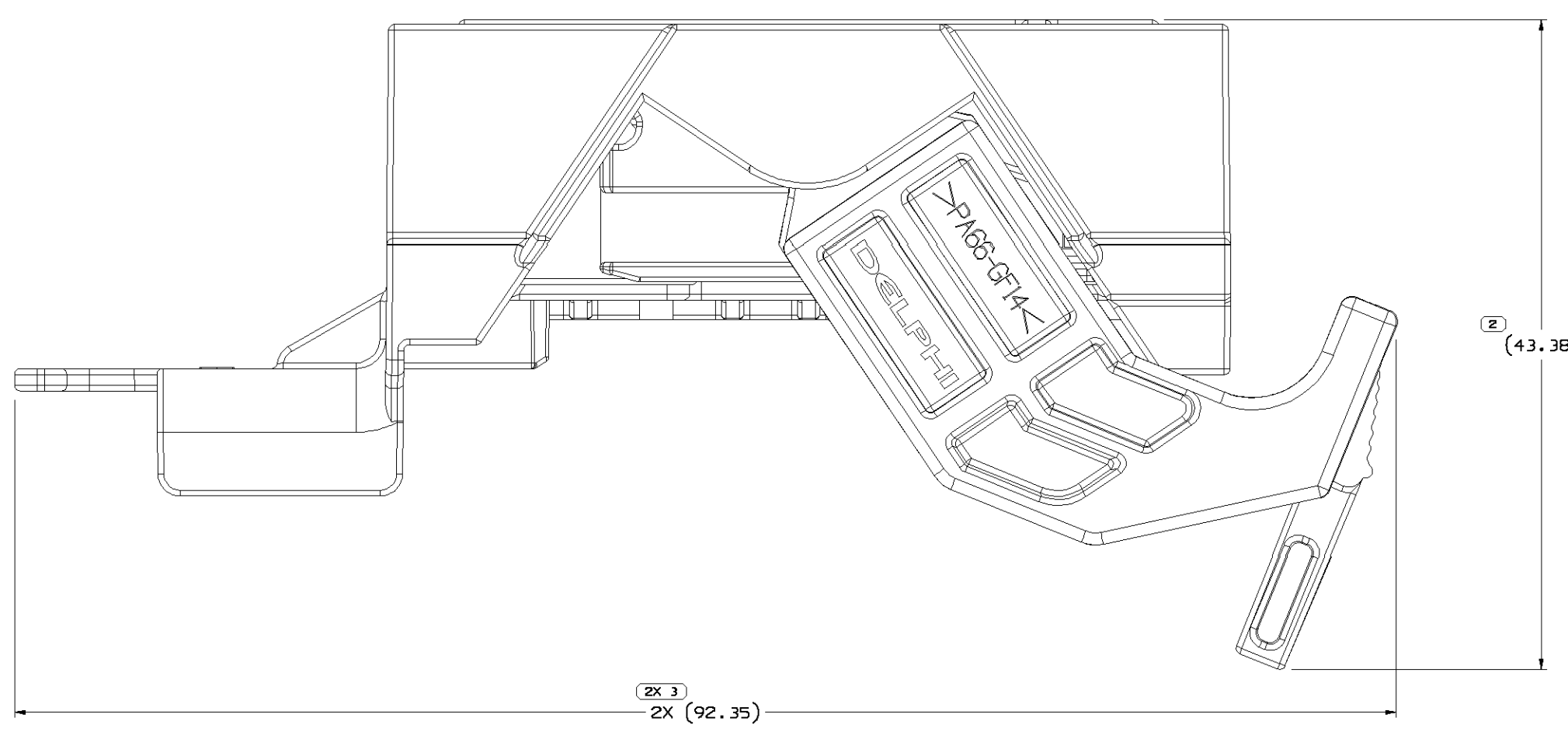
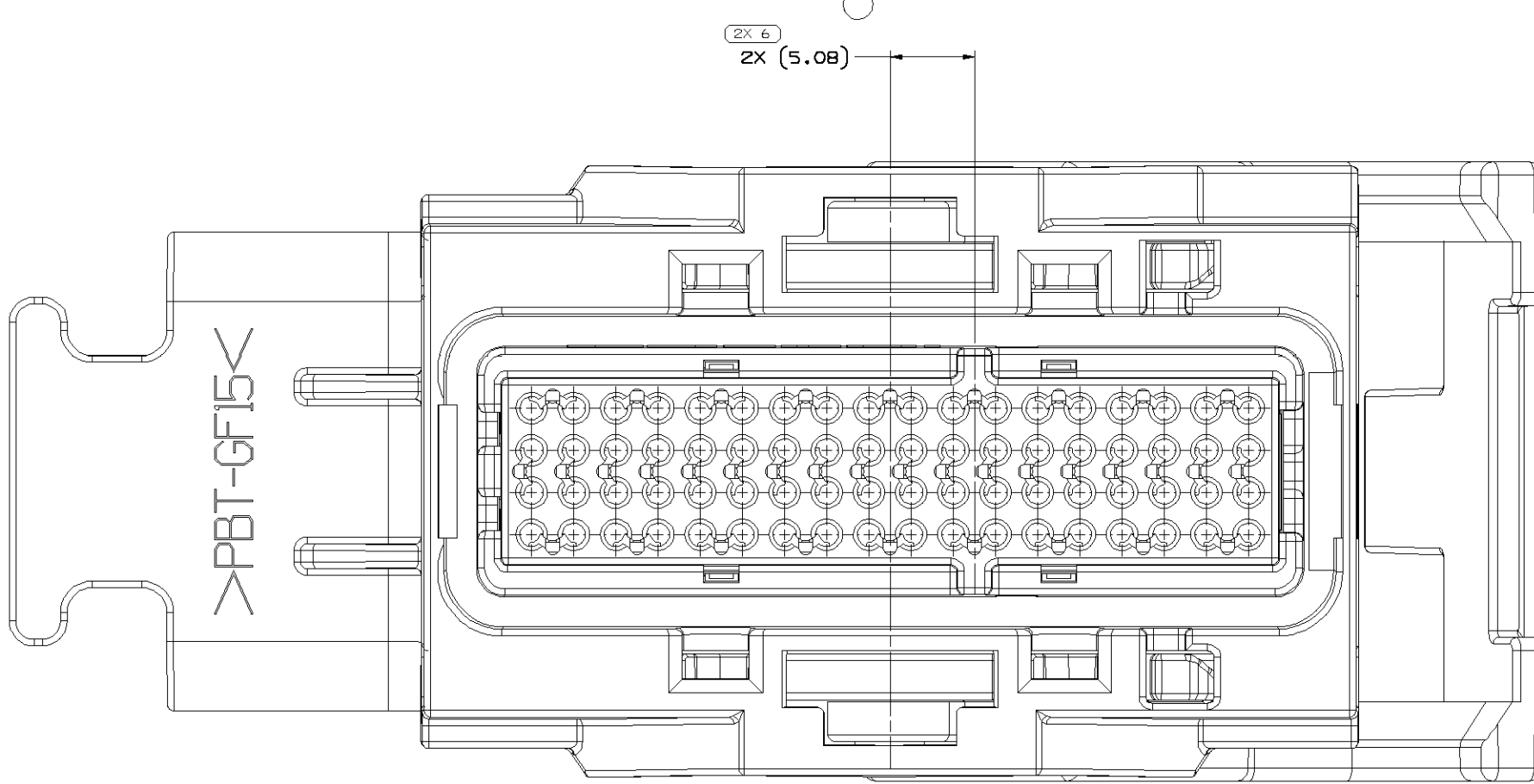
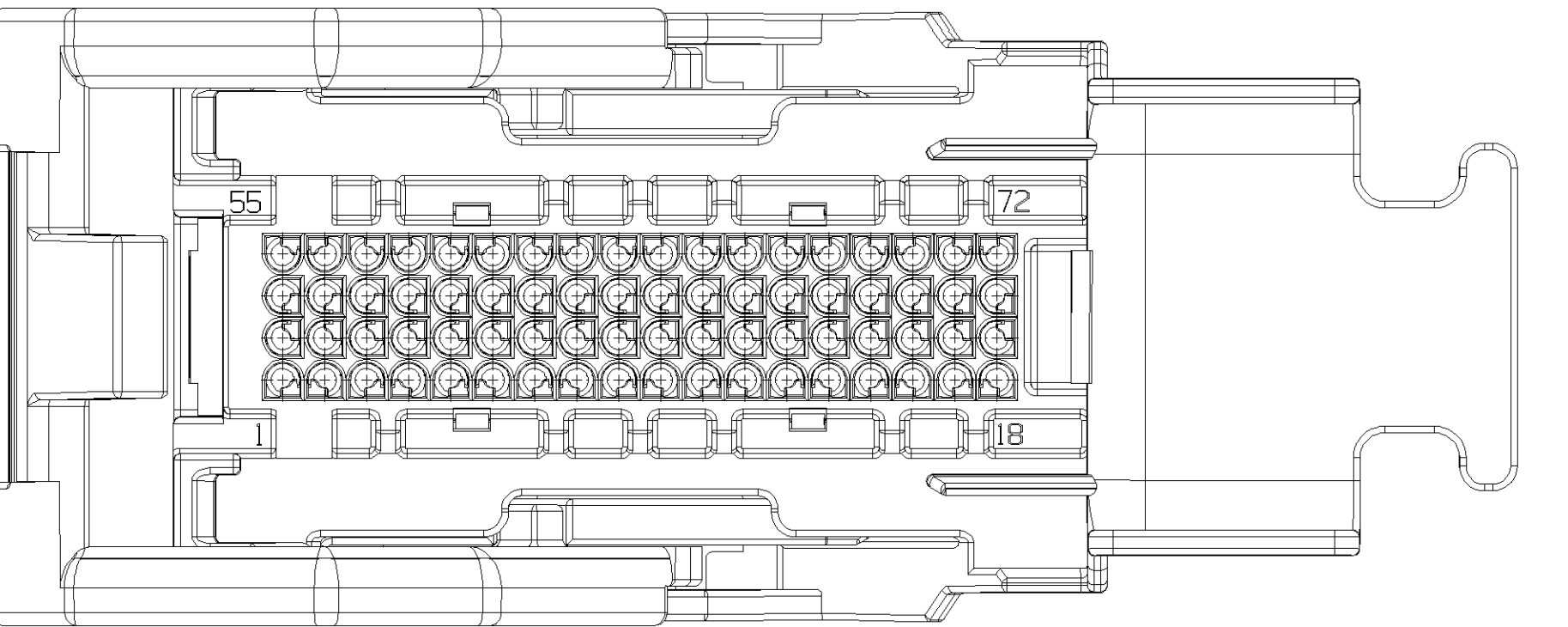
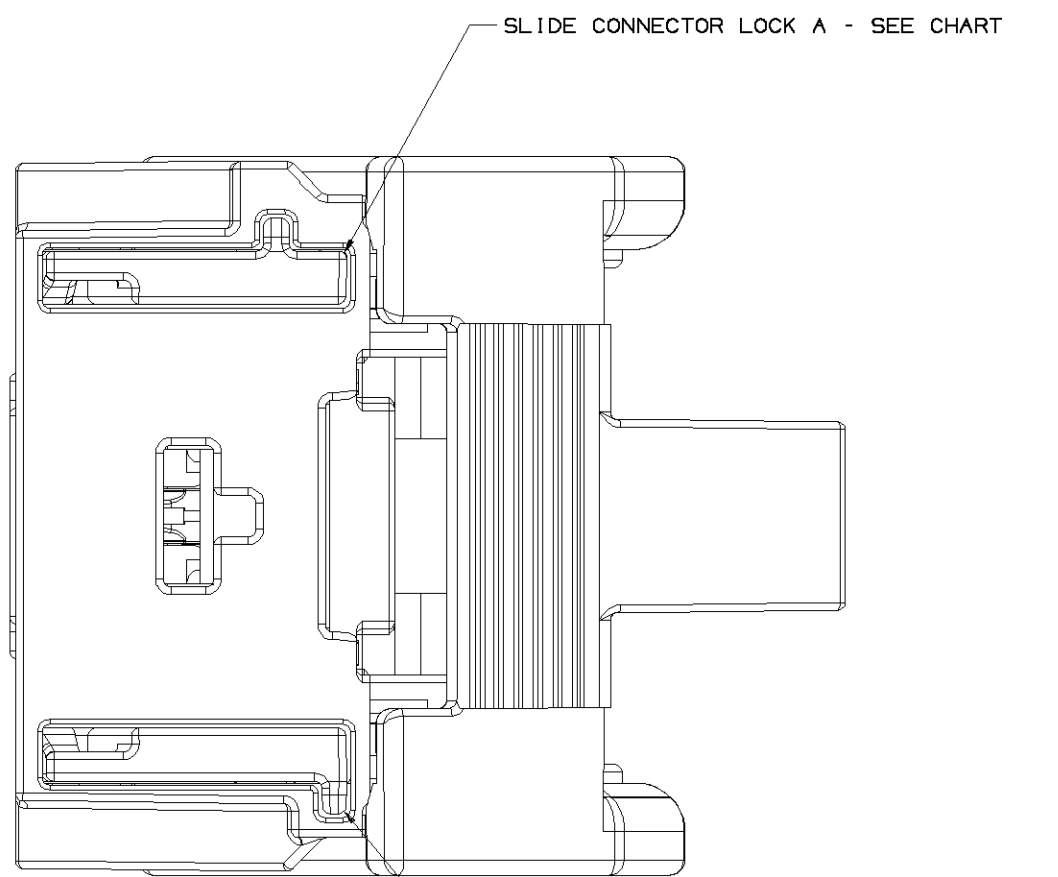
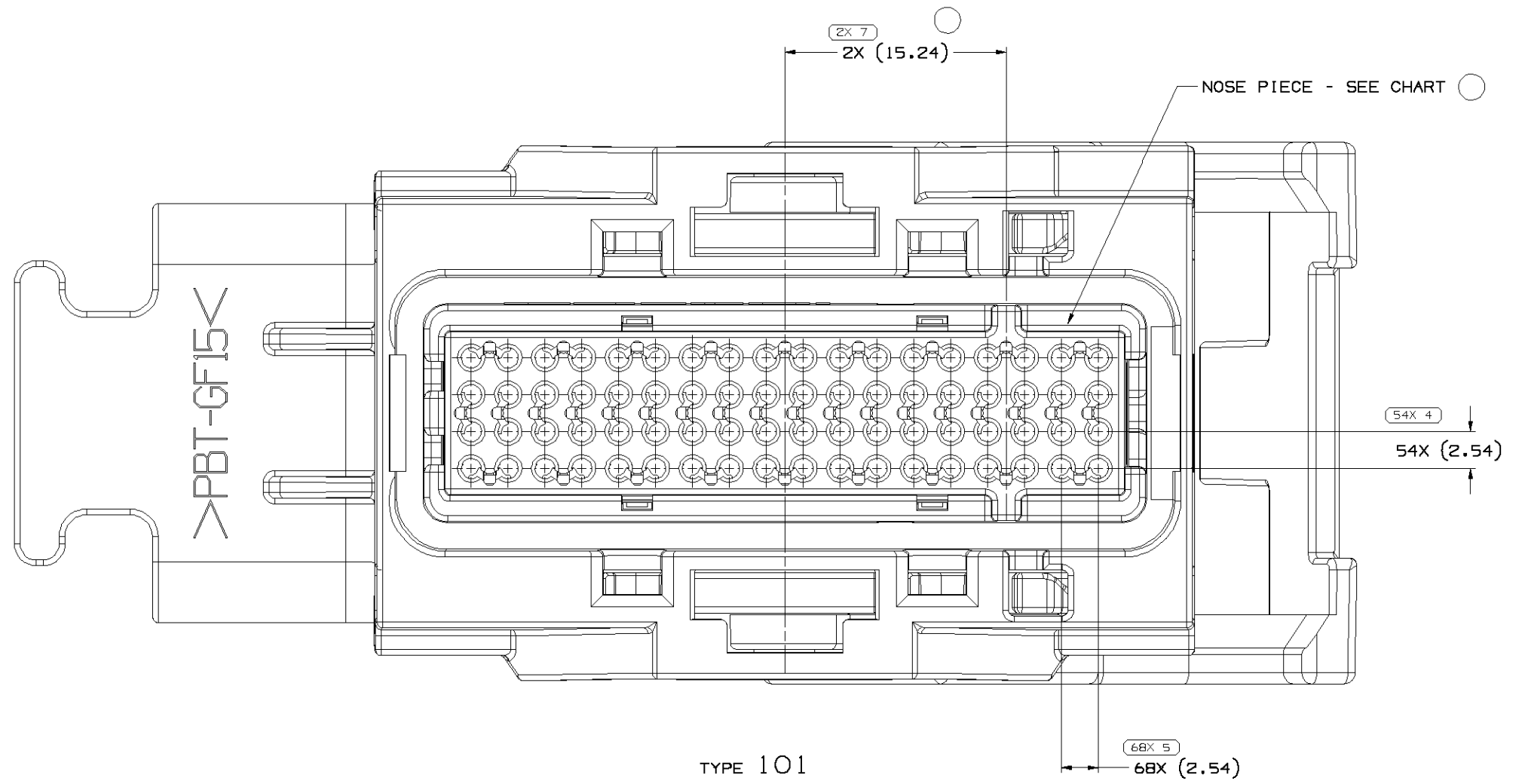
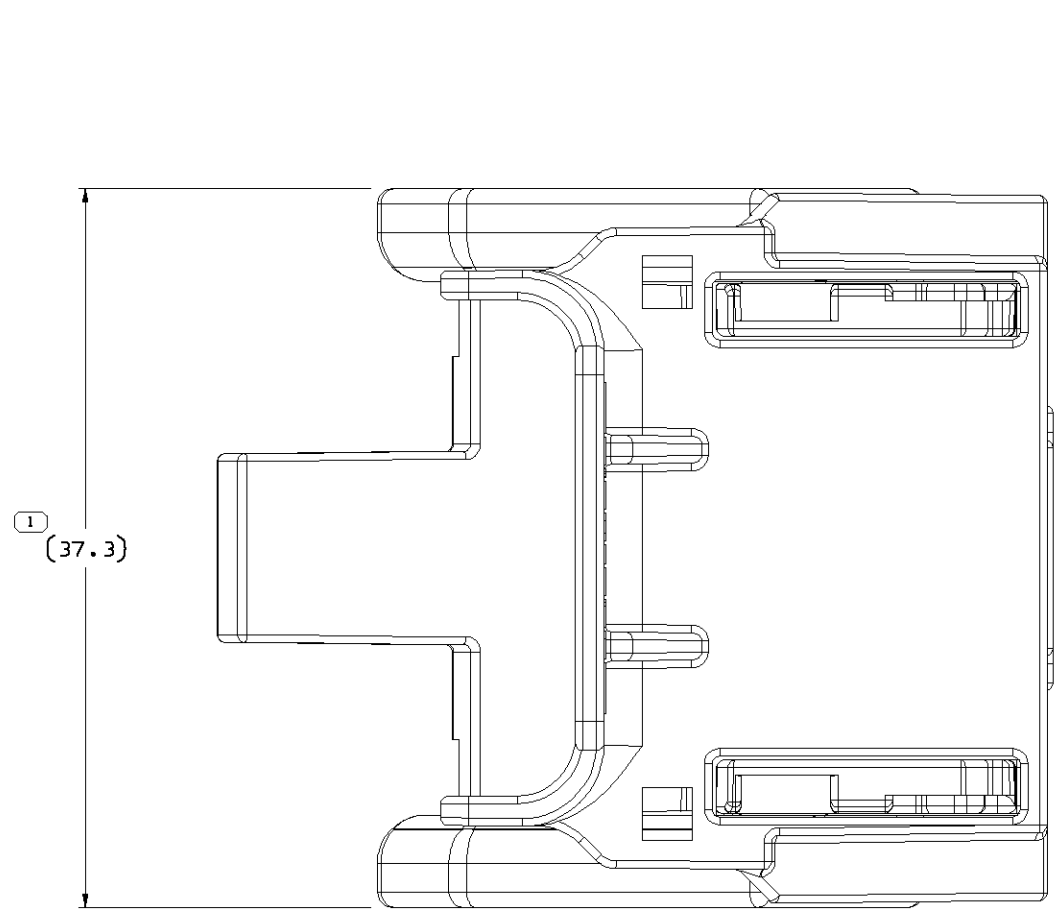
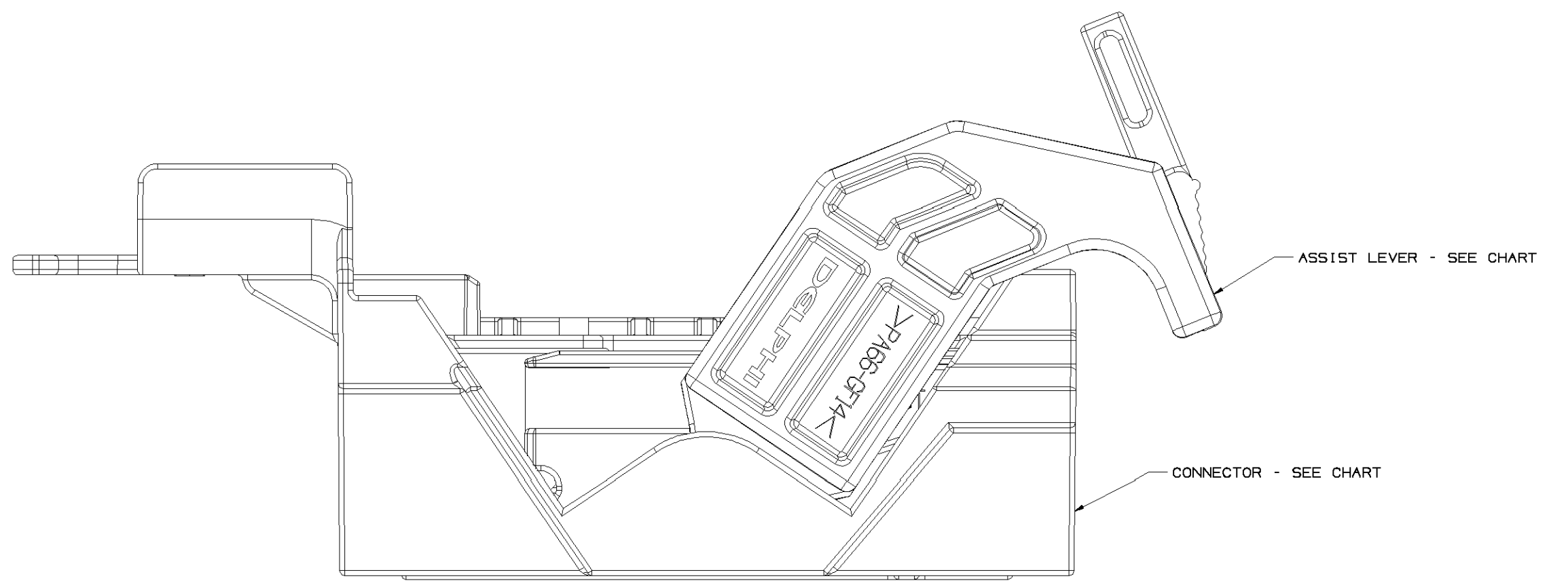


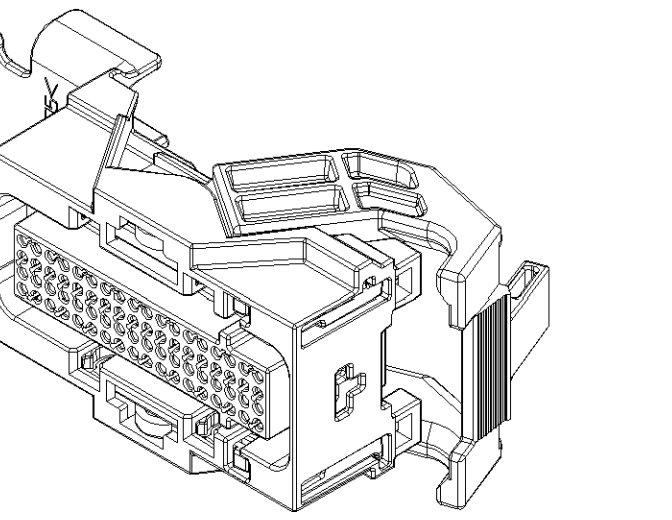
SYMBOL DEFINITION		MISSING SYMBOLS		REVISION HISTORY	
A DIMENSION WITHOUT AN INSPECTION REPORT SYMBOL DOES NOT REQUIRE INSPECTION. IT MAY BE CONTROLLED ON THE INDIVIDUAL COMPONENT DRAWING.	TOTAL NO. OF INSPECTIONS REQUIRED	NO MISSING SYMBOL NUMBER	DATE	REV	DESCRIPTION
	130	079005 R 01			ALL PARTS - WERE SEPERATE DRAWINGS
		079005 R 02			ALL PARTS - ADDED DIMS 12 PLCS & 10 COMPONENT LABELS; REVISED NOTES & CHRT
		260005 R 03			15393121 - NOSE PIECE WAS 15393124; 15393122 - NOSE PIECE WAS 15393125 AND REMOVED ISO VIEW; ALL PARTS - ADDED DIMS #6 & #7 AND REVISED CHARTS AND NOTES
	LAST NO. USED				
	7				



SLIDE CONNECTOR LOCK B - SEE CHART

NOTES

- UNLESS OTHERWISE SPECIFIED AND/OR INDICATED: DIMENSIONS ARE TO FACE OF VIEW SHOWN AND AUTOMATICALLY ROUNDED BY COMPUTER FOR INSPECTION (SEE MATH MODEL FOR PRECISE DIMENSIONS). FOR ALL OTHER DIMENSIONS NOT SHOWN BUT REQUIRED FOR TOOL BUILD, SEE MATH MODEL FOR PRECISE TOOL PATH DATA.
- SEALING CODE 0 - UNSEALED
- REFERENCE MATING COMPONENTS OR EQUIVALENT: SHROUD - SEE CHART
- ONLY TIN PLATED FEMALE TERMINALS SHOULD BE USED WHEN MATING TO TIN PLATED MALE PINS. GOLD PLATED FEMALE TERMINALS SHOULD ONLY BE USED WHEN MATING TO GOLD PLATED MALE PINS.
- ASSIST LEVER MUST BE IN PRE-STAGE LOCKED POSITION AS SHOWN. NOSE PIECE MUST BE IN FULLY LOCKED POSITION AS SHOWN.
- THIS PART ACCEPTS THE FOLLOWING MANDATORY COMPONENTS:
 - TERMINAL 15394147
 - MAX INSULATION CRIMP MUST BE LESS THAN 2 HIGH AND 2 WIDE.
 - SECONDARY TERMINAL LOCK 15393131
 - WIRE DRESS COVER 15393126
 - WIRE TIE M1842 (MAX WIDTH 4.8)



TYPE 101
VIEW SCALE DOES NOT REFLECT ACTUAL PART SIZE

TYPE 102
SAME AS TYPE 101 EXCEPT AS SHOWN

15449821

PART NO	REV	MP	TYPE	STATUS	NOSE PIECE	CONNECTOR	ASSIST LEVER	SLIDE LOCK A	SLIDE LOCK B	MATING CONNECTOR SHROUD DETAIL
15393122	02	-	102	-	15423640	15393123	15401488	15393130	15393129	15423165
15393121	02	-	101	-	15423639	15393123	15401488	15393130	15393129	15423165

DELPHI DELPHI INLAND ELECTRIC SYSTEMS BANGOR, MI	
PART TYPE: PART DRAWING TITLE: TAXI ASM CONN F MICRO 64 MODULAR DATE:	BY: HOLLY MEEKER APPROVED: HOLLY MEEKER CHECKED: BRIAN DEISLER DATE:
UNLESS OTHERWISE SPECIFIED: DIMENSIONS ARE IN MILLIMETERS AND TO 3 DECIMALS UNLESS OTHERWISE SPECIFIED. DIMENSIONS IN PARENTHESES ARE IN INCHES AND TO 2 DECIMALS UNLESS OTHERWISE SPECIFIED. DIMENSIONS IN PARENTHESES ARE IN INCHES AND TO 2 DECIMALS UNLESS OTHERWISE SPECIFIED. DIMENSIONS IN PARENTHESES ARE IN INCHES AND TO 2 DECIMALS UNLESS OTHERWISE SPECIFIED. DIMENSIONS IN PARENTHESES ARE IN INCHES AND TO 2 DECIMALS UNLESS OTHERWISE SPECIFIED. DIMENSIONS IN PARENTHESES ARE IN INCHES AND TO 2 DECIMALS UNLESS OTHERWISE SPECIFIED.	THIRD ANGLE PROJECTION DO NOT SCALE USE MATH DATA
PART NUMBER: 15449821 SCALE: 1:1 SHEET: 1 OF 2 REV: 01	DRAWING NUMBER: 15449821 TITLE: TAXI ASM CONN F MICRO 64 MODULAR DATE:

15804421