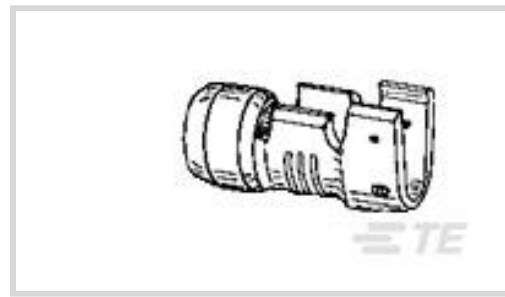




TE Internal #: 152476-1  
 Automotive Terminals, Socket, 19 – 14 AWG Wire Size, .7 – 2 mm<sup>2</sup>  
 Wire Size, Sealable, Single Wire Seal (SWS), Tin (Sn) Interface  
 Plating  
[View on TE.com >](#)

Terminals & Splices > Automotive Terminals



Terminal Type: **Socket**  
 Terminal Transmits: **0 – 24 A (Low Power)**  
 Wire Size: **.7 – 2 mm<sup>2</sup>**  
 Sealable: **Yes**

### Features

#### Product Type Features

Sealable	Yes
----------	-----

#### Body Features

Terminal Seal Type	Single Wire Seal (SWS)
--------------------	------------------------

#### Contact Features

Contact Size	4.7mm
Contact Fabrication	Stamped & Formed
Crimp Type	F-Crimp
Terminal Type	Socket
Interface Plating	Tin (Sn)

#### Termination Features

Termination Method to Wire & Cable	Crimp
Product Terminates To	Wire

#### Dimensions

Wire Size	.7 – 2 mm <sup>2</sup>
Wire Size Search	14 AWG, 15 AWG, 16 AWG, 17 AWG, 18 AWG, 19 AWG
Wire Insulation Diameter	3.68 mm

#### Usage Conditions

Insulation Option	Uninsulated
-------------------	-------------



### Operation/Application

Compatible With Wire Base Material	Copper
------------------------------------	--------

### Packaging Features

Packaging Method	Reel
Packaging Quantity	3000

### Other

Terminal Transmits	0 – 24 A (Low Power)
--------------------	----------------------

### Product Compliance

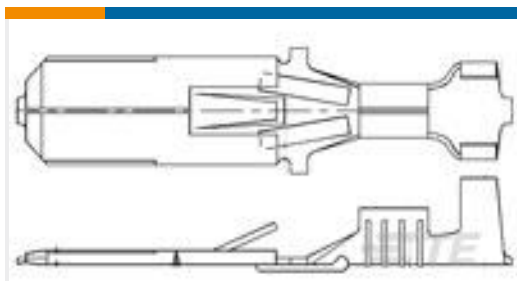
[For compliance documentation, visit the product page on TE.com>](#)

EU RoHS Directive 2011/65/EU	Compliant
EU ELV Directive 2000/53/EC	Compliant
China RoHS 2 Directive MIIT Order No 32, 2016	No Restricted Materials Above Threshold
EU REACH Regulation (EC) No. 1907/2006	Current ECHA Candidate List: JUNE 2022 (224) Candidate List Declared Against: JAN 2022 (223) SVHC > Threshold: Not Yet Reviewed
Halogen Content	Low Halogen - Br, Cl, F, I < 900 ppm per homogenous material. Also BFR/CFR/PVC Free
Solder Process Capability	Not applicable for solder process capability

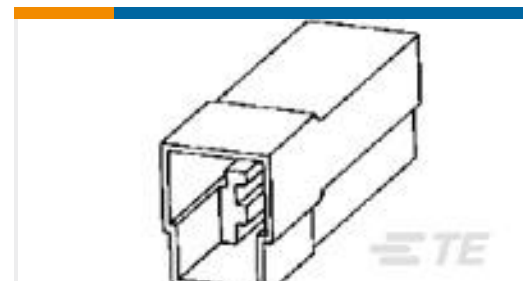
#### Product Compliance Disclaimer

This information is provided based on reasonable inquiry of our suppliers and represents our current actual knowledge based on the information they provided. This information is subject to change. The part numbers that TE has identified as EU RoHS compliant have a maximum concentration of 0.1% by weight in homogenous materials for lead, hexavalent chromium, mercury, PBB, PBDE, DBP, BBP, DEHP, DIBP, and 0.01% for cadmium, or qualify for an exemption to these limits as defined in the Annexes of Directive 2011/65/EU (RoHS2). Finished electrical and electronic equipment products will be CE marked as required by Directive 2011/65/EU. Components may not be CE marked. Additionally, the part numbers that TE has identified as EU ELV compliant have a maximum concentration of 0.1% by weight in homogenous materials for lead, hexavalent chromium, and mercury, and 0.01% for cadmium, or qualify for an exemption to these limits as defined in the Annexes of Directive 2000/53/EC (ELV). Regarding the REACH Regulation, the information TE provides on SVHC in articles for this part number is based on the latest European Chemicals Agency (ECHA) 'Guidance on requirements for substances in articles' posted at this URL: <https://echa.europa.eu/guidance-documents/guidance-on-reach>

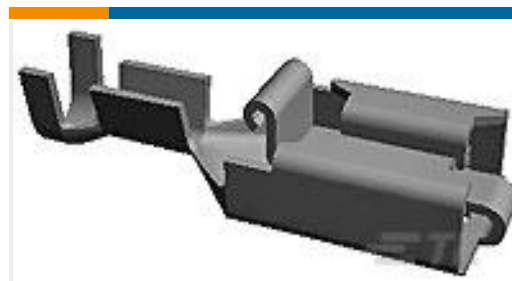
### Customers Also Bought



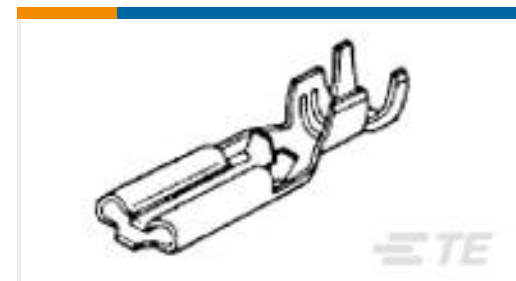
TE Part #42241-1  
FF 250 TAB 18-16AWG BR



TE Part #926097-1  
FF 250 TAB HSG 3P NYLON NAT



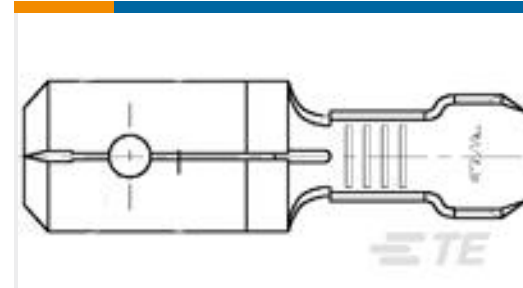
TE Part #154718-6  
250 PL MKI REC. 18-14AWG PTPB



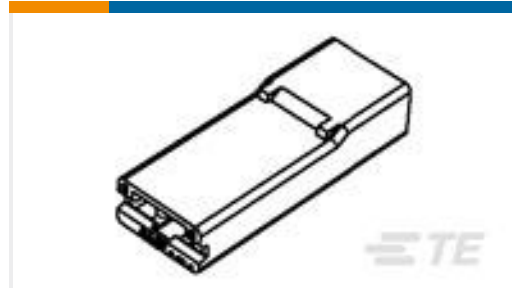
TE Part #174777-1  
PL 110 REC 20-16 AWG 0.25 X 10.4  
PTBR



TE Part #776531-1  
AS 16, 6P PLUG ASSY, RD, KEY 1



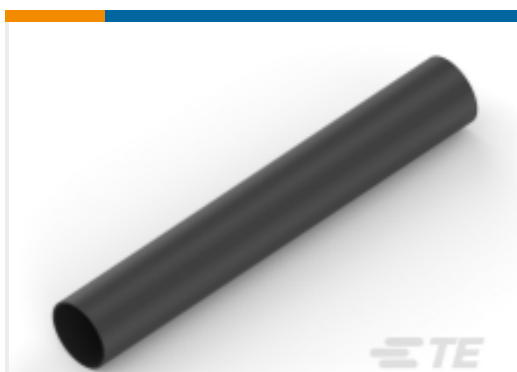
TE Part #42474-4  
250 FASTON TAB 18-14 AWG TPBR



TE Part #735075  
250 FASTON HSG. REC. 1P CLEAR



TE Part #500004-1  
SPIRAP 1/4" FR PE, WHITE, 50FT



TE Part #NB10114001  
ATUM-24/6-0-SP



TE Part #NB11234001  
ATUM-40/13-0-SP

## Documents

### Product Drawings

[SIDE FEED G.B.BULLET.](#)

English

### CAD Files

[3D PDF](#)

3D

Customer View Model

[ENG\\_CVM\\_CVM\\_152476-1\\_M.2d\\_dxf.zip](#)

English

Customer View Model

[ENG\\_CVM\\_CVM\\_152476-1\\_M.3d\\_igs.zip](#)

English

Customer View Model

[ENG\\_CVM\\_CVM\\_152476-1\\_M.3d\\_stp.zip](#)

English

By downloading the CAD file I accept and agree to the [Terms and Conditions](#) of use.