

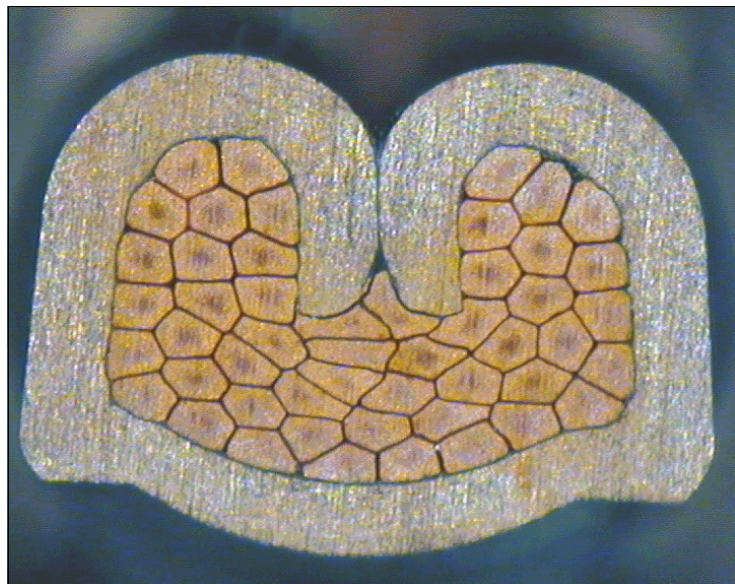
DELPHI PN 15494340



cable:
 $1,50 \text{ mm}^2 = 30 \times 0,26 \text{ mm}$

crimp height:
1,60 mm

crimp width:
2,60 mm



cable:
 $2,50 \text{ mm}^2 = 50 \times 0,26 \text{ mm}$

crimp height:
1,90 mm

crimp width:
2,60 mm