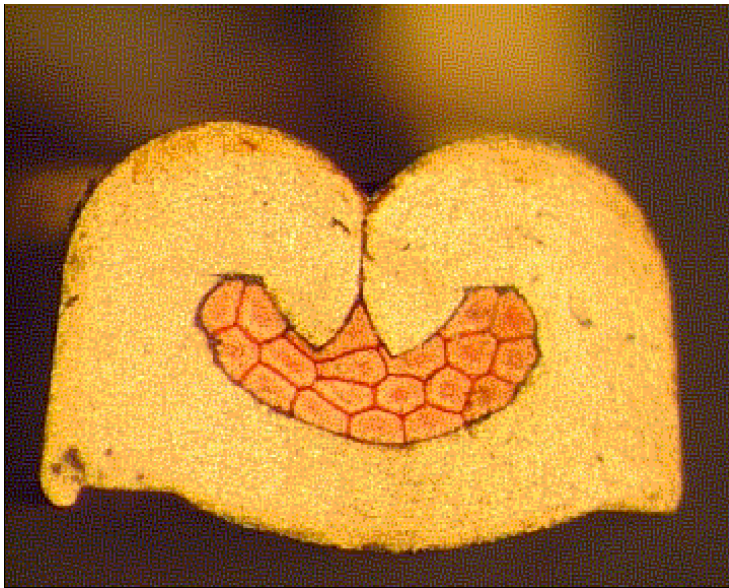


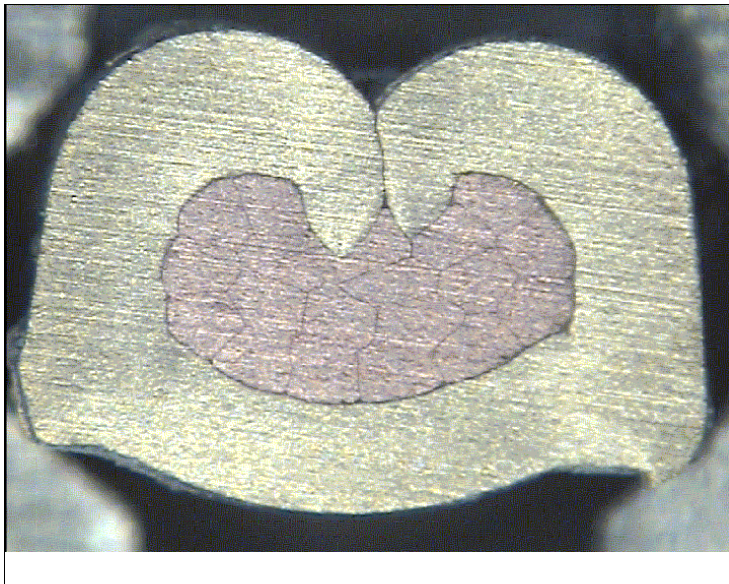
DELPHI PN 15344635



cable:
 $0,50 \text{ mm}^2 = 19 \times 0,19 \text{ mm}$

crimp height:
1,40 mm

crimp width:
2,30 mm



cable:
 $1,00 \text{ mm}^2 = 19 \times 0,27 \text{ mm}$

crimp height:
1,60 mm

crimp width:
2,30 mm