



Positive Lock | Positive Lock 250

TE Internal #: 154719-2

Crimp Terminal Housings, Receptacle, Receptacle, 1 Position, Straight, UL 94V-2, Red, Polyamide 6.6 GF, Mating Alignment, Positive Lock 250

[View on TE.com >](#)

Terminals & Splices > Terminal Housings, Insulation Sleeves & Blocks > Crimp Terminal Housings



Terminal Type: **Receptacle**

Housing Type: **Receptacle**

Number of Positions: **1**

Terminal Orientation: **Straight**

UL Flammability Rating: **UL 94V-2**

**Features**

**Product Type Features**

Terminates To	Wire & Cable
Product Type	Terminal Housing
Sealable	No
Connector System	Wire-to-Board, Wire-to-Wire
Housing Type	Receptacle
Insulated	No

**Configuration Features**

Number of Positions	1
---------------------	---

**Body Features**

Primary Product Color	Red
-----------------------	-----

**Contact Features**

Terminal Type	Receptacle
Terminal Orientation	Straight
Contact Mating Retention	Without



### Mechanical Attachment

Mating Alignment Type	Polarization
Mating Alignment	With
Crimp Terminal Housing Mounting Style	Cable Mount (Free-Hanging)

### Housing Features

Housing Material	Polyamide 6.6 GF
------------------	------------------

### Dimensions

Length	24.26 mm[.96 in]
--------	------------------

### Usage Conditions

Operating Temperature Range	-40 – 105 °C[-40 – 221 °F]
-----------------------------	----------------------------

### Operation/Application

For Use With	250 Series
--------------	------------

### Industry Standards

UL Flammability Rating	UL 94V-2
------------------------	----------

### Packaging Features

Packaging Quantity	6000
--------------------	------

## Product Compliance

[For compliance documentation, visit the product page on TE.com>](#)

EU RoHS Directive 2011/65/EU	Compliant
EU ELV Directive 2000/53/EC	Compliant
China RoHS 2 Directive MIIT Order No 32, 2016	No Restricted Materials Above Threshold
EU REACH Regulation (EC) No. 1907/2006	Current ECHA Candidate List: JUNE 2022 (224) Candidate List Declared Against: JAN 2022 (223) SVHC > Threshold: Not Yet Reviewed
Halogen Content	BFR/CFR/PVC Free, but Br/Cl >900 ppm in other sources.
Solder Process Capability	Not applicable for solder process capability

#### Product Compliance Disclaimer

This information is provided based on reasonable inquiry of our suppliers and represents our current actual knowledge based on the information they provided. This information is subject to change. The part numbers that TE has identified as

EU RoHS compliant have a maximum concentration of 0.1% by weight in homogenous materials for lead, hexavalent chromium, mercury, PBB, PBDE, DBP, BBP, DEHP, DIBP, and 0.01% for cadmium, or qualify for an exemption to these limits as defined in the Annexes of Directive 2011/65/EU (RoHS2). Finished electrical and electronic equipment products will be CE marked as required by Directive 2011/65/EU. Components may not be CE marked. Additionally, the part numbers that TE has identified as EU ELV compliant have a maximum concentration of 0.1% by weight in homogenous materials for lead, hexavalent chromium, and mercury, and 0.01% for cadmium, or qualify for an exemption to these limits as defined in the Annexes of Directive 2000/53/EC (ELV). Regarding the REACH Regulation, the information TE provides on SVHC in articles for this part number is based on the latest European Chemicals Agency (ECHA) 'Guidance on requirements for substances in articles' posted at this URL: <https://echa.europa.eu/guidance-documents/guidance-on-reach>

## Compatible Parts



TE Part # 154718-3  
PL 250 REC 0.7-2.0 MM2 0.406 TPBR



TE Part # 63812-1  
250 PL MKI REC. 18-14AWG TPBR



TE Part # 154717-3  
PL 250 REC TERMINAL 14-11 AWG TPBR



TE Part # 790319-3  
250 PL MKI REC. 12-10AWG PTBR



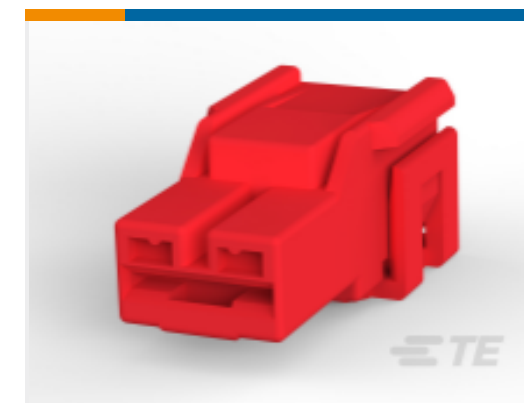
TE Part # 926646-1  
PL 250 REC HSG 8P NYLON BLACK



TE Part # 1-160759-1  
250 PL MKI REC. 20-15AWG PTBR



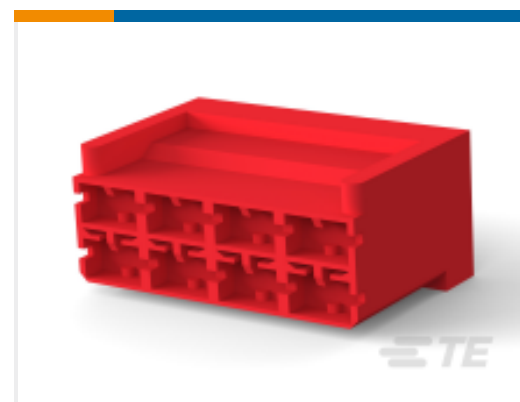
TE Part # 926646-8  
PL 250 8P HOUSING PA.6.6 ZYTEL 101 WHITE



TE Part # 172863-8  
250 P.LOCK MK-II 1P HSG RED



TE Part # 926646-3  
PL 250 8P HOUSING PA6.6 ZYTEL 101NATURAL



TE Part # 926646-4  
8P POS-LOCK GEH 6,3

## Also in the Series | Positive Lock 250



Automotive Terminals(1)



Crimp Terminal Housings(203)



Insertion & Extraction Tools(3)

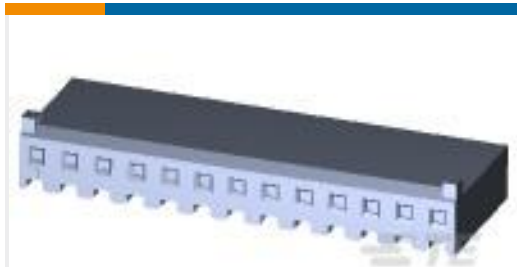
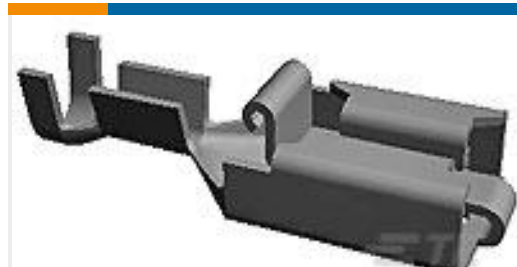
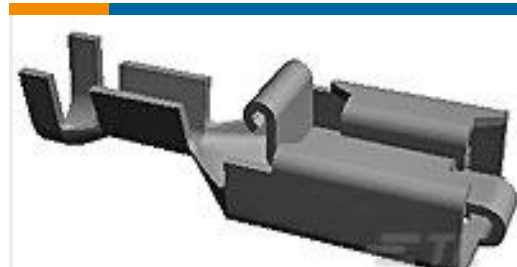
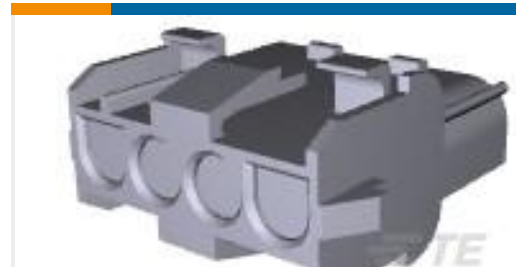
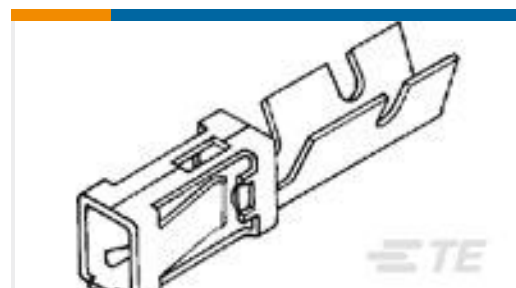
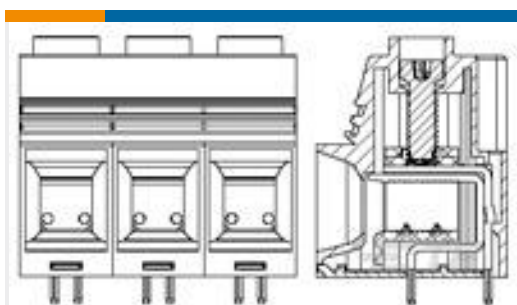


Insulation Boots & Sleeves(4)



Quick Disconnects(189)

## Customers Also Bought

TE Part #1-770849-3  
13P SL156 HSG W/LCK RMP & TABSTE Part #341002-6  
PL 250 REC TERMINAL 18-14 PTPB LPTE Part #928901-3  
PL 250 REC TERMINAL 17-13 AWG  
TPBR LPTE Part #926305-7  
4P UNIV M-N-L CAPTE Part #926476-6  
MOD 4 HSGTE Part #HDP24-24-19SE  
DEUTSCH HDP20 HOUSINGSTE Part #5-103957-7  
2X8 MTE RCPT SR LATCH .100CLTE Part #102100-1  
MOD I RECP PLTD 15 SELTE Part #1986242-4  
Power Connector, 15.0mm, Green, 4  
posn

## Documents

### Product Drawings

[PL 250 REC HSG 1P NYLON RED](#)

English

### CAD Files

[3D PDF](#)

3D

[Customer View Model](#)

[ENG\\_CVM\\_CVM\\_154719-2\\_AV.2d\\_dxf.zip](#)



English

**Customer View Model**

[ENG\\_CVM\\_CVM\\_154719-2\\_AV.3d\\_igs.zip](#)

English

**Customer View Model**

[ENG\\_CVM\\_CVM\\_154719-2\\_AV.3d\\_stp.zip](#)

English

By downloading the CAD file I accept and agree to the [Terms and Conditions](#) of use.

---

**Product Specifications**

[Application Specification](#)

English

---

**Product Environmental Compliance**

[TE Material Declaration](#)

English

---

**Instruction Sheets**

[Instruction Sheet \(U.S.\)](#)

English