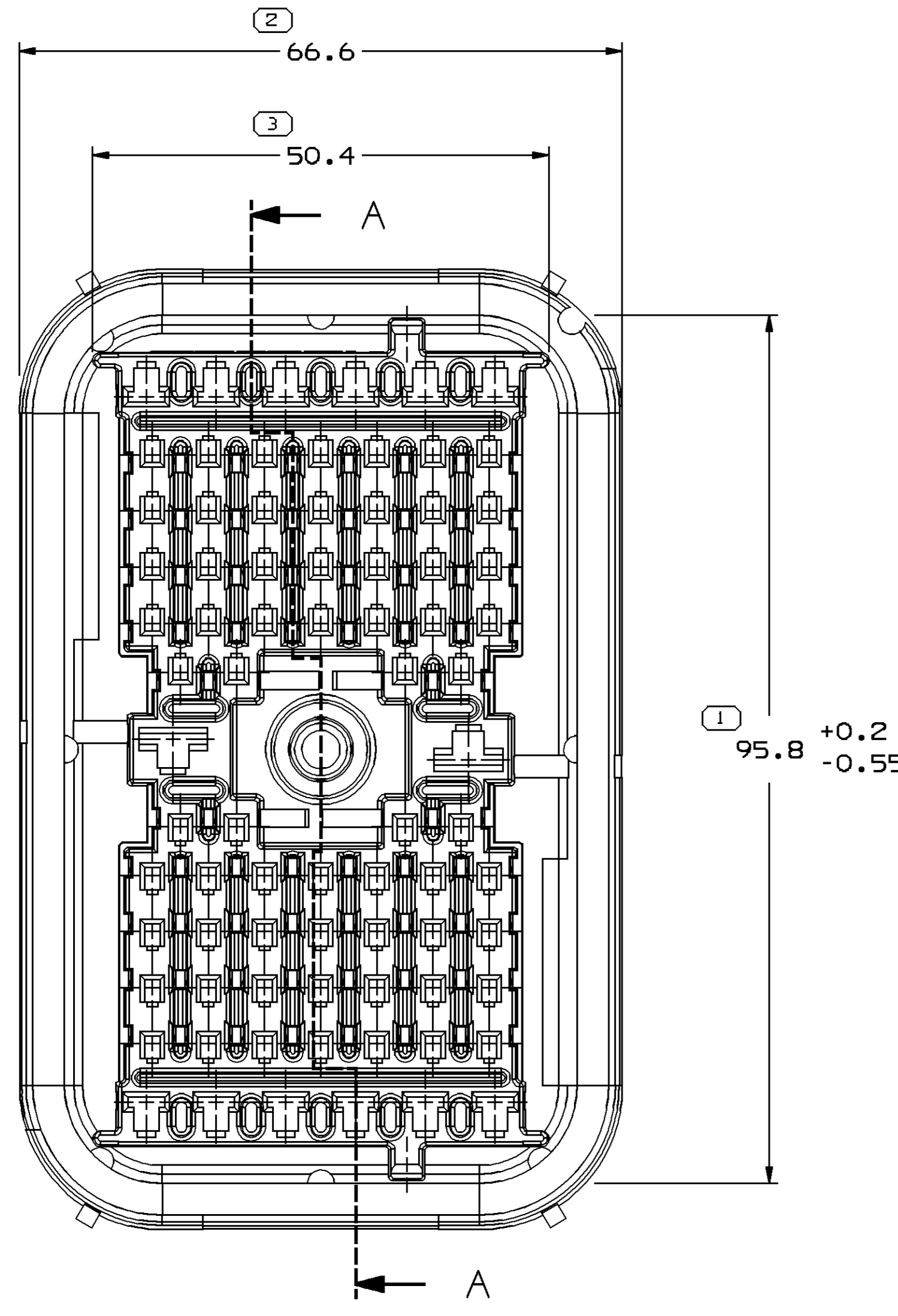
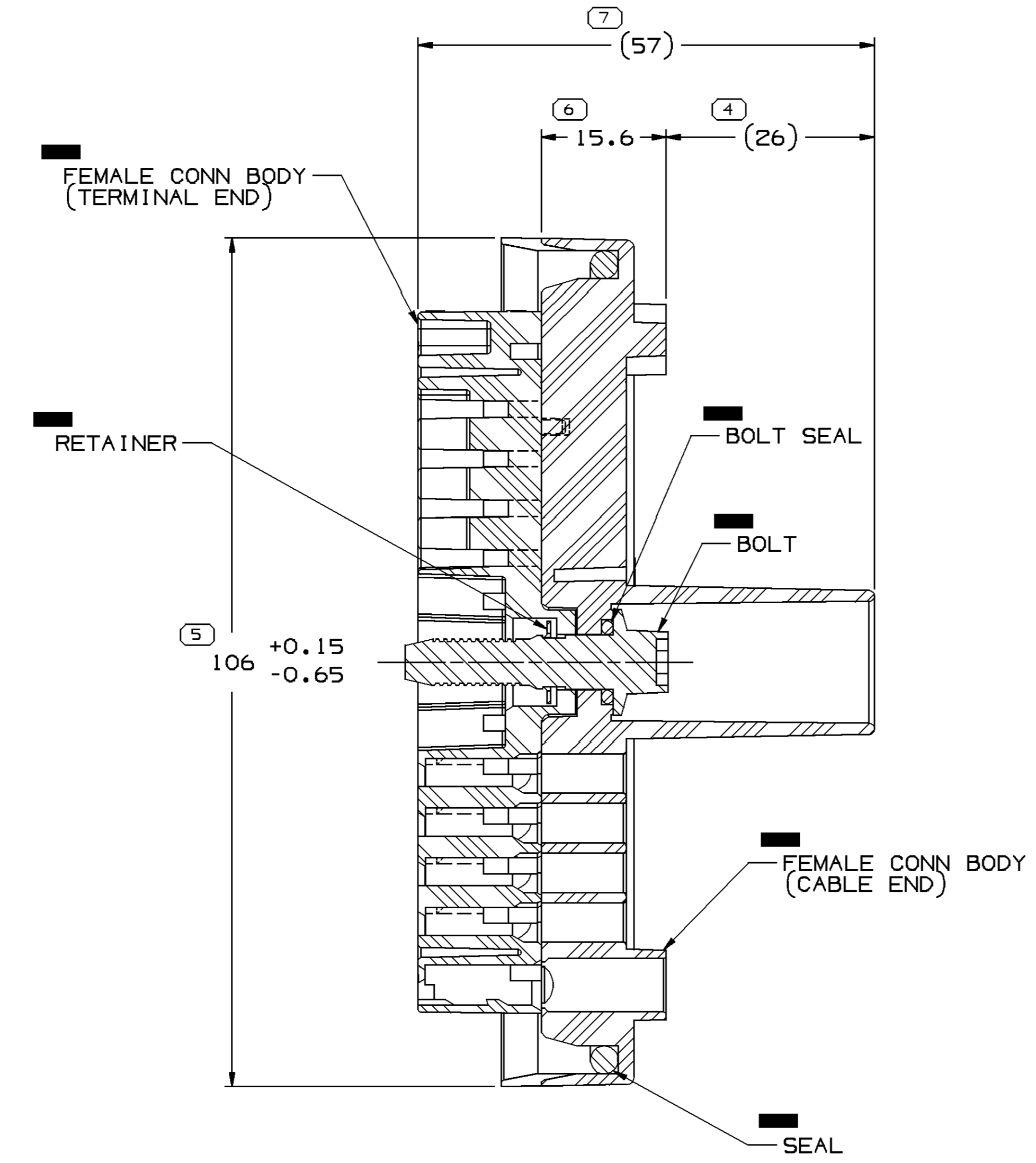


SYMBOL DEFINITION		MISSING SYMBOLS	
A DIMENSION WITHOUT AN INSPECTION REPORT SYMBOL ( ) DOES NOT REQUIRE INSPECTION. IT MAY BE CONTROLLED ON THE INDIVIDUAL COMPONENT DRAWING.	TOTAL NO OF INSPECTIONS REQUIRED	7	NO MISSING SYMBOL NUMBER
	LAST NO. USED	7	

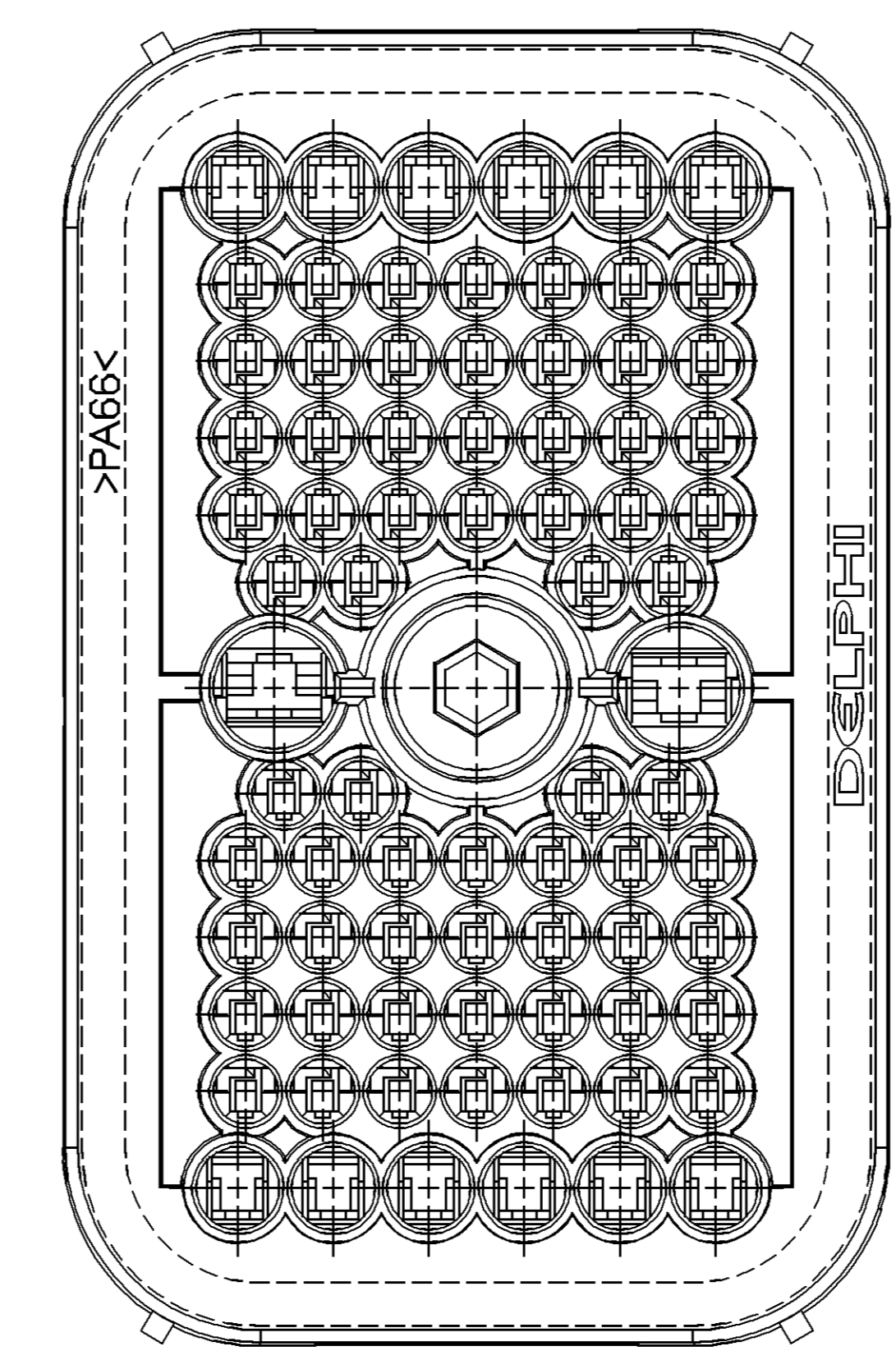
Dwg STATUS				REVISION HISTORY				AUTH		DR		AP/D	
DATE	STG	REV	N/P	CHG	ZONE								
27SE04	R	02	-	-		CLEARED REVISION COLUMN, REDRAWN TO PD, 12129206 & 12176628 - RESTRICTED				255957	6PS	JVM	MGR
15N004	R	03	-	-		DIMENSIONS, (57) WAS 57 ±0.15 AND (26) WAS 26 ±0.15				261074	6PS	JVM	BDG
03AP06	R	04	-	-		12129206 - OBSOLETE AND ADDED REPLACED BY COLUMN				278753	CCV	JVM	RMD



TERMINAL END



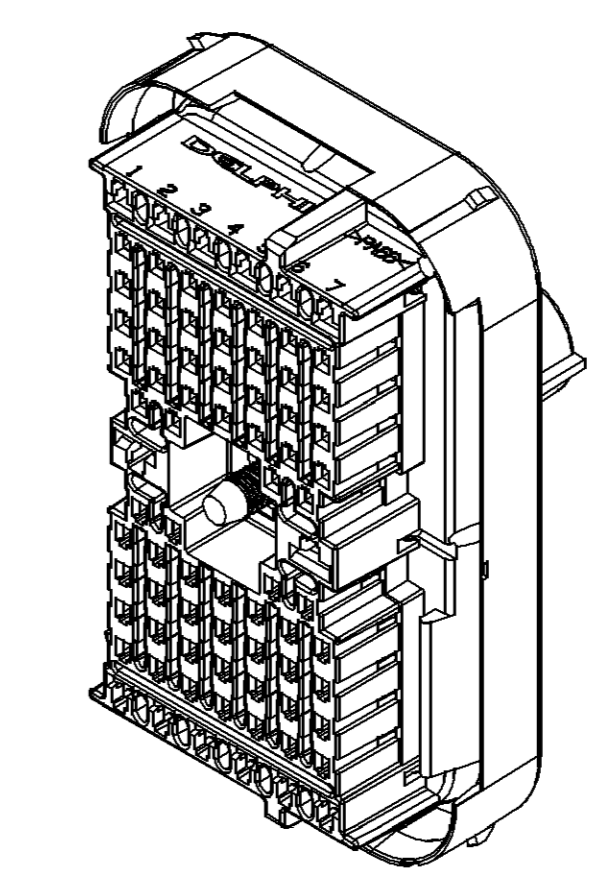
SECTION A - A



CABLE END

NOTES

- UNLESS OTHERWISE SPECIFIED AND/OR INDICATED:  
DIMENSIONS ARE TO FACE OF VIEW SHOWN AND AUTOMATICALLY ROUNDED BY COMPUTER FOR INSPECTION (SEE MATH MODEL FOR PRECISE DIMENSIONS). FOR ALL OTHER DIMENSIONS NOT SHOWN BUT REQUIRED FOR TOOL BUILD, SEE MATH MODEL FOR PRECISE TOOL PATH DATA.
- THIS ASSEMBLY IS TO BE BOLTED TO 12129621 CONNECTOR WITH A TORQUE ON THE BOLT OF 5.6 NM TO 7.9 NM.
- RETAINER MUST WITHSTAND A MINIMUM FORCE OF 890 N APPLIED AXIALLY TO THE THREADED END OF THE BOLT.
- REFERENCE MATING COMPONENTS OR EQUIVALENT:  
SHROUD 12129210
- THIS PART ACCEPTS THE FOLLOWING COMPONENTS OR EQUIVALENT:  
SECONDARY LOCK COMB 12129214  
CAVITIES A1, A2, A3, A5, A6, A7, N1, N2, N3, N5, N6 & N7 TO ACCEPT 280 SERIES TERMINAL 12077412  
CAVITIES 61 & 67 TO ACCEPT 630 SERIES TERMINAL 12052455  
ALL OTHER CAVITIES INCLUDING CAVITIES F1, F2, F6, F7, H1, H2, H6 & H7 TO ACCEPT 150 SERIES TERMINAL 12048074
- THIS PART IS NOT CONTROLLED FOR AUTOMATIC FEEDING.
- THE BOLT IS TO BE FREE TO TURN AFTER ASSEMBLY.
- TERMINAL RETENTION IS TO BE 67 N.
- WHEN PARTS ARE SHIPPED THEY MUST BE PACKED IN PLASTIC LINED CONTAINERS.
- SEALING CODE 3 - DESIGN WILL PASS SALT FOG AND IMMERSION TEST AFTER CONDITIONING AS SPECIFIED IN ESA-644 (WEATHER-PACK), ESA-710 (METRI-PACK), ESA-650 (UNDERHOOD MICRO-PACK), C-4006 (WORLD CONNECTOR), ETC WHEN MATED TO MATING PART OR EQUIVALENT
- DIMENSIONS NOT INDICATED BY "■" DO NOT REQUIRE INSPECTION AND ARE FOR REFERENCE ON THIS DRAWING THESE DIMENSIONS MAY BE CONTROLLED ON THE INDIVIDUAL COMPONENT DRAWING.



PART NO	REV	N/P	STATUS	FEM. CONN BODY (CABLE END)	FEM. CONN. BODY (TERMINAL END)	SEAL	BOLT	BOLT SEAL	RETAINER	REPLACED BY
15492601	01	AA	RESTRICTED	12129208	12129207	12129209	15492568	12064838	15492512	-
12176628	A3	-	RESTRICTED	12129208	12129207	12129209	12176624	12064838	12004737	-
12129206	C7	-	OBSOLETE	12129208	12129207	12129209	12065852	12064838	12004737	15492601

DIMENSIONAL RANGE (MM)		TOLERANCE UNLESS OTHERWISE SPECIFIED		ANGULAR TOLERANCE DEG	
FROM	TO	±	°	±	°
> 0	> 30	±0.15	±0.2	±1	±1.2
> 30	> 70	±0.2	±0.4	±1	±1.2
> 70	> 100	±0.3	±0.5	±1	±1.2
> 100	> 150	±0.4	±0.6	±1	±1.2
> 150	> 200	±0.5	±0.8	±1	±1.2
> 200	> 250	±0.6	±1.0	±1	±1.2
> 250	> 300	±0.8	±1.2	±1	±1.2
> 300	> 400	±1.0	±1.5	±1	±1.2

**DELPHI**  
DELPHI PACKARD ELECTRIC SYSTEMS  
WARREN, OH

DR	DATE
APV01 RON BURNS	21NOV94
APV02 RON BURNS	21NOV04
APV03 RON BURNS	21NOV04
APV04	
APV05	

ALL DIMENSIONS ARE IN MILLIMETERS

DRAWING NAME: TAXI ASM CONN F M/P 150  
280 630 SLD MODULAR

DRAWING NUMBER: 12176627

SCALE: 2:1  
SHEET NO: 1 OF 1  
REV: R 04