

Crimp - Validation

DELPHI

product: DELPHI PN 15344729
 material: CUSN4F48
 surface: SN
 material thickness: 0,32 mm
 cross section [mm²]: 0,5 | 0,75 | 1,0 | 1,5

 strip length: 4,00 mm
 cable type: FLRY-B
 insulation ø [mm]: 1,40 - 2,40
 seal: DPN 15324974 (0,5)
 DPN 15324976

**Uncontrolled
Copy**
For Information only!

conductor dimension					crimp dimension [mm]					
cable type	cross sect. [mm²]	struct. n x d [mm]	insul. diam. [mm]	tear-out force [N]	core		insulation			
					height ± 0,05	width ± 0,10	height ± 0,10	width ± 0,10	height ± tol.	width ± tol.
FLRY-B	0,5	16 x 0,21	1,50	80	1,30	2,10	4,00	4,10		
FLRY-B	0,75	24 x 0,21	1,80	120	1,40	2,10	4,10	4,10		
FLRY-B	1,0	32 x 0,21	2,00	160	1,50	2,10	4,20	4,15		
FLRY-B	1,5	30 x 0,26	2,30	200	1,60	2,10	4,30	4,15		

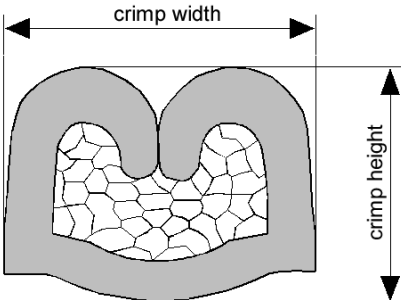
core:
 C-2.00-3.0-15
 DPN 10713694

insulation:
 IS-4.00-3.0-12-X GD 66,5
 DPN 10713788

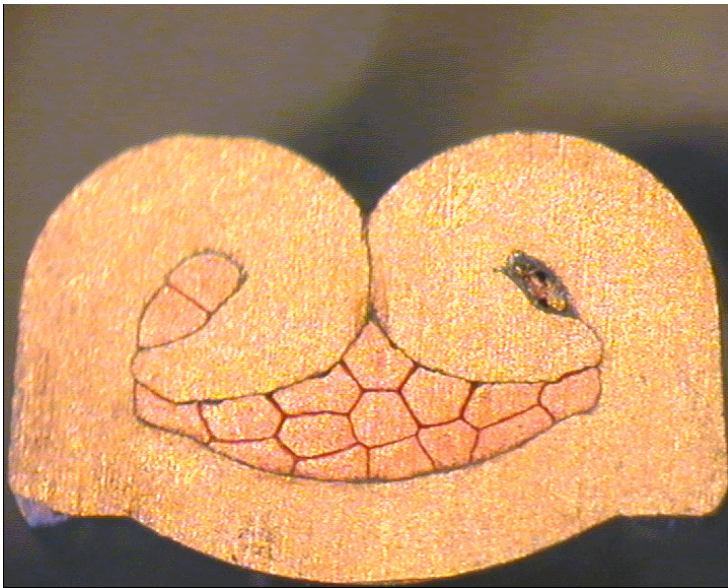
anvil:
 ASR-2.00-4.00-8.1-3.5-1.0
 DPN 10714041

two piece anvil:

0,5 mm²: Validation mets all performance requirements but may deviate slightly from standard internal wing position guidelines.



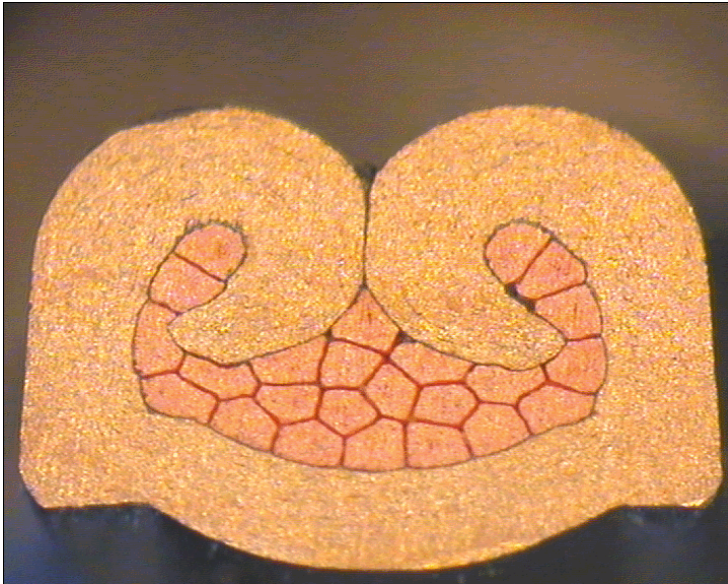
DELPHI PN 15344729



cable:
 $0,50 \text{ mm}^2 = 16 \times 0,21 \text{ mm}$

crimp height:
1,30 mm

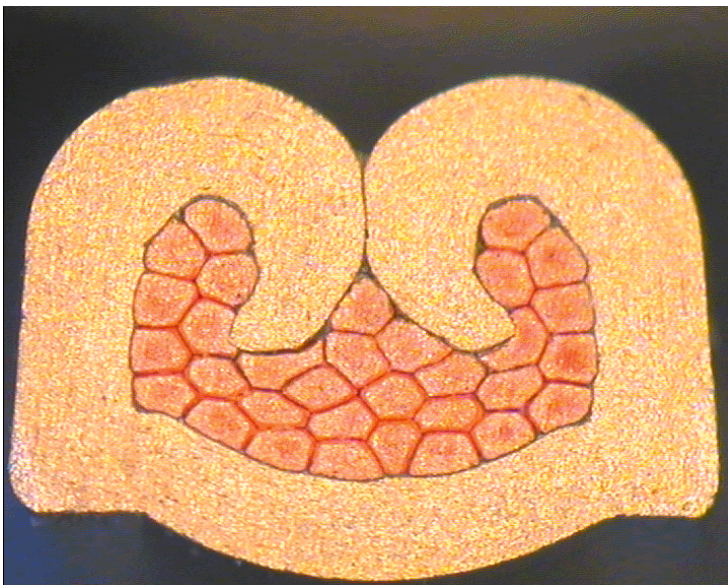
crimp width:
2,10 mm



cable:
 $0,75 \text{ mm}^2 = 24 \times 0,21 \text{ mm}$

crimp height:
1,40 mm

crimp width:
2,10 mm

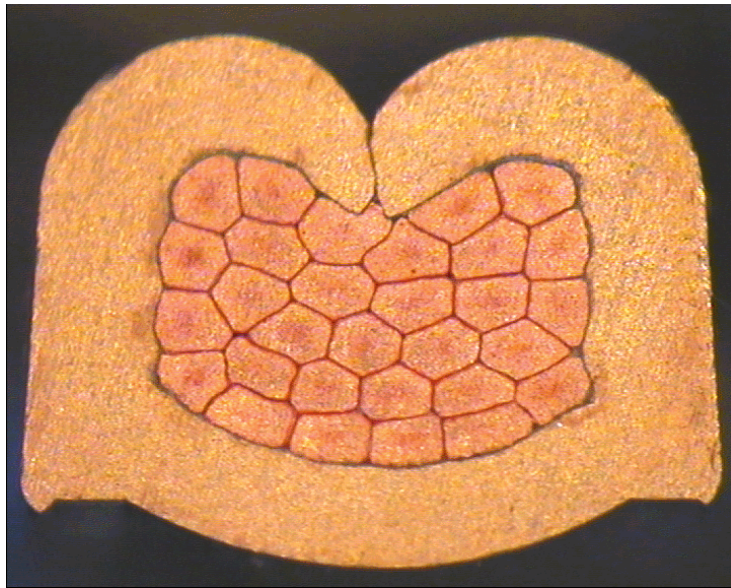


cable:
 $1,00 \text{ mm}^2 = 32 \times 0,21 \text{ mm}$

crimp height:
1,50 mm

crimp width:
2,10 mm

DELPHI PN 15344729



cable:

1,50 mm² = 30 x 0,26 mm

crimp height:

1,60 mm

crimp width:

2,10 mm