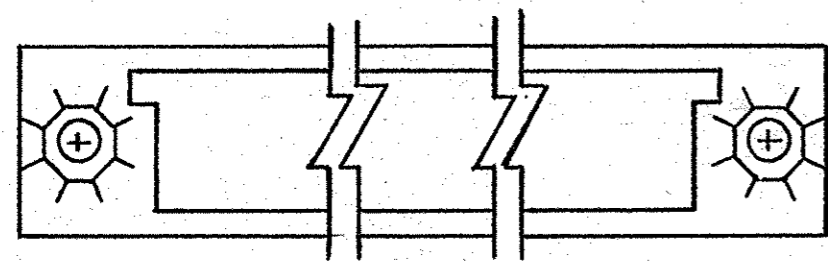
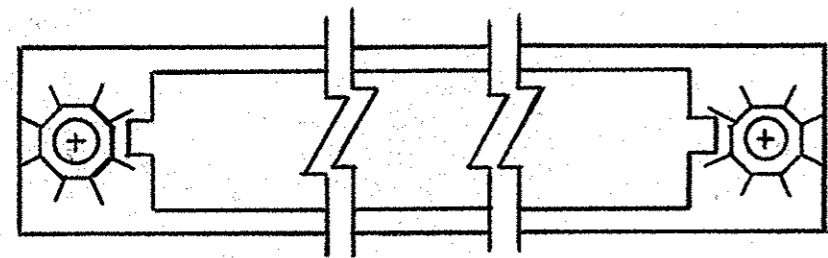


© COPYRIGHT 19 BY AMP INCORPORATED, HARRISBURG, PA. ALL INTERNATIONAL RIGHTS RESERVED. AMP INCORPORATED PRODUCTS COVERED BY U. S. AND FOREIGN PATENTS AND/OR PATENTS PENDING.

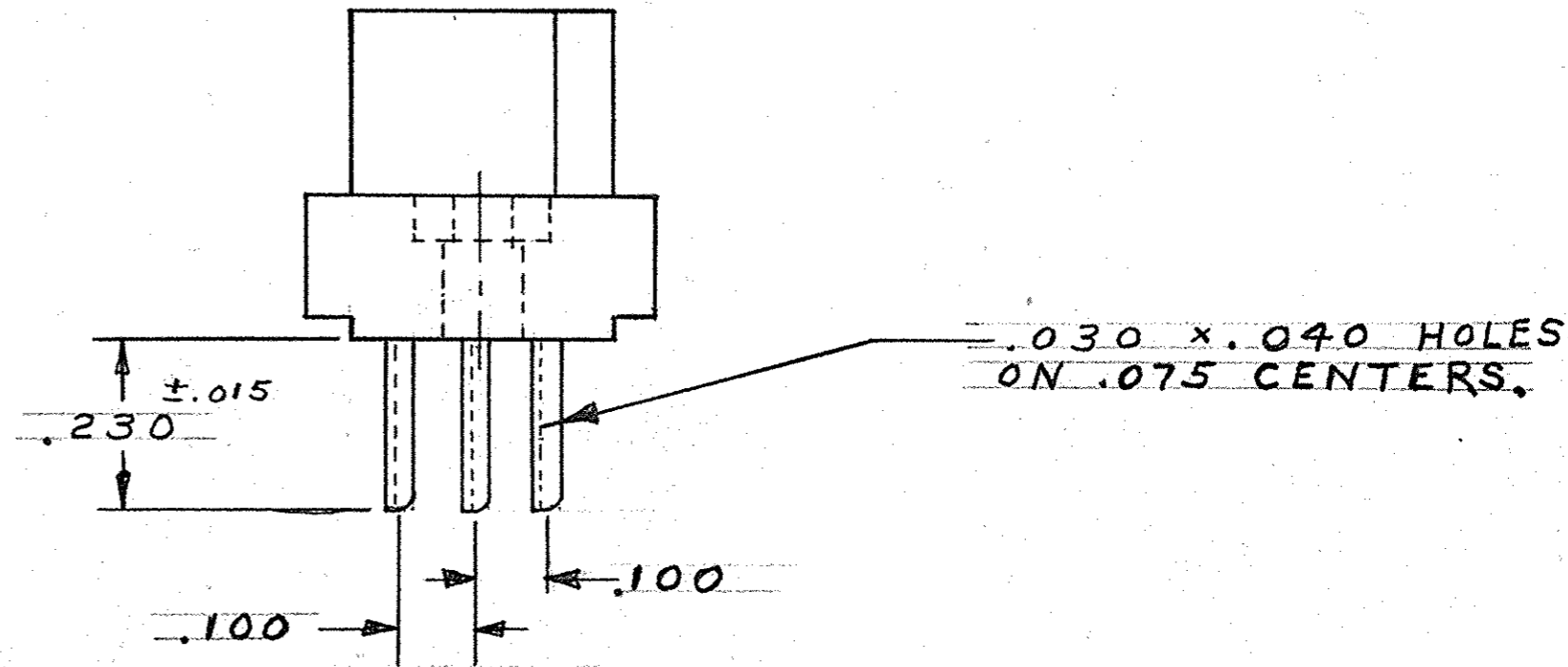
REVISIONS				DATE	APPROVED
P	F	ZONE	LTR		
DESCRIPTION					
H. [SEE SHEET 1 J					



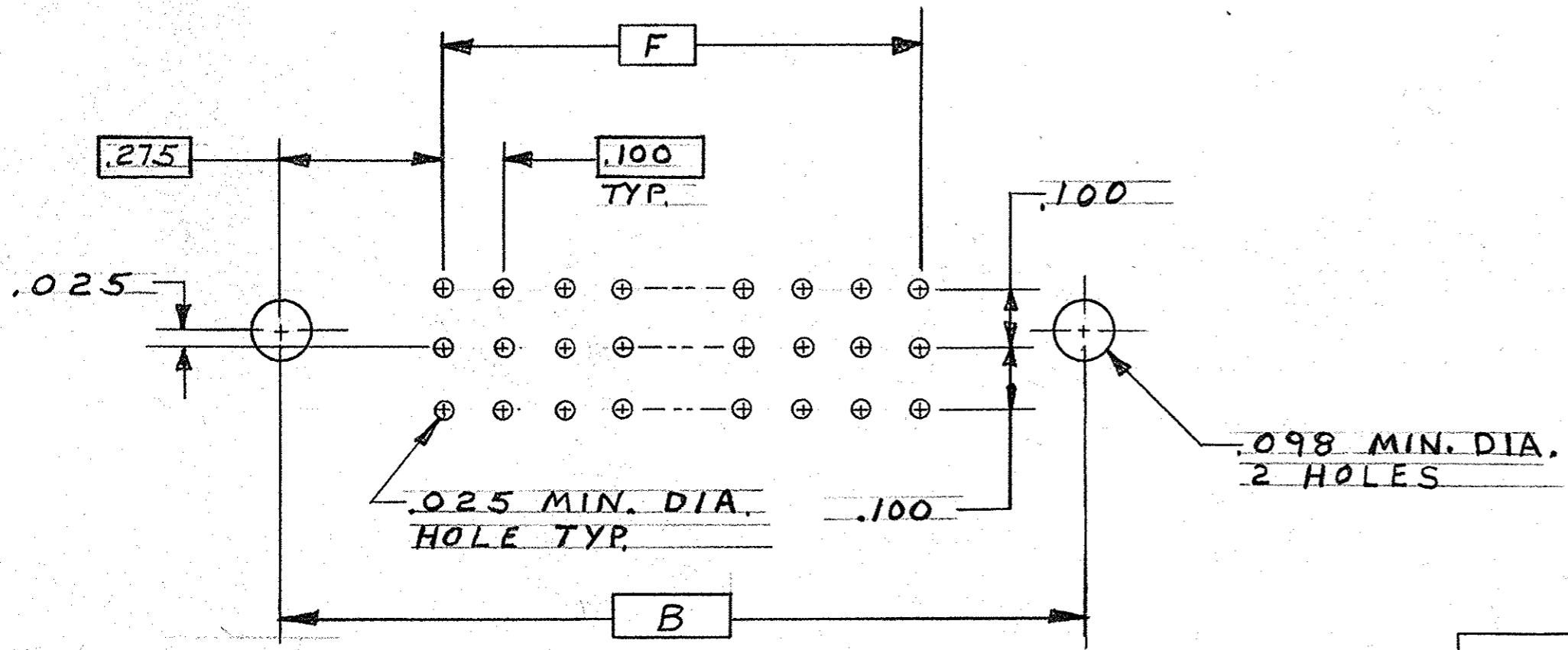
TYPE I



TYPE IV



3 HOLE SOLDER EYELET CONTACT
3 ROW -4, -5, -7, -8, -9



RECOMMENDED P.C. BOARD LAYOUT
FOR FLOW SOLDER CONNECTORS

UNLESS OTHERWISE SPECIFIED DIMENSIONS ARE IN INCHES. TOLERANCES ON: DECIMALS ±.005 ANGLES ±		CONTRACT NO 2-14-80	AMP INCORPORATED Harrisburg, Pa.	
MATERIAL	DR <i>M. Smith</i>	CHK <i>W. Hitchard Jr.</i>	NAME RECEPTACLE ASSEMBLY, 3 ROW BOX CONNECTOR, 100 Q SPECIAL MARKING.	
FINISH	APPD <i>W. Hitchard Jr.</i>	APPD <i>E. Parsons</i>	SIZE C	CODE IDENT NO 00779
	DSGN APPD	OTHER APPD	DRAWING NO 531801	SHEET 2
			SCALE	

531801