

PLEASE CHECK WWW.MOLEX.COM FOR LATEST PART INFORMATION

Part Number: [1510481401](#)
Status: **Active**
Overview: CP Wire-to-Board and Wire-to-Wire Connector Systems
Description: CP-6.5 Header, 6.50mm Pitch, Dual Row, Vertical, Polarized, Positive Lock, Tray Packaging, Glow-Wire Capable, 4 Circuits, Blue

Documents:

3D Model	Test Summary 1510480001-TS-000 (PDF)
3D Model (PDF)	Datasheet (PDF)
Drawing (PDF)	Symbol Footprint Data SYM-151048-1401 (PDF)
Product Specification PS-151048-0001-001 (PDF)	RoHS Certificate of Compliance (PDF)
Packaging Specification PK-151048-0002-001 (PDF)	

Agency Certification

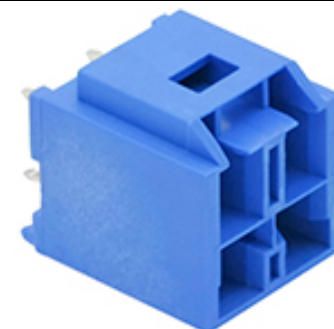
UL E29179

General

Product Family	PCB Headers
Series	151048
Application	Power, Wire-to-Board
Comments	See Product Specification for maximum current rating by circuit size and wire AWG
Overview	CP Wire-to-Board and Wire-to-Wire Connector Systems
Product Name	CP-6.5
UPC	889056066716

Physical

Breakaway	No
Circuits (Loaded)	4
Circuits (maximum)	4
Color - Resin	Blue
Durability (mating cycles max)	30
First Mate / Last Break	No
Flammability	94V-0
Glow-Wire Capable	Yes
Guide to Mating Part	No
Keying to Mating Part	Yes
Lock to Mating Part	Yes
Material - Metal	Copper Alloy
Material - Plating Mating	Matte Tin
Material - Plating Termination	Matte Tin
Material - Resin	Polyamide
Net Weight	2.884/g
Number of Rows	2
Orientation	Vertical
PC Tail Length	3.80mm
PCB Locator	Yes
PCB Retention	Yes
PCB Thickness - Recommended	1.60mm
Packaging Type	Tray
Pitch - Mating Interface	6.50mm
Plating min - Mating	1.270µm
Plating min - Termination	1.270µm
Polarized to Mating Part	Yes
Polarized to PCB	Yes
Temperature Range - Operating	-40° to +105°C
Termination Interface: Style	Through Hole



Series image - Reference only

EU ELV

Not Relevant

EU RoHS

Compliant

REACH SVHC

Not Contained Per -
D(2020)4578-DC (25
June 2020)

Halogen-Free

Status

Not Low-Halogen

For more information, please visit [Contact US](#)

China ROHS

ELV

RoHS Phthalates

China RoHS

Green Image

Not Relevant

Not Contained

Search Parts in this Series

[151048 Series](#)

Mates With

CP-6.5 Receptacle Housing [1510492401](#) ,
[1512072401](#)

Electrical

Current - Maximum per Contact
Voltage - Maximum

10.0A
600V AC (RMS)/DC

Solder Process Data

Lead-freeProcess Capability

WAVE

Material Info**Reference - Drawing Numbers**

Packaging Specification
Product Specification
Sales Drawing
Symbol/Footprint Data
Test Summary

PK-151048-0002-001
PS-151048-0001-001
SD-151048-0001-001
SYM-151048-1401
1510480001-TS-000

This document was generated on 07/17/2020

PLEASE CHECK WWW.MOLEX.COM FOR LATEST PART INFORMATION