

product: DELPHI PN 15426815
 material: CUNI3SI1MG
 surface: AU
 material thickness: 0,25 mm
 cross section [mm²]: 0,35 | 0,5

strip length: 3,50 mm
 cable type: FLRY-A
 insulation ø [mm]: 1,20 - 1,60
 seal:

**Uncontrolled
 Copy
 For Information only!**

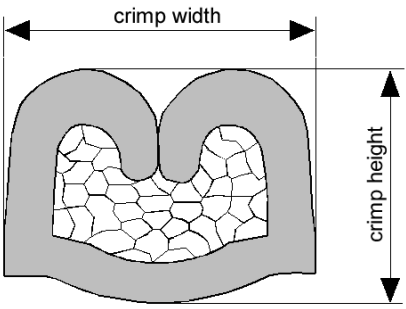
conductor dimension					crimp dimension [mm]					
cable type	cross sect. [mm²]	struct. n x d [mm]	insul. diam. [mm]	tear-out force [N]	core		insulation			
					height ± 0,03	width ± 0,10	height ± 0,10	width ± 0,10	height ± tol.	width ± tol.
FLRY-A	0,35	7 x 0,26	1,25	50	0,95	1,45	1,60	1,80		
FLRY-A	0,5	19 x 0,19	1,50	80	1,05	1,45	1,70	1,90		

core:
 C-1.40-2.5-6-X
 DPN 10713739

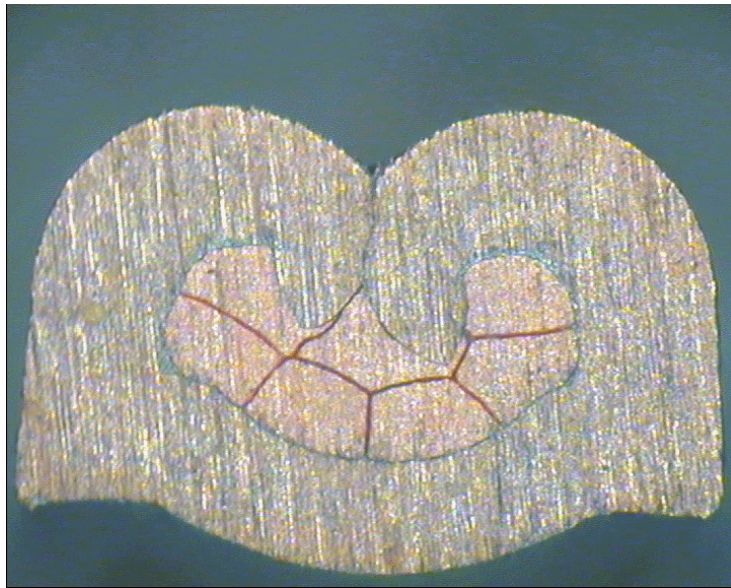
insulation:
 IS-1.80-2.5-6
 DPN 10713806

anvil:

two piece anvil:
 AC-1.40-2.75-A
 DPN 10803652
 AI-1.80-3.0-0.2
 DPN 10769981



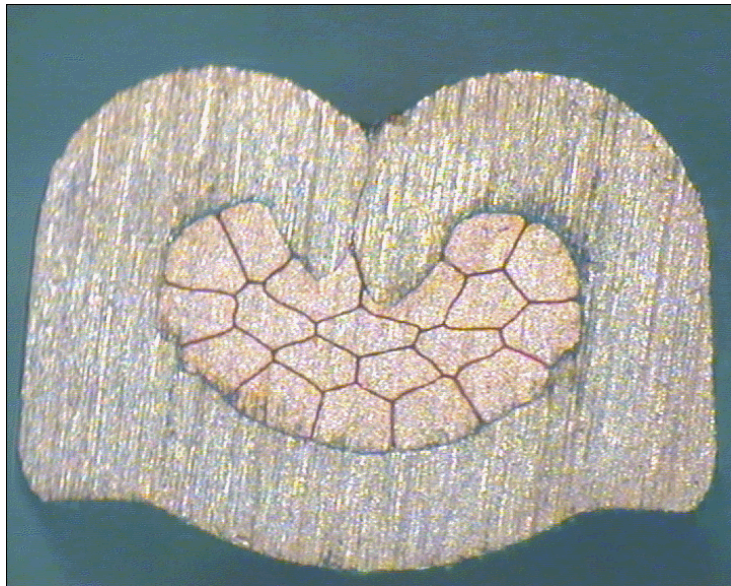
DELPHI PN 15426815



cable:
 $0,35 \text{ mm}^2 = 7 \times 0,26 \text{ mm}$

crimp height:
0,95 mm

crimp width:
1,45 mm



cable:
 $0,50 \text{ mm}^2 = 19 \times 0,19 \text{ mm}$

crimp height:
1,05 mm

crimp width:
1,45 mm