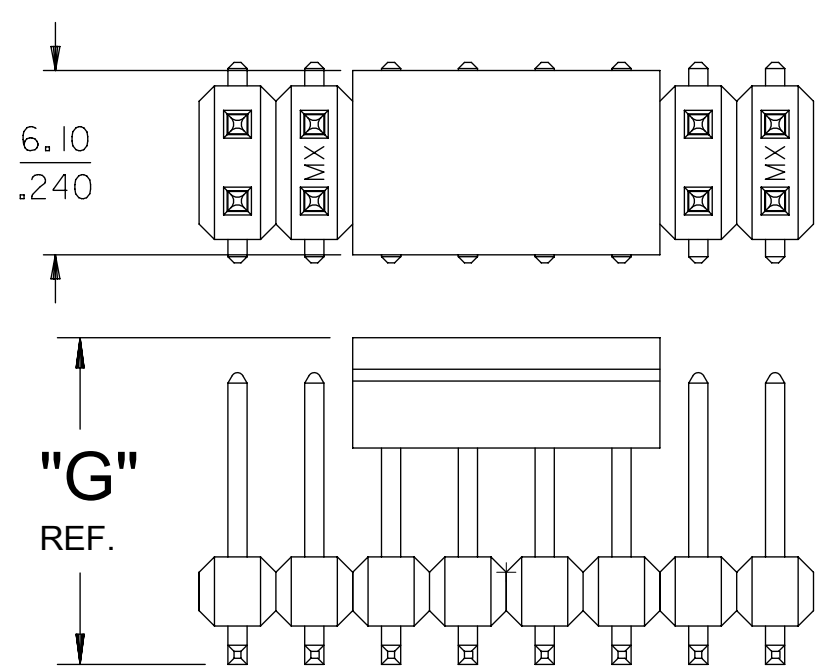
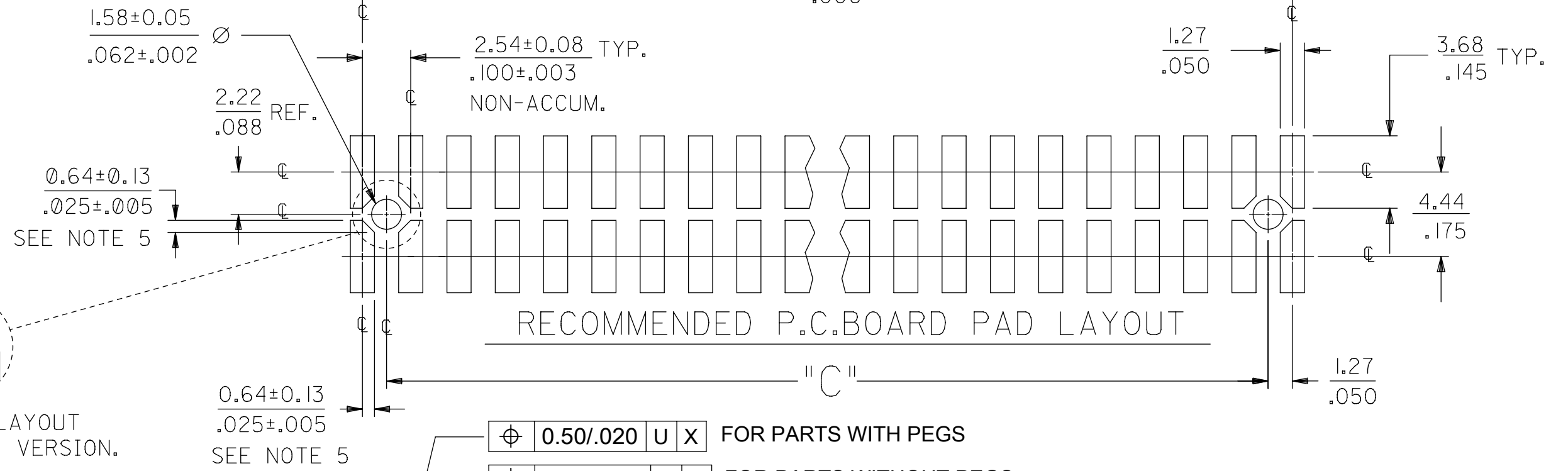


**OPTIONAL
PICK AND PLACE CAP**
SEE NOTES 4 & 9.



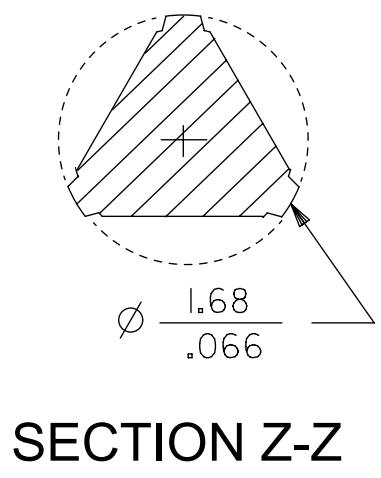
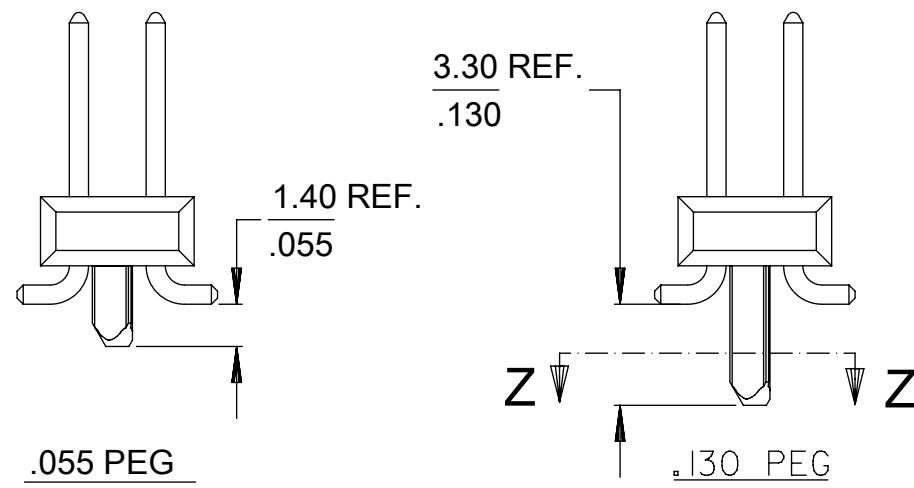
DIM. "M"	DIM. "G"
6.10 .240	10.67 .420
8.13 .320	12.70 .500



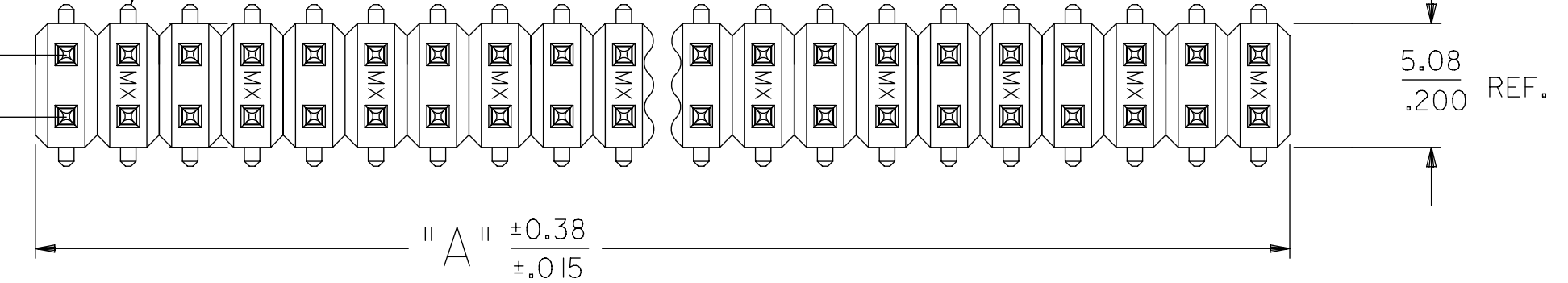
RECOMMENDED P.C.BOARD PAD LAYOUT

- ⌀ 0.50/.020 U X FOR PARTS WITH PEGS
- ⌀ 0.50/.020 U Y FOR PARTS WITHOUT PEGS

PEG OPTIONS

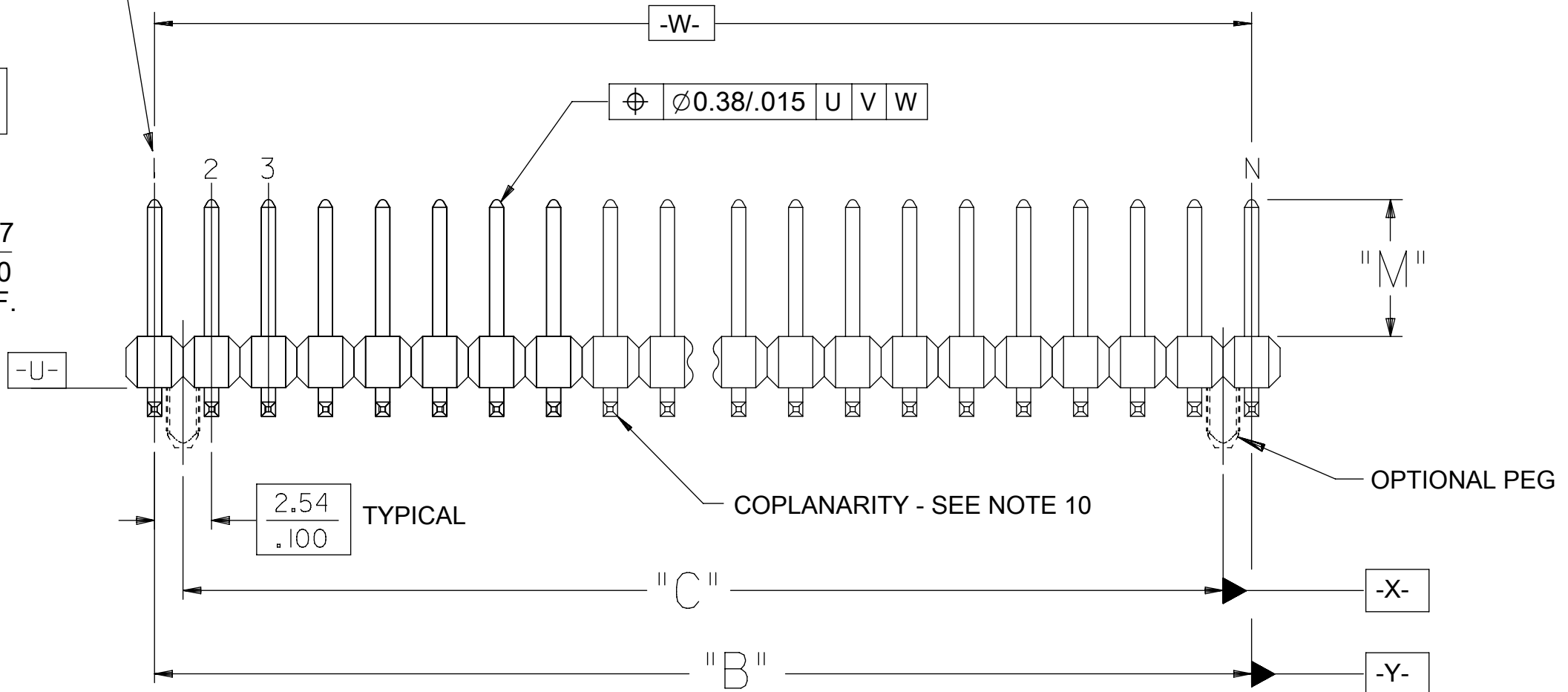
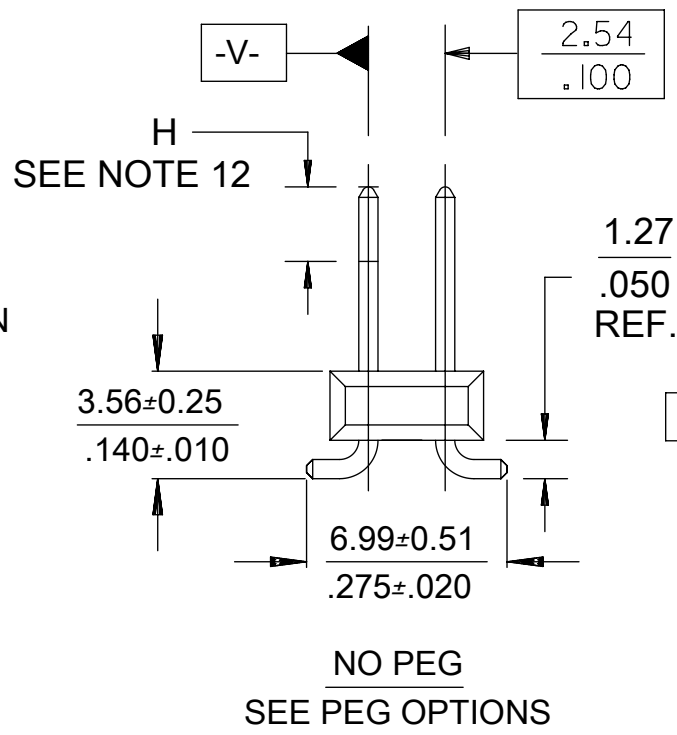


ROW "A"
ROW "B"



USED TO LOCATE VOIDED CIRCUITS

- NOTES:**
- MATERIALS:** INSULATOR: GLASS FILLED LIQUID CRYSTAL POLYMER (LCP). UL94 V-0, COLOR: BLACK
TERMINAL: COPPER ALLOY
 - FINISH:**
59 TIN - 0.00150/.000059 MIN. BRIGHT TIN OVER NICKEL OVERALL.
150 TIN - 0.00381/.000150 MIN. BRIGHT TIN OVER NICKEL OVERALL.
REFLOWED MATTE TIN - 0.00152/.000060 MIN. REFLOWED MATTE TIN OVER NICKEL OVERALL.
15 GOLD - 0.00038/.000015 MIN. GOLD IN SELECT AREA OVER 0.00191/.000075 MIN. TIN IN SELECT AREA OVER NICKEL OVERALL.
30 GOLD - 0.00076/.000030 MIN. GOLD IN SELECT AREA OVER 0.00191/.000075 MIN. TIN IN SELECT AREA OVER NICKEL OVERALL.
50 GOLD - 0.00127/.000050 MIN. GOLD IN SELECT AREA OVER 0.00254/.000100 MIN. TIN IN SELECT AREA OVER NICKEL OVERALL.
 - PART TO CONFORM TO PS-71308.
 - PACKAGING (SEE CHARTS):** BULK: PER PK-70873-0353
TUBES: PER PK-70873-0041.
71308-82** IN TUBES: PER PK-70873-042.
TUBES W/ VAC CAPS: PER PK-70873-0691
TAPE AND REEL W/ VAC CAPS: PER PK-70873-0805.
SEE SHEET 3 FOR TAPE & REEL PRODUCT WITH SHALLOW POCKET REQUIREMENTS.
 - TYP. DIMENSIONS FOR LANDS SURROUNDING HOLES FOR RETENTION PEGS.
 - PIN SOLERABILITY PER MOLEX SPEC. SMES-152.
 - SEE SHEETS 2-6 FOR CHARTED DIMS., PART/EDP NO'S, AND VOIDED CIRCUITS.
 - PIN PUSHOUT FORCE: 3 LBS. MINIMUM.
 - PICK-N-PLACE CAPS WILL BE PLACED SO THAT VACUUM PICK UP AREA WILL BE IN CENTER OF PART.
 - COPLANARITY FOR CIRCUIT SIZES UP TO 40 IS 0.15 MM/.006 INCH. FOR CIRCUIT SIZES 42 AND LARGER, CONTACT MOLEX SALES DEPARTMENT.
 - THIS PART CONFORMS TO CLASS B REQUIREMENTS OF COSMETIC SPECIFICATION PS-45499-002.
 - MEASURE POINT FOR PLATING THICKNESS.



QUALITY SYMBOLS	THIS DRAWING CONTAINS INFORMATION THAT IS PROPRIETARY TO MOLEX ELECTRONIC TECHNOLOGIES, LLC AND SHOULD NOT BE USED WITHOUT WRITTEN PERMISSION				
▽ = 0	ADD 71308-8017, 8416 EC NO: 112218 DRWN: MKIPPER CHKD: JDFOX REV APPR: FSMITH 2016/08/02 2017/01/17 2017/01/20	GENERAL TOLERANCES (UNLESS SPECIFIED)		DIMENSION UNITS	SCALE
▽ = 0		MM	INCH	MM/IN	4:1
▽ = 0		4 PLACES ±	±	DRWN BY	DATE
▽ = 0		3 PLACES ±	± 0.005	KMS	1999/10/15
▽ = 0		2 PLACES ±	± 0.13 ± 0.01	CHK'D BY	DATE
▽ = 0		1 PLACES ±	± 0.25 ±	KMS	1999/10/15
▽ = 0		0 PLACES ±	±	APPR BY	DATE
▽ = 0		ANGULAR TOL ±		KMS	1999/10/15
▽ = 0		DRAFT WHERE APPLICABLE MUST REMAIN WITHIN DIMENSIONS		DRAWING SIZE	THIRD ANGLE PROJECTION
▽ = 0		C			
RELEASE STATUS		RELEASE DATE		71308	
K9		SD-71308-001		71308	
		PSD		000	
		DOC PART		1 OF 6	
		SHEET NUMBER		1	



SALES ASSY INSULATOR
DUAL ROW SMT W/BREAK-OFF .025SQ PIN
GULLWING .100

PRODUCT CUSTOMER DRAWING


SERIES	MATERIAL NUMBER	CUSTOMER
71308	SEE CHART	GENERAL MARKET
DOCUMENT NUMBER	DOC TYPE	DOC PART
SD-71308-001	PSD	000
SHEET NUMBER	1 OF 6	

12		11		10		9		8		7		6		5		4		3		2		1					
H		PACKAGING SEE NOTE 4 SHT 1		4-6 CKT		BULK		TAPE-N-REEL W/ VAC CAPS		N/A		BULK		TAPE-N-REEL W/ VAC CAPS		N/A		BULK		TAPE-N-REEL W/ VAC CAPS		N/A		BULK		BULK	
				8-100 CKT		TUBES		TAPE-N-REEL W/ VAC CAPS		TUBES W/ VAC CAPS		TUBES		TAPE-N-REEL W/ VAC CAPS		TUBES W/ VAC CAPS		TUBES		TAPE-N-REEL W/ VAC CAPS		TUBES W/ VAC CAPS		TUBES		TUBES	
		DIM. M±0.25 MM				6.10 (.240)				6.10 (.240)				6.10 (.240)				8.13 (.320)		8.13 (.320)							
		PLATING				150 TIN				15 GOLD				30 GOLD				15 GOLD		30 GOLD							
		DIM. H				2.54 (.100)				2.54 (.100)				2.54 (.100)				4.57 (.180)		4.57 (.180)							

CKTS	DIM. A		DIM. B		EDP NUMBER	EDP NUMBER	EDP NUMBER	EDP NUMBER	EDP NUMBER	EDP NUMBER	EDP NUMBER	EDP NUMBER	EDP NUMBER	EDP NUMBER	EDP NUMBER	EDP NUMBER	CKTS
	MM	IN	MM	IN													
04	5.08	.200	2.54	.100	015-91-2040	015-91-6040	N/A	015-91-0040	015-91-6042	N/A	015-91-3040	015-91-6043	N/A	015-91-0048	015-91-5049	04	
06	7.62	.300	5.08	.200	015-91-2060	015-91-6060	N/A	015-91-0060	015-91-6062	N/A	015-91-3060	015-91-6063	N/A	015-91-0068	015-91-5069	06	
08	10.16	.400	7.62	.300	015-91-2080	015-91-6080	015-91-3087	015-91-0080	015-91-6082	015-91-3086	015-91-3080	015-91-6083	015-91-3088	015-91-0088	015-91-5089	08	
10	12.70	.500	10.16	.400	015-91-2100	015-91-6100	015-91-3107	015-91-0100	015-91-6102	015-91-3106	015-91-3100	015-91-6103	015-91-3108	015-91-0108	015-91-5109	10	
12	15.24	.600	12.70	.500	015-91-2120	015-91-6120	015-91-3127	015-91-0120	015-91-6122	015-91-3126	015-91-3120	015-91-6123	015-91-3128	015-91-0128	015-91-5129	12	
14	17.78	.700	15.24	.600	015-91-2140	015-91-6140	015-91-3147	015-91-0140	015-91-6142	015-91-3146	015-91-3140	015-91-6143	015-91-3148	015-91-0148	015-91-5149	14	
16	20.32	.800	17.78	.700	015-91-2160	015-91-6160	015-91-3167	015-91-0160	015-91-6162	015-91-3166	015-91-3160	015-91-6163	015-91-3168	015-91-0168	015-91-5169	16	
18	22.86	.900	20.32	.800	015-91-2180		015-91-3187	015-91-0180		015-91-3186	015-91-3180		015-91-3188	015-91-0188	015-91-5189	18	
20	25.40	1.000	22.86	.900	015-91-2200	015-91-6200	015-91-3207	015-91-0200	015-91-6202	015-91-3206	015-91-3200	015-91-6203	015-91-3208	015-91-0208	015-91-5209	20	
22	27.94	1.100	25.40	1.000	015-91-2220		015-91-3227	015-91-0220		015-91-3226	015-91-3220		015-91-3228	015-91-0228	015-91-5229	22	
24	30.48	1.200	27.94	1.100	015-91-2240		015-91-3247	015-91-0240		015-91-3246	015-91-3240		015-91-3248	015-91-0248	015-91-5249	24	
26	33.02	1.300	30.48	1.200	015-91-2260	015-91-6260	015-91-3267	015-91-0260	015-91-6262	015-91-3266	015-91-3260		015-91-3268	015-91-0268	015-91-5269	26	
28	35.56	1.400	33.02	1.300	015-91-2280		015-91-3287	015-91-0280		015-91-3286	015-91-3280		015-91-3288	015-91-0288	015-91-5289	28	
30	38.10	1.500	35.56	1.400	015-91-2300		015-91-3307	015-91-0300		015-91-3306	015-91-3300		015-91-3308	015-91-0308	015-91-5309	30	
32	40.64	1.600	38.10	1.500	015-91-2320		015-91-3327	015-91-0320		015-91-3326	015-91-3320		015-91-3328	015-91-0328	015-91-5329	32	
34	43.18	1.700	40.64	1.600	015-91-2340		015-91-3347	015-91-0340		015-91-3346	015-91-3340		015-91-3348	015-91-0348	015-91-5349	34	
36	45.72	1.800	43.18	1.700	015-91-2360		015-91-3367	015-91-0360		015-91-3366	015-91-3360		015-91-3368	015-91-0368	015-91-5369	36	
38	48.26	1.900	45.72	1.800	015-91-2380		015-91-3387	015-91-0380		015-91-3386	015-91-3380		015-91-3388	015-91-0388	015-91-5389	38	
40	50.80	2.000	48.26	1.900	015-91-2400	015-91-6400	015-91-3407	015-91-0400	015-91-6402	015-91-3406	015-91-3400	015-91-6403	015-91-3408	015-91-0408	015-91-5409	40	
42	53.34	2.100	50.80	2.000	015-91-2420		015-91-3427	015-91-0420		015-91-3426	015-91-3420		015-91-3428	015-91-0428	015-91-5429	42	
44	55.88	2.200	53.34	2.100	015-91-2440		015-91-3447	015-91-0440		015-91-3446	015-91-3440		015-91-3448	015-91-0448	015-91-5449	44	
46	58.42	2.300	55.88	2.200	015-91-2460		015-91-3467	015-91-0460		015-91-3466	015-91-3460		015-91-3468	015-91-0468	015-91-5469	46	
48	60.96	2.400	58.42	2.300	015-91-2480		015-91-3487	015-91-0480		015-91-3486	015-91-3480		015-91-3488	015-91-0488	015-91-5489	48	
50	63.50	2.500	60.96	2.400	015-91-2500	015-91-6500	015-91-3507	015-91-0500	015-91-6502	015-91-3506	015-91-3500	015-91-6503	015-91-3508	015-91-0508	015-91-5509	50	
52	66.04	2.600	63.50	2.500	015-91-2520		015-91-3527	015-91-0520		015-91-3526	015-91-3520		015-91-3528	015-91-0528	015-91-5529	52	
54	68.58	2.700	66.04	2.600	015-91-2540		015-91-3547	015-91-0540		015-91-3546	015-91-3540		015-91-3548	015-91-0548	015-91-5549	54	
56	71.12	2.800	68.58	2.700	015-91-2560		015-91-3567	015-91-0560		015-91-3566	015-91-3560		015-91-3568	015-91-0568	015-91-5569	56	
58	73.66	2.900	71.12	2.800	015-91-2580		015-91-3587	015-91-0580		015-91-3586	015-91-3580		015-91-3588	015-91-0588	015-91-5589	58	
60	76.20	3.000	73.66	2.900	015-91-2600		015-91-3607	015-91-0600		015-91-3606	015-91-3600		015-91-3608	015-91-0608	015-91-5609	60	
62	78.74	3.100	76.20	3.000	015-91-2620		015-91-3627	015-91-0620		015-91-3626	015-91-3620		015-91-3628	015-91-0628	015-91-5629	62	
64	81.28	3.200	78.74	3.100	015-91-2640		015-91-3647	015-91-0640		015-91-3646	015-91-3640		015-91-3648	015-91-0648	015-91-5649	64	
66	83.82	3.300	81.28	3.200	015-91-2660		015-91-3667	015-91-0660		015-91-3666	015-91-3660		015-91-3668	015-91-0668	015-91-5669	66	
68	86.36	3.400	83.82	3.300	015-91-2680		015-91-3687	015-91-0680		015-91-3686	015-91-3680		015-91-3688	015-91-0688	015-91-5689	68	
70	88.90	3.500	86.36	3.400	015-91-2700		015-91-3707	015-91-0700		015-91-3706	015-91-3700		015-91-3708	015-91-0708	015-91-5709	70	
72	91.44	3.600	88.90	3.500	015-91-2720		015-91-3727	015-91-0720		015-91-3726	015-91-3720		015-91-3728	015-91-0728	015-91-5729	72	
74	93.98	3.700	91.44	3.600	015-91-2740		015-91-3747	015-91-0740		015-91-3746	015-91-3740		015-91-3748	015-91-0748	015-91-5749	74	
76	96.52	3.800	93.98	3.700	015-91-2760		015-91-3767	015-91-0760		015-91-3766	015-91-3760		015-91-3768	015-91-0768	015-91-5769	76	
78	99.06	3.900	96.52	3.800	015-91-2780		015-91-3787	015-91-0780		015-91-3786	015-91-3780		015-91-3788	015-91-0788	015-91-5789	78	
80	101.60	4.000	99.06	3.900	015-91-2800		015-91-3807	015-91-0800		015-91-3806	015-91-3800		015-91-3808	015-91-0808	015-91-5809	80	
82	104.14	4.100	101.60	4.000	71308-0082		71308-0482	71308-0182		71308-0582	71308-0282		71308-0682	71308-1182	71308-1282	82	
84	106.68	4.200	104.14	4.100	71308-0084		71308-0484	71308-0184		71308-0584	71308-0284		71308-0684	71308-1184	71308-1284	84	
86	109.22	4.300	106.68	4.200	71308-0086		71308-0486	71308-0186		71308-0586	71308-0286		71308-0686	71308-1186	71308-1286	86	
88	111.76	4.400	109.22	4.300	71308-0088		71308-0488	71308-0188		71308-0588	71308-0288		71308-0688	71308-1188	71308-1288	88	
90	114.30	4.500	111.76	4.400	71308-0090		71308-0490	71308-0190		71308-0590	71308-0290		71308-0690	71308-1190	71308-1290	90	
92	116.84	4.600	114.30	4.500	71308-0092		71308-0492	71308-0192		71308-0592	71308-0292		71308-0692	71308-1192	71308-1292	92	
94	119.38	4.700	116.84	4.600	71308-0094		71308-0494	71308-0194		71308-0594	71308-0294		71308-0694	71308-1194	71308-1294	94	
96	121.92	4.800	119.38	4.700	71308-0096		71308-0496	71308-0196		71308-0596	71308-0296		71308-0696	71308-1196	71308-1296	96	
98	124.46	4.900	121.92	4.800	71308-0098		71308-0498	71308-0198		71308-0598	71308-0298		71308-0698	71308-1198	71308-1298	98	
100	127.00	5.000	124.46	4.900	71308-0101		71308-0500	71308-0200		71308-0600	71308-0300		71308-0700	71308-1200	71308-1300	100	


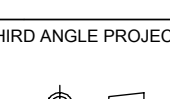
NO PEG VERSION
(SEE ALSO SHEET 3)

THIS DRAWING CONTAINS INFORMATION THAT IS PROPRIETARY TO MOLEX ELECTRONIC TECHNOLOGIES, LLC AND SHOULD NOT BE USED WITHOUT WRITTEN PERMISSION

QUALITY SYMBOLS	ADD 71308-8017, 8416 EC NO: 112218 DRWN: MKIPPER CHKD: JDFOX REV APPR: FSMITH	2016/08/02 2017/01/17 2017/01/20	GENERAL TOLERANCES (UNLESS SPECIFIED)	DIMENSION UNITS MM/IN	SCALE NTS	 <p style="text-align: center;">SALES ASSY INSULATOR DUAL ROW SMT W/BREAK-OFF .025SQ PIN GULLWING .100</p> <p style="text-align: center;">PRODUCT CUSTOMER DRAWING</p> <table border="1"> <tr> <td>SERIES</td> <td>MATERIAL NUMBER</td> <td>CUSTOMER</td> </tr> <tr> <td>71308</td> <td>SEE CHART</td> <td>GENERAL MARKET</td> </tr> <tr> <td>DOCUMENT NUMBER</td> <td>DOC TYPE</td> <td>DOC PART</td> </tr> <tr> <td>SD-71308-001</td> <td>PSD</td> <td>000</td> </tr> <tr> <td>SHEET NUMBER</td> <td colspan="2">2 OF 6</td> </tr> </table>	SERIES	MATERIAL NUMBER	CUSTOMER	71308	SEE CHART	GENERAL MARKET	DOCUMENT NUMBER	DOC TYPE	DOC PART	SD-71308-001	PSD	000	SHEET NUMBER	2 OF 6	
SERIES	MATERIAL NUMBER	CUSTOMER																			
71308	SEE CHART	GENERAL MARKET																			
DOCUMENT NUMBER	DOC TYPE	DOC PART																			
SD-71308-001	PSD	000																			
SHEET NUMBER	2 OF 6																				
			<table border="1"> <tr> <td>4 PLACES</td> <td>±</td> <td>±</td> </tr> <tr> <td>3 PLACES</td> <td>±</td> <td>± 0.005</td> </tr> <tr> <td>2 PLACES</td> <td>± 0.13</td> <td>± 0.01</td> </tr> <tr> <td>1 PLACES</td> <td>± 0.25</td> <td>±</td> </tr> <tr> <td>0 PLACES</td> <td>±</td> <td>±</td> </tr> </table>	4 PLACES	±	±	3 PLACES	±	± 0.005	2 PLACES	± 0.13	± 0.01	1 PLACES	± 0.25	±	0 PLACES	±	±	DRWN BY KMS	DATE 1999/10/15	
4 PLACES	±	±																			
3 PLACES	±	± 0.005																			
2 PLACES	± 0.13	± 0.01																			
1 PLACES	± 0.25	±																			
0 PLACES	±	±																			
			ANGULAR TOL -	CHKD BY KMS	DATE 1999/10/15																
			DRAFT WHERE APPLICABLE MUST REMAIN WITHIN DIMENSIONS	APPR BY KMS	DATE 1999/10/15																
				DRAWING SIZE C	THIRD ANGLE PROJECTION																

					IN TAPE AND REEL WITH SHALLOW POCKET TAPE					BULK / IN TUBES				
PACKAGING SEE NOTE 4, SHT 1					4-8 CKT	TAPE-N-REEL W/ VAC CAPS	TAPE-N-REEL W/ VAC CAPS					BULK	BULK	BULK
					10-100 CKT	TAPE-N-REEL W/ VAC CAPS	TAPE-N-REEL W/ VAC CAPS					TUBES	TUBES	TUBES
DIM. M±0.25 MM						6.10 (.240)	6.10 (.240)					8.13 (.320)	8.13 (.320)	13.59 (.535)
PLATING						30 GOLD	15 GOLD					150 TIN	REFLOWED MATTE TIN	150 TIN
DIM. H						2.54 (.100)	2.54 (.100)					4.57 (.180)	4.57 (.180)	4.57 (.180)
CKTS	DIM. A		DIM. B		EDP NUMBER	EDP NUMBER					EDP NUMBER	EDP NUMBER	EDP NUMBER	CKTS
	MM	IN	MM	IN										
04	5.08	.200	2.54	.100										04
06	7.62	.300	5.08	.200		015-91-6068								06
08	10.16	.400	7.62	.300		015-91-6088								08
10	12.70	.500	10.16	.400		015-91-6108					71308-8010		71308-8210	10
12	15.24	.600	12.70	.500										12
14	17.78	.700	15.24	.600	015-91-6148									14
16	20.32	.800	17.78	.700							71308-8016		71308-8017	16
18	22.86	.900	20.32	.800										18
20	25.40	1.000	22.86	.900										20
22	27.94	1.100	25.40	1.000										22
24	30.48	1.200	27.94	1.100										24
26	33.02	1.300	30.48	1.200										26
28	35.56	1.400	33.02	1.300										28
30	38.10	1.500	35.56	1.400										30
32	40.64	1.600	38.10	1.500										32
34	43.18	1.700	40.64	1.600										34
36	45.72	1.800	43.18	1.700										36
38	48.26	1.900	45.72	1.800										38
40	50.80	2.000	48.26	1.900										40
42	53.34	2.100	50.80	2.000										42
44	55.88	2.200	53.34	2.100										44
46	58.42	2.300	55.88	2.200										46
48	60.96	2.400	58.42	2.300										48
50	63.50	2.500	60.96	2.400										50
52	66.04	2.600	63.50	2.500										52
54	68.58	2.700	66.04	2.600										54
56	71.12	2.800	68.58	2.700										56
58	73.66	2.900	71.12	2.800										58
60	76.20	3.000	73.66	2.900										60
62	78.74	3.100	76.20	3.000										62
64	81.28	3.200	78.74	3.100										64
66	83.82	3.300	81.28	3.200										66
68	86.36	3.400	83.82	3.300										68
70	88.90	3.500	86.36	3.400										70
72	91.44	3.600	88.90	3.500										72
74	93.98	3.700	91.44	3.600										74
76	96.52	3.800	93.98	3.700										76
78	99.06	3.900	96.52	3.800										78
80	101.60	4.000	99.06	3.900										80
82	104.14	4.100	101.60	4.000										82
84	106.68	4.200	104.14	4.100										84
86	109.22	4.300	106.68	4.200										86
88	111.76	4.400	109.22	4.300										88
90	114.30	4.500	111.76	4.400										90
92	116.84	4.600	114.30	4.500										92
94	119.38	4.700	116.84	4.600										94
96	121.92	4.800	119.38	4.700										96
98	124.46	4.900	121.92	4.800										98
100	127.00	5.000	124.46	4.900										100

NO PEG VERSION
(ALSO SEE SHEET 2)

THIS DRAWING CONTAINS INFORMATION THAT IS PROPRIETARY TO MOLEX ELECTRONIC TECHNOLOGIES, LLC AND SHOULD NOT BE USED WITHOUT WRITTEN PERMISSION										
QUALITY SYMBOLS	ADD 71308-8017, 8416 EC NO: 112218 DRWN: MKIPPER CHKD: JDFOX REV / APPR: FSMITH	GENERAL TOLERANCES (UNLESS SPECIFIED)				DIMENSION UNITS		SCALE		 SALES ASSY INSULATOR DUAL ROW SMT W/BREAK-OFF .025SQ PIN GULLWING .100
		MM	INCH	MM/IN	NTS	DRWN BY	DATE			
▽ = 0		4 PLACES ±	±	KMS	1999/10/15					
▽ = 0		3 PLACES ±	± 0.005	KMS	1999/10/15					
▽ = 0		2 PLACES ±	± 0.13 ± 0.01	KMS	1999/10/15					
▽ = 0		1 PLACES ±	± 0.25 ±	KMS	1999/10/15					
▽ = 0		0 PLACES ±	±	KMS	1999/10/15					
▽ = 0		ANGULAR TOL ±		DRAWING SIZE		THIRD ANGLE PROJECTION				
▽ = 0		DRAFT WHERE APPLICABLE MUST REMAIN WITHIN DIMENSIONS		C						
▽ = 0										
RELEASE STATUS		RELEASE DATE		SERIES		MATERIAL NUMBER		CUSTOMER		
				71308		SEE CHART		GENERAL MARKET		
				DOCUMENT NUMBER		DOC TYPE		DOC PART		
				SD-71308-001		PSD		000		
				SHEET NUMBER		SHEET NUMBER		SHEET NUMBER		
				3 OF 6		3 OF 6		3 OF 6		

H	12		11		10		9		8		7		6		5		4		3		2		1	
	PACKAGING SEE NOTE 4 SHT 1				4-8 CKT		BULK		TAPE-N-REEL W/ VAC CAPS		BULK		TAPE-N-REEL W/ VAC CAPS		TAPE-N-REEL W/ VAC CAPS									
					10-100 CKT		TUBES		TAPE-N-REEL W/ VAC CAPS		TUBES		TAPE-N-REEL W/ VAC CAPS		TAPE-N-REEL W/ VAC CAPS									
	DIM. M±0.25 MM				6.10 (.240)		6.10 (.240)		8.13 (.320)															
PLATING				30 GOLD		150 TIN		REFLOWED MATTE TIN																
DIM. H				2.54 (.100)		2.54 (.100)		4.57 (.180)																
CKTS	DIM. A		DIM. B		DIM. C		EDP NUMBER	EDP NUMBER	EDP NUMBER	EDP NUMBER	EDP NUMBER	EDP NUMBER	EDP NUMBER	EDP NUMBER	EDP NUMBER	EDP NUMBER	EDP NUMBER	EDP NUMBER	EDP NUMBER	EDP NUMBER	EDP NUMBER	EDP NUMBER	CKTS	
	MM	IN	MM	IN	MM	IN																		
04	5.08	.200	2.54	.100	----	----	015-91-1048	015-91-6047	71308-6104	71308-6204													04	
06	7.62	.300	5.08	.200	2.54	.100	015-91-1068	015-91-6067	71308-6106	71308-6206													06	
08	10.16	.400	7.62	.300	5.08	.200	015-91-1088	015-91-6087	71308-6108	71308-6208													08	
10	12.70	.500	10.16	.400	7.62	.300	015-91-1108	015-91-6107	71308-6110	71308-6210													10	
12	15.24	.600	12.70	.500	10.16	.400	015-91-1128		71308-6112	71308-6212													12	
14	17.78	.700	15.24	.600	12.70	.500	015-91-1148	015-91-6147	71308-6114	71308-6214													14	
16	20.32	.800	17.78	.700	15.24	.600	015-91-1168	015-91-6167	71308-6116	71308-6216	71308-8416												16	
18	22.86	.900	20.32	.800	17.78	.700	015-91-1188		71308-6118	71308-6218													18	
20	25.40	1.000	22.86	.900	20.32	.800	015-91-1208	015-91-6207	71308-6120	71308-6220													20	
22	27.94	1.100	25.40	1.000	22.86	.900	015-91-1228		71308-6122	71308-6222													22	
24	30.48	1.200	27.94	1.100	25.40	1.000	015-91-1248		71308-6124	71308-6224													24	
26	33.02	1.300	30.48	1.200	27.94	1.100	015-91-1268		71308-6126	71308-6226	71308-8426												26	
28	35.56	1.400	33.02	1.300	30.48	1.200	015-91-1288		71308-6128	71308-6228													28	
30	38.10	1.500	35.56	1.400	33.02	1.300	015-91-1308		71308-6130	71308-6230													30	
32	40.64	1.600	38.10	1.500	35.56	1.400	015-91-1328		71308-6132	71308-6232													32	
34	43.18	1.700	40.64	1.600	38.10	1.500	015-91-1348		71308-6134	71308-6234													34	
36	45.72	1.800	43.18	1.700	40.64	1.600	015-91-1368		71308-6136	71308-6236													36	
38	48.26	1.900	45.72	1.800	43.18	1.700	015-91-1388		71308-6138	71308-6238													38	
40	50.80	2.000	48.26	1.900	45.72	1.800	015-91-1408	15-91-6407	71308-6140	71308-6240													40	
42	53.34	2.100	50.80	2.000	48.26	1.900	015-91-1428		71308-6142	71308-6242													42	
44	55.88	2.200	53.34	2.100	50.80	2.000	015-91-1448		71308-6144	71308-6244													44	
46	58.42	2.300	55.88	2.200	53.34	2.100	015-91-1468		71308-6146	71308-6246													46	
48	60.96	2.400	58.42	2.300	55.88	2.200	015-91-1488		71308-6148	71308-6248													48	
50	63.50	2.500	60.96	2.400	58.42	2.300	015-91-1508	015-91-6507	71308-6150	71308-6250													50	
52	66.04	2.600	63.50	2.500	60.96	2.400	015-91-1528		71308-6152	71308-6252													52	
54	68.58	2.700	66.04	2.600	63.50	2.500	015-91-1548		71308-6154	71308-6254													54	
56	71.12	2.800	68.58	2.700	66.04	2.600	015-91-1568		71308-6156	71308-6256													56	
58	73.66	2.900	71.12	2.800	68.58	2.700	015-91-1588		71308-6158	71308-6258													58	
60	76.20	3.000	73.66	2.900	71.12	2.800	015-91-1608		71308-6160	71308-6260													60	
62	78.74	3.100	76.20	3.000	73.66	2.900	015-91-1628		71308-6162	71308-6262													62	
64	81.28	3.200	78.74	3.100	76.20	3.000	015-91-1648		71308-6164	71308-6264													64	
66	83.82	3.300	81.28	3.200	78.74	3.100	015-91-1668		71308-6166	71308-6266													66	
68	86.36	3.400	83.82	3.300	81.28	3.200	015-91-1688		71308-6168	71308-6268													68	
70	88.90	3.500	86.36	3.400	83.82	3.300	015-91-1708		71308-6170	71308-6270													70	
72	91.44	3.600	88.90	3.500	86.36	3.400	015-91-1728		71308-6172	71308-6272													72	
74	93.98	3.700	91.44	3.600	88.90	3.500	015-91-1748		71308-6174	71308-6274													74	
76	96.52	3.800	93.98	3.700	91.44	3.600	015-91-1768		71308-6176	71308-6276													76	
78	99.06	3.900	96.52	3.800	93.98	3.700	015-91-1788		71308-6178	71308-6278													78	
80	101.60	4.000	99.06	3.900	96.52	3.800	015-91-1808		71308-6180	71308-6280													80	
82	104.14	4.100	101.60	4.000	99.06	3.900	71308-6082																82	
84	106.68	4.200	104.14	4.100	101.60	4.000	71308-6084																84	
86	109.22	4.300	106.68	4.200	104.14	4.100	71308-6086																86	
88	111.76	4.400	109.22	4.300	106.68	4.200	71308-6088																88	
90	114.30	4.500	111.76	4.400	109.22	4.300	71308-6090																90	
92	116.84	4.600	114.30	4.500	111.76	4.400	71308-6092																92	
94	119.38	4.700	116.84	4.600	114.30	4.500	71308-6094																94	
96	121.92	4.800	119.38	4.700	116.84	4.600	71308-6096																96	
98	124.46	4.900	121.92	4.800	119.38	4.700	71308-6098																98	
100	127.00	5.000	124.46	4.900	121.92	4.800	71308-6100																100	

SHORT PEG VERSION (.055")

QUALITY SYMBOLS 	THIS DRAWING CONTAINS INFORMATION THAT IS PROPRIETARY TO MOLEX ELECTRONIC TECHNOLOGIES, LLC AND SHOULD NOT BE USED WITHOUT WRITTEN PERMISSION																																						
	ADD 71308-8017, 8416 EC NO: 112218 DRWN: MKIPPER CHKD: JDFOX REV APPR: FSMITH	2016/08/02 2017/01/17 2017/01/20	GENERAL TOLERANCES (UNLESS SPECIFIED) <table border="1"> <tr><th colspan="2"></th><th>MM</th><th>INCH</th></tr> <tr><td>4 PLACES</td><td>±</td><td></td><td>±</td></tr> <tr><td>3 PLACES</td><td>±</td><td>± 0.005</td><td></td></tr> <tr><td>2 PLACES</td><td>±</td><td>± 0.13</td><td>± 0.01</td></tr> <tr><td>1 PLACES</td><td>±</td><td>± 0.25</td><td>±</td></tr> <tr><td>0 PLACES</td><td>±</td><td></td><td>±</td></tr> </table>			MM	INCH	4 PLACES	±		±	3 PLACES	±	± 0.005		2 PLACES	±	± 0.13	± 0.01	1 PLACES	±	± 0.25	±	0 PLACES	±		±	DIMENSION UNITS MM/IN SCALE NTS	DRWN BY KMS DATE 1999/10/15	CHK'D BY KMS DATE 1999/10/15	APPR BY KMS DATE 1999/10/15	DRAWING SIZE C THIRD ANGLE PROJECTION 					SALES ASSY INSULATOR DUAL ROW SMT W/BREAK-OFF .025SQ PIN GULLWING .100		
		MM	INCH																																				
4 PLACES	±		±																																				
3 PLACES	±	± 0.005																																					
2 PLACES	±	± 0.13	± 0.01																																				
1 PLACES	±	± 0.25	±																																				
0 PLACES	±		±																																				
PRODUCT CUSTOMER DRAWING								SERIES 71308	MATERIAL NUMBER SEE CHART	CUSTOMER GENERAL MARKET																													
RELEASE STATUS K9								DOCUMENT NUMBER SD-71308-001	DOC TYPE PSD	DOC PART 000	SHEET NUMBER 5 OF 6																												

												PEG OPTION											
												NO PEG VERSION			NO PEG VERSION			LONG PEG VERSION (.130")			SHORT PEG VERSION (.055")		
PACKAGING SEE NOTE 4, SHT 1			4-6 CKT			BULK	TAPE-N-REEL W/VAC CAPS	N/A	4-8 CKT			TAPE-N-REEL W/VAC CAPS	BULK	BULK	BULK	TAPE-N-REEL W/VAC CAPS	BULK	BULK	TAPE-N-REEL W/VAC CAPS				
			8-100 CKT			TUBES	TAPE-N-REEL W/VAC CAPS	TUBES W/ VAC CAPS	10-100 CKT			TAPE-N-REEL W/VAC CAPS	TUBES	TUBES	TUBES	TAPE-N-REEL W/VAC CAPS	TUBES	TUBES	TAPE-N-REEL W/VAC CAPS				
DIM. M0.25 MM						6.10 (.240)						8.13(.320)			13.59(.535)			6.10 (.240)					
PLATING						59 TIN						59 TIN			59 TIN			59 TIN					
DIM. H						2.54(.100)						4.57(.180)			4.57(.180)			2.54(.100)					

CKTS	DIM. A		DIM. B		DIM. C		EDP NUMBER	EDP NUMBER	EDP NUMBER		EDP NUMBER	EDP NUMBER	EDP NUMBER	EDP NUMBER	EDP NUMBER	EDP NUMBER	EDP NUMBER	EDP NUMBER	CKTS
	MM	IN	MM	IN	MM	IN													
04	5.08	.200	2.54	.100	---	---	71308-5404	71308-5504	N/A		71308-5704	71308-5804	71308-5904	71308-6404	71308-6504	71308-6604	71308-6704	71308-6804	04
06	7.62	.300	5.08	.200	2.54	.100	71308-5406	71308-5506	N/A		71308-5706	71308-5806	71308-5906	71308-6406	71308-6506	71308-6606	71308-6706	71308-6806	06
08	10.16	.400	7.62	.300	5.08	.200	71308-5408	71308-5508	71308-5608		71308-5708	71308-5808	71308-5908	71308-6408	71308-6508	71308-6608	71308-6708	71308-6808	08
10	12.70	.500	10.16	.400	7.62	.300	71308-5410	71308-5510	71308-5610		71308-5710	71308-5810	71308-5910	71308-6410	71308-6510	71308-6610	71308-6710	71308-6810	10
12	15.24	.600	12.70	.500	10.16	.400	71308-5412	71308-5512	71308-5612		71308-5712	71308-5812	71308-5912	71308-6412	71308-6512	71308-6612	71308-6712	71308-6812	12
14	17.78	.700	15.24	.600	12.70	.500	71308-5414	71308-5514	71308-5614		71308-5714	71308-5814	71308-5914	71308-6414	71308-6514	71308-6614	71308-6714	71308-6814	14
16	20.32	.800	17.78	.700	15.24	.600	71308-5416	71308-5516	71308-5616		71308-5716	71308-5816	71308-5916	71308-6416	71308-6516	71308-6616	71308-6716	71308-6816	16
18	22.86	.900	20.32	.800	17.78	.700	71308-5418	71308-5518	71308-5618		71308-5718	71308-5818	71308-5918	71308-6418	71308-6518	71308-6618	71308-6718	71308-6818	18
20	25.40	1.000	22.86	.900	20.32	.800	71308-5420	71308-5520	71308-5620		71308-5720	71308-5820	71308-5920	71308-6420	71308-6520	71308-6620	71308-6720	71308-6820	20
22	27.94	1.100	25.40	1.000	22.86	.900	71308-5422	71308-5522	71308-5622		71308-5722	71308-5822	71308-5922	71308-6422	71308-6522	71308-6622	71308-6722	71308-6822	22
24	30.48	1.200	27.94	1.100	25.40	1.000	71308-5424	71308-5524	71308-5624		71308-5724	71308-5824	71308-5924	71308-6424	71308-6524	71308-6624	71308-6724	71308-6824	24
26	33.02	1.300	30.48	1.200	27.94	1.100	71308-5426	71308-5526	71308-5626		71308-5726	71308-5826	71308-5926	71308-6426	71308-6526	71308-6626	71308-6726	71308-6826	26
28	35.56	1.400	33.02	1.300	30.48	1.200	71308-5428	71308-5528	71308-5628		71308-5728	71308-5828	71308-5928	71308-6428	71308-6528	71308-6628	71308-6728	71308-6828	28
30	38.10	1.500	35.56	1.400	33.02	1.300	71308-5430	71308-5530	71308-5630		71308-5730	71308-5830	71308-5930	71308-6430	71308-6530	71308-6630	71308-6730	71308-6830	30
32	40.64	1.600	38.10	1.500	35.56	1.400	71308-5432	71308-5532	71308-5632		71308-5732	71308-5832	71308-5932	71308-6432	71308-6532	71308-6632	71308-6732	71308-6832	32
34	43.18	1.700	40.64	1.600	38.10	1.500	71308-5434	71308-5534	71308-5634		71308-5734	71308-5834	71308-5934	71308-6434	71308-6534	71308-6634	71308-6734	71308-6834	34
36	45.72	1.800	43.18	1.700	40.64	1.600	71308-5436	71308-5536	71308-5636		71308-5736	71308-5836	71308-5936	71308-6436	71308-6536	71308-6636	71308-6736	71308-6836	36
38	48.26	1.900	45.72	1.800	43.18	1.700	71308-5438	71308-5538	71308-5638		71308-5738	71308-5838	71308-5938	71308-6438	71308-6538	71308-6638	71308-6738	71308-6838	38
40	50.80	2.000	48.26	1.900	45.72	1.800	71308-5440	71308-5540	71308-5640		71308-5740	71308-5840	71308-5940	71308-6440	71308-6540	71308-6640	71308-6740	71308-6840	40
42	53.34	2.100	50.80	2.000	48.26	1.900	71308-5442	71308-5542	71308-5642		71308-5742	71308-5842	71308-5942	71308-6442	71308-6542	71308-6642	71308-6742	71308-6842	42
44	55.88	2.200	53.34	2.100	50.80	2.000	71308-5444	71308-5544	71308-5644		71308-5744	71308-5844	71308-5944	71308-6444	71308-6544	71308-6644	71308-6744	71308-6844	44
46	58.42	2.300	55.88	2.200	53.34	2.100	71308-5446	71308-5546	71308-5646		71308-5746	71308-5846	71308-5946	71308-6446	71308-6546	71308-6646	71308-6746	71308-6846	46
48	60.96	2.400	58.42	2.300	55.88	2.200	71308-5448	71308-5548	71308-5648		71308-5748	71308-5848	71308-5948	71308-6448	71308-6548	71308-6648	71308-6748	71308-6848	48
50	63.50	2.500	60.96	2.400	58.42	2.300	71308-5450	71308-5550	71308-5650		71308-5750	71308-5850	71308-5950	71308-6450	71308-6550	71308-6650	71308-6750	71308-6850	50
52	66.04	2.600	63.50	2.500	60.96	2.400	71308-5452	71308-5552	71308-5652		71308-5752	71308-5852	71308-5952	71308-6452	71308-6552	71308-6652	71308-6752	71308-6852	52
54	68.58	2.700	66.04	2.600	63.50	2.500	71308-5454	71308-5554	71308-5654		71308-5754	71308-5854	71308-5954	71308-6454	71308-6554	71308-6654	71308-6754	71308-6854	54
56	71.12	2.800	68.58	2.700	66.04	2.600	71308-5456	71308-5556	71308-5656		71308-5756	71308-5856	71308-5956	71308-6456	71308-6556	71308-6656	71308-6756	71308-6856	56
58	73.66	2.900	71.12	2.800	68.58	2.700	71308-5458	71308-5558	71308-5658		71308-5758	71308-5858	71308-5958	71308-6458	71308-6558	71308-6658	71308-6758	71308-6858	58
60	76.20	3.000	73.66	2.900	71.12	2.800	71308-5460	71308-5560	71308-5660		71308-5760	71308-5860	71308-5960	71308-6460	71308-6560	71308-6660	71308-6760	71308-6860	60
62	78.74	3.100	76.20	3.000	73.66	2.900	71308-5462	71308-5562	71308-5662		71308-5762	71308-5862	71308-5962	71308-6462	71308-6562	71308-6662	71308-6762	71308-6862	62
64	81.28	3.200	78.74	3.100	76.20	3.000	71308-5464	71308-5564	71308-5664		71308-5764	71308-5864	71308-5964	71308-6464	71308-6564	71308-6664	71308-6764	71308-6864	64
66	83.82	3.300	81.28	3.200	78.74	3.100	71308-5466	71308-5566	71308-5666		71308-5766	71308-5866	71308-5966	71308-6466	71308-6566	71308-6666	71308-6766	71308-6866	66
68	86.36	3.400	83.82	3.300	81.28	3.200	71308-5468	71308-5568	71308-5668		71308-5768	71308-5868	71308-5968	71308-6468	71308-6568	71308-6668	71308-6768	71308-6868	68
70	88.90	3.500	86.36	3.400	83.82	3.300	71308-5470	71308-5570	71308-5670		71308-5770	71308-5870	71308-5970	71308-6470	71308-6570	71308-6670	71308-6770	71308-6870	70
72	91.44	3.600	88.90	3.500	86.36	3.400	71308-5472	71308-5572	71308-5672		71308-5772	71308-5872	71308-5972	71308-6472	71308-6572	71308-6672	71308-6772	71308-6872	72
74	93.98	3.700	91.44	3.600	88.90	3.500	71308-5474	71308-5574	71308-5674		71308-5774	71308-5874	71308-5974	71308-6474	71308-6574	71308-6674	71308-6774	71308-6874	74
76	96.52	3.800	93.98	3.700	91.44	3.600	71308-5476	71308-5576	71308-5676		71308-5776	71308-5876	71308-5976	71308-6476	71308-6576	71308-6676	71308-6776	71308-6876	76
78	99.06	3.900	96.52	3.800	93.98	3.700	71308-5478	71308-5578	71308-5678		71308-5778	71308-5878	71308-5978	71308-6478	71308-6578	71308-6678	71308-6778	71308-6878	78
80	101.60	4.000	99.06	3.900	96.52	3.800	71308-5480	71308-5580	71308-5680		71308-5780	71308-5880	71308-5980	71308-6480	71308-6580	71308-6680	71308-6780	71308-6880	80
82	104.14	4.100	101.60	4.000	99.06	3.900	71308-5482	71308-5582	71308-5682		71308-5782	71308-5882	71308-5982	71308-6482	71308-6582	71308-6682	71308-6782	71308-6882	82
84	106.68	4.200	104.14	4.100	101.60	4.000	71308-5484	71308-5584	71308-5684		71308-5784	71308-5884	71308-5984	71308-6484	71308-6584	71308-6684	71308-6784	71308-6884	84
86	109.22	4.300	106.68	4.200	104.14	4.100	71308-5486	71308-5586	71308-5686		71308-5786	71308-5886	71308-5986	71308-6486	71308-6586	71308-6686	71308-6786	71308-6886	86
88	111.76	4.400	109.22	4.300	106.68	4.200	71308-5488	71308-5588	71308-5688		71308-5788	71308-5888	71308-5988	71308-6488	71308-6588	71308-6688	71308-6788	71308-6888	88
90	114.30	4.500	111.76	4.400	109.22	4.300	71308-5490	71308-5590	71308-5690		71308-5790	71308-5890	71308-5990	71308-6490	71308-6590	71308-6690	71308-6790	71308-6890	90
92	116.84	4.600	114.30	4.500	111.76	4.400	71308-5492	71308-5592	71308-5692		71308-5792	71308-5892	71308-5992	71308-6492	71308-6592	71308-6692	71308-6792	71308-6892	92
94	119.38	4.700	116.84	4.600	114.30	4.500	71308-5494	71308-5594	71308-5694		71308-5794	71308-5894	71308-5994	71308-6494	71308-6594	71308-6			