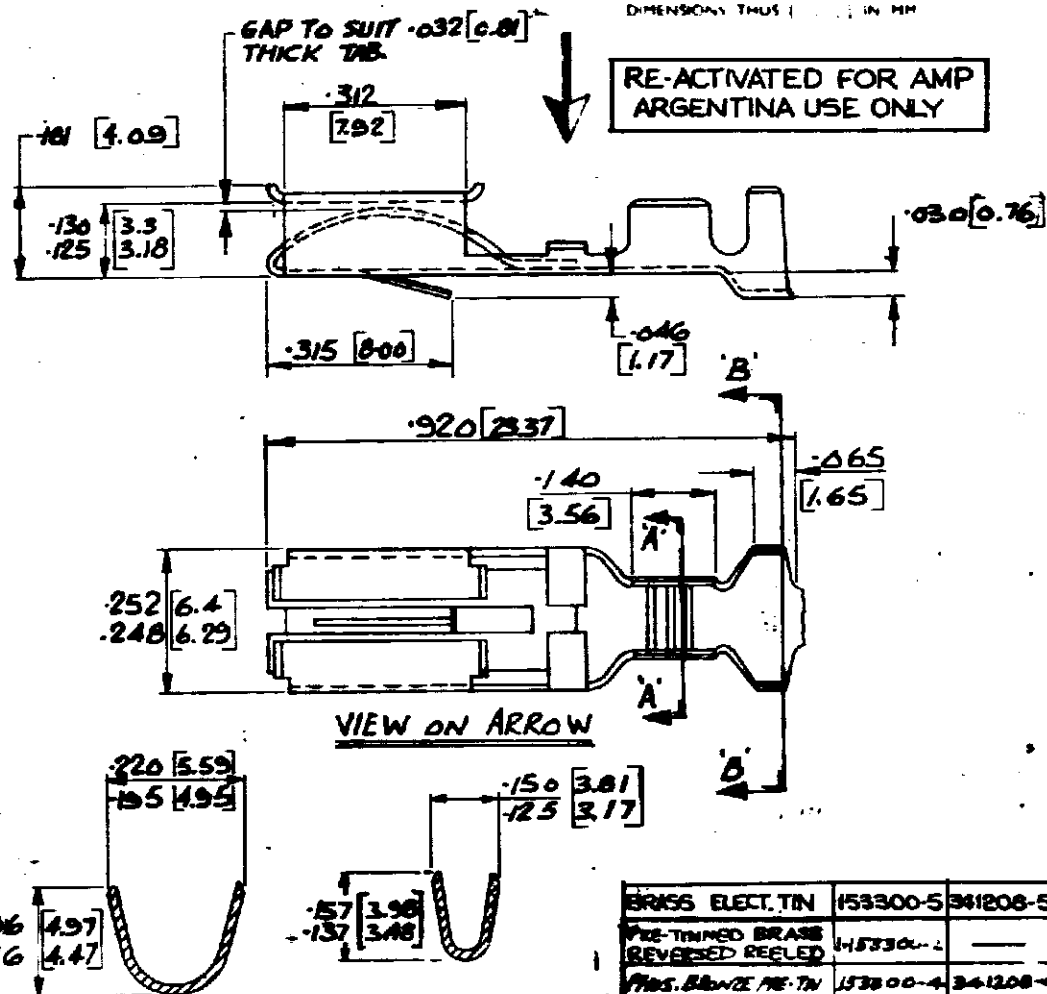


NUMBER C/53300

90 ANGLE (AMERICAN) PROJECTION

DIMENSIONS IN INCHES - DO NOT SCALE PRINT  
DIMENSIONS THUS [ ] IN MM



SECTION B-B

M	-2 OBSOLETE	ABH	5055	27988
L	RE-ACTIVATED & -5 ADDED	NPK	4608	20582
K	OBSOLETE	NW		20584

J L.P. NOS ADDED PW 7385  
H 1-2 ADDED KS 7801

SECTION A-A

BRASS ELECT. TIN	153300-5	341208-5
PRE-TINNED BRASS REVERSED REEL	153300-2	
PHOS. BRONZE RE-TIN	153300-4	341208-4
PHOS. BRONZE	153300-8	341208-3
PRE-TINNED BRASS	153300-2	341208-2
BRASS	153300-1	341208-1
MATERIAL FINISH	STRIP	L.P. PART NO

© AMP OF GREAT BRITAIN LTD 1972  
CUSTOMER COPY REFERENCE ONLY



012 [0.30]  
014 [0.35] [53300-1]  
4:1 E A C-153300  
SPRING RECEPTACLE