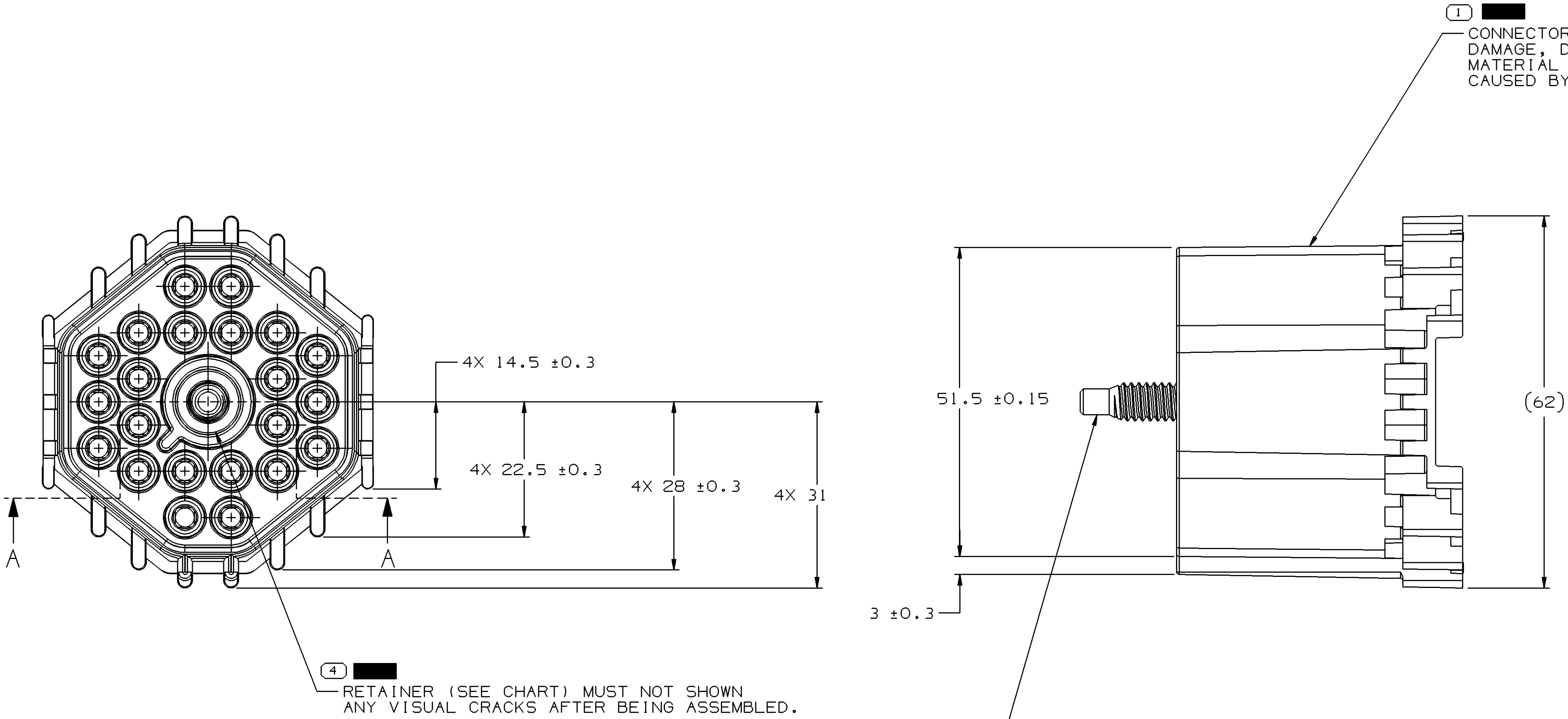
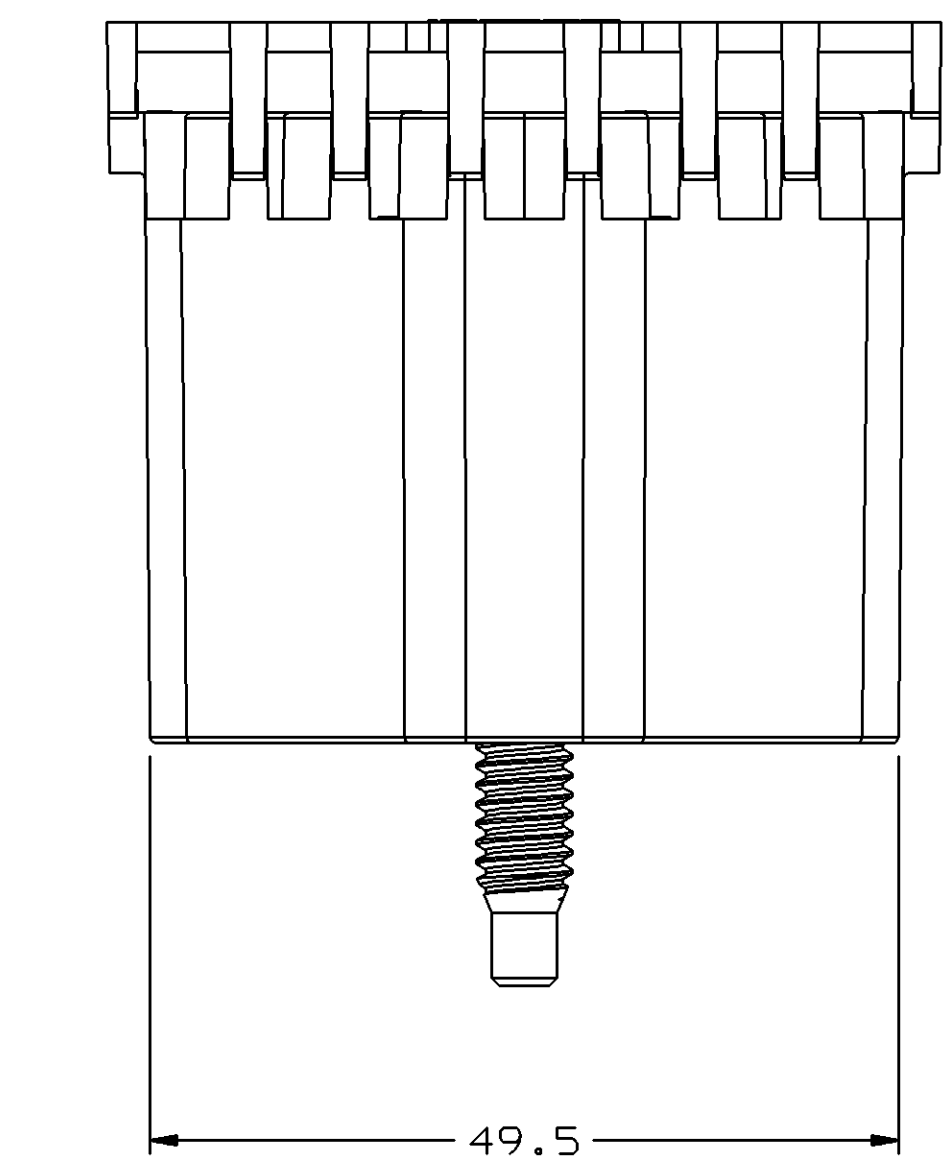
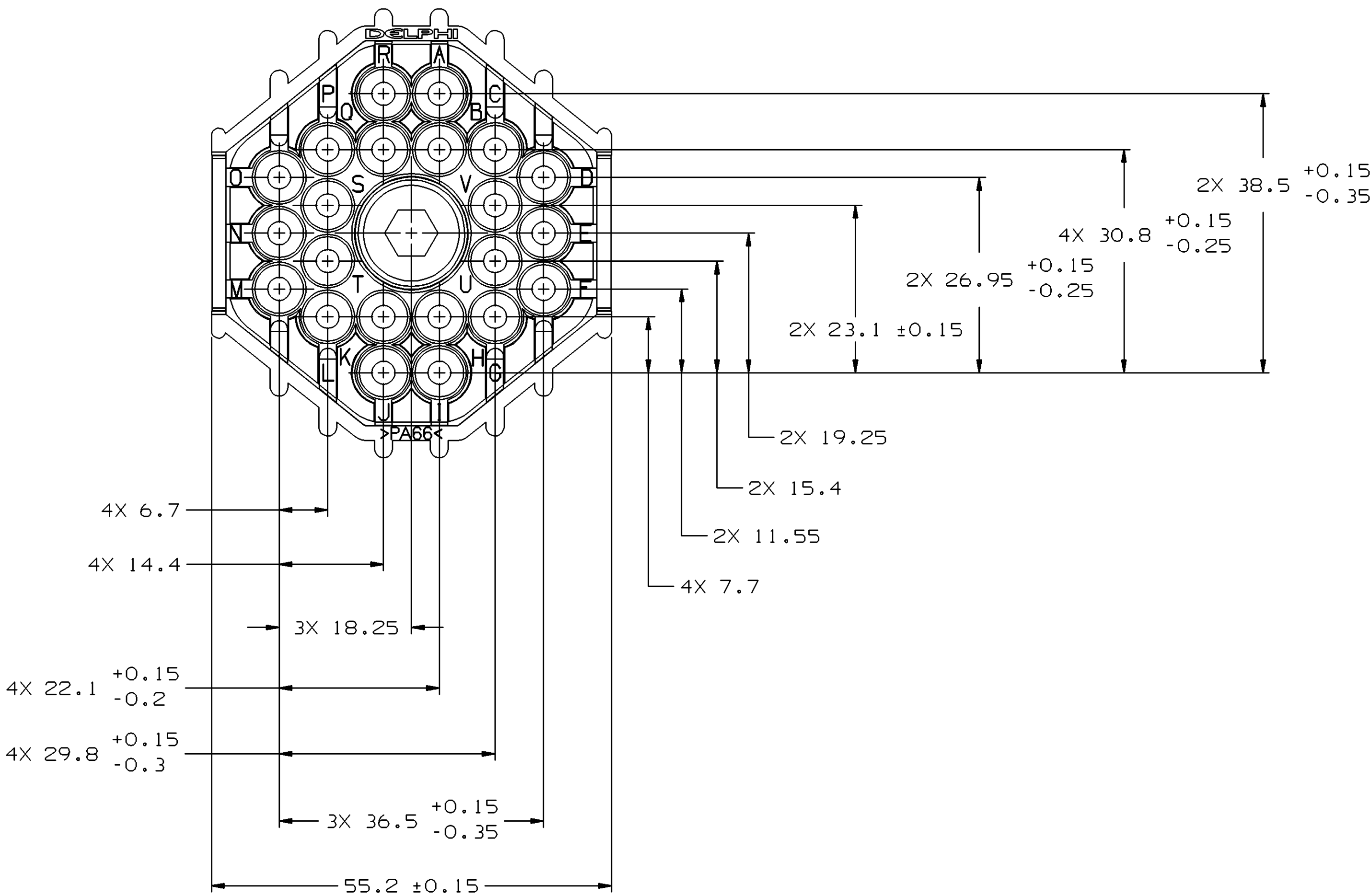


SYMBOL DEFINITION			MISSING SYMBOLS	
A DIMENSION WITHOUT AN INSPECTION REPORT SYMBOL DOES NOT REQUIRE INSPECTION. IT MAY BE CONTROLLED ON THE INDIVIDUAL COMPONENT DRAWING.			NO MISSING SYMBOL NUMBER	
TOTAL NO OF INSPECTIONS REQUIRED			4	
LAST NO. USED			4	

DATE		STG	REV	N/P	CHG	ZONE	REVISION HISTORY		AUTH	DR	APVD	1	2
25JAO0	R	01	-	-	-	-	ALL PARTS - REDRAWN TO PD, ADDED DIMS, NOTES & MARKS. REMOVED DIM & NOTE.		198179	RB	GMC	DN	
25JAO0	R	02	-	-	-	-	ALL PARTS - REVISED DIM & ADDED NOTE		199292	GMC	GMC	DN	
25MY04	R	03	-	-	-	-	12020005 & 12077378 - RESTRICTED; 15492521 & 15492576 - RELEASED		255661	GPS	JAA	MGR	
180C05	R	04	-	-	-	-	12077378 - OBSOLETE		273276	JTV	AUG	MGR	
03N005	R	05	-	-	-	-	12020005 - OBSOLETE		273752	JTV	AUG	MGR	

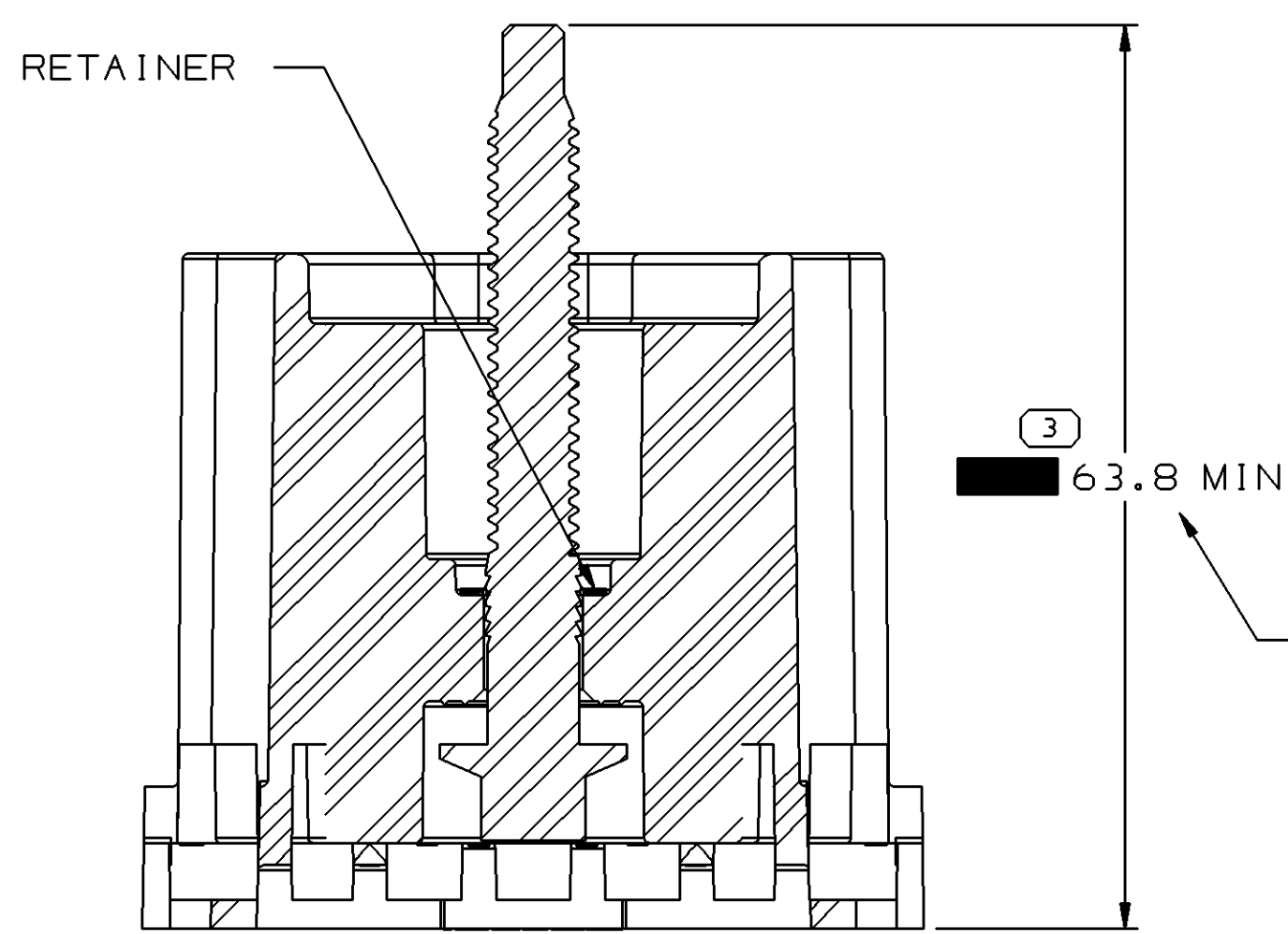


(1) CONNECTOR (SEE CHART) MUST NOT SHOW ANY DAMAGE, DEFORMATION OR DISCOLORATION OF THE MATERIAL DUE TO EXCEEDING THE YIELD POINT, CAUSED BY THE ASSEMBLY OF THE COMPONENTS.



(4) RETAINER (SEE CHART) MUST NOT SHOWN ANY VISUAL CRACKS AFTER BEING ASSEMBLED.

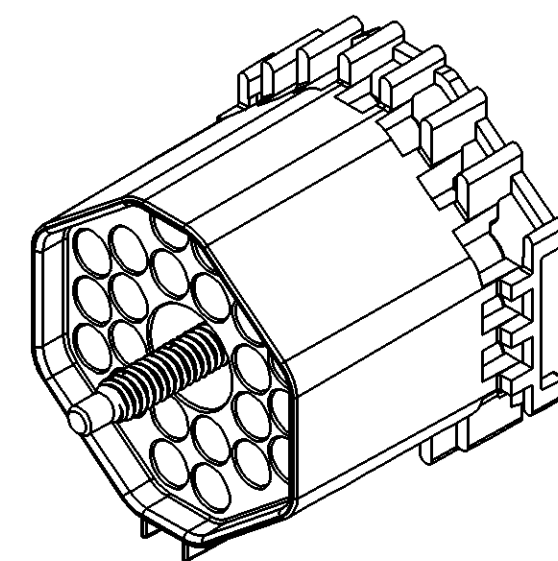
(2) BOLT (SEE CHART) MUST NOT SHOW ANY VISUAL CRACKS, DAMAGE, DEFORMATION OR SCORE MARKS AFTER BEING ASSEMBLED.



DIMENSION TO BE MEASURED WITH BOLT AND RETAINER ALLOWED TO REST AGAINST CONNECTOR IN POSITION SHOWN.

NOTES

- UNLESS OTHERWISE SPECIFIED AND/OR INDICATED: DIMENSIONS ARE TO FACE OF VIEW SHOWN AND AUTOMATICALLY ROUNDED BY COMPUTER FOR INSPECTION. (SEE MATH MODEL FOR PRECISE DIMENSIONS.) FOR ALL OTHER DIMENSIONS NOT SHOWN BUT REQUIRED FOR TOOL BUILD, SEE MATH MODEL FOR PRECISE TOOL PATH DATA.
- THIS ASSEMBLY IS TO BE BOLTED TO 12015101 CONN. BODY ASM. WITH A TORQUE ON THE BOLT OF 5.65 N·M TO 7.91 N·M.
- SEALING CODE 3 - DESIGN WILL PASS SALT FOG AND IMMERSION TEST AFTER CONDITIONING AS SPECIFIED IN ESA-644 (WEATHER-PACK), ESA-710 (METRI-PACK), ESA-650 (UNDERHOOD MICRO-PACK), C-4006 (WORLD CONNECTOR), ETC. - WHEN MATED TO MATING PART OR EQUIVALENT
- MATING COMPONENTS OR EQUIVALENT: CONNECTOR - SEE CHART. TERMINAL 12033674
- THIS PART ACCEPTS THE FOLLOWING COMPONENTS OR EQUIVALENT: SECONDARY TERMINAL LOCK 12010852 (2 REQ'D).
- ITEMS INDICATED BY " " ARE CONTROLLED FOR THE COMPONENT ASSEMBLY. ALL OTHER ITEMS ARE CONTROLLED BY THE INDIVIDUAL COMPONENT DRAWING.



15492576	01	-		12077377	NAT	15492515	15492512	12077375
15492521	01	-		12015923	BLK	15492515	15492512	12020193
12077378	A4	-	OBSOLETE	12077377	NAT	12010853	12004737	12077375
12020191	A	-	OBSOLETE	12020181	BLU	12010853	12004737	
12020005	A4	-	OBSOLETE	12015923	BLK	12010853	12004737	12020193
PART NO	REV	N/P	STATUS	CONN. PART NO.	CONN. COLOR	BOLT	RETAINER	MATING PART

DIMENSIONAL RANGE (MM)		CHART	
FROM	TO	20	30
20	30	30	70
30	70	70	100
70	100	100	150
100	150	150	200
150	200	200	250
200	250	250	300
250	300	300	400
300	400	400	
TOLERANCE UNLESS OTHERWISE SPECIFIED		ANGULAR TOLERANCE 12°	
1±0.15		±0.2	
±0.2		±0.3	
±0.3		±0.4	
±0.4		±0.5	
±0.5		±0.6	
±0.6		±0.8	
±0.8		±1	
±1		±1.2	

THIRD ANGLE PROJECTION		DO NOT SCALE	
USE MATH DATA		USE MATH DATA	

DELPHI	
DELPHI PACKARD ELECTRIC SYSTEMS WARREN, OH	
DR	DATE
APVD1 R. BARBOZA	25JAO0
APVD2 G. MACIAS	25JAO0
APVD3 D. NAVARRO	28JAO0
APVD4	
APVD5	
SUBSTANCES OF CONCERN AND RECYCLED CONTENT PER DELPHI 10949001	
MATERIAL SEC. CHART	
DRAWING NAME TAXI CONN M W/P SHD SLD	
DRAWING NUMBER 12077379	
SIZE A0	SCALE 2:1
FRAME NO 1	SHEET NO 1
STG R	REV 05
N/P -	