

**Have a Question?**  
 Chat with a Product Information Specialist

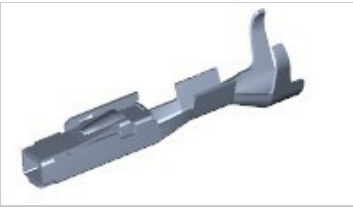


What can we help you find?

[Home](#) > [Products](#) > [Automotive](#) > [Product Feature Selector](#) > Product Details

# 1452665-3 Product Details

[Share](#) [Print](#) [Email](#)



## Multiple Contact Point (MCP) & MCON Contact Systems

MCON 1.2 - LL (SWS)

**1452665-3**

TE Internal Number: 1452665-3

**Active**

[View 3D PDF](#)

**Product Highlights** [View All](#)

- MCON Product Line, Multiple Contact Point (MCP) Product Line
- Wire-to-Wire
- Applies To Wire/Cable
- Contact
- Contact Type = Socket

[Pricing & Availability](#)

[Request Sample](#)

[Add to My Part List](#)

[Buy Product through Distributor](#)

[Documents](#) [Features](#) [Compliance](#)

**Product Drawings**

[MCON 1.2 LL \(LOCKING-LANCE\)](#) (PDF, English)

---

**CAD Files**

[2D Drawing](#) (DXF, Version B, ZIP)

[3D Model](#) (IGES, Version B, ZIP)

[3D Model](#) (STEP, Version B, ZIP)

---

**Product Specifications**

**Application Specification**

[Allgemeine Crimpspezifikation / GENERAL CRIMP SPEC.](#) (PDF, German)

[MCON 1.2 Contact](#) (PDF, German)

**Related Products**

Not quite the product you're looking for?

[Find Similar Products](#)

---

[View Part in Product Feature Selector](#)

---

[View Mating Products](#) (5)

---

[View Terminals](#) (1)

---

[View Seals](#) (3)

---

[Check for Tooling](#)

[Feedback](#)

**Corporate Information**

- [About TE](#)
- [Investors](#)
- [News Room](#)
- [Supplier Portal](#)
- [Careers](#)
- [Terms & Conditions](#)
- [Privacy Policy](#)
- [Global Accessibility Statement](#)

**Quick Links**

- [Distributor Inventory](#)
- [Product Cross Reference](#)
- [Documents & Drawings](#)
- [Product Compliance Support Center](#)
- [Site Map](#)

**Customer Support**

- [Email or Chat With Us](#)
- [Find a Phone Number](#)
- [Knowledge Base](#)
- [Manage Your Account](#)

**Keep Me Informed**

