

THIS DRAWING IS UNPUBLISHED.

RELEASED FOR PUBLICATION

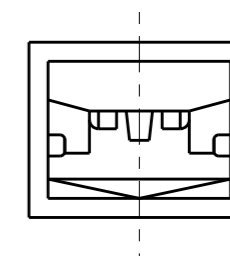
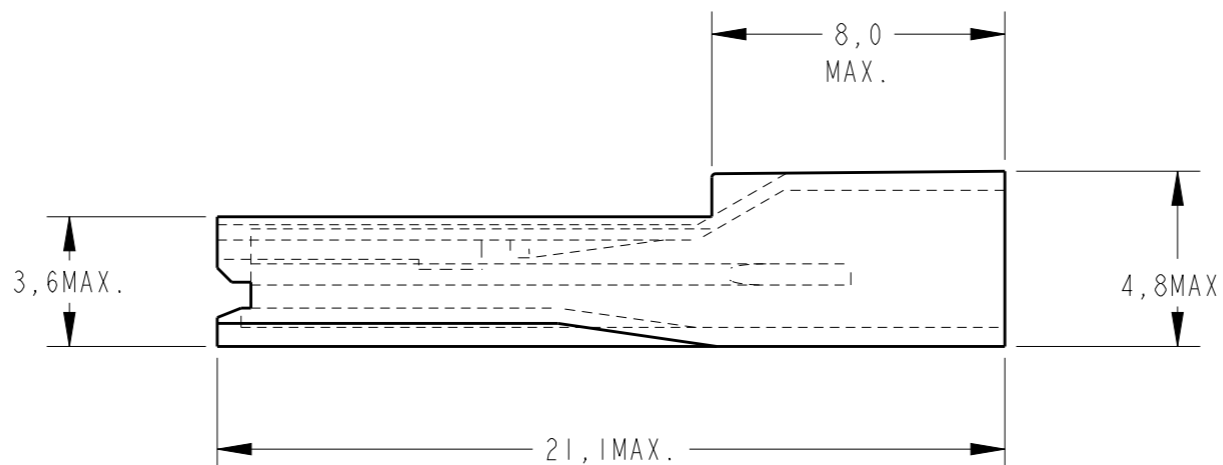
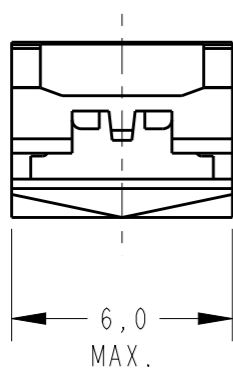
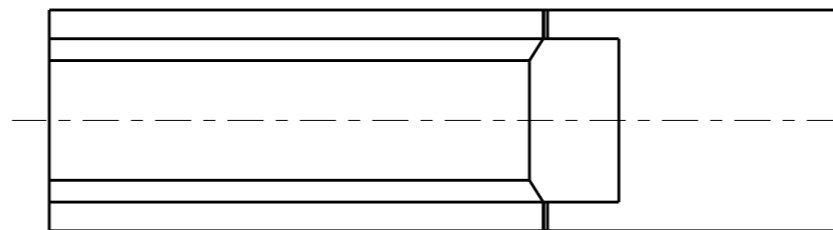
20

© COPYRIGHT 20 BY -

ALL RIGHTS RESERVED.

REVISIONS

| P | LTR | DESCRIPTION | DATE | DWN | APVD |
|---|-----|-----------------------|-----------|-----|------|
| | F1 | REV. BY ECO 16-003733 | 11MAR2016 | HC | WLS |
| | F2 | REV. BY ECO 18-012656 | 12AUG2018 | HC | WLS |
| | | | | | |



△ - MATÉRIA PRIMA CONFORME ESPECIFICAÇÃO IEC 60335-1, GWT 750°, SEM CHAMA.
 RAW MATERIAL ACC. TO SPEC IEC 60335-1, GWT 750°C, WITHOUT FLAME.

| | | | |
|----------|------------------|------------------------|-------------|
| | NATURAL | △ - PA 6.6 V-0 | 141628-5 |
| | PRETO / BLACK | PA 6.6 HEAT STABILIZED | 141628-4 |
| OBSOLETE | AMARELO / YELLOW | PA 6.6 94 V2 | 141628-3 |
| | NATURAL | PA 6.6 94 V2 | 141628-2 |
| OBSOLETE | NATURAL | PA 6.6 94 V1 | 141628-1 |
| | FINISH | MATERIAL | PART NUMBER |

| | | | | |
|---|--|------------------------------------|--------------------------------------|----------------|
| THIS DRAWING IS A CONTROLLED DOCUMENT. | | DWN H.C. CANTER 29 JAN 2016 | TE Connectivity | |
| DIMENSIONS: mm | | CHK W.L. STEFANI 29 JAN 2016 | | |
| TOLERANCES UNLESS OTHERWISE SPECIFIED: | | APVD - 29 JAN 2016 | NAME FASTON REC. HSG. .110 SERIES | |
| 0 PLC ±- 1 PLC ±0,3 2 PLC ±- 3 PLC ±- 4 PLC ±- ANGLES ±- | | PRODUCT SPEC 108-37094 | RESTRICTED TO | |
| MATERIAL | | APPLICATION SPEC - | SIZE A3 | CAGE CODE - |
| FINISH | | WEIGHT - | DRAWING NO C-141628 | SCALE 5:1 |
| | | CUSTOMER DRAWING | SHEET 1 OF 1 | REV F2 |