

FEATURES AND SPECIFICATIONS

Features and Benefits

- Wire-to-wire plug
- Terminal Position Assurance (TPA) allows the terminal to be fully seated in the housing assuring that it will not back out during high vibration applications
- TPA key is sold individually to meet customer-specific needs
- Optional snap-on ears for panel mounting
- Contrasting color (white) TPA/CPA for high visibility

Reference Information

Product Specification: PS-5556-0003

Packaging: Tray and bag

UL File No.: E29179

CSA File No.: LR19980

TUV License No.: R75142

Use With: Standard Mini-Fit terminals

Mates With: [30067](#) housing

Designed In: Millimeters

Mechanical

Contact Insertion Force: 1.5kg max.
Contact Retention to Housing: 3.0kg min.
Wire Pull-Out Force: 9.0kg min.
Mating Force: 0.7kg (1.54 lb) max.
Unmating Force: 0.35kg (0.7 lb) min.
Normal Force: 200g min.
Durability: 30 cycles

Physical

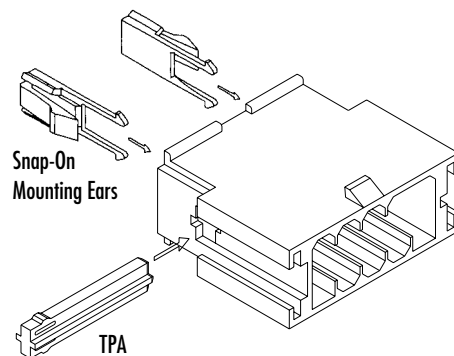
Housing: Black polyester, UL 94V-0
Contact: Brass or Phosphor Bronze
Plating: Tin, select Gold and overall Gold
Operating Temperature: -40 to +105°C



4.20mm (.165") Pitch Mini-Fit, TPA™ Plug

30068

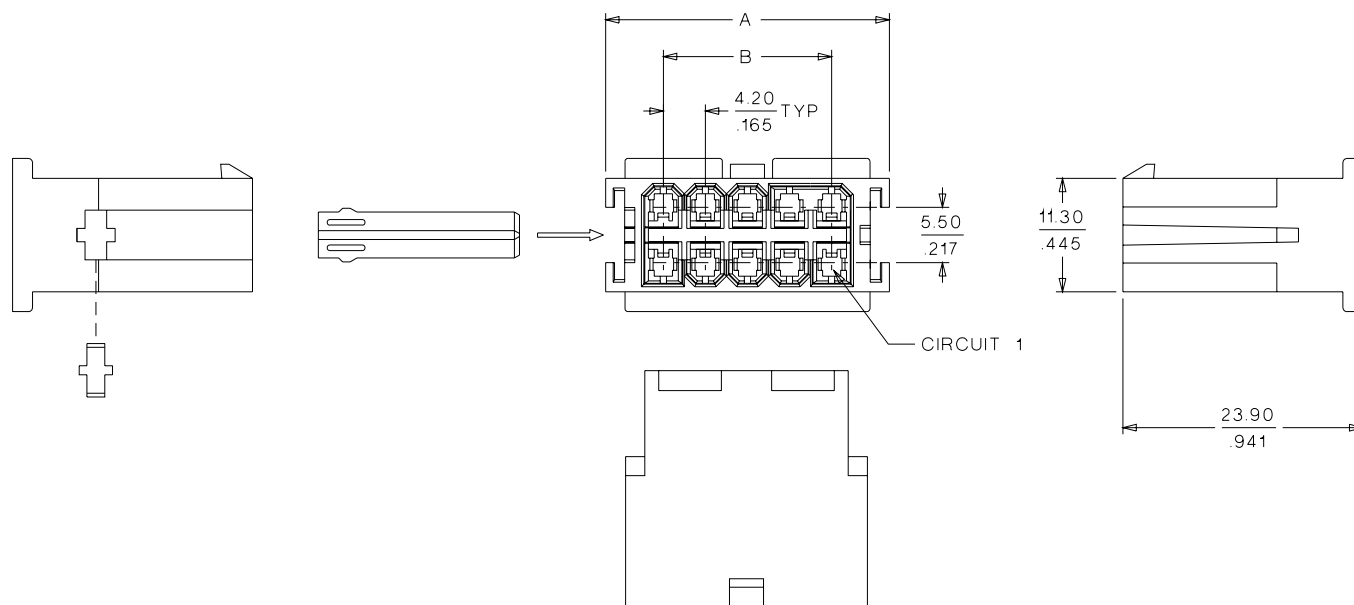
Dual Row with Secondary Terminal Retention



Power Connectors

F

CATALOG DRAWINGS (FOR REFERENCE ONLY)



ORDERING INFORMATION AND DIMENSIONS

Circuits	Plug Order No.	Terminal Position Assurance	Dimension		Snap-on Panel Mounting Ears 43130
			A	B	
2	• 15-97-6021*	• 15-97-9041†	11.86 (.467)		43130-0001‡
4	• 15-97-6041	• 15-97-9041	11.86 (.467)	8.01 (.315)	
6	• 15-97-6061	• 15-97-9061	16.08 (.633)	12.21 (.481)	
8	• 15-97-6081	• 15-97-9081	20.27 (.798)	16.41 (.646)	
10	• 15-97-6101	• 15-97-9101	24.26 (.963)	20.61 (.811)	
12	• 15-97-6121	• 15-97-9121	28.68 (1.129)	24.81 (.977)	
16	• 15-97-6161	• 15-97-9161	37.06 (1.459)	33.21 (1.307)	

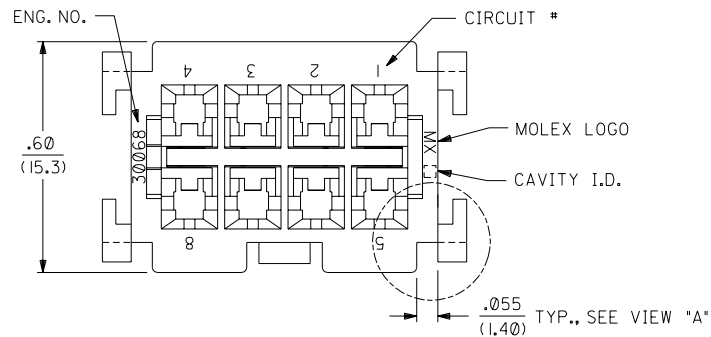
• US Standard Product, available through Molex franchised distributors

* Receptacles have side pull tabs for use with strain reliefs

† The same TPA is used for both the 2 and 4 circuit plugs

‡ Two required per plug

13	12	11	10	9	8	7	6	30068	4	3	2	1
CKT. SIZE	ENG. NO.	EDP. NO.	DIM. "A" REF.	DIM. "B"								
2	30068-2	15-97-6021	----	.467 (11.86)								
4	30068-4	15-97-6041	.165 (4.20)	.467 (11.86)								
6	30068-6	15-97-6061	.331 (8.40)	.633 (16.08)								
8	30068-8	15-97-6081	.496 (12.60)	.798 (20.27)								
10	30068-10	15-97-6101	.661 (16.80)	.963 (24.46)								
12	30068-12	15-97-6121	.827 (21.00)	1.129 (28.68)								
14	30068-14	NOT TOOLED	.992 (25.20)	1.294 (32.87)								
16	30068-16	15-97-6161	1.157 (29.40)	1.459 (37.06)								
SEE SHT. 2 FOR 18 THRU 24 CKT'S.												

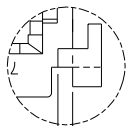


- NOTES:**
1. MATERIAL: UNFILLED POLYESTER, U.L. 94V-0.
 2. COLOR: MOLDED BLACK.
 3. HOUSING TO BE USED WITH TERMINAL #5558.
 4. HOUSING MATES WITH RECEPTACLE #30067.
 5. PRODUCT SPECIFICATION: PS-5556-003.
 6. 2 THRU 10 AND 14 THRU 24 CKT. HOUSING TO BE USED WITH T.P.A. NO. 30072-*. 12 CKT. HOUSING TO BE USED WITH T.P.A. NO. 43568-12*. REFER TO DRAWING SDMS-30068-1* FOR ADDITIONAL INFORMATION.

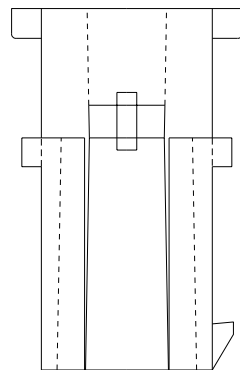
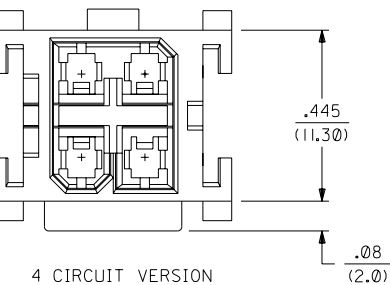
LEGEND:

30068 - *

CIRCUIT SIZE (2-24)



VIEW "A"



.114±.014
(2.90±0.36)

.445
(11.30)

.217±.014
(5.51±0.36)

.20
(5.1)
REF.

.165
(4.20)

"A" REF.

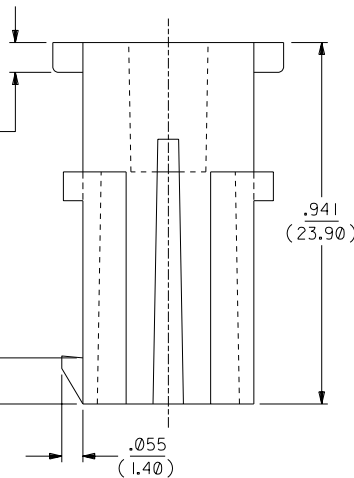
"B"

.151
(3.84)

.08
(2.0)
TYP.

.08
(2.0)
TYP.

.120
(3.05)



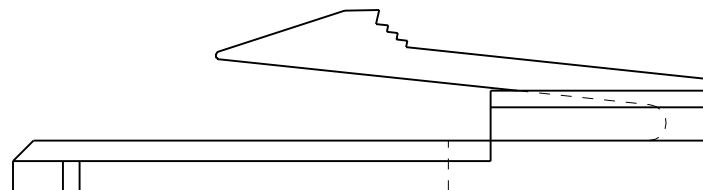
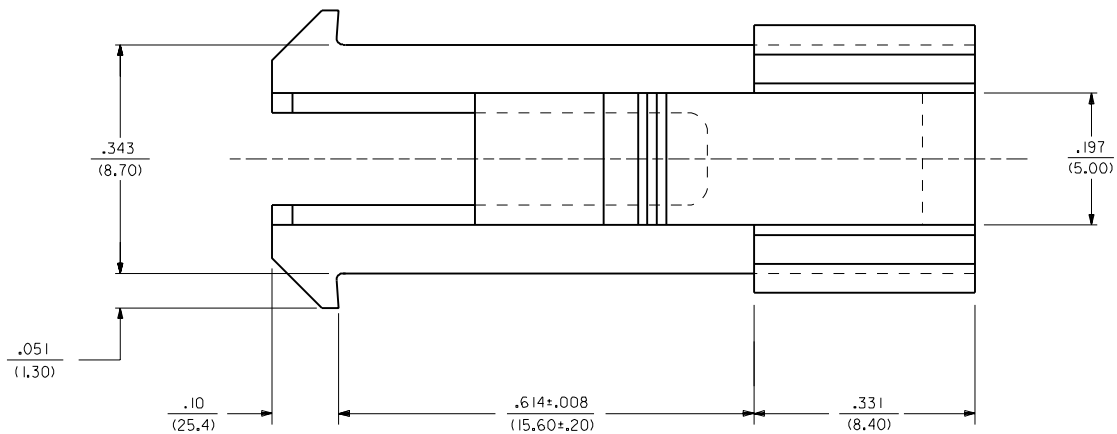
SEE SHT. #3 FOR PARTS WITH MOUNTING EARS

R	REV. PS NOTE UCP2003-0367 8/30/2002 SAMIEC
PI	REVISED UCR1999-0714 99/04/21 L.MOSLEY
P	REV. NOTE 3 ECN U60862 GEP 1-23-96
O	ADD PANEL STOPS ECN U31617 GEP 11-1-93
NI	REV. NOTE 2 ECN U30660 GEP 4-29-93
N	REV. PULL TABS ECN U30510 GEP 4-1-93
M2	ADDED 4 CKT. VIEW PER ECN U30319 GEP 3-1-93
M1	ADDED DIM'S PER ECR U21086 7-23-92 RJF
M	REV. MATERIAL PER ECR U20139 GEP 4-14-92 RJF
L	REMOVED .182 ECR U20278 GEP 2-12-92 RJF
K	ADDED 18-24 CKT'S ECN U20035 GEP 1-14-92 RJF
J	INCR. PULL TABS ECR U20000 1-7-92 RJF
H	ADD COLOR OPTION ECN U12041 10-17-91 RJF
G	REV. PROD. SPEC. ECN U11690 GEP 8-15-91 RJF
F	REVISED DWG. PER ECR # U00033 TGP/DMF 1-22-90
E	REDRAWN ON CAD PER ECR # U90961 TGP/DMF 10-26-89

3	A
2	PI
1	R

MFG, SH, REV, LTR, REVISIONS

DIMENSIONS SHOWN (METRIC) INCH UNLESS OTHERWISE SPECIFIED TOLERANCES: ANGULAR ± 1/2°		▽ = 0 ▽ = 0		REVISION ONLY ON CAD SYSTEM													
<table border="1"> <thead> <tr> <th></th> <th>INCH</th> <th>METRIC</th> </tr> </thead> <tbody> <tr> <td>3 PLACE</td> <td>± .010</td> <td>---</td> </tr> <tr> <td>2 PLACE</td> <td>± .014</td> <td>± 0.25</td> </tr> <tr> <td>1 PLACE</td> <td>---</td> <td>± 0.36</td> </tr> </tbody> </table>			INCH	METRIC	3 PLACE	± .010	---	2 PLACE	± .014	± 0.25	1 PLACE	---	± 0.36	TITLE MINI-FIT T.P.A. PLUG HOUSING 2 THRU 24 CIRCUITS, WITH OR WITHOUT MOUNTING EARS.			
	INCH	METRIC															
3 PLACE	± .010	---															
2 PLACE	± .014	± 0.25															
1 PLACE	---	± 0.36															
DRAFT WHERE APPLICABLE MUST REMAIN WITHIN DIMENSIONS		SHEET NO. DATE MOLEX INCORPORATED 1 OF 3 10/26/89															
PART NO. SEE CHART		DRWG. NO. SD-30068-*															
DRWG. BY DMF APP'D. BY SC		FILE NAME 530068.DGN THIS DRAWING CONTAINS INFORMATION THAT IS PROPRIETARY TO MOLEX INC. AND SHOULD NOT BE USED WITHOUT WRITTEN PERMISSION															



1) MATERIAL: UNFILLED POLYESTER, U.L. 94V-0, COLOR: BLACK.
2) PART IS FOR USE WITH PLUG HOUSING 30068.

[illegible]