


Have a Question?
 Chat with a Product Information Specialist

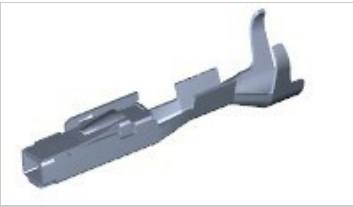


What can we help you find? 

[Home](#) > [Products](#) > [Automotive](#) > [Product Feature Selector](#) > [Product Details](#)

1452665-2 Product Details

[Share](#) [Print](#) [Email](#)



Multiple Contact Point (MCP) & MCON Contact Systems

MCON 1.2 - LL (SWS)

1452665-2 

TE Internal Number: 1452665-2

 **Active**

 [View 3D PDF](#)

Product Highlights [View All](#)

- MCON Product Line, Multiple Contact Point (MCP) Product Line
- Wire-to-Wire
- Applies To Wire/Cable
- Contact
- Contact Type = Socket

[Pricing & Availability](#) 


[Request Sample](#) 


[Add to My Part List](#) 


[Buy Product through Distributor](#) 


[Documents](#) [Features](#) [Compliance](#)


Product Drawings

 [MCON 1.2 LL \(LOCKING-LANCE\)](#) (PDF, English)

CAD Files 


 [2D Drawing](#) (DXF, Version B, ZIP)


 [3D Model](#) (IGES, Version B, ZIP)

 [3D Model](#) (STEP, Version B, ZIP)

Product Specifications

Application Specification

 [Allgemeine Crimpspezifikation / GENERAL CRIMP SPEC.](#) (PDF, German)

 [MCON 1.2 Contact](#) (PDF, German)

Related Products

Not quite the product you're looking for?

[Find Similar Products](#)

[View Part in Product Feature Selector](#)

[View Mating Products \(5\)](#)

[View Terminals \(1\)](#)

[View Seals \(3\)](#)

[Check for Tooling](#)

[Feedback](#)

Corporate Information

- [About TE](#)
- [Investors](#)
- [News Room](#)
- [Supplier Portal](#)
- [Careers](#)
- [Terms & Conditions](#)
- [Privacy Policy](#)
- [Global Accessibility Statement](#)

Quick Links

- [Distributor Inventory](#)
- [Product Cross Reference](#)
- [Documents & Drawings](#)
- [Product Compliance Support Center](#)
- [Site Map](#)

Customer Support

- [Email or Chat With Us](#)
- [Find a Phone Number](#)
- [Knowledge Base](#)
- [Manage Your Account](#)

Keep Me Informed

