

FEATURES AND SPECIFICATIONS

Features and Benefits

- Sizes 2 to 25 circuits
- Preloaded, single piece construction allows for fully automated termination
- Packaged in plastic tubes to allow for automated manufacturing and to minimize product handling
- End-to-end and/or side-to-side stackable for single or dual row connections to a 2.54mm (.100") pitch grid pin field

Reference Information

Packaging: Tube
 UL File No.: E29179
 CSA File No.: LR19980
 Mates With: 8624, 42375, 42377 and 70203
 Use With Molex Cable: 7307, 7767, 8996, 8997, 24226, 24241, 24369 and 24389
 Designed In: Inches

Electrical

Voltage: 250V
 Current: 1.2A—28 AWG; 1.8A—26 AWG
 3.0A—24 AWG; 3.0A—22 AWG
 Contact Resistance: 15mΩ max.
 Dielectric Withstanding Voltage: 600V AC rms
 Insulation Resistance: 10,000 MΩ min.

Mechanical

Contact Insertion Force: 0.32 lb per circuit
 Contact Retention to Housing: 4 lb min.
 Terminal Pull-Out Force: 4 lb for 15 seconds
 Mating Force: 8.0 oz max. per circuit
 Unmating Force: 1.0 oz min. per circuit
 Durability: 25 cycles Tin and 50 cycles Gold

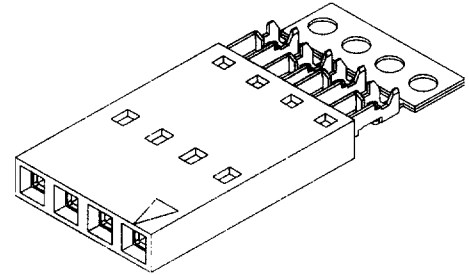
Physical

Housing: Black glass-filled polyester, UL 94V-0
 Contact: Phosphor Bronze
 Plating: See Table
 Temperature: -40 to +120°C
 Insulation and Wire Gauge Range: .053" max. with 22 to 28 AWG stranded discrete wire or flat ribbon cable
 Pin Height: .320" max. to .200" min. (measured from top of housing or PCB to top of pin)

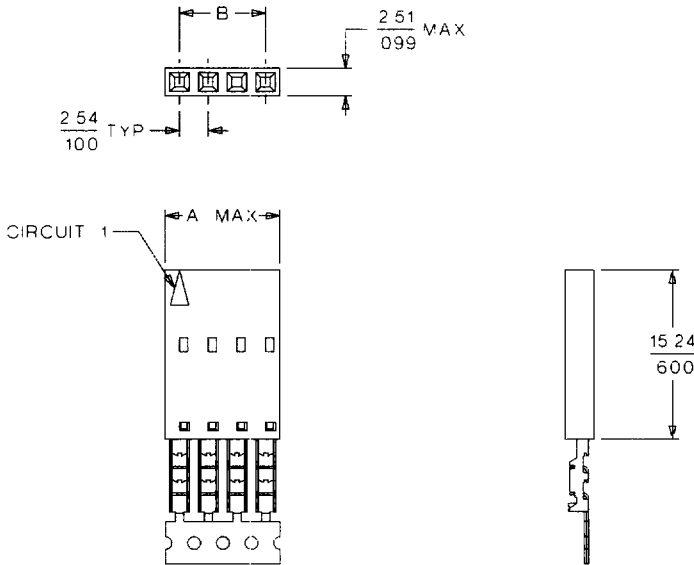


**2.54mm (.100") Pitch
 C-Grid SL™
 Insulation Displacement
 Connector Assembly**

**70400
 Female, Single Row
 Version A, Nonpolarized**



Not for Use With C-Grid III™ Components



Wire Gauge Chart	
Code Stamped on Terminals	Wire Gauge (AWG)
A	24
B	26
C	28
D	22

Note: 2 circuit assemblies supplied as grouped pairs

Plating Code (Stripe on Carrier Strip)	
Plating	Color
Tin/Lead	None
15µ" Gold	Yellow
30µ" Gold	Red

Delivered on a carrier with 20 pieces per strip.
Actual Size **Universal Polarizing Pin 40713-1**
 Order No. 15-04-0292

ORDERING INFORMATION AND DIMENSIONS

Wire Accommodation (AWG)	Order No.		
	15µ" Gold	30µ" Gold	150µ" Tin/Lead
28	14-56-2XX5	14-56-3XX2	14-60-0XX5
26	14-56-2XX3	14-56-2XX9	14-60-0XX3
24	• 14-56-2XX1	14-56-2XX7	14-60-0XX1
22	14-56-7XX4	14-56-7XX9	14-56-6XX9

Replace XX with no. of circuits, 02-25

Circuits	Dimension	
	A	B
2	5.05 (1.99)	2.54 (.100)
3	7.59 (2.99)	5.08 (.200)
4	10.13 (.399)	7.62 (.300)
5	12.67 (.499)	10.16 (.400)
6	15.21 (.599)	12.70 (.500)
7	17.75 (.699)	15.24 (.600)

Circuits	Dimension	
	A	B
8	20.29 (.799)	17.78 (.700)
9	22.83 (.899)	20.32 (.800)
10	25.37 (.999)	22.86 (.900)
11	27.91 (1.099)	25.40 (1.000)
12	30.45 (1.199)	27.94 (1.100)
13	32.99 (1.299)	30.48 (1.200)

Circuits	Dimension	
	A	B
14	35.53 (1.399)	33.02 (1.300)
15	38.07 (1.499)	35.56 (1.400)
16	40.61 (1.599)	38.10 (1.500)
17	43.15 (1.699)	40.64 (1.600)
18	45.69 (1.799)	43.18 (1.700)
19	48.23 (1.899)	45.72 (1.800)

Circuits	Dimension	
	A	B
20	50.77 (1.999)	48.26 (1.900)
21	53.31 (2.099)	50.80 (2.000)
22	55.85 (2.199)	53.34 (2.100)
23	58.39 (2.299)	55.88 (2.200)
24	60.93 (2.399)	58.42 (2.300)
25	63.47 (2.499)	60.96 (2.400)

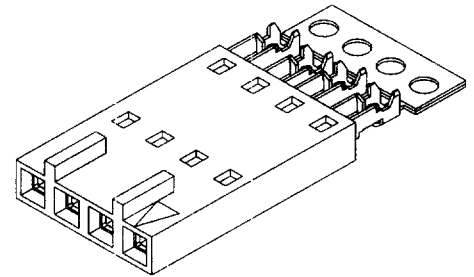
• US Standard Product, available through Molex franchised distributors
 □ Highlighted area denotes preferred standard product, usually available with shorter lead times



2.54mm (.100") Pitch C-Grid SL™ Insulation Displacement Connector Assembly

C-Grid
A

70400 Female, Single Row Version C, Front Ribs



Features and Benefits

- Sizes 2 to 25 circuits
- Preloaded, single piece construction allows for fully automated termination
- Packaged in plastic tubes to allow for automated manufacturing and to minimize product handling
- Front polarizing ribs prevent pin damage during disconnect; housing cannot be twisted off pins
- Mates with polarized nonlatching headers (not in catalog)

Reference Information

Packaging: Tube
UL File No.: E29179
CSA File No.: LR19980
Mates With: 70544, 70546, 70554 and 70556
Use With Molex Cable: 7307, 7767, 8996, 8997, 24226, 24241, 24369 and 24389
Designed In: Inches

Electrical

Voltage: 250V
Current: 1.2A—28 AWG; 1.8A—26 AWG
3.0A—24 AWG; 3.0A—22 AWG
Contact Resistance: 15mΩ max.
Dielectric Withstanding Voltage: 600V AC rms
Insulation Resistance: 10,000 MΩ min.

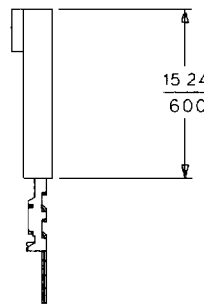
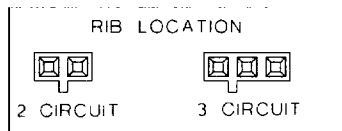
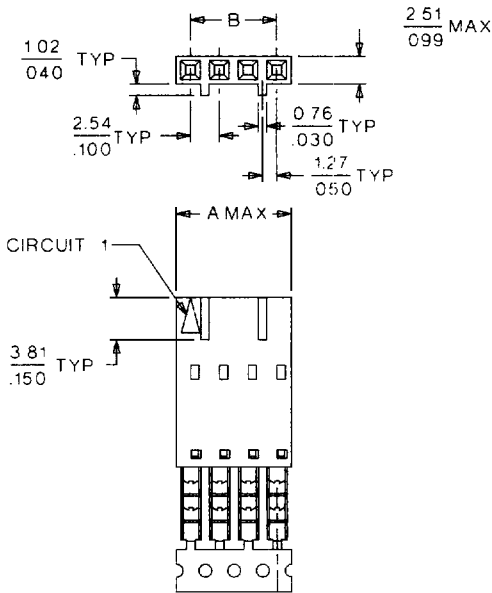
Mechanical

Terminal Pull-Out Force: 4 lb for 15 seconds
Mating Force: 8.0 oz max.
Unmating Force: 1.0 oz min.

Physical

Housing: Black glass-filled polyester, UL 94V-0
Contact: Phosphor Bronze
Plating: See Table
Temperature: -40 to +120°C
Insulation and Wire Gauge Range: .053" max. with 22 to 28 AWG stranded discrete wire of flat ribbon cable
Pin Height: .320" max. to .200" min. (measured from top of housing or PCB to top of pin)

Not For Use With C-Grid III™ Components



Wire Gauge Chart	
Code Stamped on Terminals	Wire Gauge (AWG)
A	24
B	26
C	28
D	22

Note: 2 circuit assemblies supplied as grouped pairs

Plating Code (Stripe on Carrier Strip)	
Plating	Color
Tin/Lead	None
15μ" Gold	Yellow
30μ" Gold	Red

Delivered on a carrier with 20 pieces per strip.
Actual Size Universal Polarizing Pin 40713-1
Order No. 15-04-0292

ORDERING INFORMATION AND DIMENSIONS

Wire Accommodation (AWG)	Order No.		
	15μ" Gold	30μ" Gold	150μ" Tin/Lead
28	14-56-3XX8	14-56-4XX4	14-60-1XX1
26	14-56-3XX6	14-56-4XX2	14-60-0XX9
24	14-56-3XX5	14-56-4XX0	14-60-0XX7
22	14-56-7XX5	14-56-8XX0	14-56-7XX0

Replace XX with no. of circuits, 02-25

Circuits	Dimension	
	A	B
2	5.05 (.199)	2.54 (.100)
3	7.59 (.299)	5.08 (.200)
4	10.13 (.399)	7.62 (.300)
5	12.67 (.499)	10.16 (.400)
6	15.21 (.599)	12.70 (.500)
7	17.75 (.699)	15.24 (.600)

Circuits	Dimension	
	A	B
8	20.29 (.799)	17.78 (.700)
9	22.83 (.899)	20.32 (.800)
10	25.37 (.999)	22.86 (.900)
11	27.91 (1.099)	25.40 (1.000)
12	30.45 (1.199)	27.94 (1.100)
13	32.99 (1.299)	30.48 (1.200)

Circuits	Dimension	
	A	B
14	35.53 (1.399)	33.02 (1.300)
15	38.07 (1.499)	35.56 (1.400)
16	40.61 (1.599)	38.10 (1.500)
17	43.15 (1.699)	40.64 (1.600)
18	45.69 (1.799)	43.18 (1.700)
19	48.23 (1.899)	45.72 (1.800)

Circuits	Dimension	
	A	B
20	50.77 (1.999)	48.26 (1.900)
21	53.31 (2.099)	50.80 (2.000)
22	55.85 (2.199)	53.34 (2.100)
23	58.39 (2.299)	55.88 (2.200)
24	60.93 (2.399)	58.42 (2.300)
25	63.47 (2.499)	60.96 (2.400)

- US Standard Product, available through Molex franchised distributors
- Highlighted area denotes preferred standard product, usually available with shorter lead times

FEATURES AND SPECIFICATIONS

Features and Benefits

- Sizes 2 to 25 circuits
- Preloaded, single piece construction allows for fully automated termination
- Packaged in plastic tubes to allow for automated manufacturing and to minimize product handling
- Back ribs maintain position of connector assembly in clips and prevent lateral movement when another assembly is removed
- End-to-end stackable inside a single row interim clip to form a larger single row connector
- Back-to-back and end-to-end stackable inside a dual row interim clip to form a dual row connector

Reference Information

Packaging: Tube
 UL File No.: E29179
 CSA File No.: LR19980
 Mates With: 70004 and 70013
 Use With Molex Cable: 7307, 7767, 8996, 8997, 24226, 24241, 24369 and 24389
 Designed In: Inches

Electrical

Voltage: 250V
 Current: 1.2A—28 AWG; 1.8A—26 AWG
 3.0A—24 AWG; 3.0A—22 AWG
 Contact Resistance: 15mΩ max.
 Dielectric Withstanding Voltage: 600V AC rms
 Insulation Resistance: 10,000 MΩ min.

Mechanical

Terminal Pull-Out Force: 4 lb for 15 seconds
 Mating Force: 8.0 oz max.
 Unmating Force: 1.0 oz min.

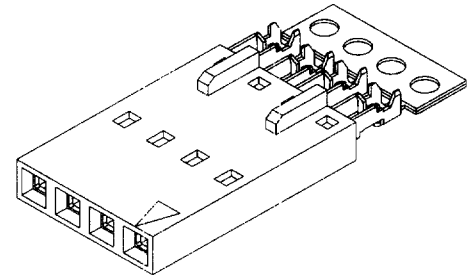
Physical

Housing: Black glass-filled polyester, UL 94V-0
 Contact: Phosphor Bronze
 Plating: See Table
 Temperature: -40 to +120°C
 Insulation and Wire Gauge Range: .053" max. with 22 to 28 AWG stranded discrete wire or flat ribbon cable
 Pin Height: .320" max. to .200" min. (measured from top of housing or PCB to top of pin)

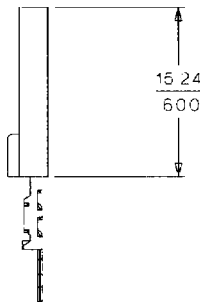
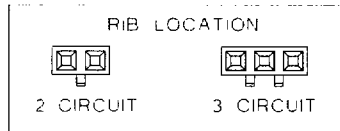
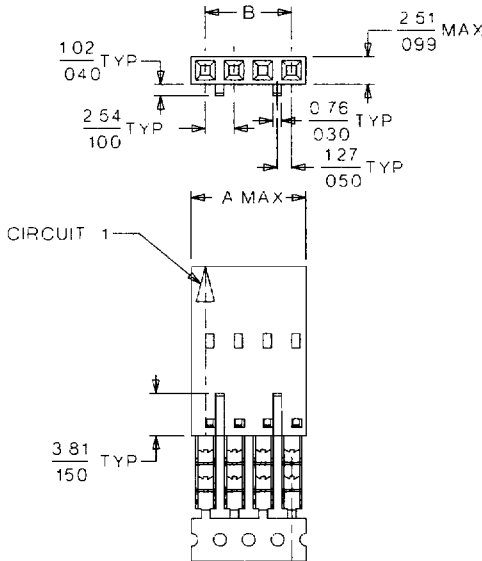


**2.54mm (.100") Pitch
 C-Grid SL™
 Insulation Displacement
 Connector Assembly**

**70400
 Female, Single Row
 Version D, Back Ribs**



Not For Use With C-Grid III™ Components



Wire Gauge Chart	
Code Stamped on Terminals	Wire Gauge (AWG)
A	24
B	26
C	28
D	22

Note: 2 circuit assemblies supplied as grouped pairs

Plating Code (Stripe on Carrier Strip)	
Plating	Color
Tin/Lead	None
15μ" Gold	Yellow
30μ" Gold	Red

Delivered on a carrier with 20 pieces per strip.

Actual Size **Universal Polarizing Pin 40713-1**
 Order No. 15-04-0292

ORDERING INFORMATION AND DIMENSIONS

Wire Accommodation (AWG)	Order No.		
	15μ" Gold	30μ" Gold	150μ" Tin/Lead
28	14-56-3XX9	14-56-4XX5	14-60-1XX2
26	14-56-3XX7	14-56-4XX3	14-60-1XX0
24	• 14-56-3XX4	14-56-4XX1	14-60-0XX8
22	14-56-7XX6	14-56-8XX1	14-56-7XX1

Replace XX with no. of circuits, 02-25

Circuits	Dimension	
	A	B
2	5.05 (.199)	2.54 (.100)
3	7.59 (.299)	5.08 (.200)
4	10.13 (.399)	7.62 (.300)
5	12.67 (.499)	10.16 (.400)
6	15.21 (.599)	12.70 (.500)
7	17.75 (.699)	15.24 (.600)

Circuits	Dimension	
	A	B
8	20.29 (.799)	17.78 (.700)
9	22.83 (.899)	20.32 (.800)
10	25.37 (.999)	22.86 (.900)
11	27.91 (1.099)	25.40 (1.000)
12	30.45 (1.199)	27.94 (1.100)
13	32.99 (1.299)	30.48 (1.200)

Circuits	Dimension	
	A	B
14	35.53 (1.399)	33.02 (1.300)
15	38.07 (1.499)	35.56 (1.400)
16	40.61 (1.599)	38.10 (1.500)
17	43.15 (1.699)	40.64 (1.600)
18	45.69 (1.799)	43.18 (1.700)
19	48.23 (1.899)	45.72 (1.800)

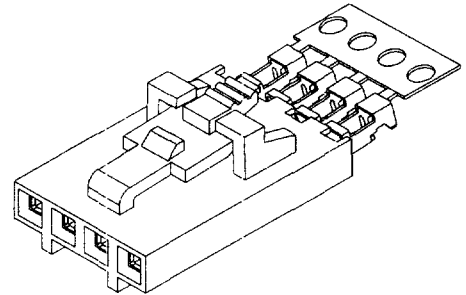
Circuits	Dimension	
	A	B
20	50.77 (1.999)	48.26 (1.900)
21	53.31 (2.099)	50.80 (2.000)
22	55.85 (2.199)	53.34 (2.100)
23	58.39 (2.299)	55.88 (2.200)
24	60.93 (2.399)	58.42 (2.300)
25	63.47 (2.499)	60.96 (2.400)

• US Standard Product, available through Molex franchised distributors
 □ Highlighted area denotes preferred standard product, usually available with shorter lead times



2.54mm (.100") Pitch C-Grid SL™ Insulation Displacement Connector Assembly

70400 Female, Single Row Version G, Positive Latch



FEATURES AND SPECIFICATIONS

Features and Benefits

- Sizes 2 to 25 circuits
- Preloaded, single piece construction allows for fully automated termination
- Packaged in plastic tubes to allow for automated manufacturing and to minimize product handling
- Positive latch secures connector to mating header or panel mount
- Front ribs prevent housing from being twisted off pins
- Anti-entanglement/overstress ribs prevent discrete wires from catching under latch during harness manufacturing and storage

Reference Information

Packaging: Tube
 UL File No.: E29179
 CSA File No.: LR19980
 Mates With: 70018, 70107-A, 70107-B, 70543, 70545, 70553 and 70555
 Use With Molex Cable: 7307, 7767, 8996, 8997, 24226, 24241, 24369 and 24389
 Designed In: Inches

Electrical

Voltage: 250V
 Current: 1.2A—28 AWG; 1.8A—26 AWG
 3.0A—24 AWG; 3.0A—22 AWG
 Contact Resistance: 15mΩ max.
 Dielectric Withstanding Voltage: 600V AC rms
 Insulation Resistance: 10,000 MΩ min.

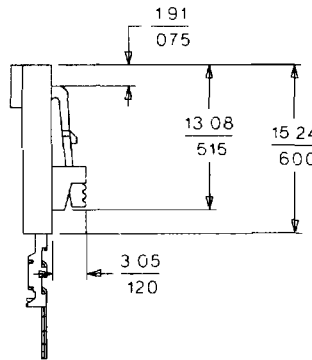
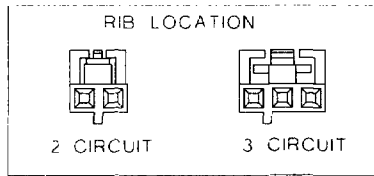
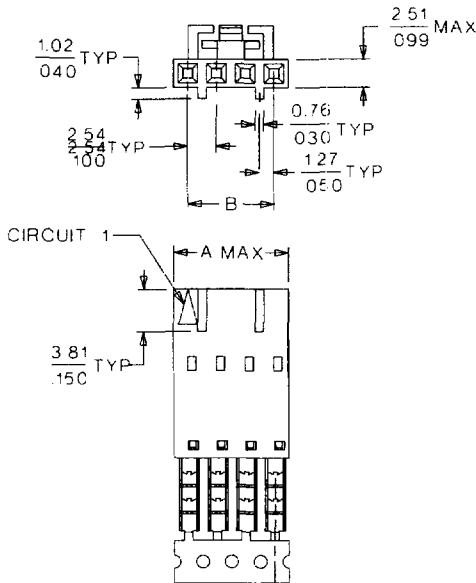
Mechanical

Terminal Pull-Out Force: 4 lb for 15 seconds
 Mating Force: 8.0 oz max.
 Unmating Force: 1.0 oz min.

Physical

Housing: Black glass-filled polyester, UL 94V-0
 Contact: Phosphor Bronze
 Plating: See Table
 Temperature: -40 to +120°C
 Insulation and Wire Gauge Range: .053" max. with 22 to 28 AWG stranded discrete wire or flat ribbon cable
 Pin Height: .320" max. to .200" min. (measured from top of housing or PCB to top of pin)

Not For Use With C-Grid III™ Components



Wire Gauge Chart	
Code Stamped on Terminals	Wire Gauge (AWG)
A	24
B	26
C	28
D	22

Note: 2 circuit assemblies supplied as grouped pairs

Plating Code (Stripe on Carrier Strip)	
Plating	Color
Tin/Lead	None
15µ" Gold	Yellow
30µ" Gold	Red

Delivered on a carrier with 20 pieces per strip.
Actual Size **Universal Polarizing Pin 40713-1**
 Order No. 15-04-0292

ORDERING INFORMATION AND DIMENSIONS

Wire Accommodation (AWG)	Order No.		
	15µ" Gold	30µ" Gold	150µ" Tin/Lead
28	14-56-2XX6	14-56-3XX3	14-60-0XX6
26	14-56-2XX4	14-56-3XX1	14-60-0XX4
24	14-56-2XX2	14-56-2XX8	14-60-0XX2
22	14-56-7XX7	14-56-8XX2	14-56-7XX2

Replace XX with no. of circuits, 02-25

Circuits	Dimension	
	A	B
2	5.05 (.199)	2.54 (.100)
3	7.59 (.299)	5.08 (.200)
4	10.13 (.399)	7.62 (.300)
5	12.67 (.499)	10.16 (.400)
6	15.21 (.599)	12.70 (.500)
7	17.75 (.699)	15.24 (.600)

Circuits	Dimension	
	A	B
8	20.29 (.799)	17.78 (.700)
9	22.83 (.899)	20.32 (.800)
10	25.37 (.999)	22.86 (.900)
11	27.91 (1.099)	25.40 (1.000)
12	30.45 (1.199)	27.94 (1.100)
13	32.99 (1.299)	30.48 (1.200)

Circuits	Dimension	
	A	B
14	35.53 (1.399)	33.02 (1.300)
15	38.07 (1.499)	35.56 (1.400)
16	40.61 (1.599)	38.10 (1.500)
17	43.15 (1.699)	40.64 (1.600)
18	45.69 (1.799)	43.18 (1.700)
19	48.23 (1.899)	45.72 (1.800)

Circuits	Dimension	
	A	B
20	50.77 (1.999)	48.26 (1.900)
21	53.31 (2.099)	50.80 (2.000)
22	55.85 (2.199)	53.34 (2.100)
23	58.39 (2.299)	55.88 (2.200)
24	60.93 (2.399)	58.42 (2.300)
25	63.47 (2.499)	60.96 (2.400)

• US Standard Product, available through Molex franchised distributors
 □ Highlighted area denotes preferred standard product, usually available with shorter lead times

FEATURES AND SPECIFICATIONS

Features and Benefits

- Sizes 2 to 25 circuits
- Preloaded, single-piece construction allows for fully automated termination
- Packaged in mylar film on reels to allow for automated manufacturing and to minimize product handling
- Stackable end-to-end
- Polarized latching ribs
- Mates with Molex KK[®] series .100" pitch friction lock headers

Reference Information

Packaging: Tube
 Tooling Information: AM 60570 or AM 60550
 UL File No.: E29179
 CSA File No.: LR19980
 Mates With: 6373 and 7478
 Use With Molex Cable: 7307, 7767, 8996, 8997, 24226, 24241, 24369 and 24389
 Designed In: Inches

Electrical

Voltage: 250V
 Current: 1.2A—28 AWG; 1.8A—26 AWG
 3.0A—24 AWG; 3.0A—22 AWG
 Contact Resistance: 15mΩ max.
 Dielectric Withstanding Voltage: 600V AC rms
 Insulation Resistance: 10,000 MΩ min.

Mechanical

Terminal Pull-Out Force: 4 lb for 15 seconds
 Mating Force: 8.0 oz max.
 Unmating Force: 1.0 oz min.

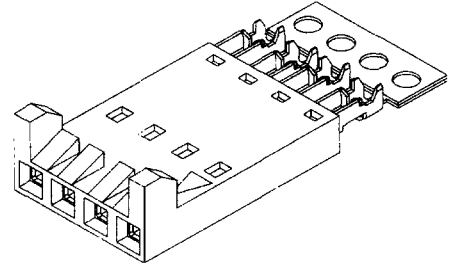
Physical

Housing: Black glass-filled polyester, UL 94V-0
 Contact: Phosphor Bronze
 Plating: See Table
 Temperature: -40 to +120°C
 Insulation and Wire Gauge Range: .053" max. with 22 to 28 AWG stranded discrete wire or flat ribbon cable
 Pin Height: .320" max. to .200" min. (measured from top of housing or PCB to top of pin)



**2.54mm (.100") Pitch
 C-Grid SL™
 Insulation Displacement
 Connector Assembly**

**70400
 Female, Single Row
 Version H**



Not For Use With C-Grid III™ Components

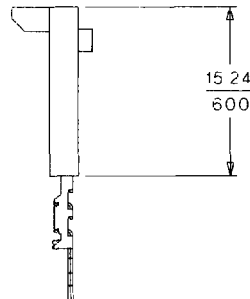
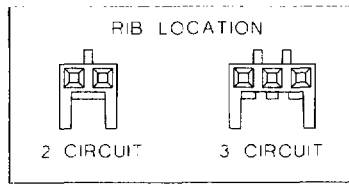
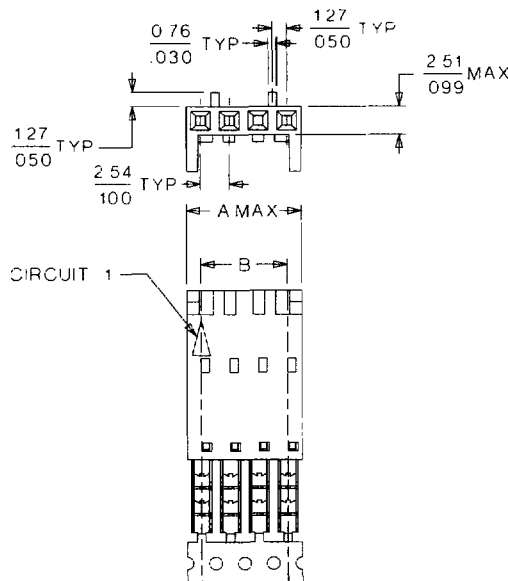
Wire Gauge Chart	
Code Stamped on Terminals	Wire Gauge (AWG)
A	24
B	26
C	28
D	22

Note: 2 to 12 circuit assemblies are grouped within the mylar pocket

Plating Code (Stripe on Carrier Strip)	
Plating	Color
Tin/Lead	None
15μ" Gold	Yellow
30μ" Gold	Red

Delivered on a carrier with 20 pieces per strip.

Actual Size **Universal Polarizing Pin
 40713-1
 Order No. 15-04-0292**



ORDERING INFORMATION AND DIMENSIONS

Wire Accommodation (AWG)	Order No.		
	15μ" Gold	30μ" Gold	150μ" Tin/Lead
28	14-60-1XX9	14-60-2XX2	14-60-1XX7
26	14-60-1XX8	14-60-2XX1	14-60-1XX6
24	14-56-6XX8	14-60-2XX0	14-60-1XX3
22	14-56-7XX8	14-56-8XX3	14-56-7XX3

Replace XX with no. of circuits, 02-25

Circuits	Dimension	
	A	B
2	5.05 (.199)	2.54 (.100)
3	7.59 (.299)	5.08 (.200)
4	10.13 (.399)	7.62 (.300)
5	12.67 (.499)	10.16 (.400)
6	15.21 (.599)	12.70 (.500)
7	17.75 (.699)	15.24 (.600)
8	20.29 (.799)	17.78 (.700)
9	22.83 (.899)	20.32 (.800)

Circuits	Dimension	
	A	B
10	25.37 (.999)	22.86 (.900)
11	27.91 (1.099)	25.40 (1.000)
12	30.45 (1.199)	27.94 (1.100)
13	32.99 (1.299)	30.48 (1.200)
14	35.53 (1.399)	33.02 (1.300)
15	38.07 (1.499)	35.56 (1.400)
16	40.61 (1.599)	38.10 (1.500)
17	43.15 (1.699)	40.64 (1.600)

Circuits	Dimension	
	A	B
18	45.69 (1.799)	43.18 (1.700)
19	48.23 (1.899)	45.72 (1.800)
20	50.77 (1.999)	48.26 (1.900)
21	53.31 (2.099)	50.80 (2.000)
22	55.85 (2.199)	53.34 (2.100)
23	58.39 (2.299)	55.88 (2.200)
24	60.93 (2.399)	58.42 (2.300)
25	63.47 (2.499)	60.96 (2.400)

• US Standard Product, available through Molex franchised distributors
 □ Highlighted area denotes preferred standard product, usually available with shorter lead times