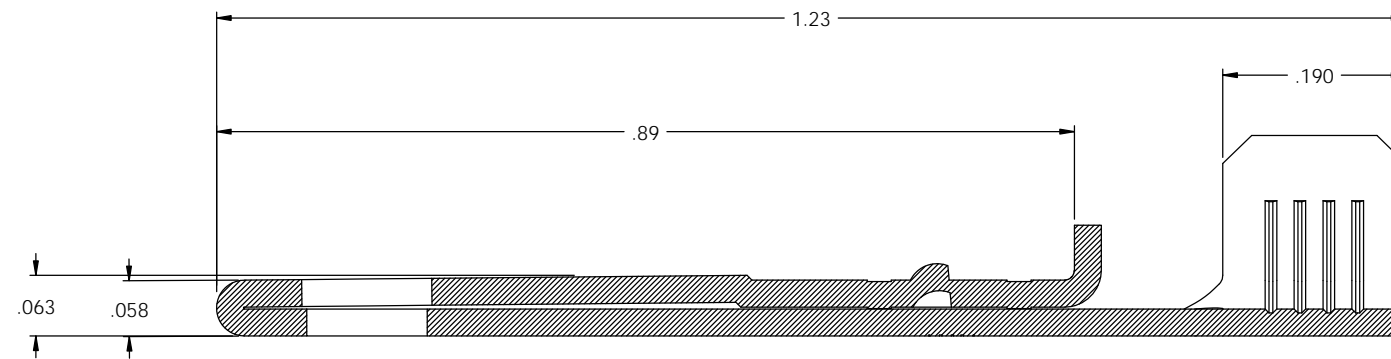
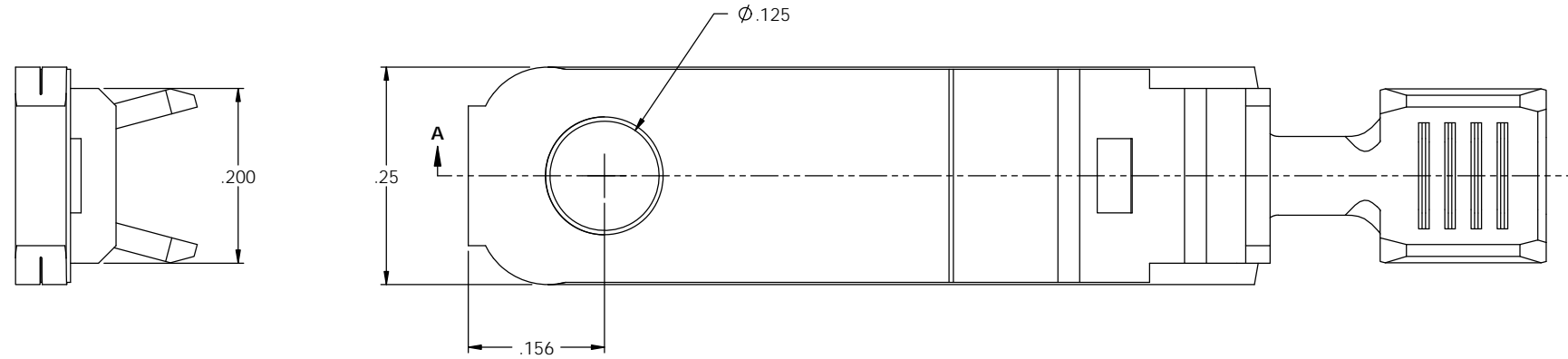
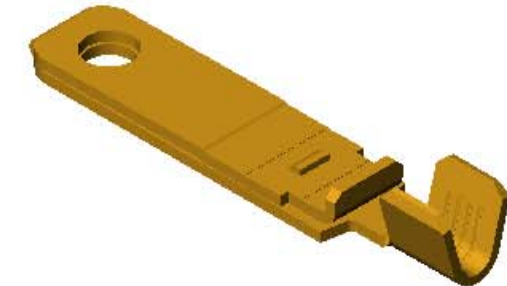


NOTES:

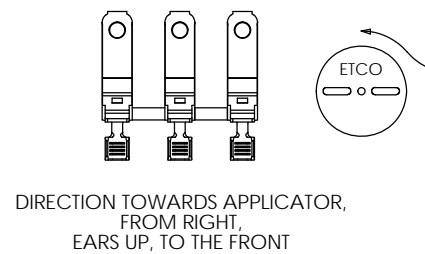
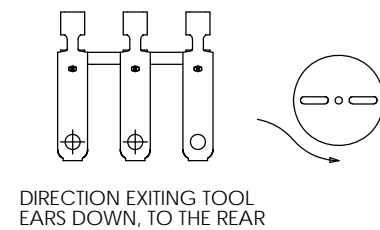
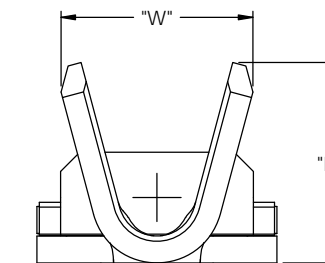
1. MATERIAL: .028 THICK C26000 BRASS; 1/2 HARD ANNEALED TO TEMPER PER ETCO METAL CODE 00746.
2. .057/.060 THICKNESS DIMENSION MUST BE MAINTAINED OVER .100 MINIMUM DIMENSION.
3. RIB DEPTH TO BE ADJUSTED TO MAINTAIN .057/.060 DIMENSION AND TO BE LOCATED APPROXIMATELY AS SHOWN.
4. PARTS MAY BE COATED WITH A LIGHT FILM OF LUBRICATION USED IN THE MANUFACTURING PROCESS.

P/C	DESCRIPTION (2)	WIRE RANGE	"H"	"W"	MAT'L
14200	PPBF21-12-A-HB	12-14 AWG	.21	.199	NOTE 1
14201	PPBF21-14-A-HB	14-16 AWG	.19	.176	NOTE 1
14202	PPBF21-16-A-HB	16-18 AWG	.17	.154	NOTE 1

Rev.	Description of Change/ SCN#	Date
1	TRANSFERED FROM CP SCJ	9-2-08
2	ECR# 816 SCJ	11-3-11



SECTION A-A  
SCALE 8 : 1



**UNCONTROLLED COPY**

<p>THIRD ANGLE PROJECTION</p>	TOOL NO.	Title: NON-POLARIZED SPACE BLADE; GBBA		
	0851	DO NOT SCALE DWG.	Drawn By: S.JOHNSON	Date: 9-2-08
<p>TOLERANCES UNLESS OTHERWISE SPECIFIED</p> <p>INCHES: XX - ±.030 XXX - ±.015</p> <p>ANGLES: ±5°</p>	<p>ETCO Incorporated Engineered Products 25 Bellows Street Warwick, RI 02888 Phone: (401) 467-2400 Fax: (401) 467-9230 www.ETCO.com</p>	Chk'd/App'd By:	Scale: 8X	Size: C
		Dwg. No.: PPBF21 cust		