


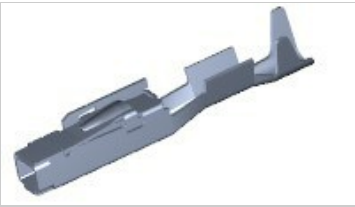
Have a Question?
 Chat with a Product Information Specialist





1452653-2 Product Details

[Share](#) [Print](#) [Email](#)



Multiple Contact Point (MCP) & MCON Contact Systems

MCON 1.2 - LL

1452653-2

TE Internal Number: 1452653-2

Active

[View 3D PDF](#)

Product Highlights [View All](#)

- MCON Product Line, Multiple Contact Point (MCP) Product Line
- Wire-to-Wire
- Applies To Wire/Cable
- Contact
- Contact Type = Socket

[Pricing & Availability](#)

[Request Sample](#)

[Add to My Part List](#)

[Buy Product through Distributor](#)

[Documents](#) [Features](#) [Compliance](#)

Product Drawings
MCON 1.2 LL (LOCKING-LANCE) (PDF, English)
CAD Files
2D Drawing (DXF, Version B, ZIP)
3D Model (IGES, Version B, ZIP)
3D Model (STEP, Version B, ZIP)
Catalog Pages/Data Sheets
2-1773457-1_MOTORMAN_FLYER (PDF, English)
Product Specifications
Application Specification
Allgemeine Crimpspezifikation / GENERAL CRIMP SPEC. (PDF, German)
MCON 1.2 Contact (PDF, German)

Related Products

Not quite the product you're looking for?

[Find Similar Products](#)

[View Part in Product Feature Selector](#)

[Check for Tooling](#)

[Feedback](#)

Corporate Information

- [About TE](#)
- [Investors](#)
- [News Room](#)
- [Supplier Portal](#)
- [Careers](#)
- [Terms & Conditions](#)
- [Privacy Policy](#)
- [Global Accessibility Statement](#)

Quick Links

- [Distributor Inventory](#)
- [Product Cross Reference](#)
- [Documents & Drawings](#)
- [Product Compliance Support Center](#)
- [Site Map](#)

Customer Support

- [Email or Chat With Us](#)
- [Find a Phone Number](#)
- [Knowledge Base](#)
- [Manage Your Account](#)

Keep Me Informed



