

FEATURES AND SPECIFICATIONS

Features and Benefits

- Polarized
- Latch window retains positive lock on 70013 after mating
- 4 wall shielding provides unmated pin protection
- 4-sided smooth surface pin for quality interface
- High temperature version 70567

Reference Information

Product Specification: PS-8723

Packaging: Tube

UL File No.: E29179 (J)

Mates With: 8723 Version A—C-Grid Receptacles, and
70450A crimp housing
8723 Version B—70013A (10 to 50 circuits)

Designed In: Inches

Electrical

Voltage: 250V

Current: 3.0A

Contact Resistance: 15mΩ max.

Dielectric Withstanding Voltage: 1500V

Insulation Resistance: 1000 MΩ min.

Mechanical

Pin Retention to Housing: 17.79N (4 lb)

Durability: 25 cycles Tin/Lead and 50 cycles Gold

Physical

Housing: Glass-filled polyester, UL 94V-0

Contact: Phosphor Bronze

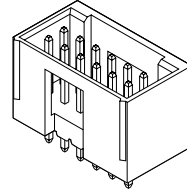
Plating: See Table

Operating Temperature: -40 to +105°C

molex® 2.54mm (.100") Pitch C-Grid® Shrouded Header

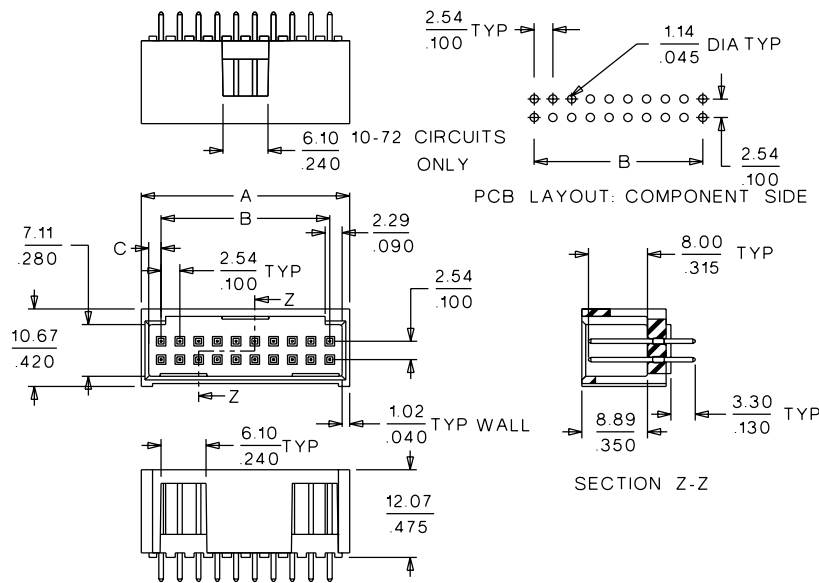
8723

Dual Row, Vertical



CATALOG DRAWING (FOR REFERENCE ONLY)

Not For Use With C-Grid III™ Components



ORDERING INFORMATION AND DIMENSIONS

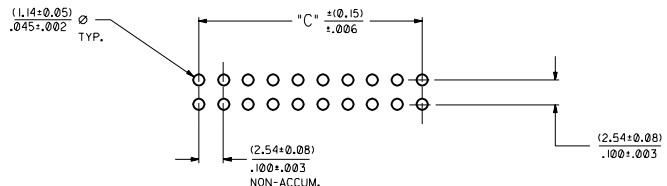
Plating Option	Order No.	
	Version A C = 1.68mm (.066")	Version B C = 3.81mm (.150")
15μm Gold	• 15-29-60XX	15-29-62XX
30μm Gold	• 15-41-70XX	15-41-72XX
150μm Tin/Lead	• 15-42-60XX	15-42-62XX

Replace XX with no. of circuits, 06-72 (even only)

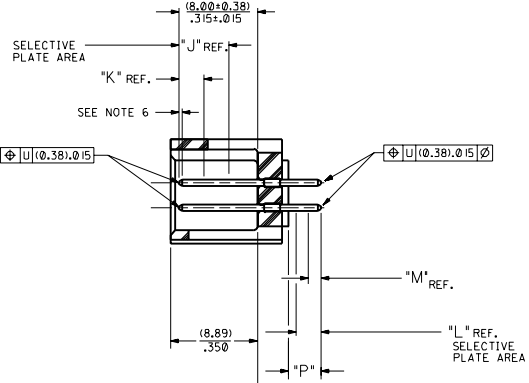
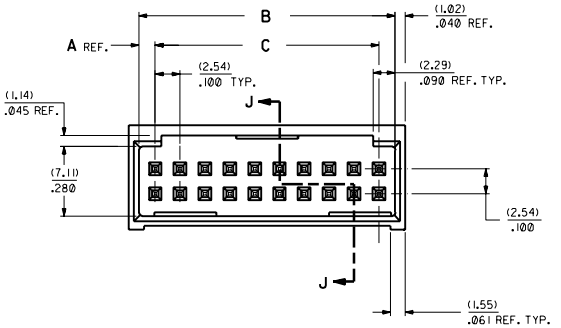
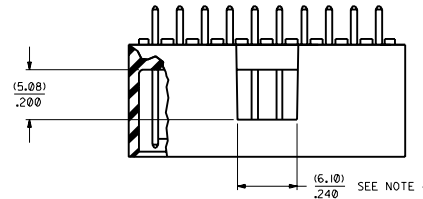
Circuits	Dimension			
	Version A		Version B	
	A	B	A	B
6	10.47 (.412)	5.08 (.200)	14.74 (.580)	5.08 (.200)
8	13.01 (.512)	7.62 (.300)	17.28 (.680)	7.62 (.300)
10	15.55 (.612)	10.16 (.400)	19.82 (.780)	10.16 (.400)
12	18.09 (.712)	12.70 (.500)	22.36 (.880)	12.70 (.500)
14	20.63 (.812)	15.24 (.600)	24.90 (.980)	15.24 (.600)
16	23.17 (.912)	17.78 (.700)	27.44 (1.080)	17.78 (.700)
18	25.71 (1.012)	20.32 (.800)	29.98 (1.180)	20.32 (.800)
20	28.25 (1.112)	22.86 (.900)	32.52 (1.280)	22.86 (.900)
22	30.79 (1.212)	25.40 (1.000)	35.06 (1.380)	25.40 (1.000)
24	33.33 (1.312)	27.94 (1.100)	37.60 (1.480)	27.94 (1.100)
26	35.87 (1.412)	30.48 (1.200)	40.14 (1.580)	30.48 (1.200)
28	38.41 (1.512)	33.02 (1.300)	42.68 (1.680)	33.02 (1.300)
30	40.95 (1.612)	35.56 (1.400)	45.22 (1.780)	35.56 (1.400)
32	43.49 (1.712)	38.10 (1.500)	47.76 (1.880)	38.10 (1.500)
34	46.03 (1.812)	40.64 (1.600)	50.30 (1.980)	40.64 (1.600)
36	48.57 (1.912)	43.18 (1.700)	52.84 (2.080)	43.18 (1.700)
38	51.11 (2.012)	45.72 (1.800)	55.38 (2.180)	45.72 (1.800)

Circuits	Dimension			
	Version A		Version B	
	A	B	A	B
40	53.65 (2.112)	48.26 (1.900)	57.92 (2.280)	48.26 (1.900)
42	56.19 (2.212)	50.80 (2.000)	60.46 (2.380)	50.80 (2.000)
44	58.73 (2.312)	53.34 (2.100)	63.00 (2.480)	53.34 (2.100)
46	61.27 (2.412)	55.88 (2.200)	65.54 (2.580)	55.88 (2.200)
48	63.81 (2.512)	58.42 (2.300)	68.08 (2.680)	58.42 (2.300)
50	66.35 (2.612)	60.96 (2.400)	70.62 (2.780)	60.96 (2.400)
52	68.89 (2.712)	63.50 (2.500)	73.16 (2.880)	63.50 (2.500)
54	71.43 (2.812)	66.04 (2.600)	75.70 (2.980)	66.04 (2.600)
56	73.97 (2.912)	68.58 (2.700)	78.24 (3.080)	68.58 (2.700)
58	76.51 (3.012)	71.12 (2.800)	80.78 (3.180)	71.12 (2.800)
60	79.05 (3.112)	73.66 (2.900)	83.32 (3.280)	73.66 (2.900)
62	81.59 (3.212)	76.20 (3.000)	85.86 (3.380)	76.20 (3.000)
64	84.13 (3.312)	78.74 (3.100)	88.40 (3.480)	78.74 (3.100)
66	86.67 (3.412)	81.28 (3.200)	90.94 (3.580)	81.28 (3.200)
68	89.21 (3.512)	83.82 (3.300)	93.48 (3.680)	83.82 (3.300)
70	91.75 (3.612)	86.36 (3.400)	96.02 (3.780)	86.36 (3.400)
72	94.29 (3.712)	88.90 (3.500)	98.56 (3.880)	88.90 (3.500)

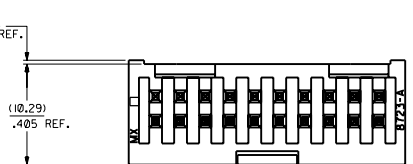
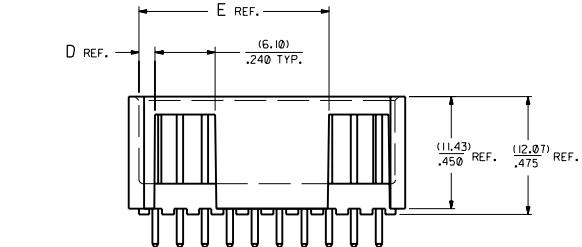
• US Standard Product, available through Molex franchised distributors



RECOMMENDED P.C. BOARD HOLE LAYOUT



SECTION J-J



NOTES:

- 1- 20 CIRCUIT SIZE SHOWN FOR ILLUSTRATION PURPOSES.
- 2- PIN PUSHOUT FORCE: (17.79 N) 4 LBS.
- 3- PINS MUST MEET SOLDERABILITY SPEC. MIL-STD-202 METHOD 208B.
- 4- WINDOW NOT AVAILABLE ON 6 AND 8 CIRCUIT SIZE.
- 5- FOR CHARTED DIMENSIONS AND ASSEMBLY NOS. NOT SHOWN ON THIS SHEET - SEE SHEET 2.
- 6- ROW TO ROW PIN HEIGHT VARIATION MUST NOT EXCEED (0.13) / .005 IN.
- 7- PRODUCT CONFORMS TO PS-8723.

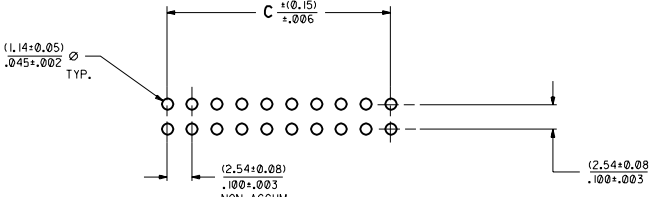
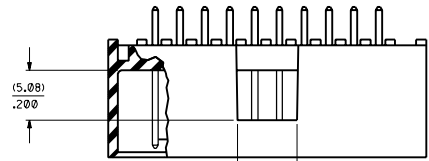
KCT.	8723				
	DIM. 'A'	DIM. 'B'	DIM. 'C'	DIM. 'D'	DIM. 'E'
06	(1.68) ±.066	(8.43) ±.332	(5.08) ±.200	(1.68) ±.066	
08	(1.68) ±.066	(10.97) ±.432	(7.62) ±.300	(1.68) ±.066	
10	(1.68) ±.066	(13.51) ±.532	(10.16) ±.400	(4.22) ±.166	
12	(1.68) ±.066	(16.05) ±.632	(12.70) ±.500	(4.22) ±.166	
14	(1.68) ±.066	(18.59) ±.732	(15.24) ±.600	(6.76) ±.266	
16	(1.68) ±.066	(21.13) ±.832	(17.78) ±.700	(6.76) ±.266	
18	(1.68) ±.066	(23.67) ±.932	(20.32) ±.800	(9.30) ±.366	
20	(1.68) ±.066	(26.21) ±.1.032	(22.86) ±.900	(1.68) ±.066	(19.46) ±.766
22	(1.68) ±.066	(28.75) ±.1.132	(25.40) ±.1.000	(1.68) ±.066	(22.00) ±.866
24	(1.68) ±.066	(31.29) ±.1.232	(27.94) ±.1.100	(1.68) ±.066	(24.54) ±.966
26	(1.68) ±.066	(33.83) ±.1.332	(30.48) ±.1.200	(1.68) ±.066	(27.08) ±.1.066
28	(1.68) ±.066	(36.37) ±.1.432	(33.02) ±.1.300	(1.68) ±.066	(29.62) ±.1.166
30	(1.68) ±.066	(38.91) ±.1.532	(35.56) ±.1.400	(1.68) ±.066	(32.16) ±.1.266
32	(1.68) ±.066	(41.45) ±.1.632	(38.10) ±.1.500	(1.68) ±.066	(34.70) ±.1.366
34	(1.68) ±.066	(43.99) ±.1.732	(40.64) ±.1.600	(1.68) ±.066	(37.24) ±.1.466
36	(1.68) ±.066	(46.53) ±.1.832	(43.18) ±.1.700	(1.68) ±.066	(39.78) ±.1.566
38	(1.68) ±.066	(49.07) ±.1.932	(45.72) ±.1.800	(1.68) ±.066	(42.32) ±.1.666
40	(1.68) ±.066	(51.61) ±.2.032	(48.26) ±.1.900	(1.68) ±.066	(44.86) ±.1.766
42	(1.68) ±.066	(54.15) ±.2.132	(50.80) ±.2.000	(1.68) ±.066	(47.40) ±.1.866
44	(1.68) ±.066	(56.69) ±.2.232	(53.34) ±.2.100	(1.68) ±.066	(49.94) ±.1.966
46	(1.68) ±.066	(59.23) ±.2.332	(55.88) ±.2.200	(1.68) ±.066	(52.48) ±.2.066
48	(1.68) ±.066	(61.77) ±.2.432	(58.42) ±.2.300	(1.68) ±.066	(55.02) ±.2.166
50	(1.68) ±.066	(64.31) ±.2.532	(60.96) ±.2.400	(1.68) ±.066	(57.56) ±.2.266
52	(1.68) ±.066	(66.85) ±.2.632	(63.50) ±.2.500	(1.68) ±.066	(60.10) ±.2.366
54	(1.68) ±.066	(69.39) ±.2.732	(66.04) ±.2.600	(1.68) ±.066	(62.64) ±.2.466
56	(1.68) ±.066	(71.93) ±.2.832	(68.58) ±.2.700	(1.68) ±.066	(65.18) ±.2.566
58	(1.68) ±.066	(74.47) ±.2.932	(71.12) ±.2.800	(1.68) ±.066	(67.72) ±.2.666
60	(1.68) ±.066	(77.01) ±.3.032	(73.66) ±.2.900	(1.68) ±.066	(70.26) ±.2.766
62	(1.68) ±.066	(79.55) ±.3.132	(76.20) ±.3.000	(1.68) ±.066	(72.80) ±.2.866
64	(1.68) ±.066	(82.09) ±.3.232	(78.74) ±.3.100	(1.68) ±.066	(75.34) ±.2.966
66	(1.68) ±.066	(84.63) ±.3.332	(81.28) ±.3.200	(1.68) ±.066	(77.88) ±.3.066
68	(1.68) ±.066	(87.17) ±.3.432	(83.82) ±.3.300	(1.68) ±.066	(80.42) ±.3.166
70	(1.68) ±.066	(89.71) ±.3.532	(86.36) ±.3.400	(1.68) ±.066	(82.96) ±.3.266
72	(1.68) ±.066	(92.25) ±.3.632	(88.90) ±.3.500	(1.68) ±.066	(85.50) ±.3.366

MATERIAL:

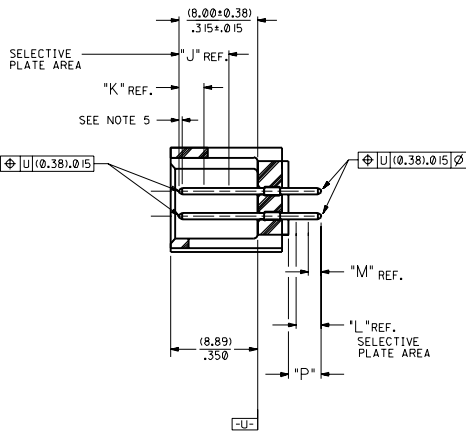
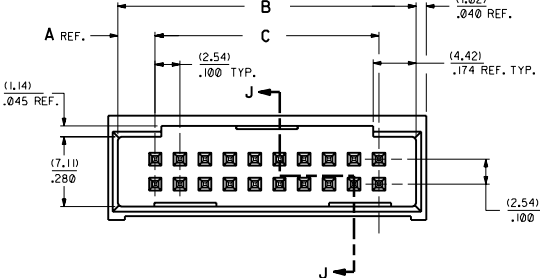
SHROUDED WAFER: 38% G.F. POLYESTER, 94V-0; COLOR: BLACK.
PINS: PHOS. BRONZE 510,
SEE SHEET 2 FOR FINISHES.

ASSEMBLY STYLE "A" AND "B"

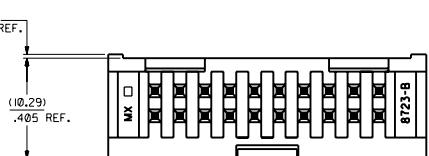
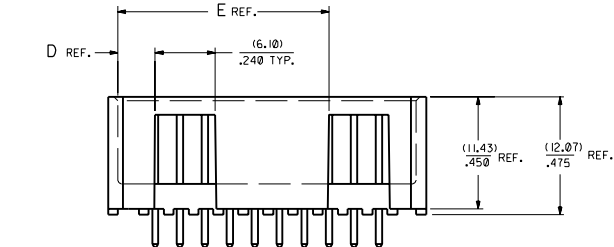
DIMENSIONS SHOWN UNLESS NOTED OTHERWISE IN MILLIMETERS OR INCHES		MFG. SH. REV. LTR. REVISIONS	
TITLE: SALES ASSEMBLY		REVISE ONLY ON CAD SYSTEM	
WAFER - STRAIGHT MT. FULLY SHROUDED		DATE: 10F 7 92/07/17	
.100 GRID FOR USE W/ .025 SQ. PINS		DRAWN BY: RB	
WITH .066 END WALLS		CHECKED BY: RB	
MATERIAL: 38% G.F. POLYESTER, 94V-0		SCALE: 4:1	
MATERIAL: PHOS. BRONZE 510		PART NO. SDA-8723-*****	
MATERIAL: WITH .066 END WALLS		SEE CHART	
MATERIAL: WITH .066 END WALLS		MATERIAL: WITH .066 END WALLS	



RECOMMENDED P.C. BOARD HOLE LAYOUT



SECTION J-J



NOTES:

- 1- 20 CIRCUIT SIZE SHOWN FOR ILLUSTRATION PURPOSES.
- 2- PIN PUSHOUT FORCE: (17.79 N)/4 LBS.
- 3- PINS MUST MEET SOLDERABILITY SPEC. MIL-STD-202 METHOD 208B.
- 4- FOR CHARTED DIMENSIONS AND ASSEMBLY NOS. NOT SHOWN ON THIS SHEET - SEE SHEET 4.
- 5- ROW TO ROW PIN HEIGHT VARIATION MUST NOT EXCEED (0.13)/.005 IN.
- 6- WINDOW NOT AVAILABLE ON 6 AND 8 CIRCUIT SIZE.
- 7- PRODUCT CONFORM TO PS-8723.

CKT.	DIM. 'A'	DIM. 'B'	DIM. 'C'	DIM. 'D'	DIM. 'E'
06	(3.81) .150	(12.70) .500	(5.08) .200	(3.81) .150	
08	(3.81) .150	(15.24) .600	(7.62) .300	(3.81) .150	
10	(3.81) .150	(17.78) .700	(10.16) .400	(6.35) .250	
12	(3.81) .150	(20.32) .800	(12.70) .500	(6.35) .250	
14	(3.81) .150	(22.86) .900	(15.24) .600	(8.89) .350	
16	(3.81) .150	(25.40) 1.000	(17.78) .700	(8.89) .350	
18	(3.81) .150	(27.94) 1.100	(20.32) .800	(11.43) .450	
20	(3.81) .150	(30.48) 1.200	(22.86) .900	(3.81) .150	(21.59) .850
22	(3.81) .150	(33.02) 1.300	(25.40) 1.000	(3.81) .150	(24.13) .950
24	(3.81) .150	(35.56) 1.400	(27.94) 1.100	(3.81) .150	(26.67) 1.050
26	(3.81) .150	(38.10) 1.500	(30.48) 1.200	(3.81) .150	(29.21) 1.150
28	(3.81) .150	(40.64) 1.600	(33.02) 1.300	(3.81) .150	(31.75) 1.250
30	(3.81) .150	(43.18) 1.700	(35.56) 1.400	(3.81) .150	(34.29) 1.350
32	(3.81) .150	(45.72) 1.800	(38.10) 1.500	(3.81) .150	(36.83) 1.450
34	(3.81) .150	(48.26) 1.900	(40.64) 1.600	(3.81) .150	(39.37) 1.550
36	(3.81) .150	(50.80) 2.000	(43.18) 1.700	(3.81) .150	(41.91) 1.650
38	(3.81) .150	(53.34) 2.100	(45.72) 1.800	(3.81) .150	(44.45) 1.750
40	(3.81) .150	(55.88) 2.200	(48.26) 1.900	(3.81) .150	(46.99) 1.850
42	(3.81) .150	(58.42) 2.300	(50.80) 2.000	(3.81) .150	(49.53) 1.950
44	(3.81) .150	(60.96) 2.400	(53.34) 2.100	(3.81) .150	(52.07) 2.050
46	(3.81) .150	(63.50) 2.500	(55.88) 2.200	(3.81) .150	(54.61) 2.150
48	(3.81) .150	(66.04) 2.600	(58.42) 2.300	(3.81) .150	(57.15) 2.250
50	(3.81) .150	(68.58) 2.700	(60.96) 2.400	(3.81) .150	(59.69) 2.350
52	(3.81) .150	(71.12) 2.800	(63.50) 2.500	(3.81) .150	(62.23) 2.450
54	(3.81) .150	(73.66) 2.900	(66.04) 2.600	(3.81) .150	(64.77) 2.550
56	(3.81) .150	(76.20) 3.000	(68.58) 2.700	(3.81) .150	(67.31) 2.650
58	(3.81) .150	(78.74) 3.100	(71.12) 2.800	(3.81) .150	(69.85) 2.750
60	(3.81) .150	(81.28) 3.200	(73.66) 2.900	(3.81) .150	(72.39) 2.850
62	(3.81) .150	(83.82) 3.300	(76.20) 3.000	(3.81) .150	(74.93) 2.950
64	(3.81) .150	(86.36) 3.400	(78.74) 3.100	(3.81) .150	(77.47) 3.050
66	(3.81) .150	(88.90) 3.500	(81.28) 3.200	(3.81) .150	(80.01) 3.150
68	(3.81) .150	(91.44) 3.600	(83.82) 3.300	(3.81) .150	(82.55) 3.250
70	(3.81) .150	(93.98) 3.700	(86.36) 3.400	(3.81) .150	(85.09) 3.350
72	(3.81) .150	(96.52) 3.800	(88.90) 3.500	(3.81) .150	(87.63) 3.450

MATERIAL:

SHROUDED WAFER: 30% G.F. POLYESTER, 94V-0; COLOR: BLACK.
 PINS: PHOS. BRONZE 510,
 SEE SHEET 4 FOR FINISHES.

ASSEMBLY STYLES "C" AND "D"

R2	SEE SHEET 1
R	SEE SHEET 1
P	SEE SHEET 1
O	SEE SHEET 1
N	SEE SHEET 1

DIMENSIONS SHOWN UNLESS OTHERWISE SPECIFIED TO DIMENSIONS UNLESS OTHERWISE SPECIFIED		MFG. SH. REV. LTR. REVISIONS	
TITLE: SALES ASSEMBLY		REVISE ONLY ON CAD SYSTEM	
WAFER-STRAIGHT MT. FULLY SHROUDED		DRAWN BY: RB	
.100 GRID-FOR USE W/.025 SQ. PINS		CHECKED BY: RB	
WITH .150 END WALLS		DATE: 92/07/17	
MOLLEX INCORPORATED		PART NO. 8723	
SEE CHART SDA-8723-*****		SCALE: 4:1	
MATERIAL: 30% G.F. POLYESTER, 94V-0; COLOR: BLACK.		MATERIAL: PHOS. BRONZE 510	

